

- 6. FOR CAN UNITS EACH HOLDING TANK SHALL HAVE A CSA APPROVAL STAMPED NEAR THE IAMPO APPROVAL.
- 5. EXPOSED PIPE ABOVE ROOF TO BE PAINTED 37163-01-000.
- 4. ALL EXTERIOR OPENINGS AROUND PIPE TO BE SEALED WITH 69637-01-000.
- 3. ALL PIPE AND FITTINGS TO BE ASSEMBLED WITH SOLVENT 4020-01-000.
- 2. SLOPE OF TRAP ARM MUST BE 6 PER 305.
- 1. SLOPE OF HORIZONTAL PIPING TO BE 6 PER 305 MIN.

- (10) PLACE GASKET BETWEEN FLOOR AND BOTTOM OF TANK.
- 9. SECURE PIPES TO CABINET USING WIRE TIE 108046-02-000 AND SCREW 067-10-12U (8).
- (8) VENT PIPE MUST PROJECT 51 MIN AND 63.5 MAX ABOVE ROOF FOR PROPER FIT AND FUNCTION.
- (7) SEE DWG 61607-01-000 FOR INSTALLATION OF GROMMET.

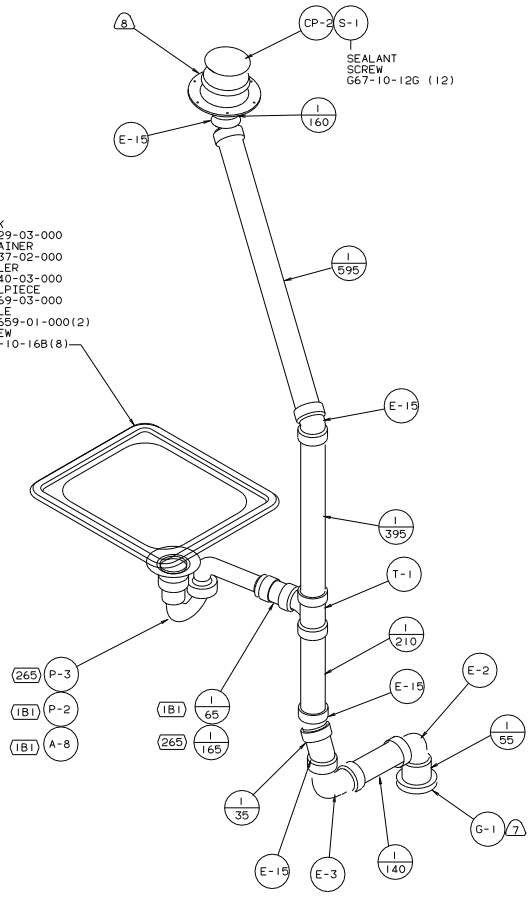
- (265) CODES/STANDARDS-CSA/CMVSS
- (1B1) CODES STANDARDS/USA
- (1A7) SHOWER PACKAGE-WITHOUT
- (140) SHOWER PACKAGE

X-X
 FOR DRAINAGE CALLOUTS SEE DWG NO. 116229-01-000

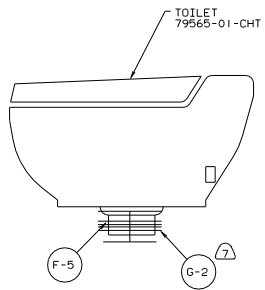
COPYRIGHT 2002 WINNERAGO INDUSTRIES, INC.		WINNERAGO		01 222HD
OPTR	DATE	UNSPECIFIED TOLERANCES ARE:	MATERIAL:	
CHDR	DATE	WHOLE DIM 1/16"	F 8	
PIPE	DATE	HOLE-PLATE (F, H)	F 8	
IN E	DATE	HOLE	F 8	
CDR	DATE	TRUSS HOLE PROJECTION	F 8	

LAYOUT: 222HD TITLE: DRAINAGE SYSTEM INSTL
 DIA 0 SCALE: NONE 30 MET SCALE DRAWING PER 1 E
 ALL DIMENSIONS ARE IN MILLIMETERS SHEET 1 OF 3 135954

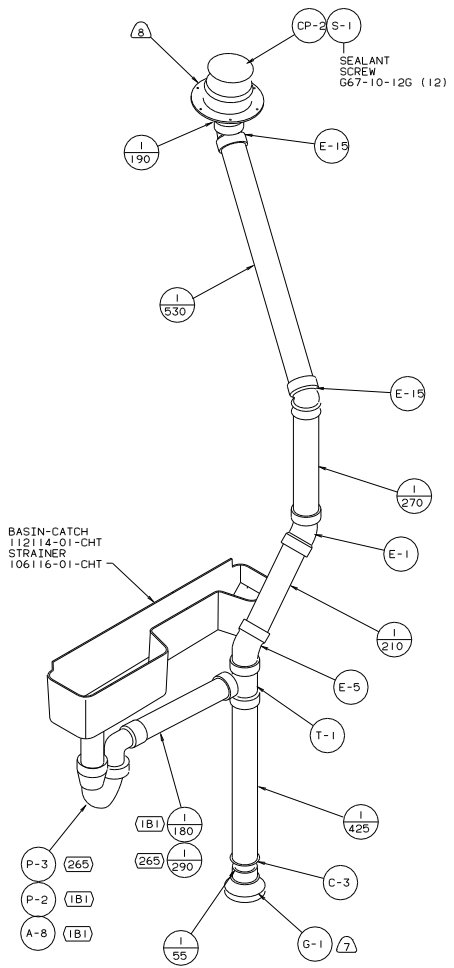
SINK
 11029-03-000
 STRAINER
 66437-02-000
 SEALER
 69640-03-000
 TAILPIECE
 11069-03-000
 ANGLE
 107659-01-000(12)
 SCREW
 667-10-16B(8)



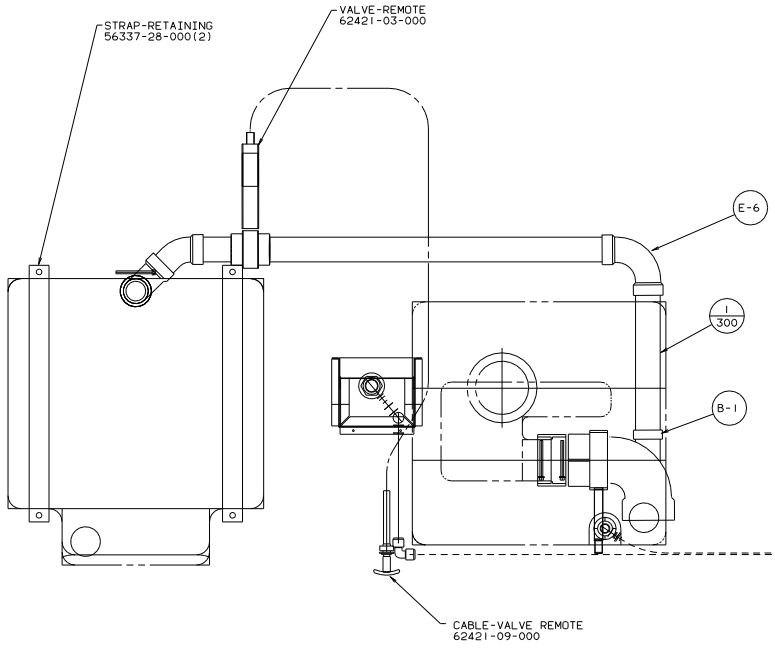
DETAIL A



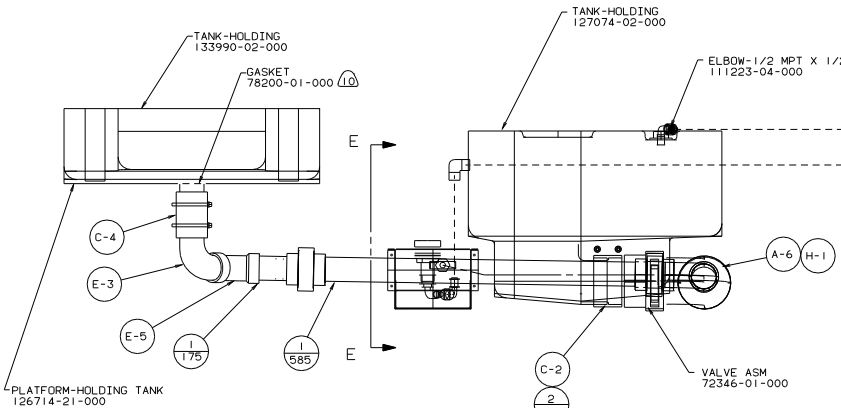
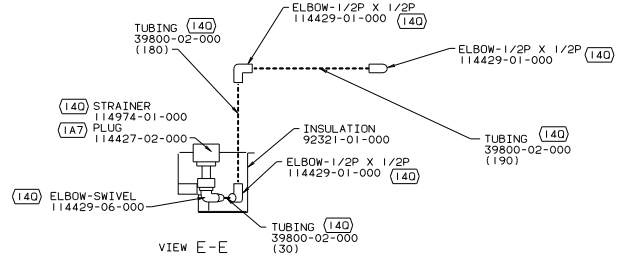
DETAIL B



DETAIL C



VIEW D-D



VIEW F-F

