



DANGER

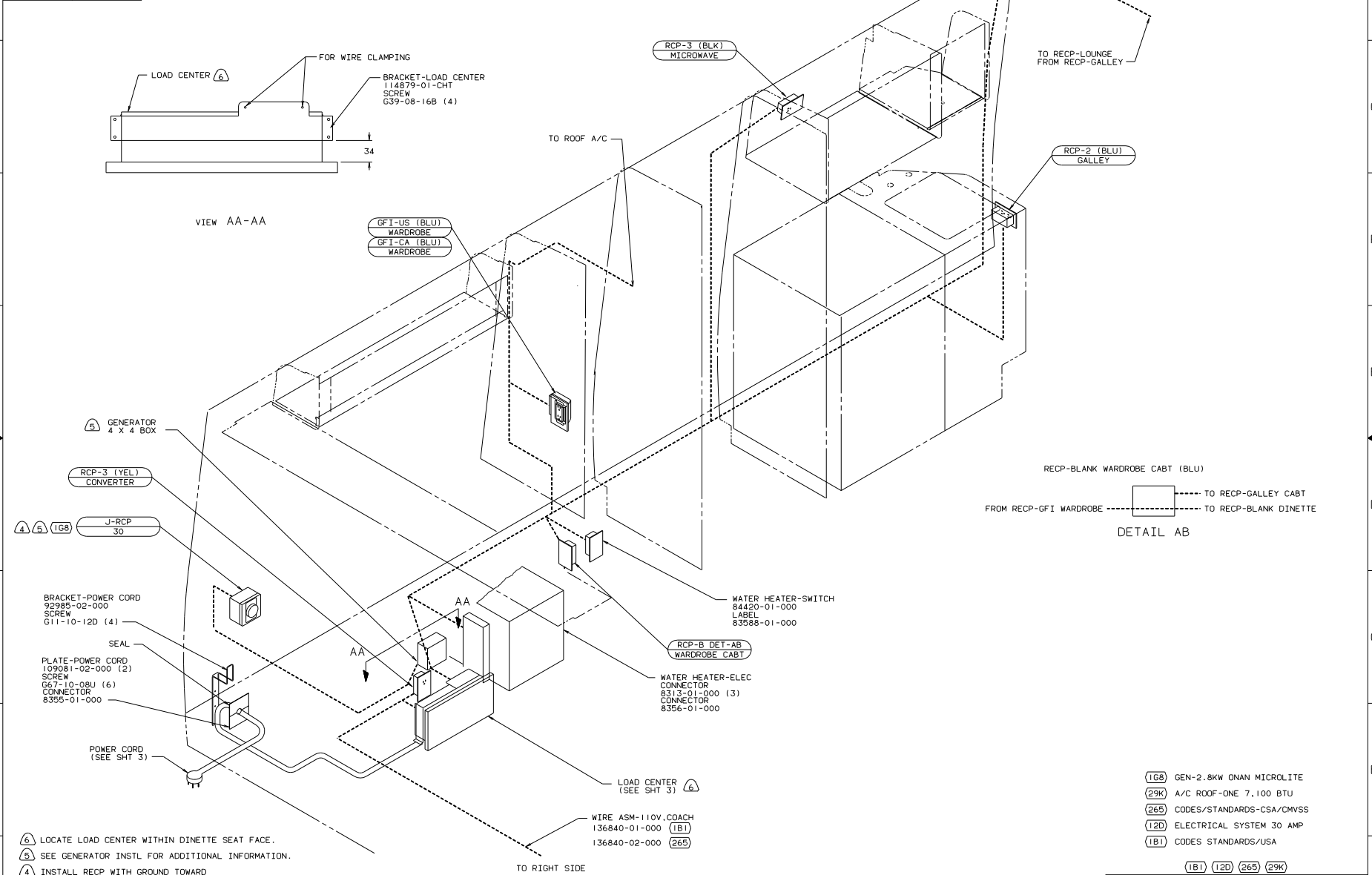
Danger of electrical shock, burns or death. Always remove all power sources before attempting any repair, service or diagnostic work. Power can be present from shore power, generator, inverter or battery. All power sources must be disabled and secured before performing any service.



CAUTION

If you lack the skills, tools or equipment to perform diagnostic or repair work leave such work to an authorized Winnebago Industries dealer or other qualified shop.

DWG NO.	FEATURE
137238-01	-----
137238-11	(181)(120)
137238-15	(265)(120)

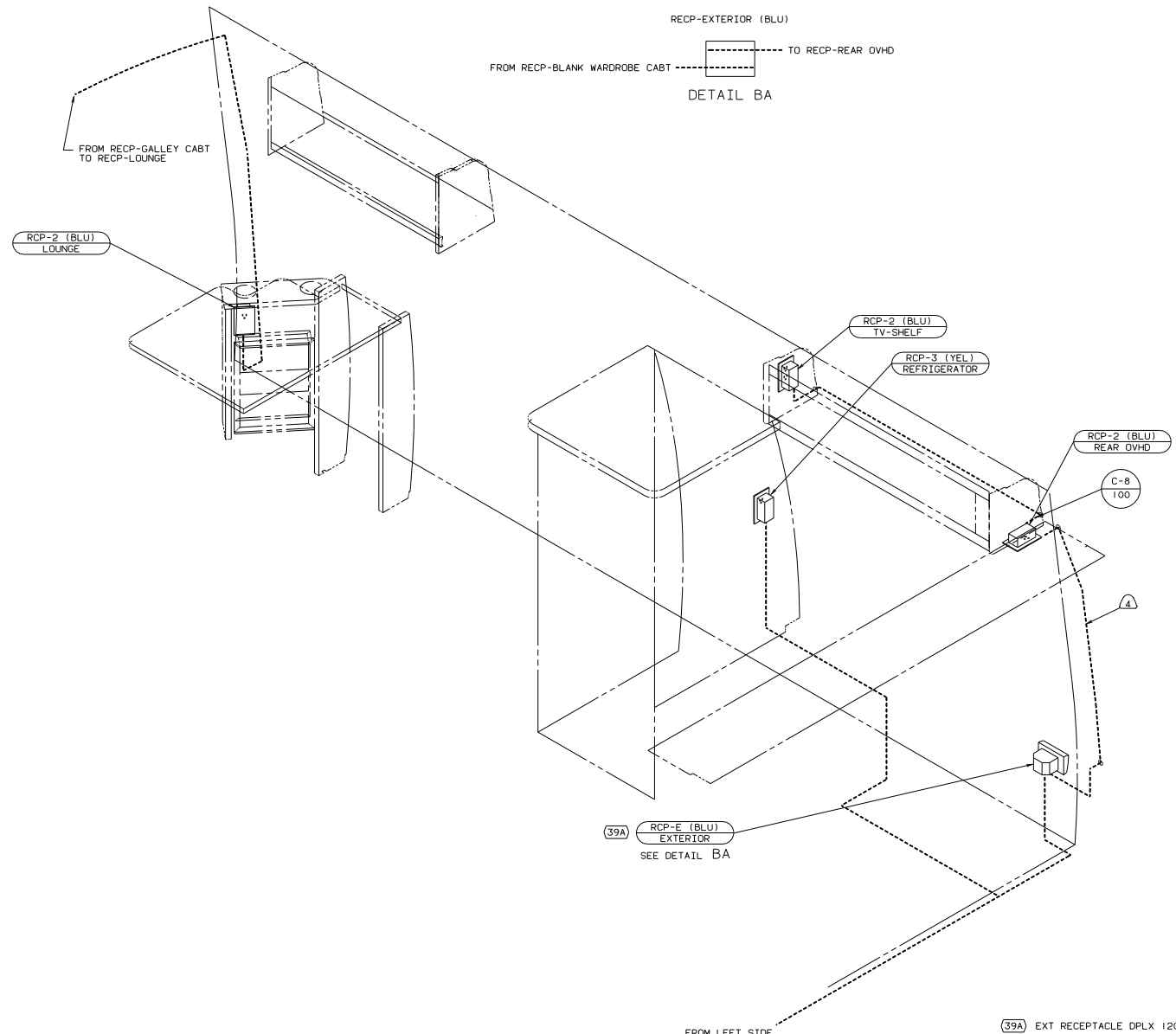


- (6) LOCATE LOAD CENTER WITHIN DINETTE SEAT FACE.
 (5) SEE GENERATOR INSTL FOR ADDITIONAL INFORMATION.
 (4) INSTALL RECP WITH GROUND TOWARD BOTTOM OF VEHICLE.
 3. ALL GROUND WIRES TO BE COVERED WITH TUBING 8041-02-000.
 2. ALL WIRES ARE TO BE CLAMPED WITH CLAMP 10497-05-000 WITHIN 200 OF OUTLET BOXES. USE SCREW G67-10-12B.
 1. ALL WIRES TO BE CLAMPED WITH CLAMP 10495-01-000 OR CLIP 80734-01-000 EVERY 600. USE SCREW G67-10-12B UNLESS OTHERWISE SPECIFIED.

- (1G8) GEN-2.8KW ONAN MICROLITE
 (29K) A/C ROOF-ONE 7,100 BTU
 (265) CODES/STANDARDS-CSA/CMVSS
 (120) ELECTRICAL SYSTEM 30 AMP
 (181) CODES STANDARDS/USA

FOR ELECTRICAL TORQUE SPECIFICATIONS SEE DWG NO. 128783-01-000
 FOR ELECTRICAL CALLOUTS SEE DWG NO. 121339-01-000

(181) (120) (265) (29K)
WINNEBAGO 02 222HD
 DATE: UNDESIGNED TOLERANCES ARE: MATERIAL:
 DWG: MADE DIM: 1:
 DATE: ONE-PLACE 12.5X1
 DATE: TWO-PLACE 12.5X1
 DATE: THREE-PLACE 12.5X1
 DATE: THREE-ANGLE INDUCTION
 LAYOUT NO: TITLE: WIRING INSTL-BODY.110V(L30)
 SHEET 1 OF 3 I.E. NO. 137238
 ALL DIMENSIONS ARE IN MILLIMETERS



- 4 ROUTE WIRE THRU SIDEWALL.
3. ALL GROUND WIRES TO BE COVERED WITH TUBING 8041-02-000.
2. ALL WIRES ARE TO BE CLAMPED WITH CLAMP 10497-05-000 WITHIN 200 OF OUTLET BOXES. USE SCREW G67-10-12B.
1. ALL WIRES TO BE CLAMPED WITH CLAMP 10495-01-000 OR CLIP 80734-01-000 EVERY 600. USE SCREW G67-10-12B UNLESS OTHERWISE SPECIFIED.

NOTES:

39A RCP-E (BLU) EXTERIOR SEE DETAIL BA

FROM LEFT SIDE

- 39A EXT RECEPTACLE DPLX 120VAC
- 265 CODES/STANDARDS-CSA/CMVSS
- 120 ELECTRICAL SYSTEM 30 AMP
- 1B1 CODES STANDARDS/USA

FOR ELECTRICAL TORQUE SPECIFICATIONS SEE DWG NO. 120783-01-000

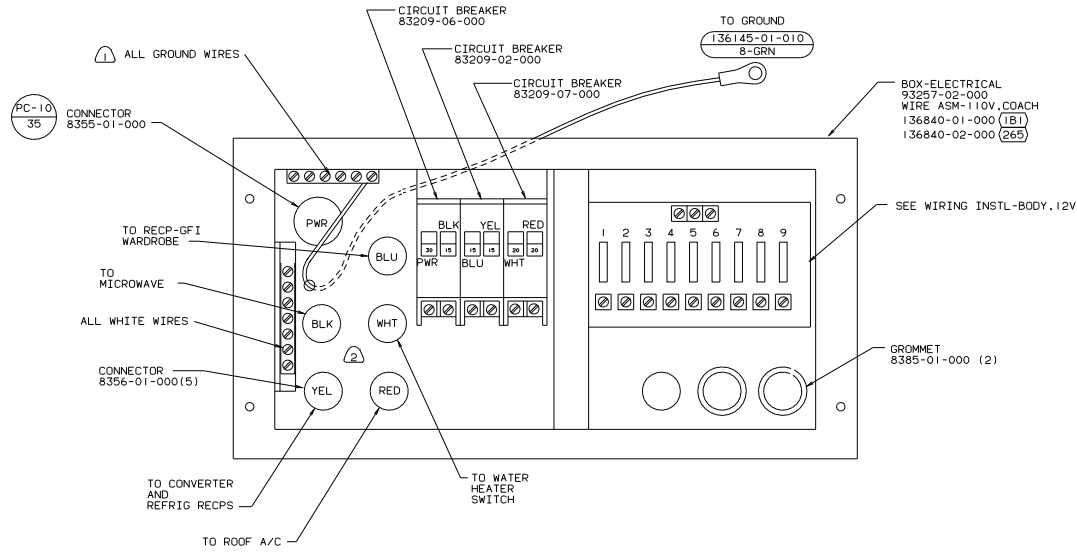
FOR ELECTRICAL CALLOUTS SEE DWG NO. 121339-01-000



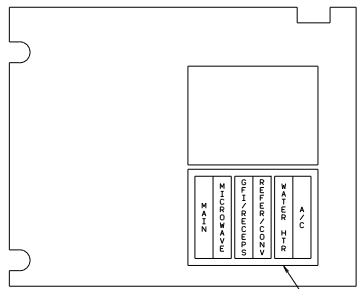
1B1 120 265 02 222HD

WIRING INSTL-BODY.110V(R30)

DO NOT SCALE DIMENSIONS SHEET 2 OF 3 I.F. NO 137238



BOX-ELECTRICAL
 93257-02-000
 WIRE ASM-110V, COACH
 136840-01-000 (1B1)
 136840-02-000 (265)



LABEL
 95721-38-000

GROMMET
 8385-01-000 (2)

SEE WIRING INSTL-BODY.12V

⚠ ALL GROUND WIRES

PC-10
 35
 CONNECTOR
 8355-01-000

TO RECIP-GFI
 WARDROBE

TO MICROWAVE

ALL WHITE WIRES

CONNECTOR
 8356-01-000(5)

TO CONVERTER
 AND
 REFRIG RECPS

TO ROOF A/C

CIRCUIT BREAKER
 83209-06-000

CIRCUIT BREAKER
 83209-02-000

CIRCUIT BREAKER
 83209-07-000

TO GROUND
 (136145-01-010
 8-GRN)

② 110V CABLES IN LOAD CENTER SHALL BE 200 LONG.

⚠ ALL GROUND WIRES TO BE COVERED WITH TUBING 8041-02-000.

NOTES:

FOR ELECTRICAL
 TORQUE
 SPECIFICATIONS
 SEE DWG NO.
 128783-01-000

X-X

FOR
 ELECTRICAL
 CALLOUTS
 SEE DWG NO.
 121339-01-000

(265) CODES/STANDARDS-CSA/CMVSS
 (12D) ELECTRICAL SYSTEM 30 AMP
 (1B1) CODES STANDARDS/USA
 (1B1) (12D) (265) 02 222HD

WIRING INSTL-BODY.110V(LC30)
 SHEET 3 OF 3