



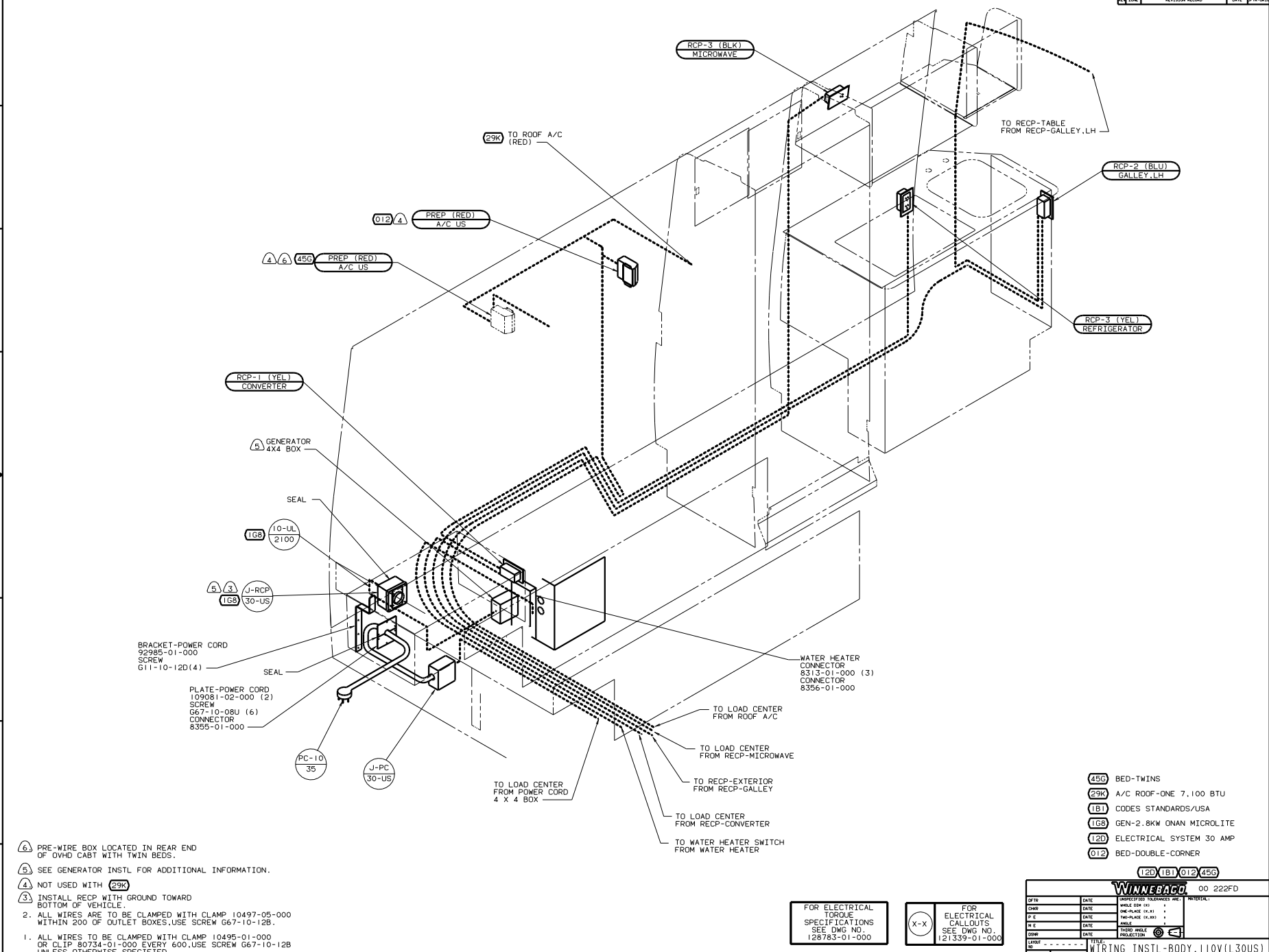
DANGER

Danger of electrical shock, burns or death. Always remove all power sources before attempting any repair, service or diagnostic work. Power can be present from shore power, generator, inverter or battery. All power sources must be disabled and secured before performing any service.



CAUTION

If you lack the skills, tools or equipment to perform diagnostic or repair work leave such work to an authorized Winnebago Industries dealer or other qualified shop.



6. PRE-WIRE BOX LOCATED IN REAR END OF OVHD CABT WITH TWIN BEDS.
 5. SEE GENERATOR INSTL FOR ADDITIONAL INFORMATION.
 4. NOT USED WITH 29K
 3. INSTALL RECP WITH GROUND TOWARD BOTTOM OF VEHICLE.
 2. ALL WIRES ARE TO BE CLAMPED WITH CLAMP 10497-05-000 WITHIN 200 OF OUTLET BOXES, USE SCREW G67-10-12B.
 1. ALL WIRES TO BE CLAMPED WITH CLAMP 10495-01-000 OR CLIP 80734-01-000 EVERY 600, USE SCREW G67-10-12B UNLESS OTHERWISE SPECIFIED.

- 450 BED-TWINS
 29K A/C ROOF-ONE 7,100 BTU
 1B1 CODES STANDARDS/USA
 1G8 GEN-2.8KW ONAN MICROLITE
 12D ELECTRICAL SYSTEM 30 AMP
 012 BED-DOUBLE-CORNER

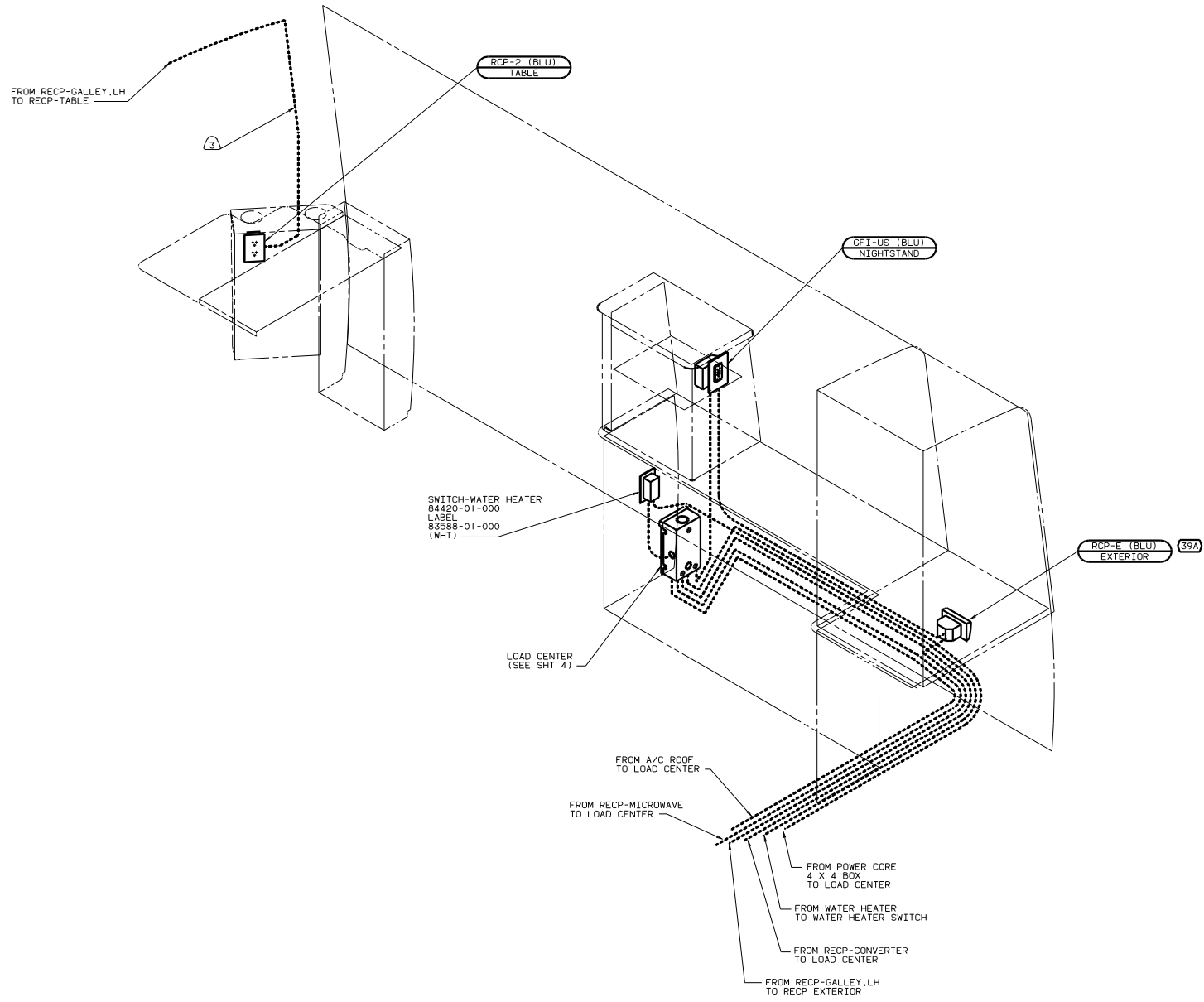
FOR ELECTRICAL TORQUE SPECIFICATIONS SEE DWG NO. 126783-01-000

(X-X) FOR ELECTRICAL CALLOUTS SEE DWG NO. 121339-01-000

WINNEBAGO 00 222FD

OF IN	DATE	UNSPECIFIED TOLERANCES ARE:	MATERIAL
OMP	DATE	WHOLE DIM (X)	
PIE	DATE	ONE-PLACE (X.X1)	
D/E	DATE	HOLE-PLACE (X.XXX)	
CODE	DATE	ANGLE	
DATE	DATE	INDIC. W/ANGLE INDICATOR	

WIRING INSTL - BODY, 110V(130US)
 REF: 130478-L 1
 133868



- 3 WIRE ROUTED BEHIND TRANSITION PANEL.
2. ALL WIRES ARE TO BE CLAMPED WITH CLAMP 10497-05-000 WITHIN 200 OF OUTLET BOXES. USE SCREW G67-10-12B.
1. ALL WIRES TO BE CLAMPED WITH CLAMP 10495-01-000 OR CLIP 80734-01-000 EVERY 600. USE SCREW G67-10-12B UNLESS OTHERWISE SPECIFIED.

NOTES:

- 39A EXT RECEPTACLE DPLX 120VAC
- 1B1 CODES STANDARDS/USA
- 12D ELECTRICAL SYSTEM 30 AMP
- 012 BED-DOUBLE-CORNER

FOR ELECTRICAL TORQUE SPECIFICATIONS SEE DWG NO. 128783-01-000

FOR ELECTRICAL CALLOUTS SEE DWG NO. 121339-01-000

00 222FD 1B1 12D 012

WIRING INSTL - BODY 110V(R30US)	
DATE	REV
NO. OF SHEETS	FIG. NO.
SHEET 2 OF 3	1E
133868	

FROM RECP-GALLEY TO RECP-TABLE

RCP-2 (BLU) TABLE

3

SWITCH-WATER HEATER
84420-01-000
LABEL
83588-01-000
(WHT)

LOAD CENTER
(SEE SHT 4)

RCP-E (BLU) EXTERIOR 39A

FROM RECP-MICROWAVE TO LOAD CENTER

FROM A/C ROOF TO LOAD CENTER

GFT-US (BLU) NIGHTSTAND

FROM POWER CORD 4 X 4 BOX TO LOAD CENTER

FROM WATER HEATER TO WATER HEATER SWITCH

FROM RECP-CONVERTER TO LOAD CENTER

FROM RECP-GALLEY LH TO RECP-EXTERIOR

3 WIRE ROUTED BEHIND TRANSITION PANEL.

2. ALL WIRES ARE TO BE CLAMPED WITH CLAMP 10497-05-000 WITHIN 200 OF OUTLET BOXES. USE SCREW G67-10-12B.

1. ALL WIRES TO BE CLAMPED WITH CLAMP 10495-01-000 OR CLIP 80734-01-000 EVERY 600. USE SCREW G67-10-12B UNLESS OTHERWISE SPECIFIED.

NOTES:

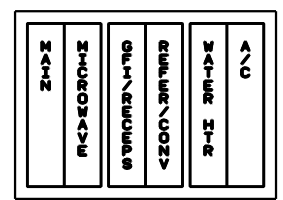
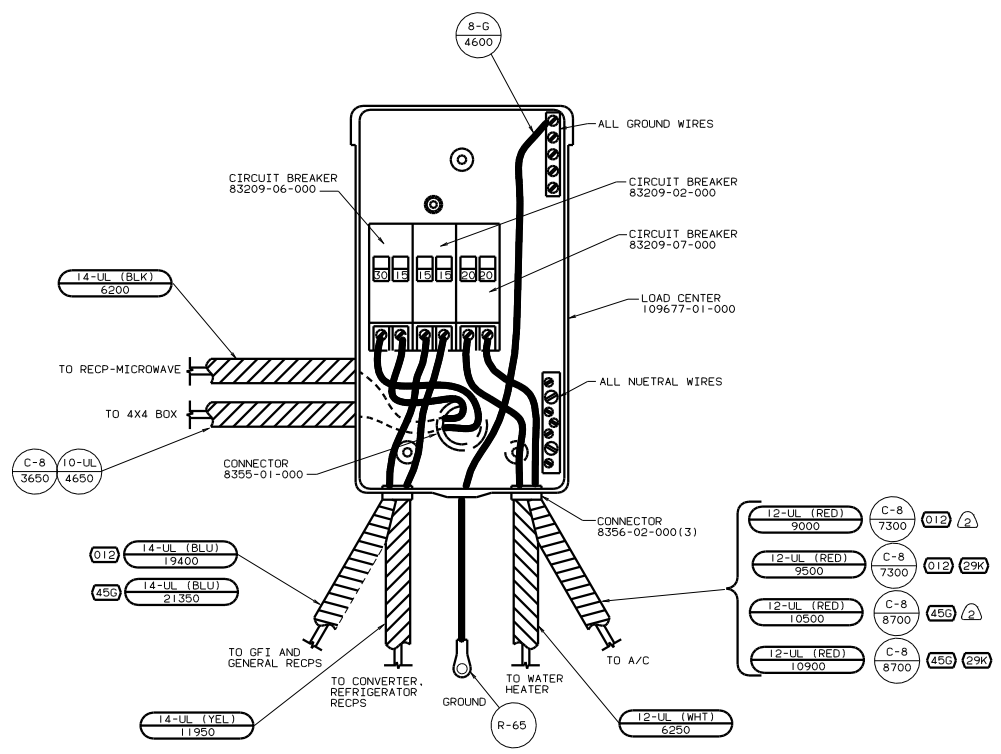
FOR ELECTRICAL TORQUE SPECIFICATIONS SEE DWG NO. 128783-01-000

FOR ELECTRICAL CALLOUTS SEE DWG NO. 121339-01-000

- 45G BED-TWINS
- 39A EXT RECEPTACLE DPLX 120VAC
- 1B1 CODES STANDARDS/USA
- 12D ELECTRICAL SYSTEM 30 AMP

00 222FD 1B1 12D 45G

WIRING INSTL - BODY 110V(R30US)
SHEET 3 OF 9



LABEL 95721-38-000
 INSTALL LABEL ON BACK SIDE OF CABINET ACCESS DOOR.

- 12-UL (RED) 9000 C-8 7300 012 2
- 12-UL (RED) 9500 C-8 7300 012 29K
- 12-UL (RED) 10500 C-8 8700 45G 2
- 12-UL (RED) 10900 C-8 8700 45G 29K

WITHOUT 29K

1. ALL CABLES SHALL BE COVERED WITH CONDUIT-CONVOLUTE, SLIT 41953-01-000, UNLESS OTHERWISE SPECIFIED, 600 LESS THAN CABLE LENGTH.

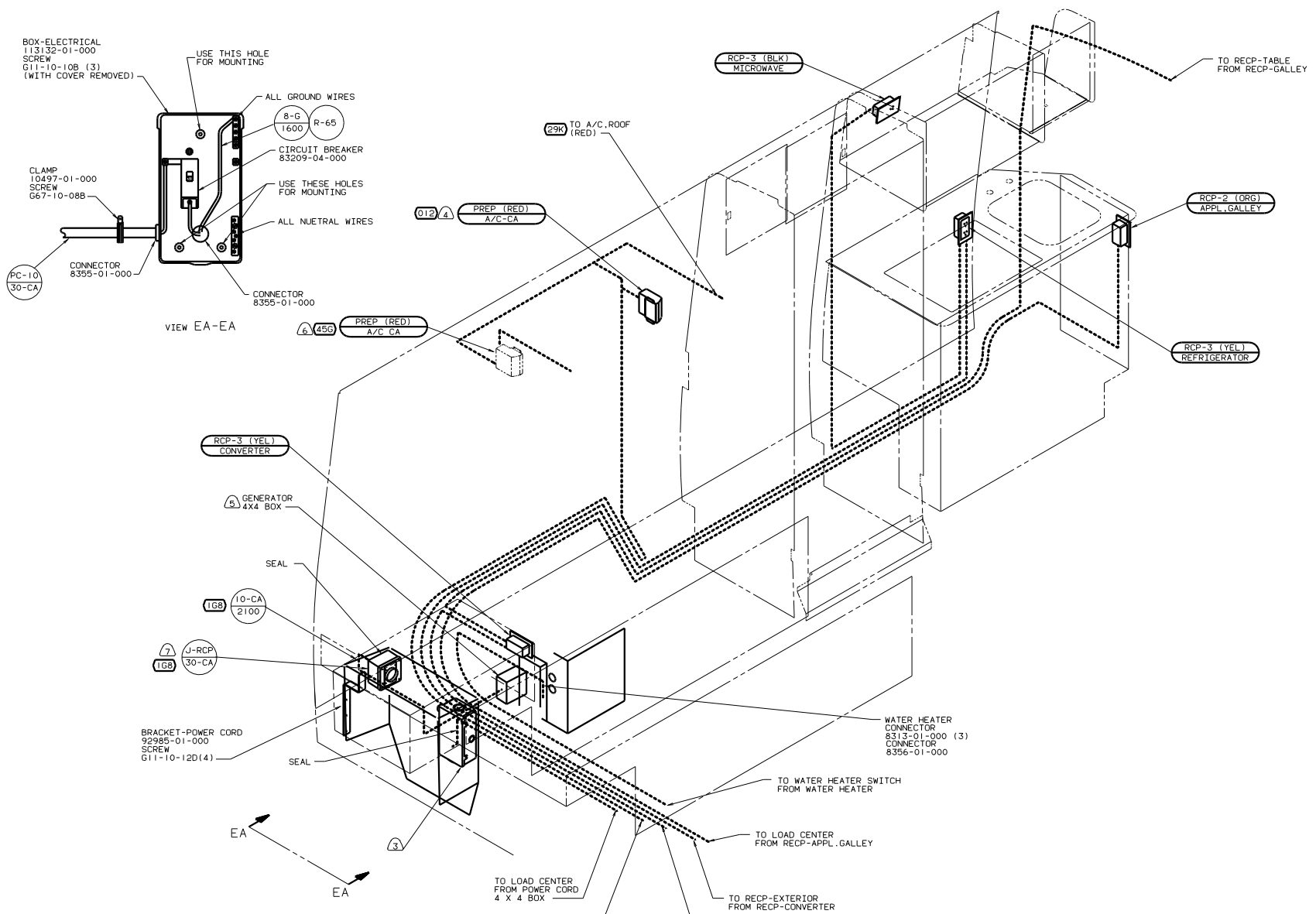
- 45G BED-TWINS
- 29K A/C ROOF-ONE 7,100 BTU
- 181 CODES STANDARDS/USA
- 120 ELECTRICAL SYSTEM 30 AMP
- 012 BED-DOUBLE-CORNER

FOR ELECTRICAL TORQUE SPECIFICATIONS SEE DWS NO. 128783-01-000

FOR ELECTRICAL CALLOUTS SEE DWS NO. 121339-01-000

120 181 012 45G 00 222FD

TITLE		WIRING INSTL - BODY (LC30US)	
NO. OF SHEETS	NO. OF SHEETS	NO. OF SHEETS	NO. OF SHEETS
4	3	1	1
SHEET 4 OF 9		Dwg NO. 133868	



- 7) INSTALL RECP WITH GROUND TOWARD BOTTOM OF VEHICLE.
 - 6) PRE-WIRE BOX IS LOCATED IN REAR END OF OVHD CABT WITH TWIN BEDS.
 - 5) SEE GENERATOR INSTL FOR ADDITIONAL INFORMATION.
 - 4) NOT USED WITH 29K
 - 8) LOCATE BOX SO REAR KNOCKOUT ALIGNS WITH HOLE IN COMPT WALL.
2. ALL WIRES ARE TO BE CLAMPED WITH CLAMP 10497-05-000 WITHIN 200' OF OUTLET BOXES. USE SCREW G67-10-12B.
1. ALL WIRES TO BE CLAMPED WITH CLAMP 10495-01-000 OR CLIP 80734-01-000 EVERY 600. USE SCREW G67-10-12B UNLESS OTHERWISE SPECIFIED.

- 120) ELECTRICAL SYSTEM 30 AMP
- 45G) BED-TWINS
- 29K) A/C ROOF-ONE 7,100 BTU
- 265) CODES/STANDARDS-CSA/CMVSS
- 168) GEN-2.8KW ONAN MICROLITE
- 012) BED-DOUBLE-CORNER

FOR ELECTRICAL TORQUE SPECIFICATIONS SEE DWG NO. 128783-01-000

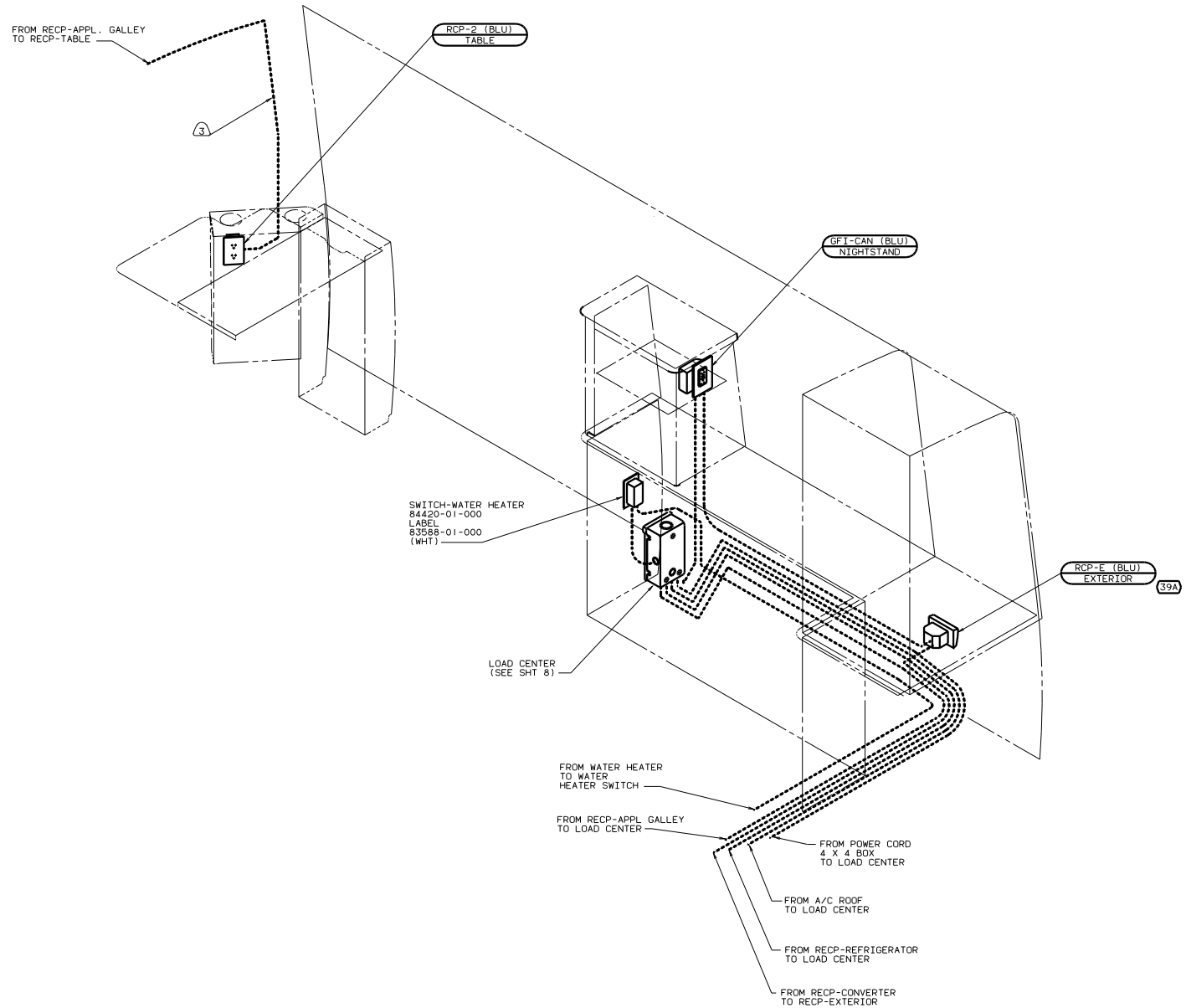
FOR ELECTRICAL CALLOUTS SEE DWG NO. 121339-01-000

120 265 012 45G 00 222FD

WIRING INSTL - BODY 110V (130CA)

SHEET 5 OF 9

133868



- 3 WIRE ROUTED IN SIDEWALL.
2. ALL WIRES ARE TO BE CLAMPED WITH CLAMP 10497-05-000 WITHIN 200 OF OUTLET BOXES. USE SCREW G67-10-12B.
1. ALL WIRES TO BE CLAMPED WITH CLAMP 10495-01-000 OR CLIP 80734-01-000 EVERY 600. USE SCREW G67-10-12B UNLESS OTHERWISE SPECIFIED.

NOTES:

FOR ELECTRICAL TORQUE SPECIFICATIONS SEE DWG NO. 128783-01-000

FOR ELECTRICAL CALLOUTS SEE DWG NO. 121339-01-000

- 39A EXT RECEPTACLE DPLX 120VAC
- 265 CODES/STANDARDS-CSA/CMVSS
- 120 ELECTRICAL SYSTEM 30 AMP
- 012 BED-DOUBLE-CORNER

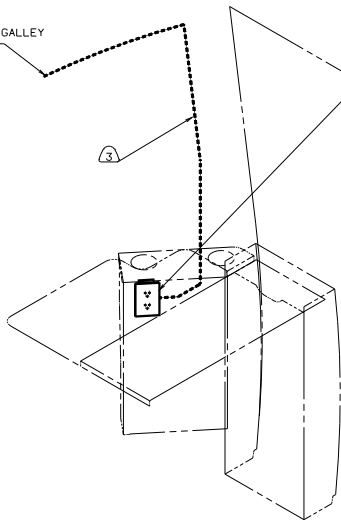
00 222FD 265 120 012

WIRING INSTL-BODY.110V(R30CA)
 SHEET 6 OF 9

FROM RECP-APPL GALLEY
TO RECP-TABLE

RCP-2 (BLU)
TABLE

3



SWITCH-WATER HEATER
84420-01-000
LABEL
83588-01-000
(WHIT)

LOAD CENTER
(SEE SHT 8)

FROM WATER HEATER
TO WATER
HEATER SWITCH

FROM POWER CORD
4 X 4 BOX
TO LOAD CENTER

FROM A/C ROOF
TO LOAD CENTER

FROM RECP-REFRIGERATOR
TO LOAD CENTER

FROM RECP-CONVERTER
TO RECP-EXTERIOR

FROM RECP-APPL GALLEY
TO LOAD CENTER

RCP-E (BLU)
EXTERIOR 39A

GFI-CAN (BLU)
NIGHTSTAND

3 WIRE ROUTED IN SIDEWALL.

2. ALL WIRES ARE TO BE CLAMPED WITH CLAMP 10497-05-000
WITHIN 200 OF OUTLET BOXES. USE SCREW G67-10-12B.

1. ALL WIRES TO BE CLAMPED WITH CLAMP 10495-01-000 OR
CLIP 80734-01-000 EVERY 600. USE SCREW G67-10-12B
UNLESS OTHERWISE SPECIFIED.

NOTES:

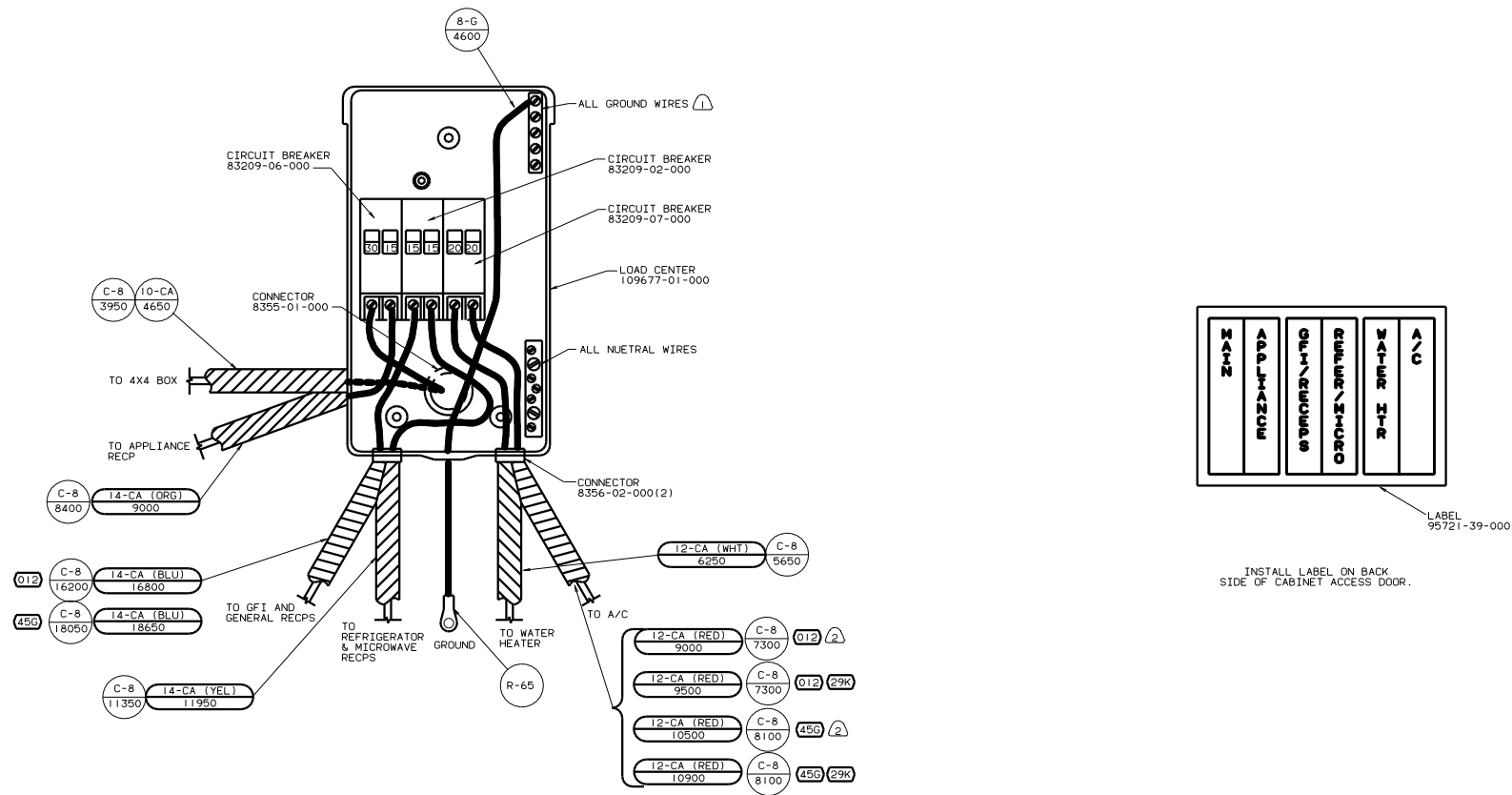
FOR ELECTRICAL
TORQUE
SPECIFICATIONS
SEE DWG NO.
128763-01-000

FOR
ELECTRICAL
CALLOUTS
SEE DWG NO.
121339-01-000

- 45G BED-TWINS
- 39A EXT RECEPTACLE DPLX 120VAC
- 265 CODES/STANDARDS-CSA/CMVSS
- 12D ELECTRICAL SYSTEM 30 AMP

00 222FD 265 12D 45G

WIRING INSTL - BODY 110V(R30CA)
SHEET 7 OF 9



2. WITHOUT (29K)

1. ALL CABLES SHALL BE COVERED WITH CONDUIT-CONVOLUTE. SLIT 41953-01-000, UNLESS OTHERWISE SPECIFIED. 600 LESS THAN CABLE LENGTH.

- (45G) BED-TWINS
- (29K) A/C ROOF-ONE 7,100 BTU
- (265) CODES/STANDARDS-CSA/CMVSS
- (120) ELECTRICAL SYSTEM 30 AMP
- (012) BED-DOUBLE-CORNER

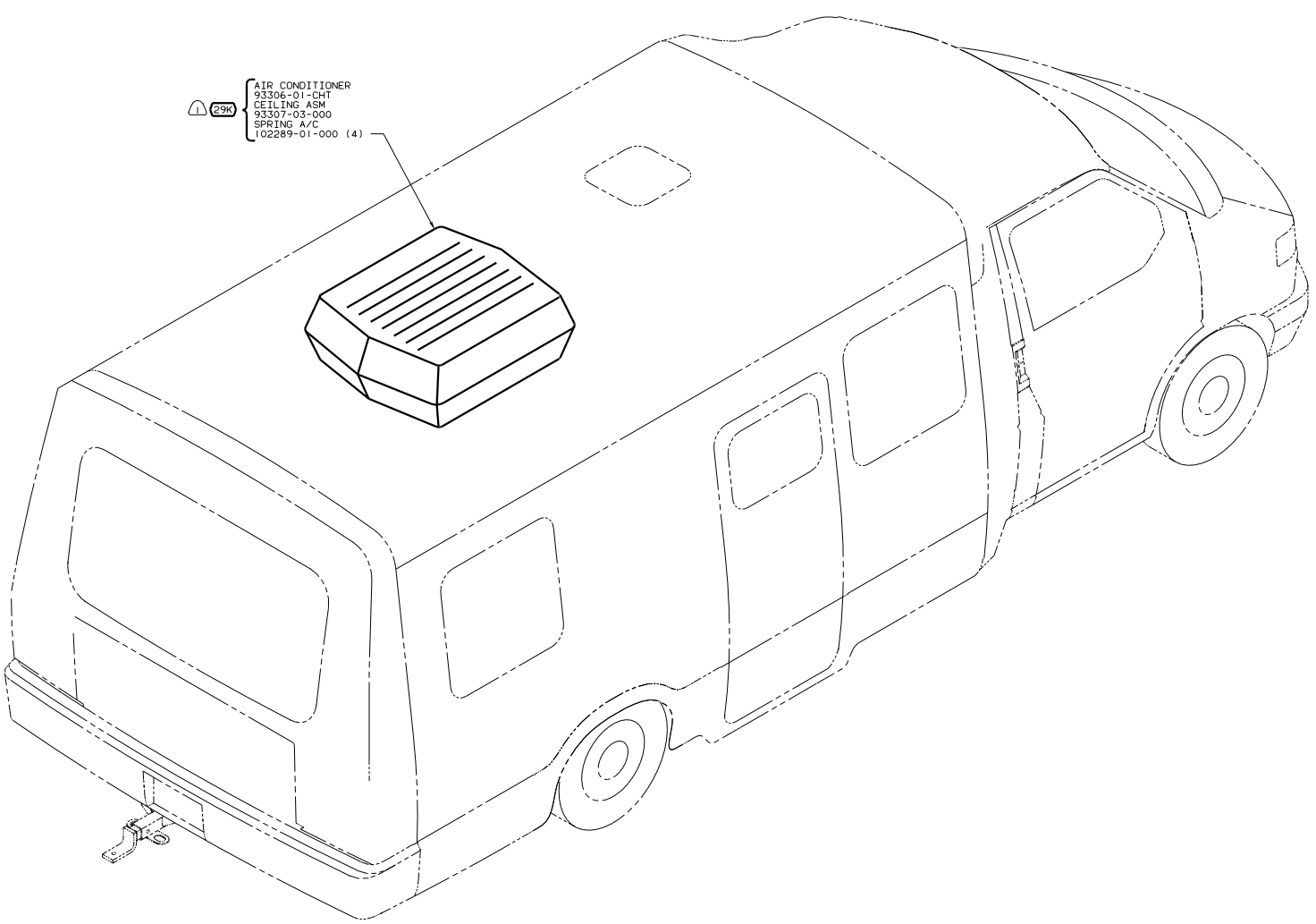
FOR ELECTRICAL TORQUE SPECIFICATIONS SEE DWG NO. 128763-01-000

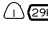
FOR ELECTRICAL CALLOUTS SEE DWG NO. 121339-01-000


120 265 012 45G 00 222FD

WIRING INSTL-BODY(LC30CA)

133868





29K
 AIR CONDITIONER
 93306-01-CHT
 CEILING ASM
 93307-03-000
 SPRING A/C
 102289-01-000 (4)

 SEE WIRING INSTL-BODY.12V FOR ADDITIONAL INFORMATION.

NOTES:

FOR ELECTRICAL
 TORQUE
 SPECIFICATIONS
 SEE DWG NO.
 128783-01-000


 FOR
 ELECTRICAL
 CALLOUTS
 SEE DWG NO.
 121339-01-000

29K A/C ROOF-ONE 7,100 BTU
265 CODES/STANDARDS-CSA/CMVSS
1B1 CODES STANDARDS/USA
 00 222FD **1B1** **265**

TITLE: WIRING INSTL-BODY	
NO. OF SCALE SHEETS	TOTAL SHEETS
3 OF 3	16
DWG NO. 133868	