



**DANGER**

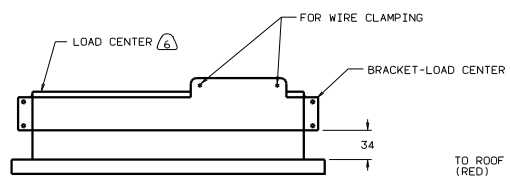
**Danger of electrical shock, burns or death.** Always remove all power sources before attempting any repair, service or diagnostic work. Power can be present from shore power, generator, inverter or battery. All power sources must be disabled and secured before performing any service.



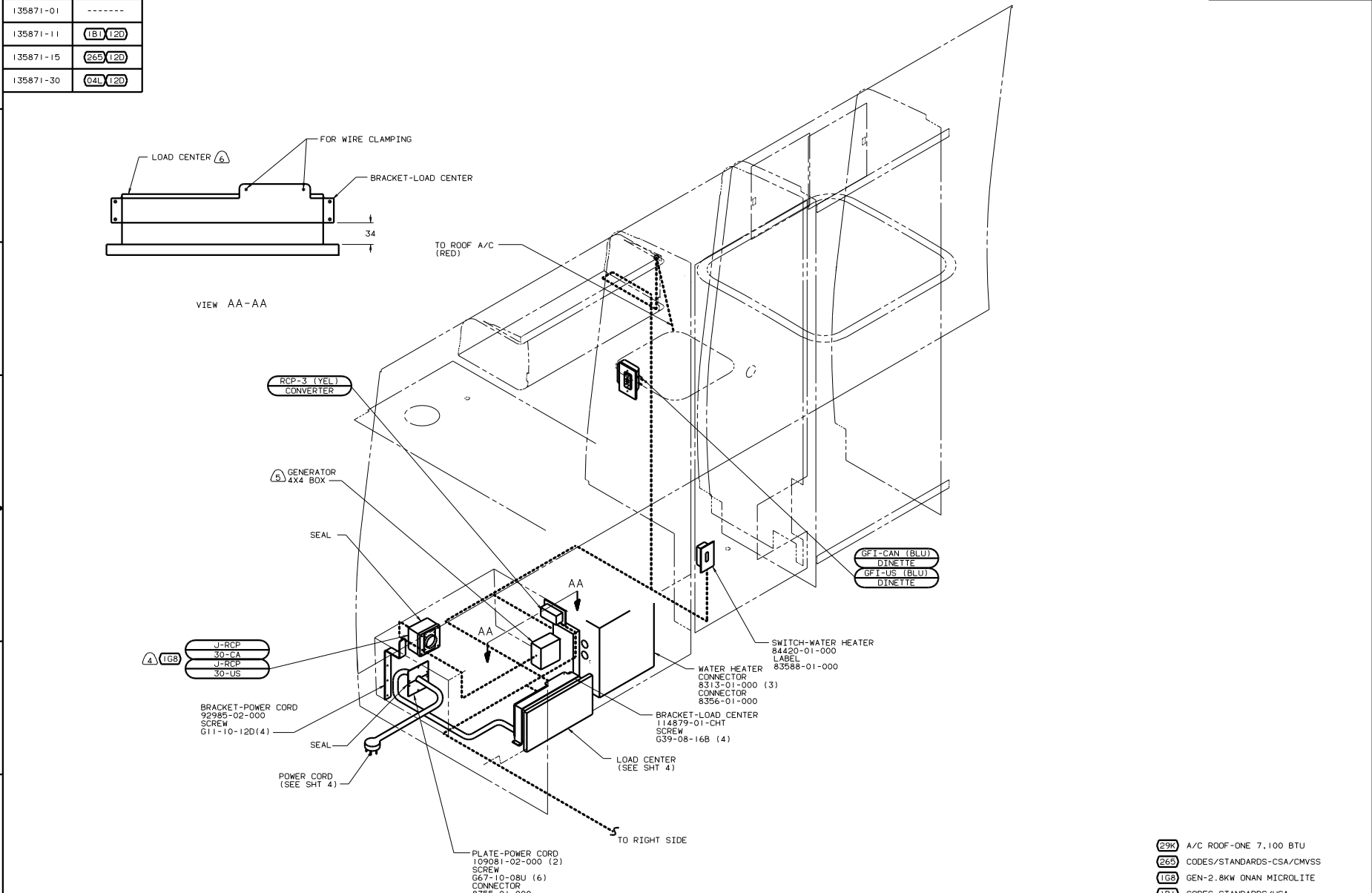
**CAUTION**

If you lack the skills, tools or equipment to perform diagnostic or repair work leave such work to an authorized Winnebago Industries dealer or other qualified shop.

DWG NO.	FEATURE
135871-01	-----
135871-11	(1B) (12D)
135871-15	(265) (12D)
135871-30	(04L) (12D)



VIEW AA-AA



- (6) LOCATE LOAD CENTER WITHIN DINETTE SEAT FACE.
  - (5) SEE GENERATOR INSTL FOR ADDITIONAL INFORMATION.
  - (4) INSTALL RCP WITH GROUND TOWARD BOTTOM OF VEHICLE.
3. ALL GROUND WIRES TO BE COVERED WITH TUBING 8041-02-000.
2. ALL WIRES ARE TO BE CLAMPED WITH CLAMP 10497-05-000 WITHIN 200 OF OUTLET BOXES. USE SCREW G67-10-12B.
1. ALL WIRES TO BE CLAMPED WITH CLAMP 10495-01-000 OR CLIP 80734-01-000 EVERY 600. USE SCREW G67-10-12B UNLESS OTHERWISE SPECIFIED.

NOTES:

- (29K) A/C ROOF-ONE 7,100 BTU
- (265) CODES/STANDARDS-CSA/CMVSS
- (1G8) GEN-2.8KW ONAN MICROLITE
- (1B1) CODES STANDARDS/USA
- (12D) ELECTRICAL SYSTEM 30 AMP

(1B1) (12D) (265) (29K)

FOR ELECTRICAL TORQUE SPECIFICATIONS SEE DWG NO. 128783-01-000

(X-X) FOR ELECTRICAL CALLOUTS SEE DWG NO. 121339-01-000

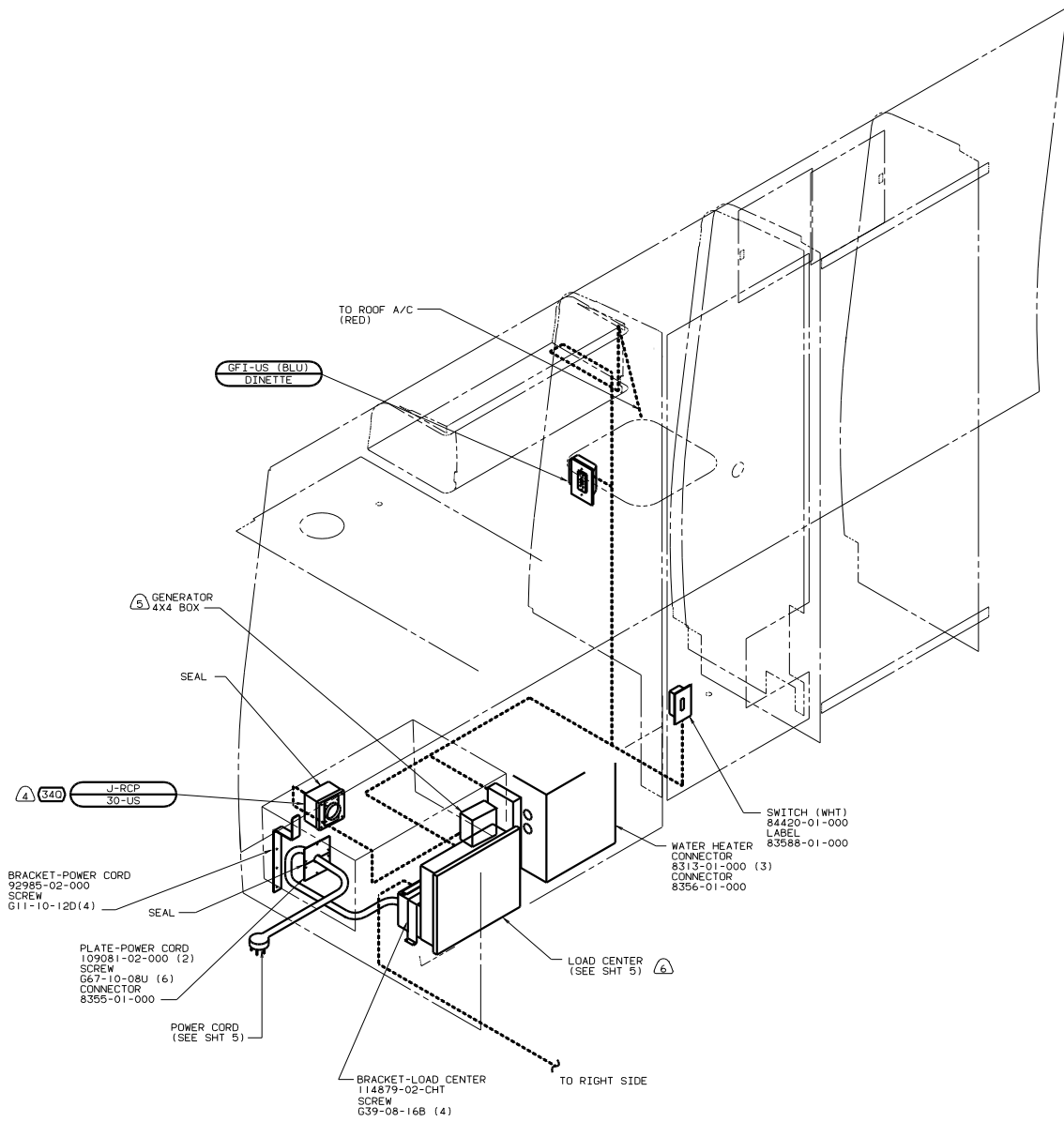
WINNEBAGO 01 22200

OF IN	DATE	UNSPECIFIED TOLERANCES ARE:	MATERIAL
DRP	DATE	WHOLE OR 1/16"	
PIE	DATE	ONE-PLATE (1/16) "	
D/E	DATE	TWO-PLATE (1/32) "	
DATE	DATE	MILL	
DATE	DATE	INDU. W/AVE. PRODUCTION	

WIRING INSTL - BODY . 110V (130US)

SHEET 1 OF 6

REF: 133421 D I



- ⑥ LOCATE LOAD CENTER WITHIN DINETTE SEAT FACE.
- ⑤ SEE GENERATOR INSTL FOR ADDITIONAL INFORMATION.
- ④ INSTALL RCP WITH GROUND TOWARD BOTTOM OF VEHICLE.
- 3. ALL GROUND WIRES TO BE COVERED WITH TUBING 8041-02-000.
- 2. ALL WIRES ARE TO BE CLAMPED WITH CLAMP 10497-05-000 WITHIN 200 OF OUTLET BOXES. USE SCREW G67-10-12B.
- 1. ALL WIRES TO BE CLAMPED WITH CLAMP 10495-01-000 OR CLIP 80734-01-000 EVERY 600. USE SCREW G67-10-12B UNLESS OTHERWISE SPECIFIED.

NOTES:

- ③40 GEN-3.0KW GENERAC 100V
- ②9K A/C ROOF-ONE 7,100 BTU
- ①2D ELECTRICAL SYSTEM 30 AMP
- ①4L JAPAN EXPORT PACKAGE

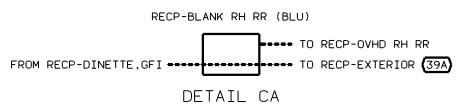
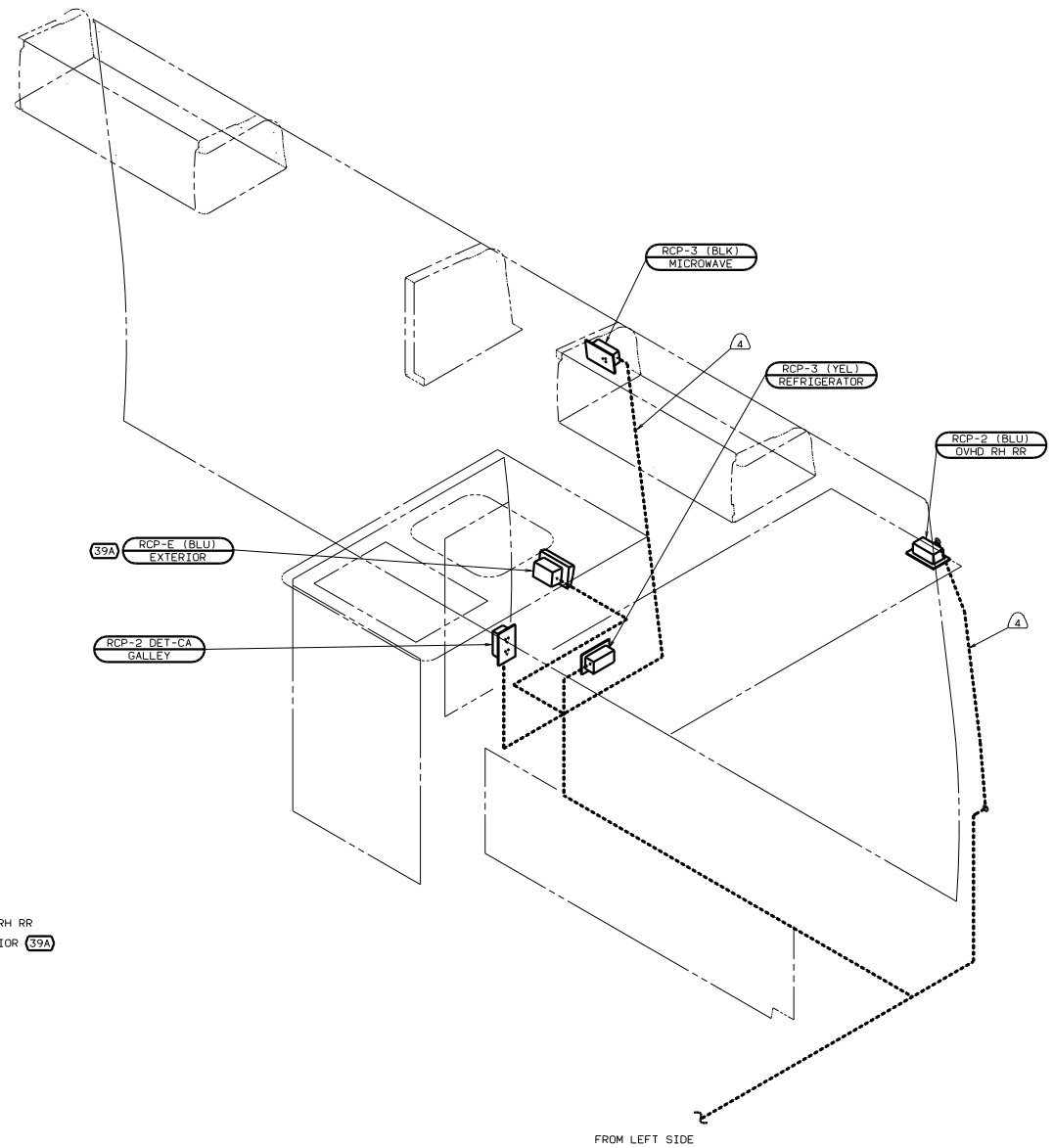
FOR ELECTRICAL TORQUE SPECIFICATIONS SEE DWG NO. 128783-01-000

FOR ELECTRICAL CALLOUTS SEE DWG NO. 121339-01-000

①4L ①2D ②9K 01 2220D

WIRING INSTL - BODY, 110V(L30JPN)

SHEET 2 OF 6



FROM LEFT SIDE

- 4 ROUTE WIRE THRU SIDEWALL.
- ALL GROUND WIRES TO BE COVERED WITH TUBING 8041-02-000.
  - ALL WIRES ARE TO BE CLAMPED WITH CLAMP 10497-05-000 WITHIN 200 OF OUTLET BOXES, USE SCREW G67-10-12B.
  - ALL WIRES TO BE CLAMPED WITH CLAMP 10495-01-000 OR CLIP 80734-01-000 EVERY 600, USE SCREW G67-10-12B UNLESS OTHERWISE SPECIFIED.

NOTES:

- 39A EXT RECEPTACLE DPLX 120VAC
- 265 CODES/STANDARDS-CSA/CMVSS
- 1B1 CODES STANDARDS/USA
- 120 ELECTRICAL SYSTEM 30 AMP
- 04L JAPAN EXPORT PACKAGE

FOR ELECTRICAL TORQUE SPECIFICATIONS SEE DWG NO. 128783-01-000

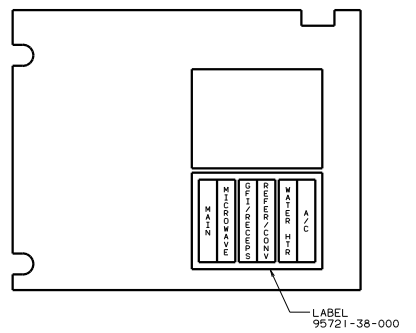
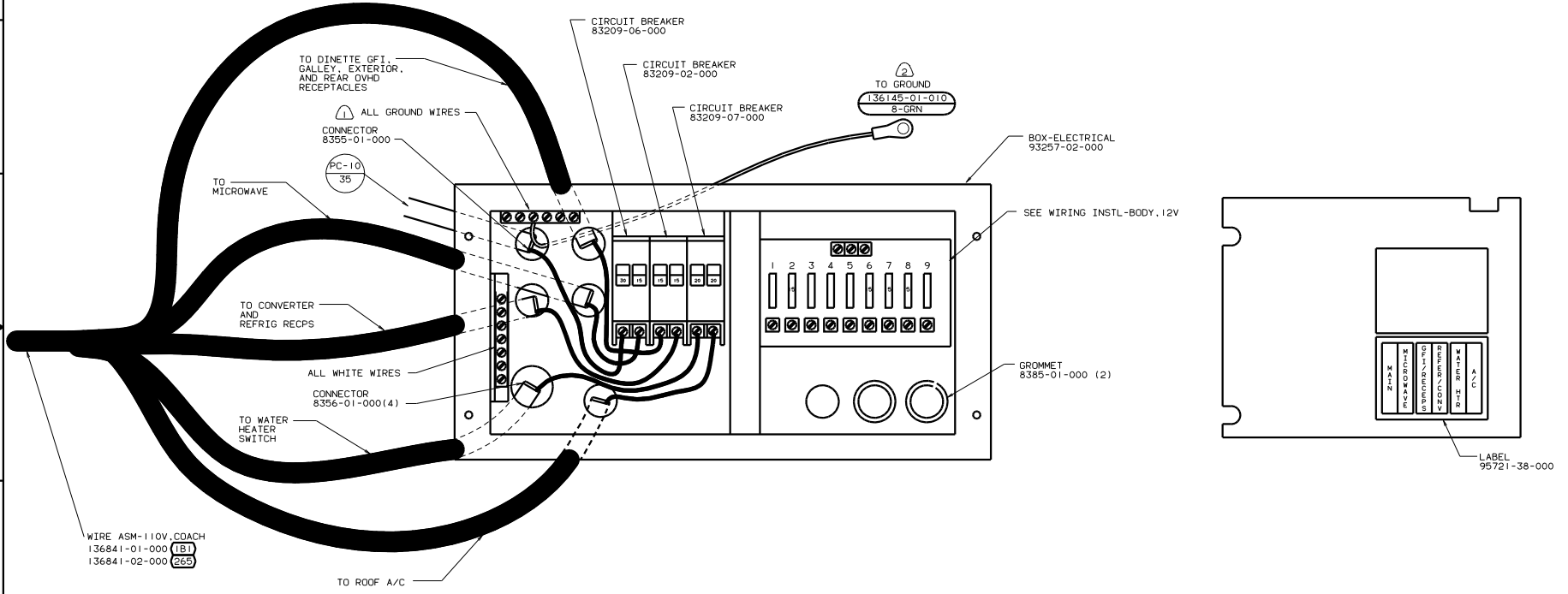
X-X FOR ELECTRICAL CALLOUTS SEE DWG NO. 121339-01-000

04L 120 1B1 265 01 2220D

WIRING INSTL - BODY 110V(R30US)

SHEET 3 OF 6

135871



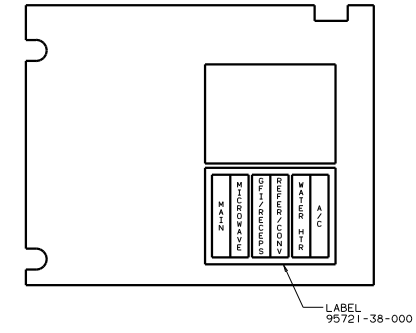
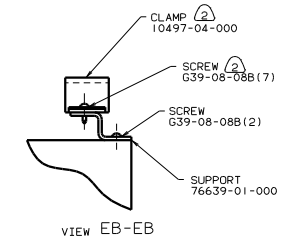
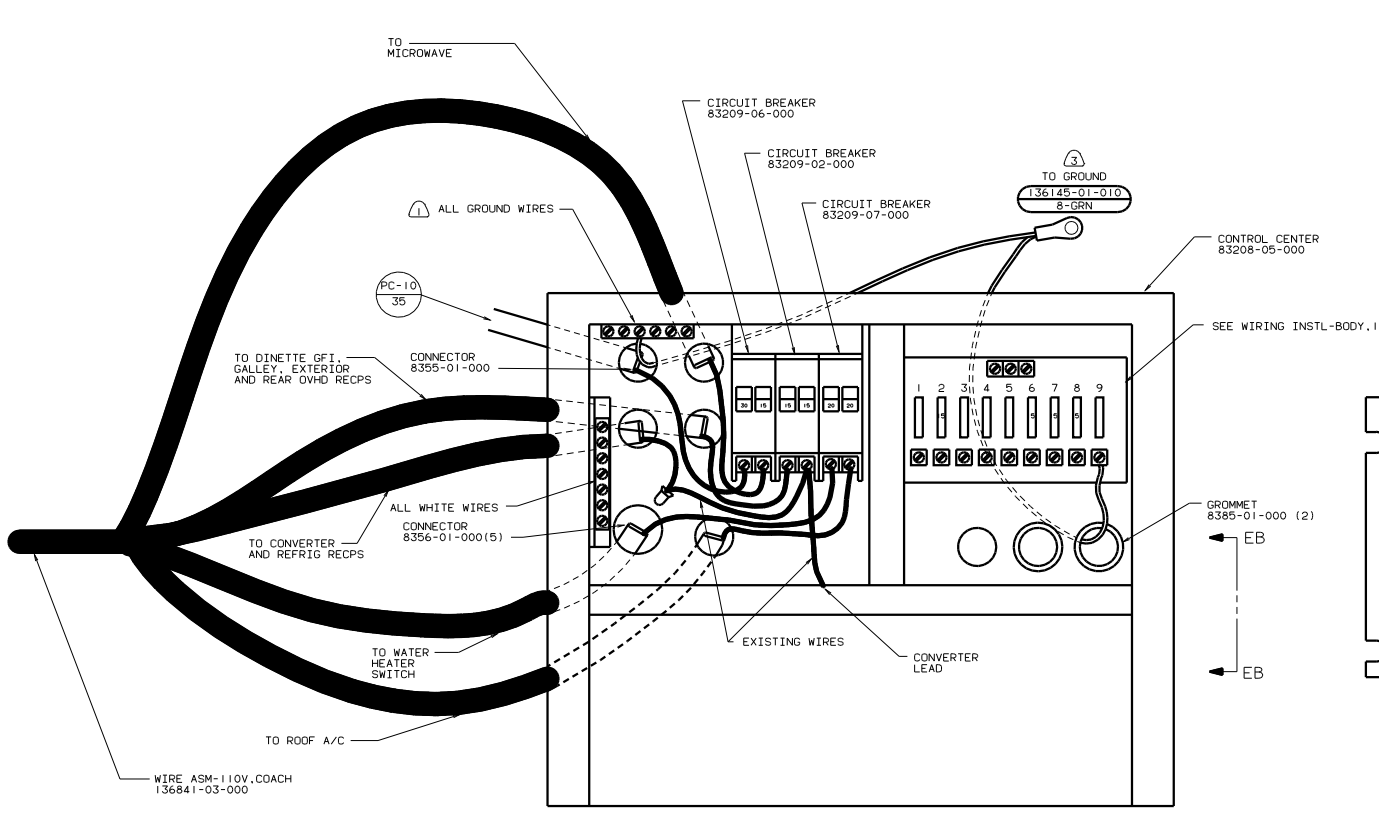
WIRE ASM-110V, COACH  
136841-01-000 (1B)  
136841-02-000 (265)

- NOTES:
- Ⓐ LEAVE CONDUIT OFF SPECIFIED LENGTH FOR ROUTING PURPOSES.
  - 4. 110V CABLES IN LOAD CENTER SHALL BE 200 LONG.
  - 3. ALL CABLES TO BE COVERED WITH CONVOLUTE SLIT 41953-01-000 600 LESS THAN CABLE LENGTH, UNLESS OTHERWISE SPECIFIED.
  - Ⓒ SOLDER DIP STRIPED END OF 8GA WIRE.
  - Ⓓ ALL GROUND WIRES TO BE COVERED WITH TUBING 8041-02-000.

FOR ELECTRICAL TORQUE SPECIFICATIONS SEE DWG NO. 128783-01-000	X-X	FOR ELECTRICAL CALLOUTS SEE DWG NO. 121339-01-000
--	-----	---

(265) CODES/STANDARDS-CSA/CMVSS  
(1B1) CODES STANDARDS/USA  
(120) ELECTRICAL SYSTEM 30 AMP  
(1B1) (120) (265) 01 22200

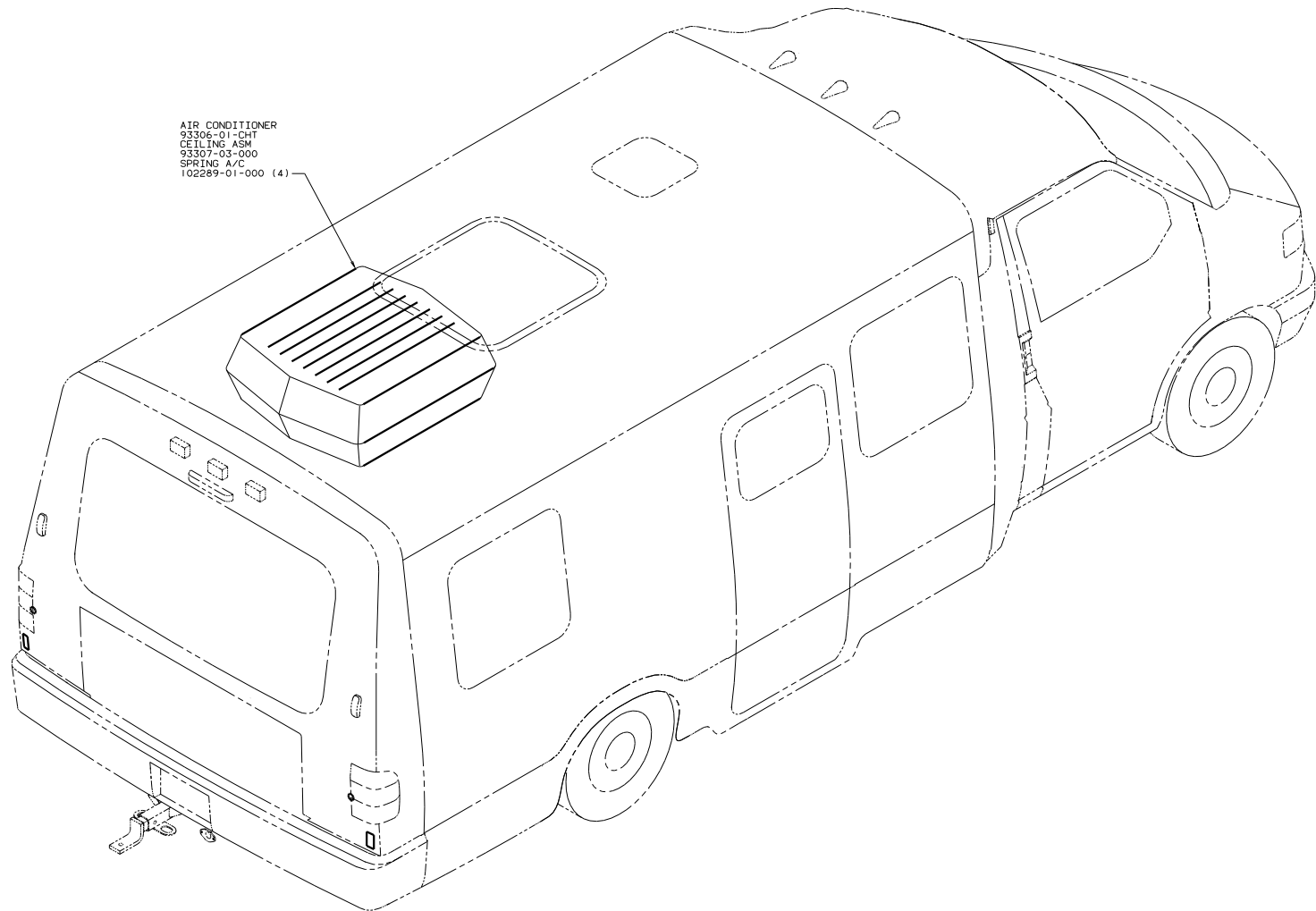
WIRING INSTL-BODY, 110V(LC30US)	
30 AMP 30 AMP 30 AMP	135871
SHEET 4 OF 6	FIG NO



- NOTES:
- ⑥ LEAVE CONDUIT OFF SPECIFIED LENGTH FOR ROUTING PURPOSES.
  - 5. 110V CABLES IN LOAD CENTER SHALL BE 200 LONG.
  - 4. ALL CABLES TO BE COVERED WITH CONVOLUTE SLIT 41953-01-000 600 LESS THAN CABLE LENGTH, UNLESS OTHERWISE SPECIFIED.
  - ③ SOLDER DIP STRIPPED ENDS OF 8GA WIRES.
  - ② FASTEN ALL WIRES TO SUPPORT. USE ONE SCREW PER CLAMP.
  - ① ALL GROUND WIRES TO BE COVERED WITH TUBING 8041-02-000.

FOR ELECTRICAL TORQUE SPECIFICATIONS SEE DWG NO. 128783-01-000	(X-X)	FOR ELECTRICAL CALLOUTS SEE DWG NO. 121339-01-000
--	-------	---

①2D ELECTRICAL SYSTEM 30 AMP  
 ④4L JAPAN EXPORT PACKAGE  
 ④4L ①2D 01 2220D



AIR CONDITIONER  
 93306-01-CHT  
 CEILING ASM  
 93307-03-000  
 SPRING A/C  
 102289-01-000 (4)

- (29K) A/C ROOF-ONE 7,100 BTU
- (265) CODES/STANDARDS-CSA/CMVSS
- (1B1) CODES STANDARDS/USA
- (04L) JAPAN EXPORT PACKAGE
- (04L) (1B1) (265) (29K) 01 222QD

FOR ELECTRICAL  
 TORQUE  
 SPECIFICATIONS  
 SEE DWG NO.  
 128783-01-000

TITLE: WIRING INSTL-BODY, L10V(EXT)  
 SHEET 6 OF 6

NOTES:

