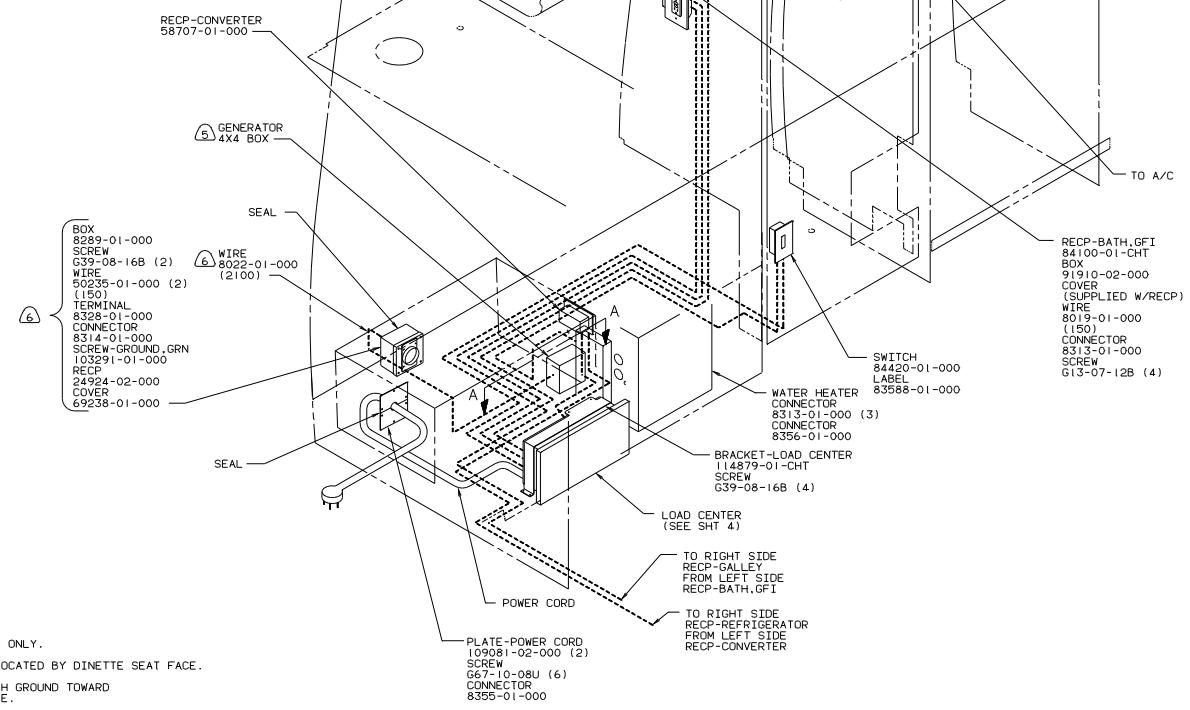


VIEW A-A

- BOX 91910-02-000
- SCREW 613-07-12B (4)
- COVER 91926-01-CHT
- LABEL 91243-01-000
- CONNECTOR 8313-01-000 (3)
- PLUG 81211-02-000 (2)



- BOX 8289-01-000
- SCREW G39-08-16B (2)
- WIRE 50235-01-000 (2)
- TERMINAL 8328-01-000
- CONNECTOR 8314-01-000
- SCREW-GROUND, GRN 103291-01-000
- RECP 24924-02-000
- COVER 69238-01-000

- RECP-BATH, GFI 84100-01-CHT
- BOX 91910-02-000
- COVER (SUPPLIED W/RECP)
- WIRE 8019-01-000 (150)
- CONNECTOR 8313-01-000
- SCREW 613-07-12B (4)

- WATER HEATER CONNECTOR 8313-01-000 (3)
- CONNECTOR 8356-01-000
- SWITCH 84420-01-000
- LABEL 83588-01-000

- BRACKET-LOAD CENTER 114879-01-CHT
- SCREW G39-08-16B (4)

- LOAD CENTER (SEE SHT 4)

- TO RIGHT SIDE RECP-GALLEY FROM LEFT SIDE RECP-BATH, GFI
- TO RIGHT SIDE RECP-REFRIGERATOR FROM LEFT SIDE RECP-CONVERTER

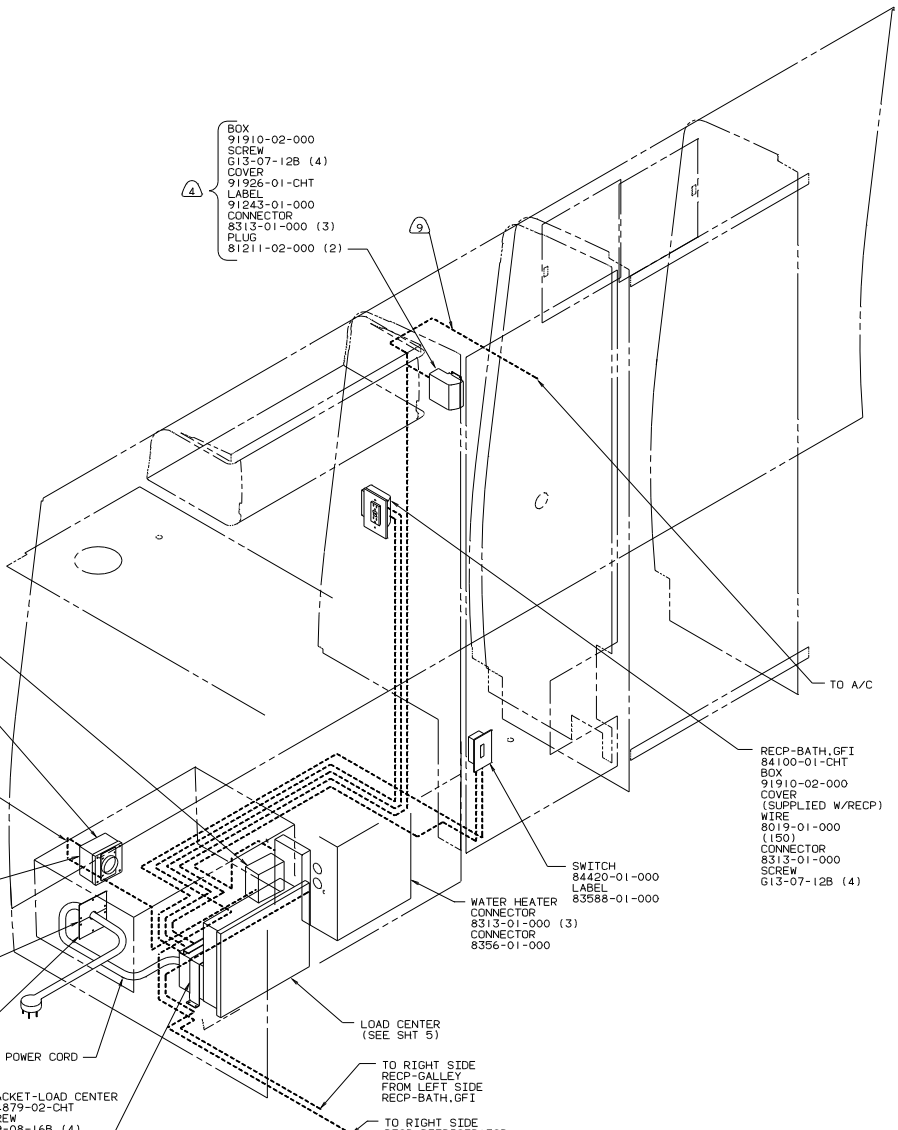
- PLATE-POWER CORD 109081-02-000 (2)
- SCREW 667-10-08U (6)
- CONNECTOR 8355-01-000

- 9 WITH FACTORY A/C ONLY.
 - 8 LOAD CENTER IS LOCATED BY DINETTE SEAT FACE.
 - 7 INSTALL RECP WITH GROUND TOWARD BOTTOM OF VEHICLE.
 - 6 USE WITH GENERATOR ONLY.
 - 5 SEE GENERATOR INSTL FOR ADDITIONAL INFORMATION.
 - 4 USE WITHOUT FACTORY A/C.
3. ALL GROUND WIRES TO BE COVERED WITH TUBING 8041-02-000.
2. ALL WIRES ARE TO BE CLAMPED WITH CLAMP 10497-05-000 WITHIN 200 OF OUTLET BOXES. USE SCREW G67-10-12B.
1. ALL WIRES TO BE CLAMPED WITH CLAMP 10495-01-000 OR CLIP 80734-01-000 EVERY 600. USE SCREW G67-10-12B UNLESS OTHERWISE SPECIFIED.

NOTES:

110V LEFT (US)

WINNEBAGO		94 H-SERIES
OPTD	UNSPECIFIED TOLERANCES ARE	MATERIAL
CHRP	WALLS 0.063 IN	
FR	ONE-PLATE (1X 31)	
FR	TWO-PLATE (1X 33)	
FR	WALLS	
CON	TWO-WALL PROJECTION	
LANE	TITLE: WIRING INSTL-BODY	
REV	NO	DATE
1	1	112620
SHEET 1 OF 7		112620



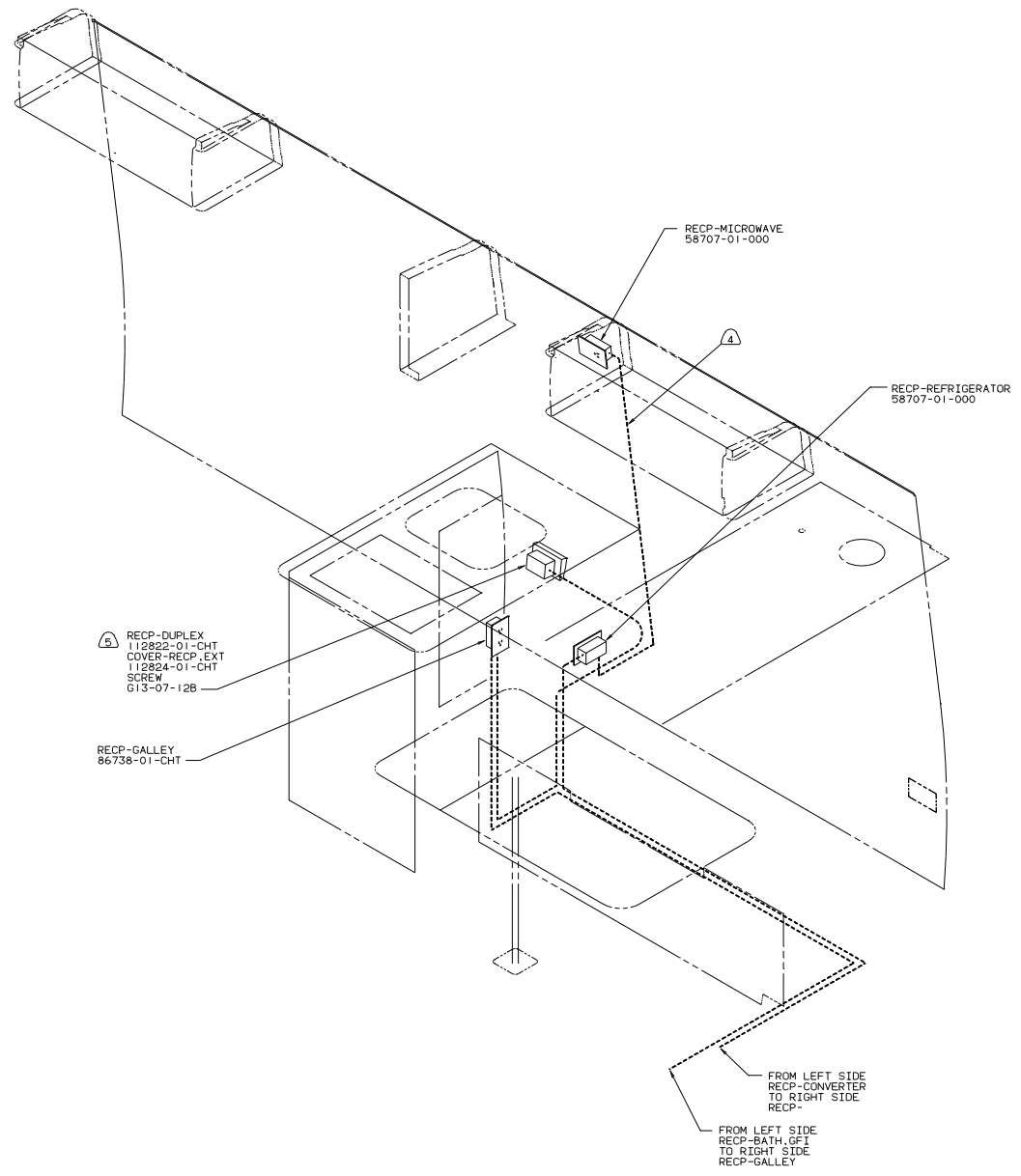
- 9 WITH FACTORY A/C ONLY.
- 8 LOAD CENTER IS LOCATED BY DINETTE SEAT FACE.
- 7 INSTALL RECP WITH GROUND TOWARD BOTTOM OF VEHICLE.
- 6 USE WITH GENERATOR ONLY.
- 5 SEE GENERATOR INSTL FOR ADDITIONAL INFORMATION.
- 4 USE WITHOUT FACTORY A/C.

3. ALL GROUND WIRES TO BE COVERED WITH TUBING 8041-02-000.
2. ALL WIRES ARE TO BE CLAMPED WITH CLAMP 10497-05-000 WITHIN 200 OF OUTLET BOXES. USE SCREW G67-10-12B.
1. ALL WIRES TO BE CLAMPED WITH CLAMP 10495-01-000 OR CLIP 80734-01-000 EVERY 600. USE SCREW G67-10-12B UNLESS OTHERWISE SPECIFIED.

NOTES:

110V LEFT
 JAPAN EXPORT PACKAGE
 94 H-SERIES

TITLE: WIRING INSTL-BODY	
30 NET SCALE DRAWING	REV 1.0
SHEET 2 OF 7	FIG NO 112620



5 RECIP-DUPLEX
112822-01-CHT
COVER-RECIP_EXT
112824-01-CHT
SCREW
613-07-12B

RECIP-GALLEY
86738-01-CHT

RECIP-MICROWAVE
58707-01-000

RECIP-REFRIGERATOR
58707-01-000

FROM LEFT SIDE
RECIP-CONVERTER
TO RIGHT SIDE
RECIP-

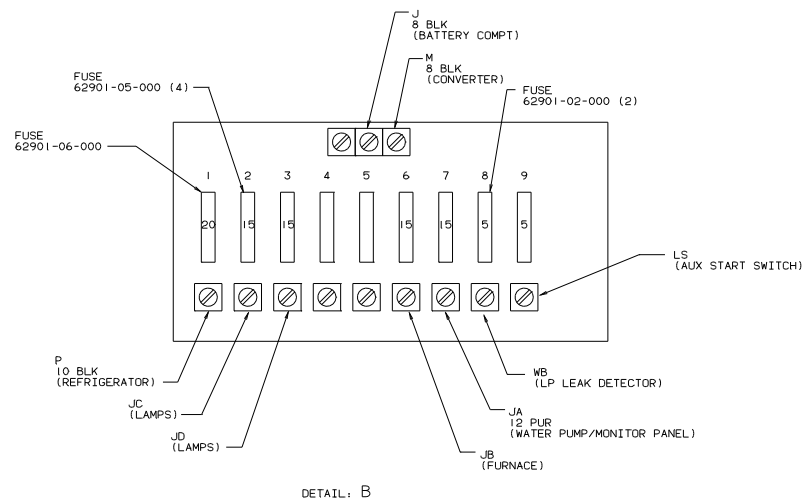
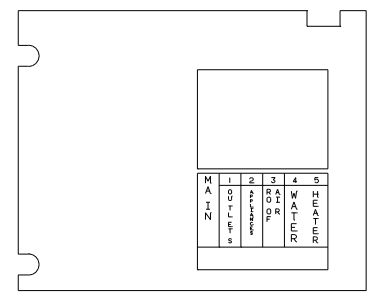
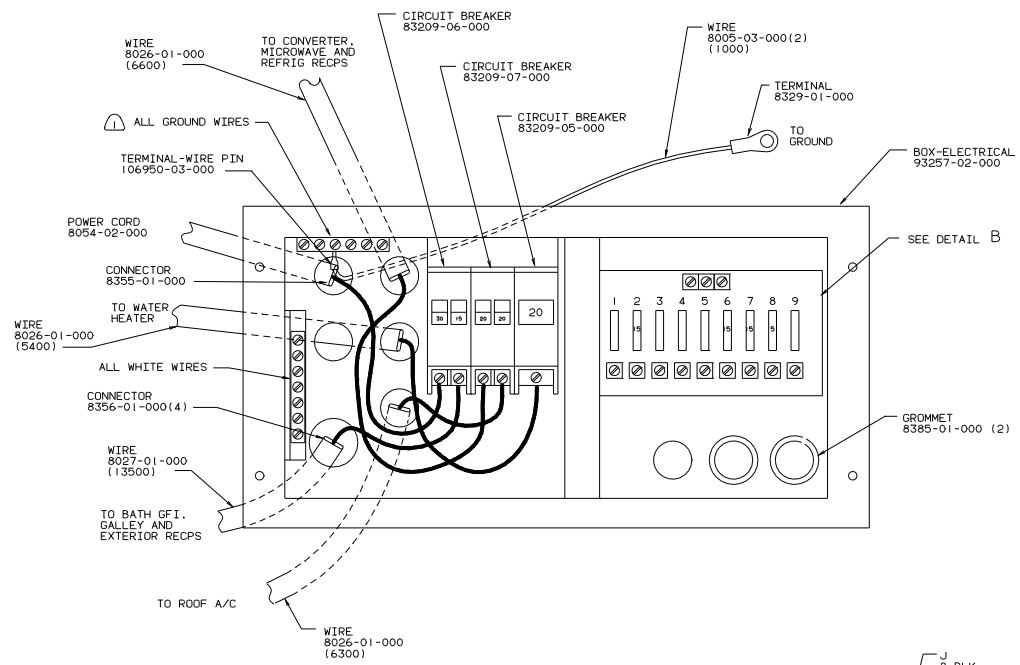
FROM LEFT SIDE
RECIP-BATH, GFI
TO RIGHT SIDE
RECIP-GALLEY

- 5 SEAL BACK SIDE OF RECIP FACE.
4 WIRE ROUTED THRU SIDEWALL.
3. ALL GROUND WIRES TO BE COVERED WITH TUBING 8041-02-000.
 2. ALL WIRES ARE TO BE CLAMPED WITH CLAMP 10497-05-000 WITHIN 200 OF OUTLET BOXES. USE SCREW G67-10-12B.
 1. ALL WIRES TO BE CLAMPED WITH CLAMP 10495-01-000 OR CLIP 80734-01-000 EVERY 600. USE SCREW G67-10-12B UNLESS OTHERWISE SPECIFIED.

NOTES:

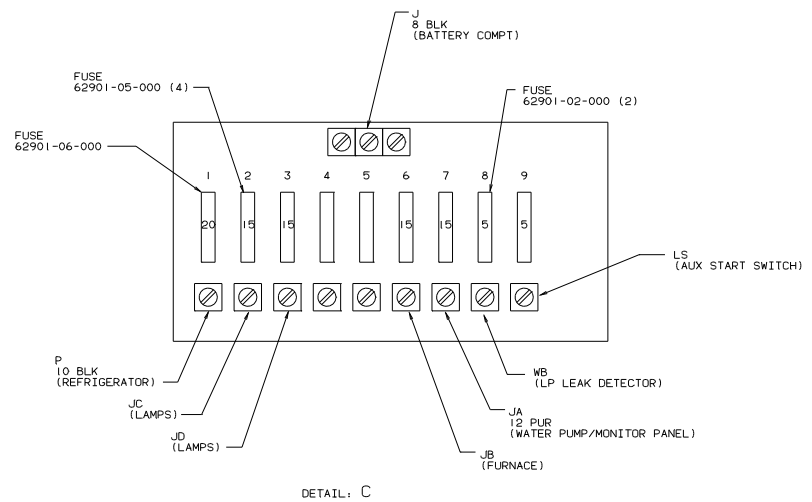
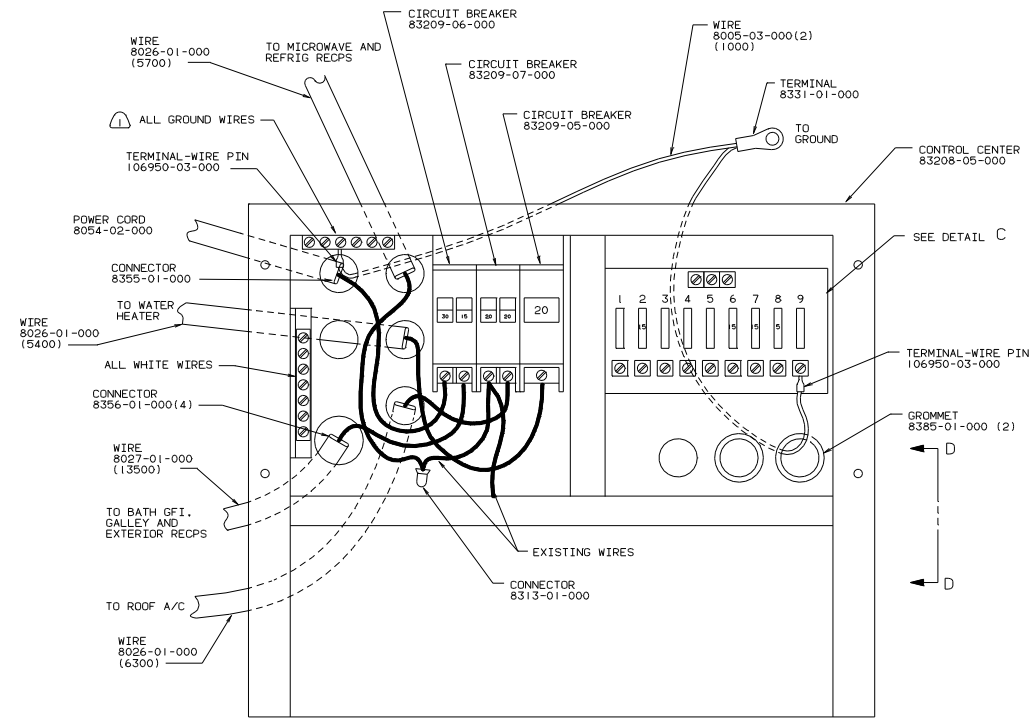
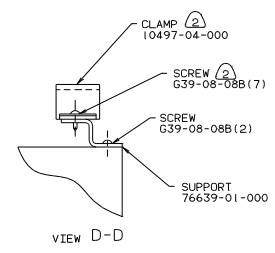
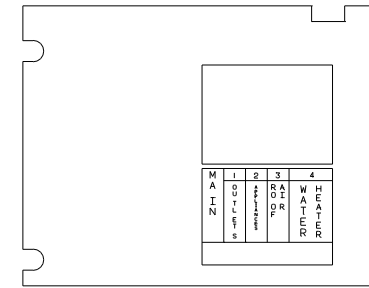
110V RIGHT (US & JAPAN EXPORT PACKAGE)
94 H-SERIES

TITLE: WIRING INSTL-BODY	
30 NET SCALE DRAWING	REV 1
SHEET 3 OF 7	112620



LOAD CENTER (US)
94 H-SERIES

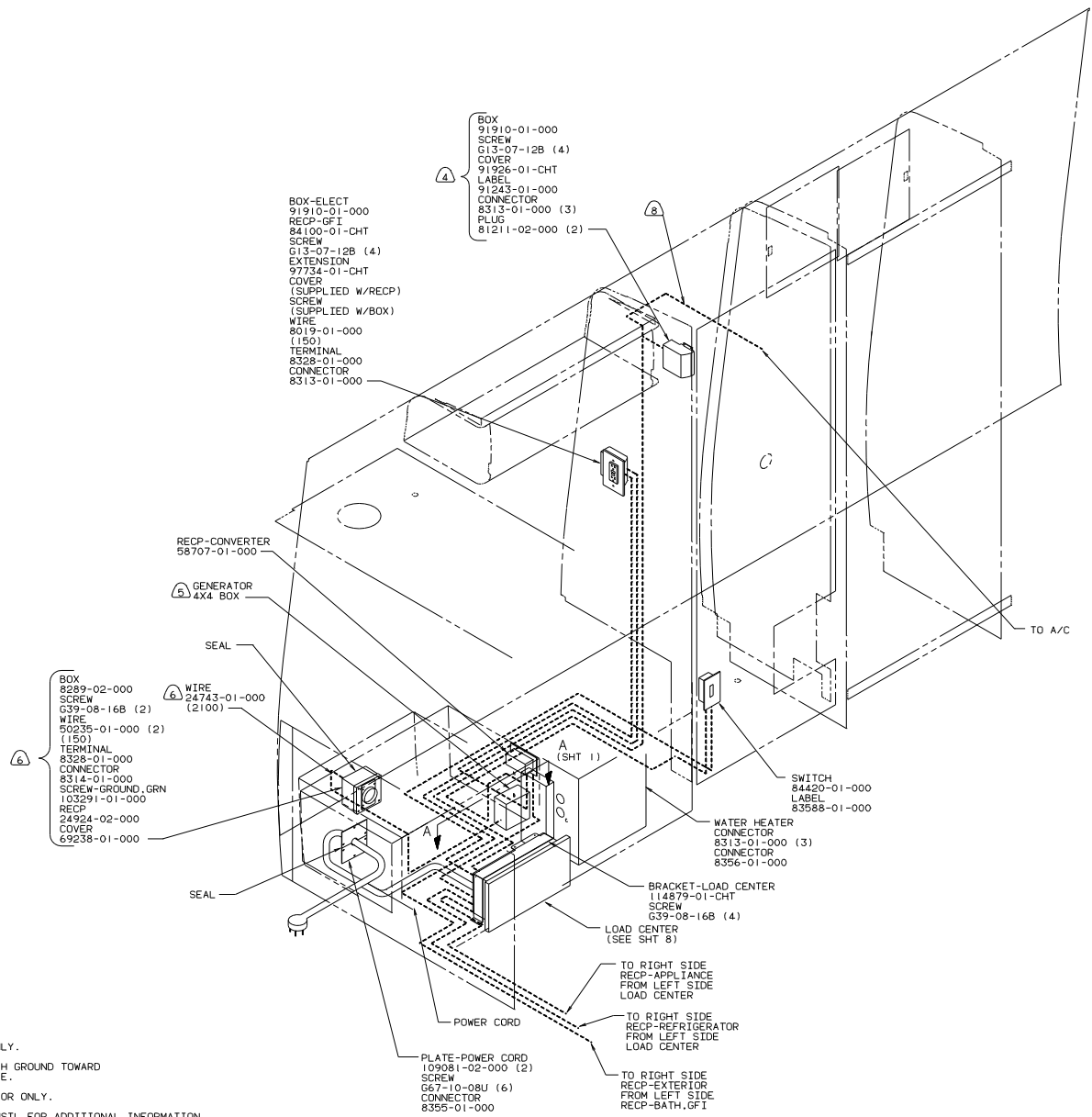
⚠ ALL GROUND WIRES TO BE COVERED WITH TUBING 8041-02-000.



LOAD CENTER
(JAPAN EXPORT PACKAGE)
94-SERIES

TITLE: WIRING INSTL-BODY	
30 NET SCALE DRAWING	REV 1
SHEET 5 OF 17	DATE 112620

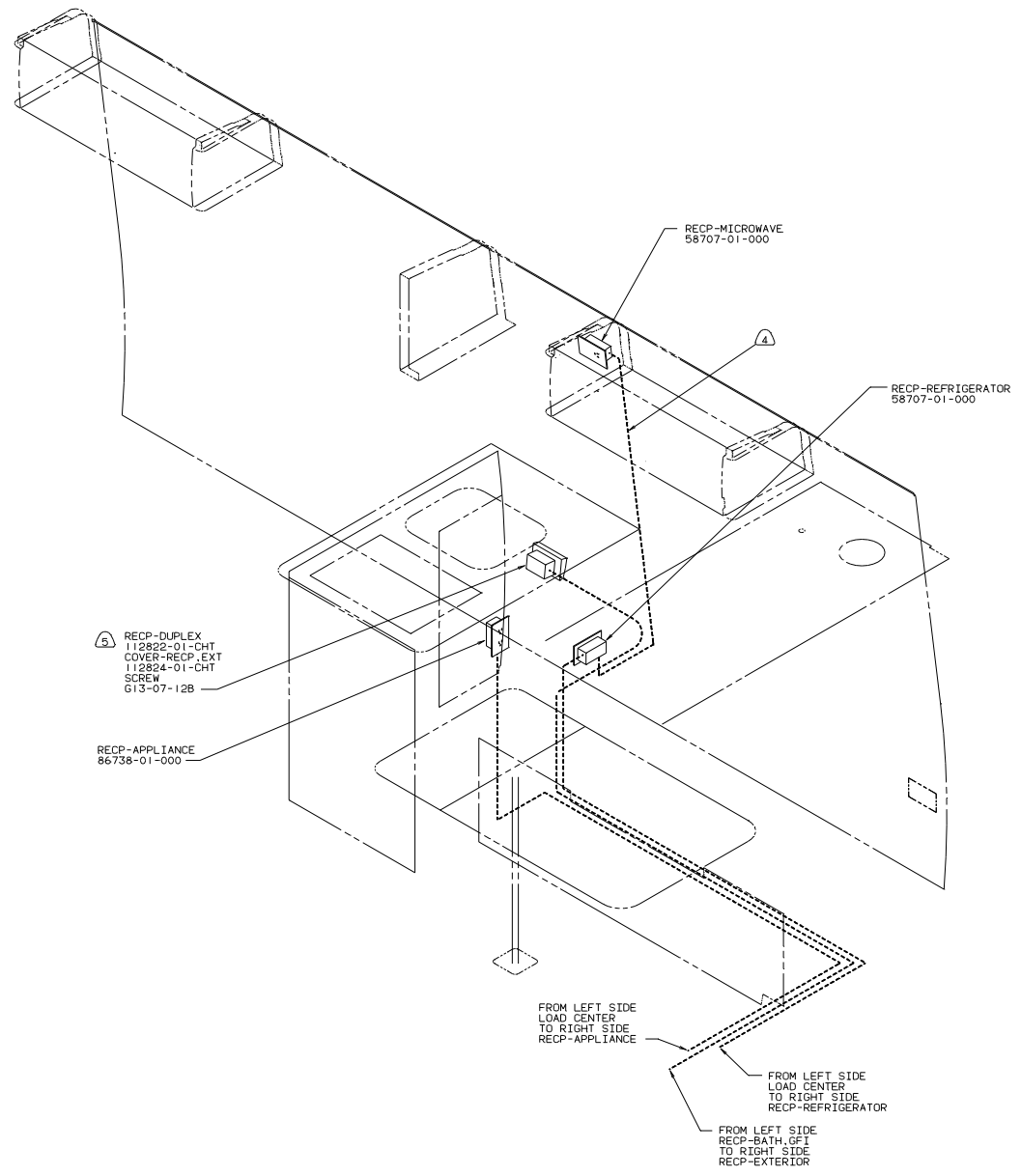
- NOTES:
- 2 FASTEN ALL WIRES TO SUPPORT. USE ONE SCREW PER CLAMP.
 - 1 ALL GROUND WIRES TO BE COVERED WITH TUBING 8041-02-000.



- ⑧ W/FACTORY A/C ONLY.
 - ⑦ INSTALL RECP WITH GROUND TOWARD BOTTOM OF VEHICLE.
 - ⑥ USE WITH GENERATOR ONLY.
 - ⑤ SEE GENERATOR INSTL FOR ADDITIONAL INFORMATION.
 - ④ USE WITHOUT FACTORY A/C.
3. ALL GROUND WIRES TO BE COVERED WITH TUBING 8011-02-000.
 2. ALL WIRES ARE TO BE CLAMPED WITH CLAMP 10497-05-000 WITHIN 200 OF OUTLET BOXES. USE SCREW G67-10-12B.
 1. ALL WIRES TO BE CLAMPED WITH CLAMP 10495-01-000 OR CLIP 80734-01-000 EVERY 600. USE SCREW G67-10-12B UNLESS OTHERWISE SPECIFIED.

110V LEFT (CAN)
94 H-SERIES

TITLE: WIRING INSTL-BODY	
30 NET SCALE DRAWING	REV 1
SHEET 6 OF 17	112620

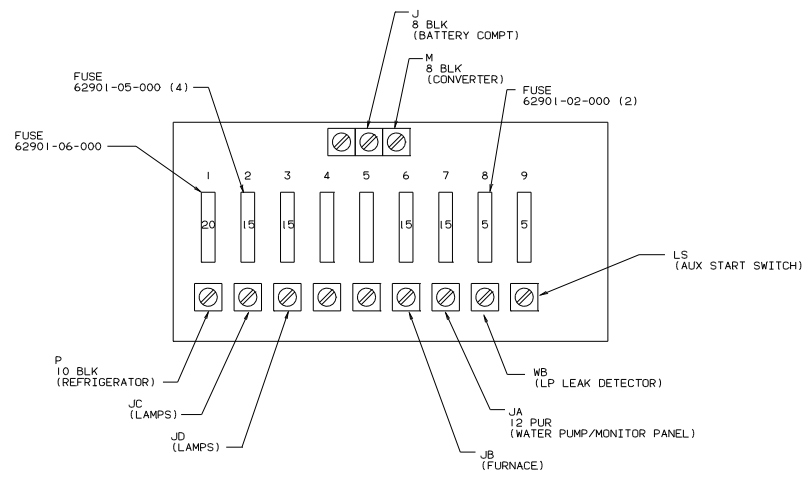
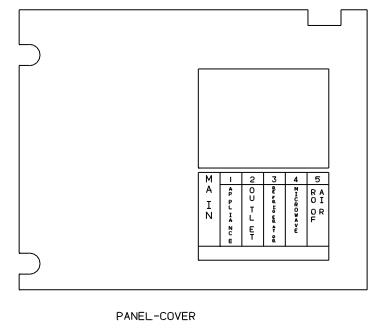
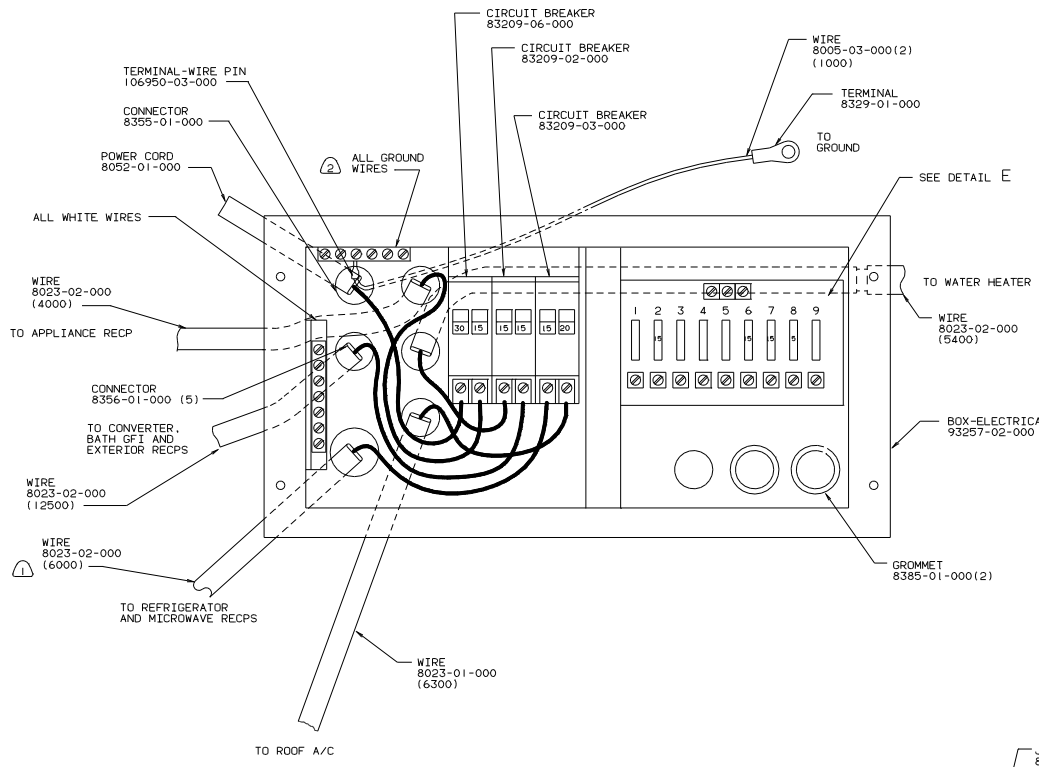


- 5 SEAL BACK SIDE OF RECP FACE.
- 4 WIRE ROUTED IN SIDEWALL.
- 3. ALL GROUND WIRES TO BE COVERED WITH TUBING 8011-02-000.
- 2. ALL WIRES ARE TO BE CLAMPED WITH CLAMP 10497-05-000 WITHIN 200 OF OUTLET BOXES. USE SCREW G67-10-12B.
- 1. ALL WIRES TO BE CLAMPED WITH CLAMP 10495-01-000 OR CLIP 80734-01-000 EVERY 600. USE SCREW G67-10-12B UNLESS OTHERWISE SPECIFIED.

NOTES:

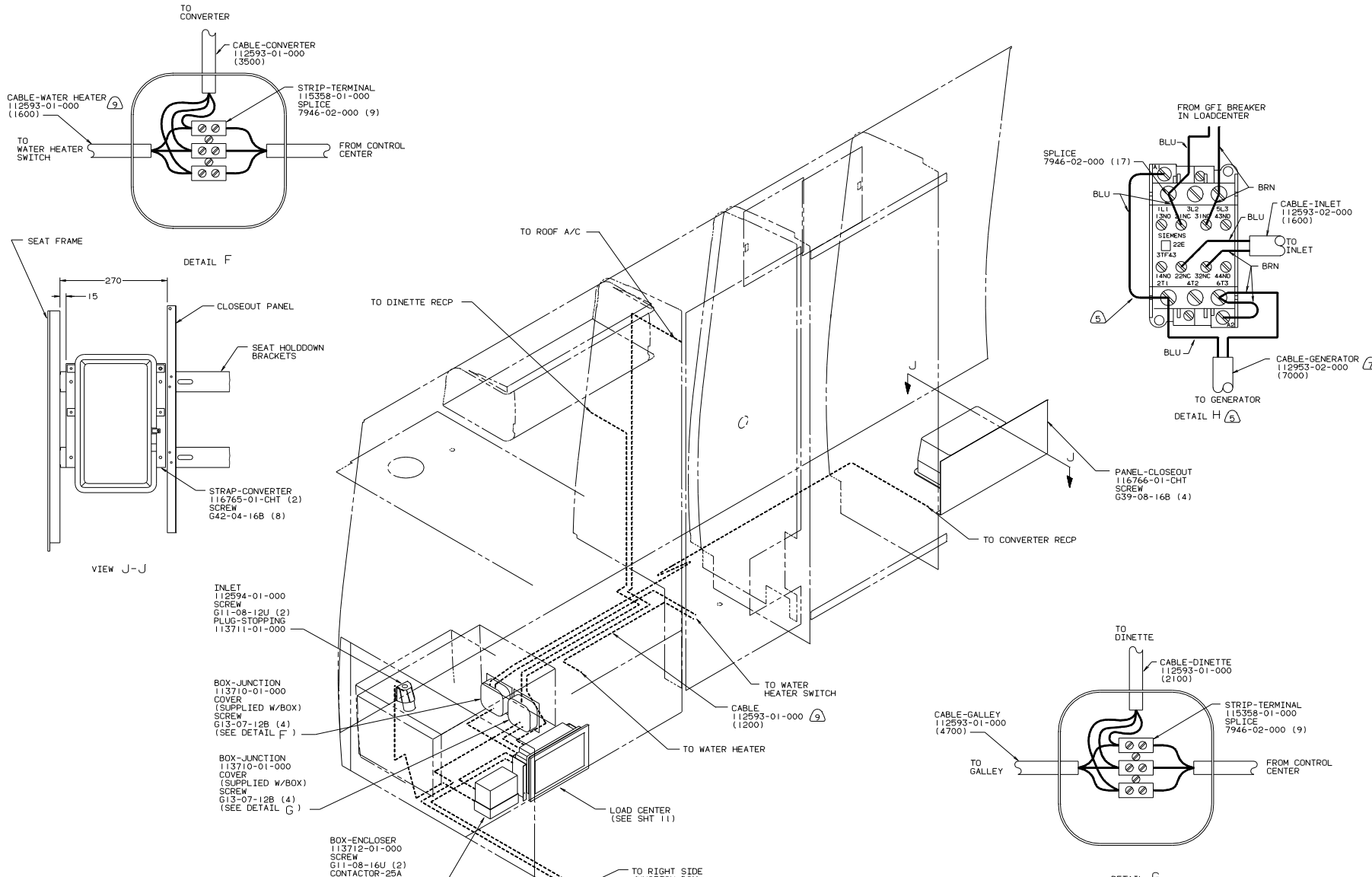
110V RIGHT (CAN)
94 H-SERIES

TITLE: WIRING INSTL-BODY	
30 NET SCALE DRAWING	SHEET 7 OF 7
112620	112620



Ⓜ ALL GROUND WIRES TO BE COVERED WITH TUBING 8041-02-000.
 Ⓛ USE WITH MICROWAVE.

LOAD CENTER (CAN)
 94 H-SERIES



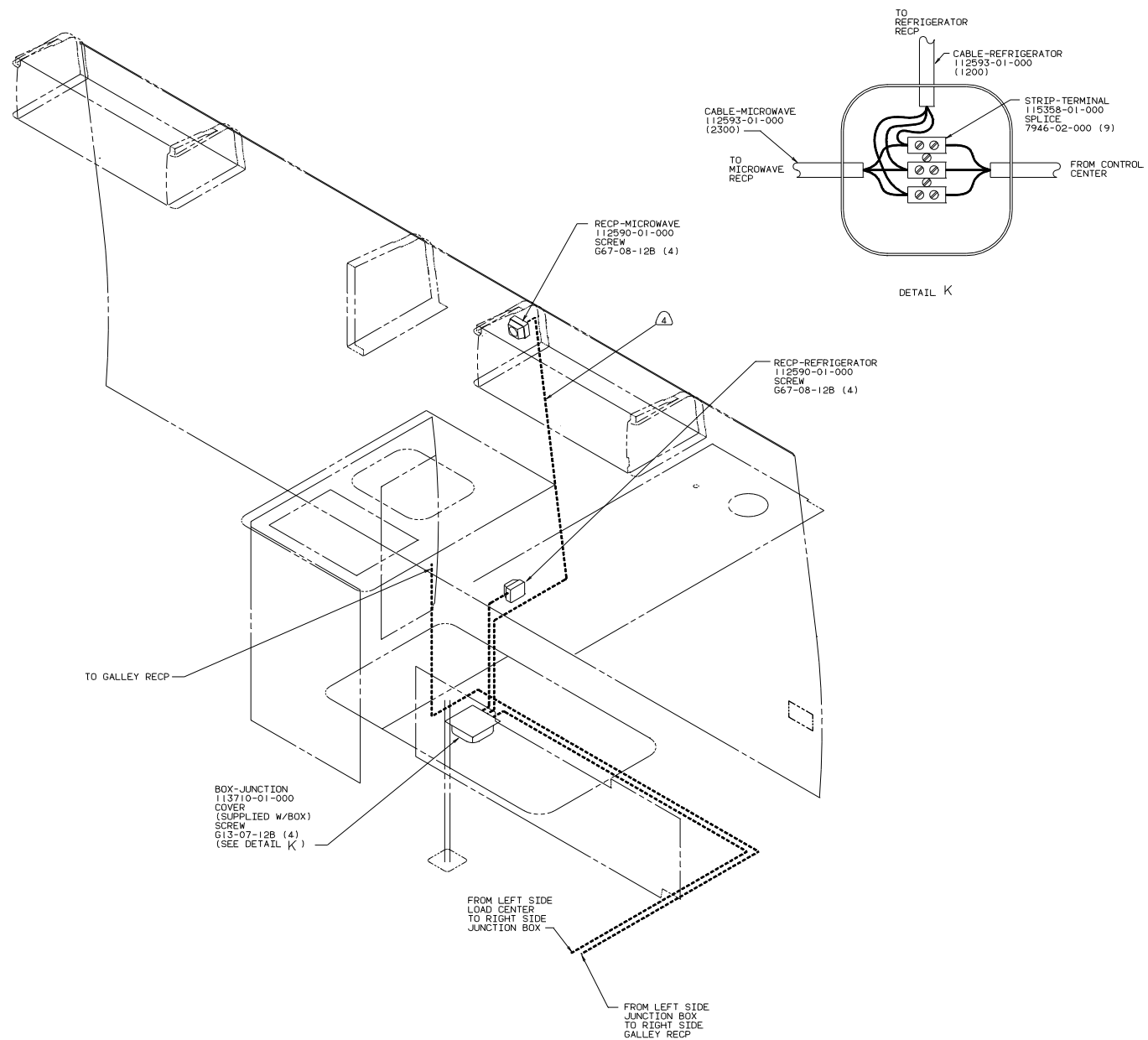
- (9) NOT USED WITH EUROPEAN EXPORT OPTION.
- (8) W/FACORY A/C ONLY.
- (7) INSTALL RECP WITH GROUND TOWARD BOTTOM OF VEHICLE.
- (6) USE WITH GENERATOR ONLY.
- (5) SEE GENERATOR INSTL FOR ADDITIONAL INFORMATION.
- (4) USE WITHOUT FACTORY A/C.

3. ALL GROUND WIRES TO BE COVERED WITH TUBING 8011-02-000.
2. ALL WIRES ARE TO BE CLAMPED WITH CLAMP 10497-05-000 WITHIN 200 OF OUTLET BOXES. USE SCREW G67-10-12B.
1. ALL WIRES TO BE CLAMPED WITH CLAMP 10495-01-000 OR CLIP 80734-01-000 EVERY 600. USE SCREW G67-10-12B UNLESS OTHERWISE SPECIFIED.

NOTES:

220V LEFT
(EUROPEAN ELECTRICAL PREP)
94-SERIES

TITLE		WIRING INSTL-BODY	
30 NET SCALE DRAWING	SHEET	9	17
DATE	REV	1	1
DRAWING NO		112620	

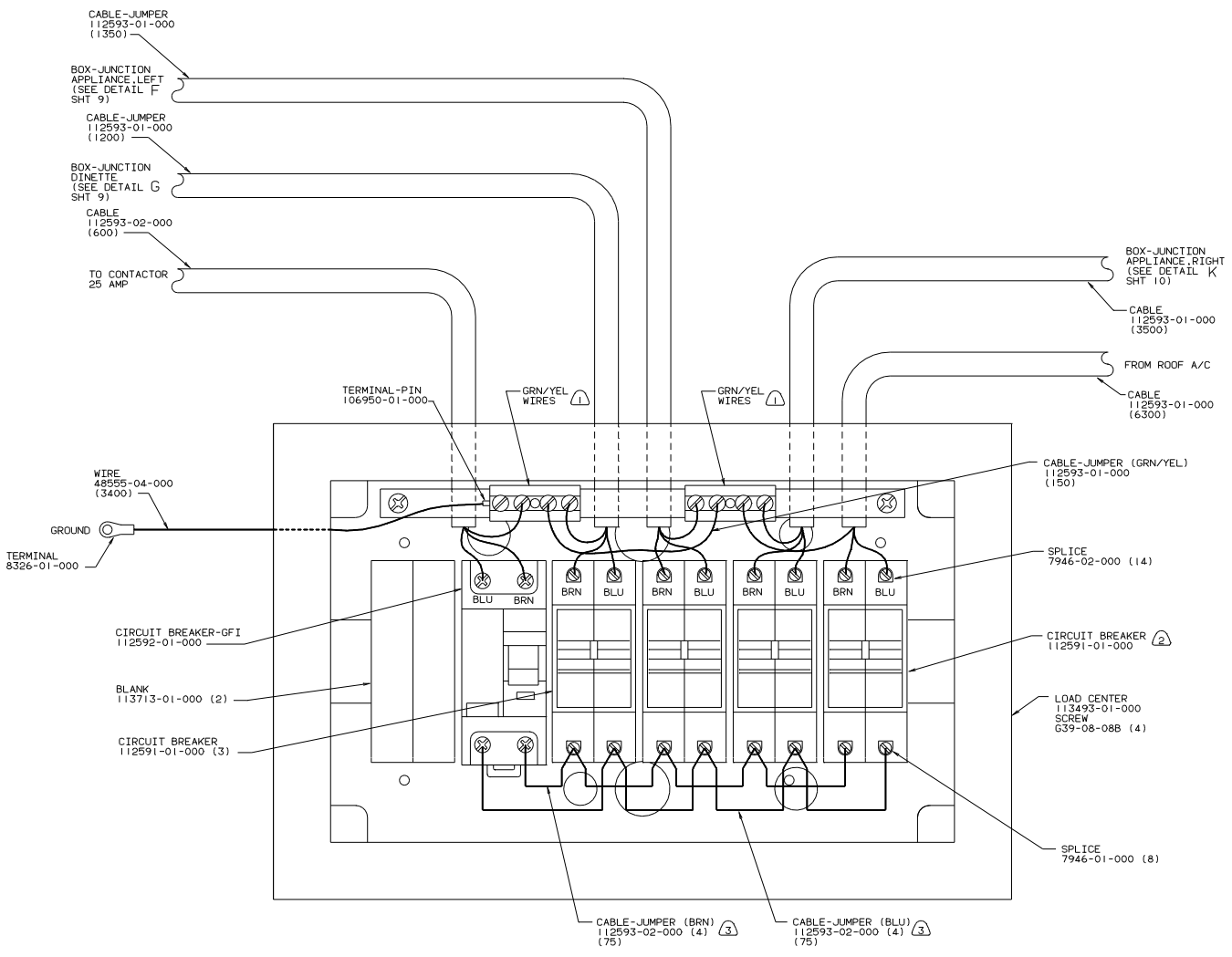


- 5 SEAL BACK SIDE OF RECP FACE.
- 4 WIRE ROUTED IN SIDEWALL.
- 3. ALL GROUND WIRES TO BE COVERED WITH TUBING 8011-02-000.
- 2. ALL WIRES ARE TO BE CLAMPED WITH CLAMP 10497-05-000 WITHIN 200 OF OUTLET BOXES. USE SCREW G67-10-12B.
- 1. ALL WIRES TO BE CLAMPED WITH CLAMP 10495-01-000 OR CLIP 80734-01-000 EVERY 600. USE SCREW G67-10-12B UNLESS OTHERWISE SPECIFIED.

NOTES:

220V RIGHT
(EUROPEAN ELECTRICAL PREP)
94-SERIES

TITLE: WIRING INSTL-BODY	
30 NET SCALE DRAWING	REV 1
SHEET 10 OF 17	112620

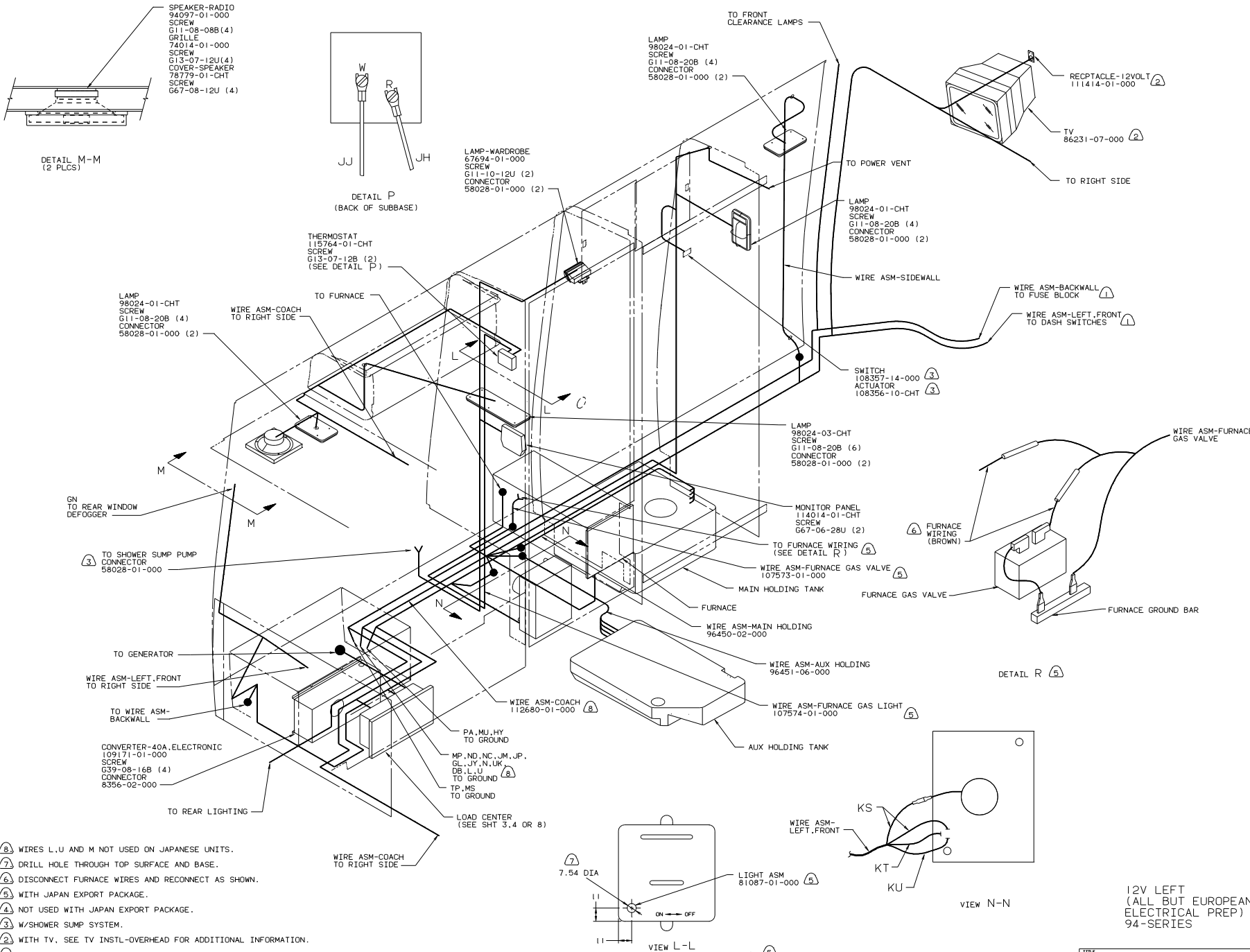


- ③ BROWN WIRES ARE LINE LOAD, BLUE WIRES ARE NEUTRAL.
- ② USE WITH A/C.
- ① ALL GRN/YEL WIRES GO TO GROUND BAR.

NOTES:

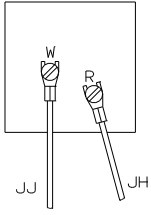
LOAD CENTER
 (EUROPEAN ELECTRICAL PREP)
 94-SERIES

TITLE		WIRING INSTL-BODY	
30 NET SCALE DRAWING	SHEET	11	OF 17
DESIGN NO	112620		



SPEAKER-RADIO
94097-01-000
SCREW
G11-08-08B (4)
GRILLE
74014-01-000
SCREW
G13-07-12U (4)
COVER-SPEAKER
78779-01-CHT
SCREW
G67-08-12U (4)

DETAIL M-M
(2 PLCS)



DETAIL P
(BACK OF SUBBASE)

LAMP-WARDROBE
67694-01-000
SCREW
G11-10-12U (2)
CONNECTOR
58028-01-000 (2)

LAMP
98024-01-CHT
SCREW
G11-08-20B (4)
CONNECTOR
58028-01-000 (2)

THERMOSTAT
115764-01-CHT
SCREW
G13-07-12B (2)
(SEE DETAIL P)

LAMP
98024-01-CHT
SCREW
G11-08-20B (4)
CONNECTOR
58028-01-000 (2)

LAMP
98024-01-CHT
SCREW
G11-08-20B (4)
CONNECTOR
58028-01-000 (2)

LAMP
98024-03-CHT
SCREW
G11-08-20B (6)
CONNECTOR
58028-01-000 (2)

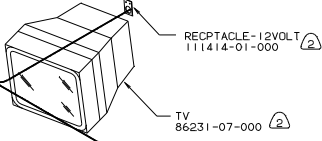
MONITOR PANEL
114014-01-CHT
SCREW
G67-06-28U (2)

WIRE ASM-FURNACE GAS VALVE
107573-01-000

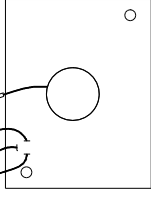
WIRE ASM-AUX HOLDING
96451-06-000

WIRE ASM-FURNACE GAS LIGHT
107574-01-000

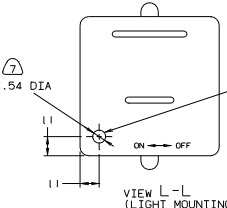
LIGHT ASM
81087-01-000



DETAIL R



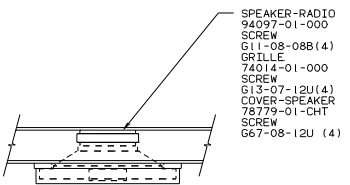
VIEW N-N



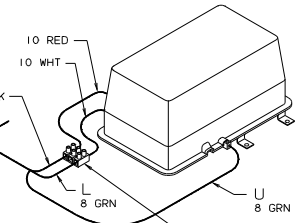
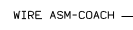
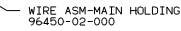
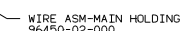
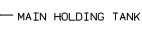
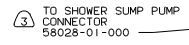
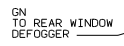
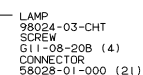
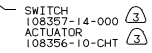
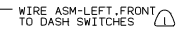
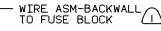
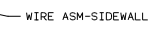
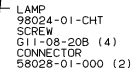
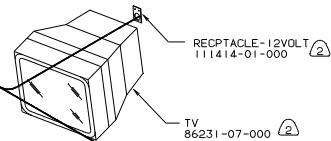
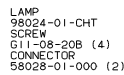
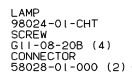
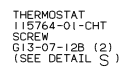
VIEW L-L
(LIGHT MOUNTING HOLE)

TITLE		WIRING INSTL-BODY	
30 NET SCALE DRAWING	REV	1 of 17	112620
SHEET	12	OF	17

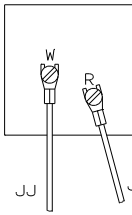
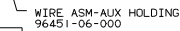
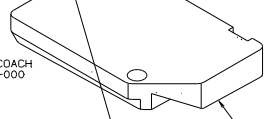
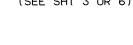
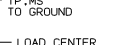
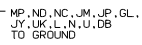
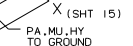
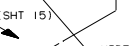
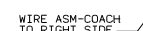
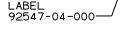
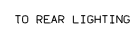
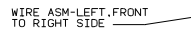
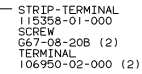
- ① WIRES L,U AND M NOT USED ON JAPANESE UNITS.
- ② DRILL HOLE THROUGH TOP SURFACE AND BASE.
- ③ DISCONNECT FURNACE WIRES AND RECONNECT AS SHOWN.
- ④ WITH JAPAN EXPORT PACKAGE.
- ⑤ NOT USED WITH JAPAN EXPORT PACKAGE.
- ⑥ W/SHOWER SUMP SYSTEM.
- ⑦ WITH TV. SEE TV INSTL-OVERHEAD FOR ADDITIONAL INFORMATION.
- ⑧ SEE DRAWING INSTL-FRONT END FOR ADDITIONAL INFORMATION.



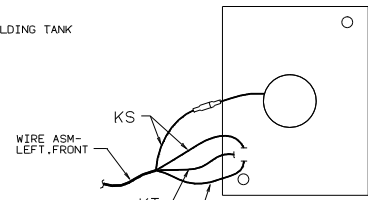
DETAIL T-T
(2 PLCS)



DETAIL V



DETAIL S
(BACK OF SUBBASE)



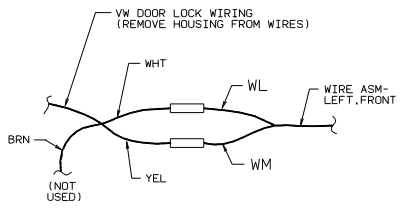
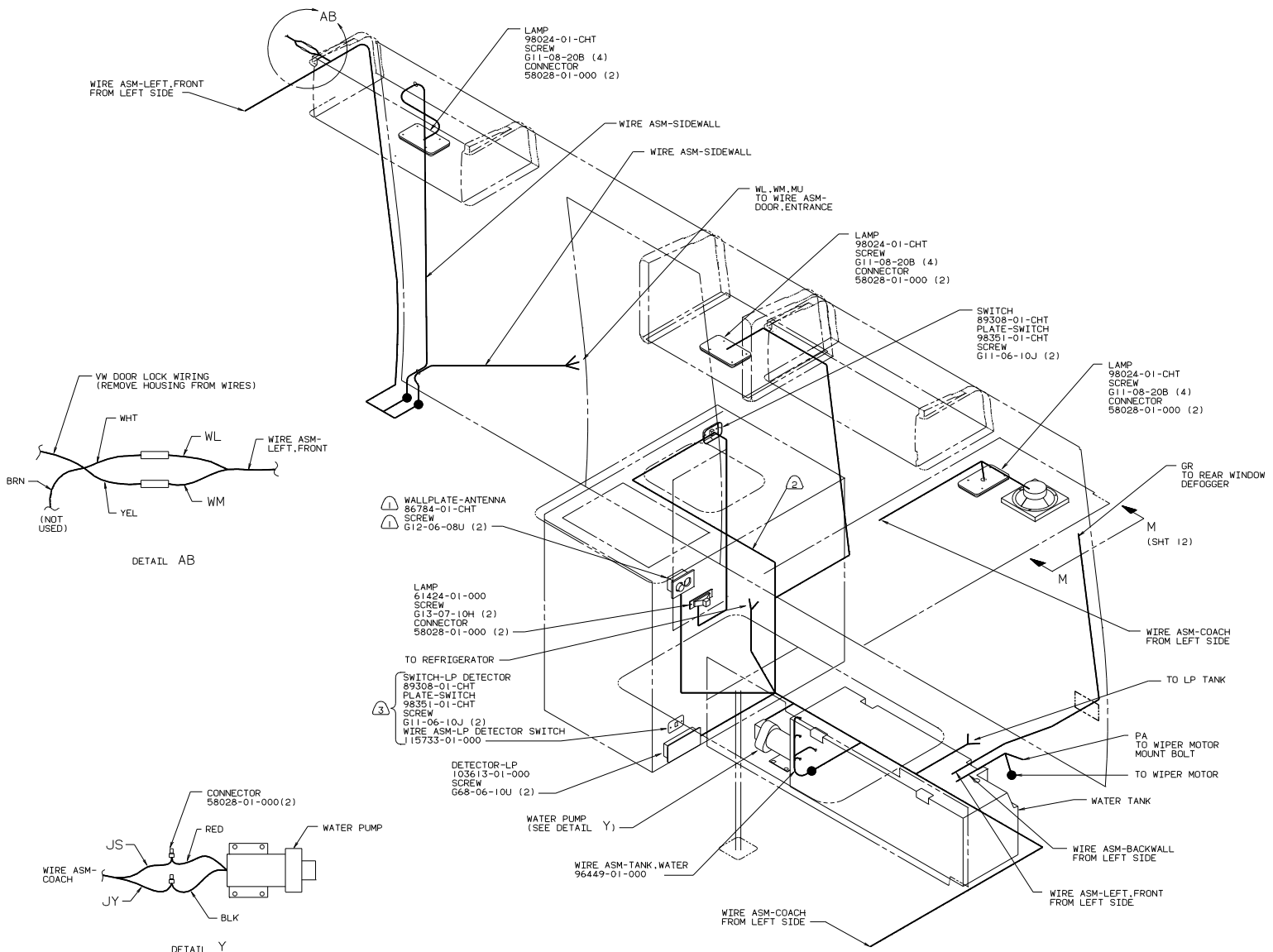
VIEW U-U

12V LEFT (EUR)
94 H-SERIES

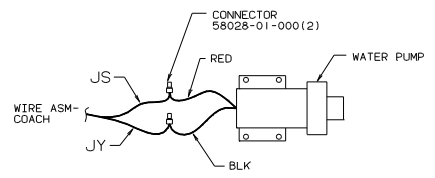
- ③ W/SHOWER SUMP SYSTEM.
- ② WITH TV. SEE TV INSTL-OVERHEAD FOR ADDITIONAL INFORMATION.
- ① SEE DRAWING INSTL-FRONT END FOR ADDITIONAL INFORMATION.

NOTES:

TITLE: WIRING INSTL-BODY	
30 NET SCALE DRAWING	FILE NO
SHEET 13 OF 17	112620



DETAIL AB



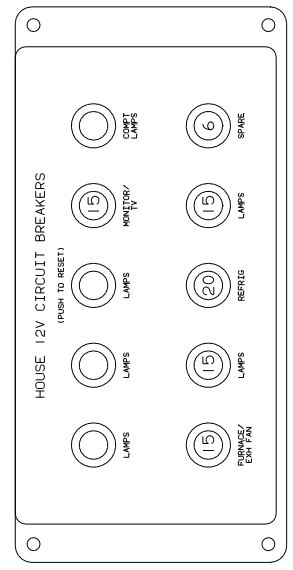
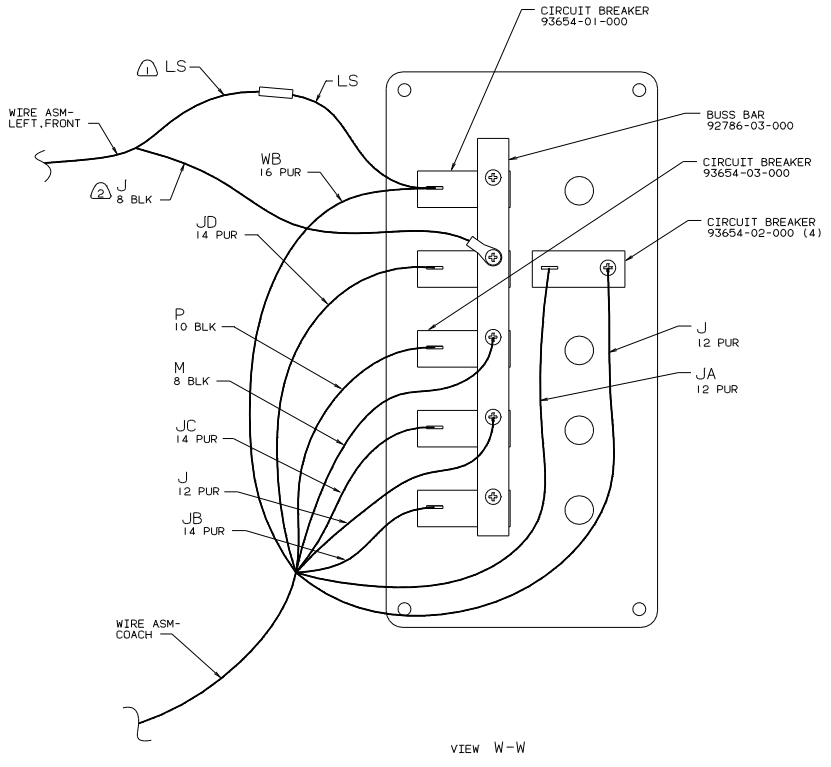
DETAIL Y

- ③ W/JAPAN EXPORT PACKAGE ONLY.
- ② RUN ALONG TOP STICK OF GALLEY DIVIDER PANEL. CLAMP WITH CABLE TIE 108046-01-000 AND SCREW G67-10-12B APPROX. EVERY 750.
- ① W/TV ANTENNA.

NOTES:

12V RIGHT
94 H-SERIES

TITLE: WIRING INSTL-BODY	
30 NET SCALE DRAWING	REV 1.0
SHEET 14 OF 17	112620

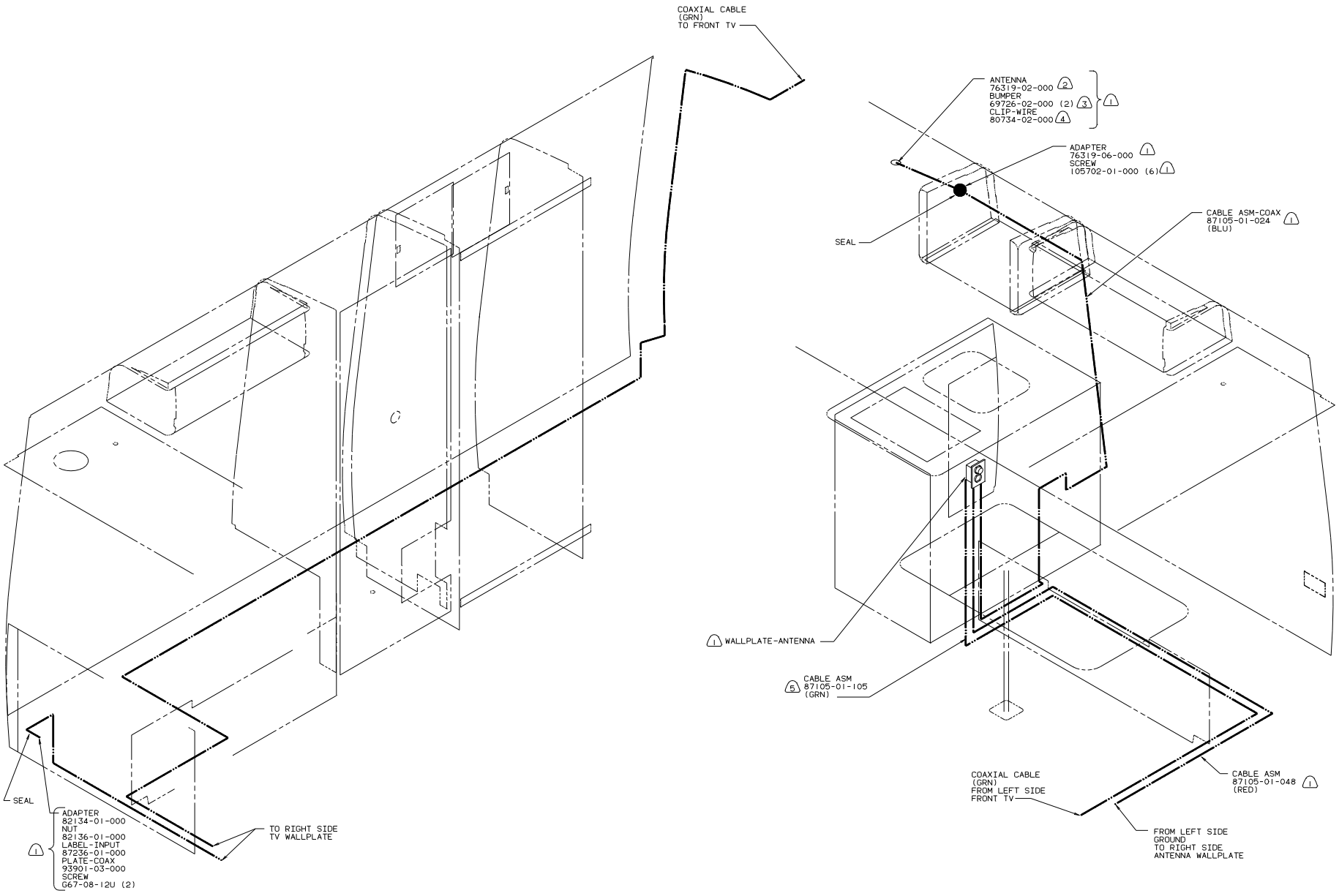


VIEW X-X
(LABEL ORIENTATION)

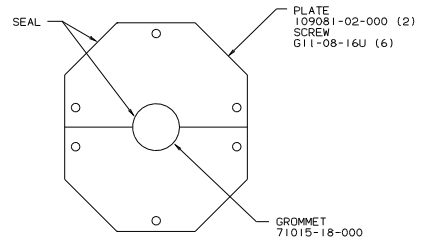
- NOTES:
- ② REMOVE TERMINAL, STRIP WIRE, ADD TERMINAL 102777-03-000 AND CONNECT AS SHOWN.
 - ① REMOVE TERMINAL, STRIP WIRE AND SPLICE TO WIRE LS ON WIRE ASM-COACH.

12V BREAKER PANEL
(EUROPEAN)
94 H-SERIES

TITLE: WIRING INSTL-BODY	
30 NET SCALE DRAWING	REV 1.0
SHEET 15 OF 17	112620



- 5) WITH TV.
- 4) LOCATE TO RETAIN CABLE BUT NOT RESTRICT TRAVEL OF ANTENNA.
- 3) ADD RUBBER BUMPER TO ROOF UNDER EACH END OF ANTENNA IN DOWN POSITION WHICH MAY IN CONTACT WITH ROOF.
- 2) SEE DRAWING 76319-01-000 FOR ADDITIONAL INFORMATION.
- 1) USE WITH TV ANTENNA.



VIEW Z-Z

AIR CONDITIONER
 93308-01-CHT
 93306-02-CHT
 (240 VOLT)
 CEILING ASM
 93307-01-000
 SPRING A/C
 102289-01-000 (4)

LAMP-CLEARANCE AMBER
 113709-01-000 (5)
 SCREW
 G11-08-12B (10)

LAMP-CLEARANCE, RED
 102520-02-000 (5)
 GASKET
 102541-01-000 (5)
 SCREW
 G39-08-16T (10)
 SEAL
 102540-01-000 (10)
 BULB
 26196-01-000 (5)

WIRE ASM-BACKWALL
 112688-01-000
 112688-02-000

WIRE ASM-LEFT, FRONT

GROMMET
 23942-01-000
 SEAL

GROMMET
 71015-22-000
 SEAL

TO WASHER PUMP

TO WIRE ASM-LICENSE PLATE LAMP

CONNECTOR-SOCKET, TRAILER
 SCREW
 101618-01-000 (2)

TO WIPER MOTOR

GROMMET
 23942-01-000
 SEAL

REFLECTOR-RED
 106646-02-000 (2)

LAMP ASM
 112126-01-000 (RH)
 112126-02-000 (LH)
 SOCKET-LAMP
 112709-01-000 (2)
 112709-02-000 (2)
 112709-03-000 (2)
 BULB
 112707-01-000 (4)
 112708-01-000 (2)
 BRACKET ASM-TAIL LAMP
 113778-03-000 (2)
 SCREW
 G11-10-10B (4)

LOCATE REFLECTORS
 AS LOW AS POSSIBLE
 AND OUTBOARD WITHOUT
 GETTING INTO RADIUS
 OF BACK CAP BOTH SIDES

VIEW AA-AA

EXTERIOR LIGHTING
 94 H-SERIES

TITLE	WIRING INSTL-BODY
30 NET SCALE DRAWING	REV 1
SHEET 17 OF 17	112620

- 7 WITH JAPAN EXPORT PACKAGE DELETE ALL CLEARANCE LAMPS.
 - 6 WITH JAPAN EXPORT PACKAGE.
 - 5 WITH EXPORT ROOF AIR OPTION.
 - 4 WITH EUROPEAN EXPORT OPTION DELETE CENTER THREE LAMPS.
 - 3 CONNECT WIRE HX (PUR) TO RED WIRE AND WIRE MS (GRN) TO WHT WIRE.
 - 2 LOCATE ON CENTER OF HOLE IN CAP ASM-REAR.
1. CONNECTOR-PLUG, TRAILER 113589-01-000 TO BE SUPPLIED LOOSE IN COACH WITH TRAILER TOW PACKAGE.