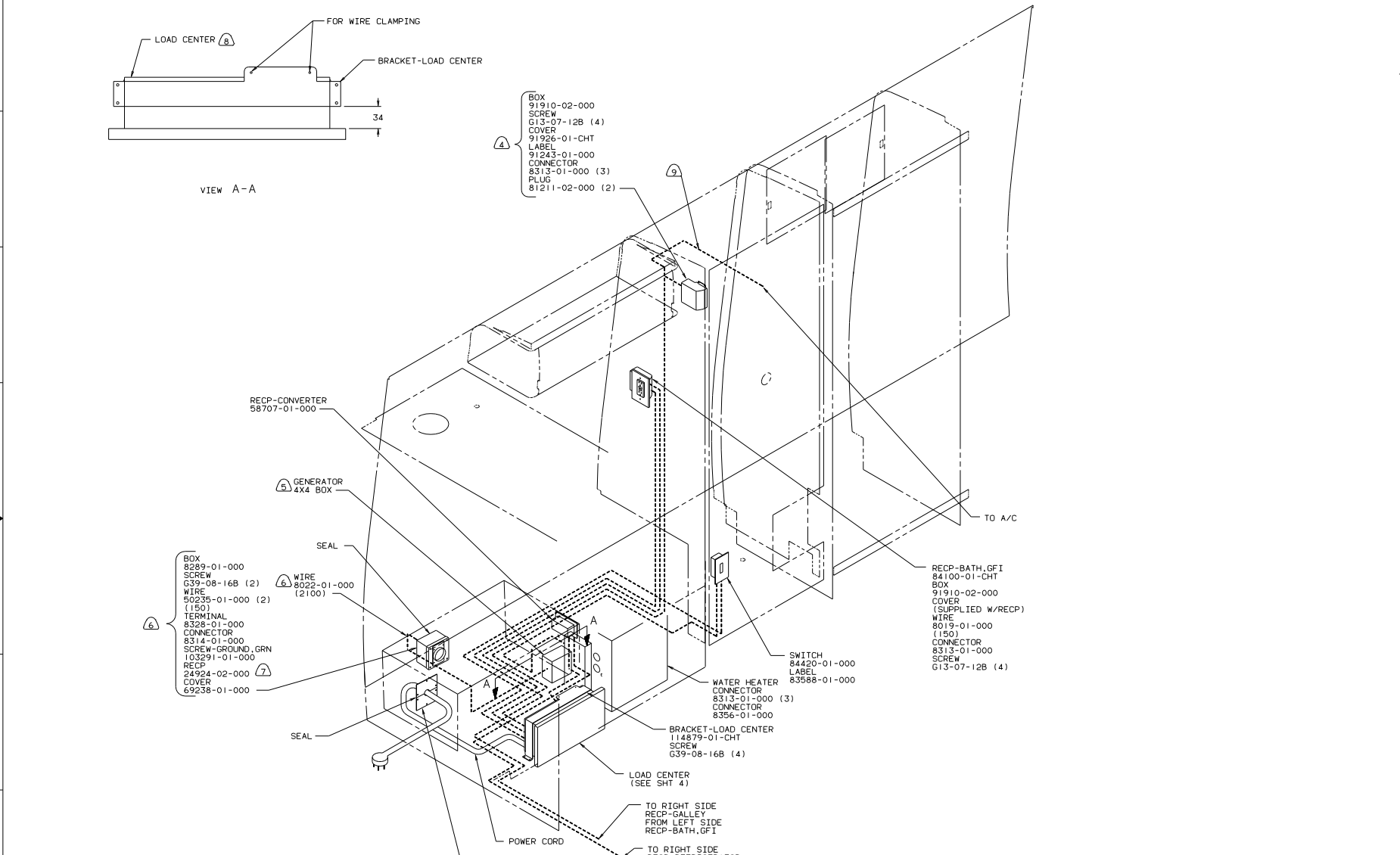


VIEW A-A

- BOX 91910-02-000
- SCREW G13-07-12B (4)
- COVER 91926-01-CHT
- LABEL 91243-01-000
- CONNECTOR 8313-01-000 (3)
- PLUG 81211-02-000 (2)



- BOX 8289-01-000
- SCREW G39-08-16B (2)
- WIRE 50235-01-000 (2)
- TERMINAL 8328-01-000
- CONNECTOR 8314-01-000
- SCREW-GROUND, GRN 103291-01-000
- RECP 24924-02-000
- COVER 69238-01-000

- RECP-BATH, GFI 84100-01-CHT
- BOX 91910-02-000
- COVER (SUPPLIED W/RECP)
- WIRE 8019-01-000 (150)
- CONNECTOR 8313-01-000
- SCREW G13-07-12B (4)

- SWITCH 84420-01-000
- LABEL 83588-01-000
- WATER HEATER CONNECTOR 8313-01-000 (3)
- CONNECTOR 8356-01-000

- BRACKET-LOAD CENTER 114879-01-CHT
- SCREW G39-08-16B (4)

- LOAD CENTER (SEE SHT 4)

- PLATE-POWER CORD 109081-02-000 (2)
- SCREW G67-10-08U (6)
- CONNECTOR 8355-01-000

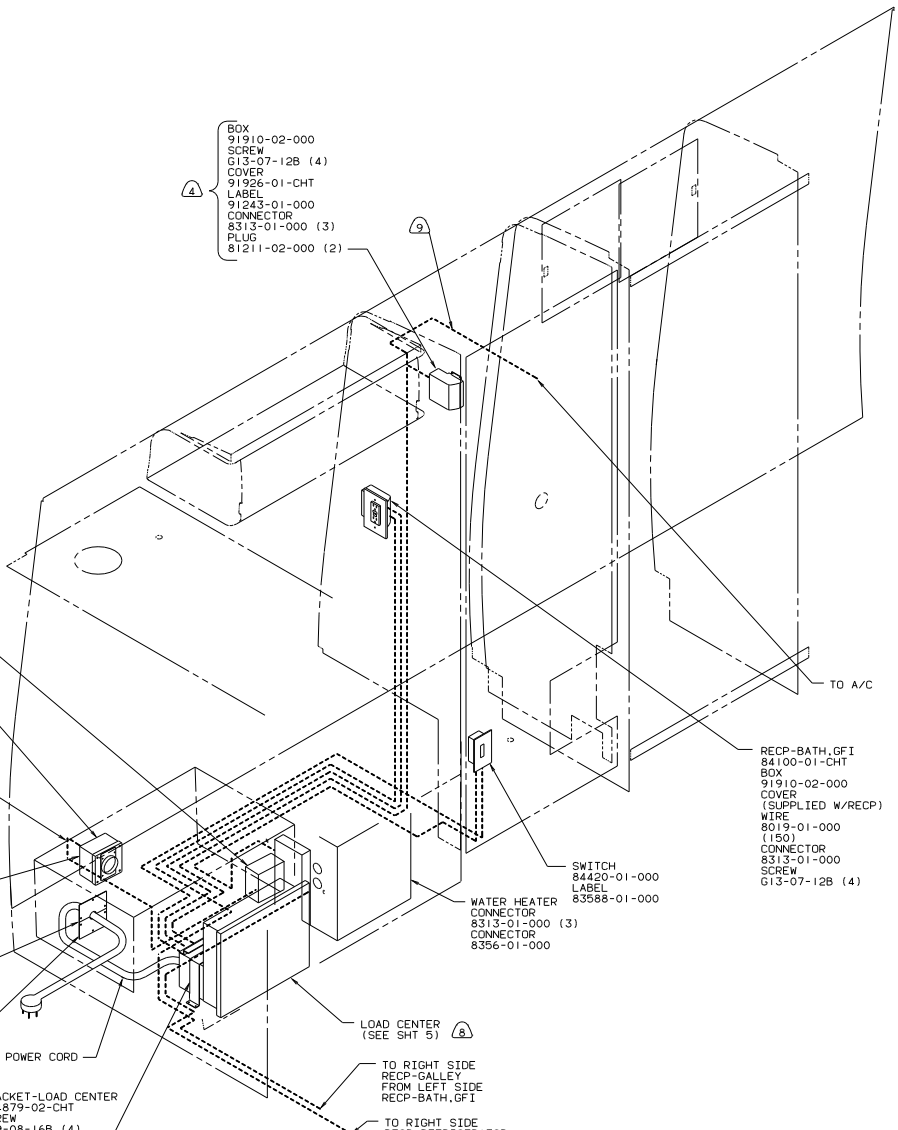
- ⑨ WITH FACTORY A/C ONLY.
- ⑧ LOAD CENTER IS LOCATED BY DINETTE SEAT FACE.
- ⑦ INSTALL RECP WITH GROUND TOWARD BOTTOM OF VEHICLE.
- ⑥ USE WITH GENERATOR ONLY.
- ⑤ SEE GENERATOR INSTL FOR ADDITIONAL INFORMATION.
- ④ USE WITHOUT FACTORY A/C.

- 3. ALL GROUND WIRES TO BE COVERED WITH TUBING 8041-02-000.
- 2. ALL WIRES ARE TO BE CLAMPED WITH CLAMP 10497-05-000 WITHIN 200 OF OUTLET BOXES. USE SCREW G67-10-12B.
- 1. ALL WIRES TO BE CLAMPED WITH CLAMP 10495-01-000 OR CLIP 80734-01-000 EVERY 600. USE SCREW G67-10-12B UNLESS OTHERWISE SPECIFIED.

NOTES:

110V LEFT (US)

WINNEBAGO		96 221RD
QTY IN	UNSPECIFIED TOLERANCES ARE:	MATERIAL:
CHRP	WELD DIM 1/16"	
FIN	ONE-PLATE 1/8"	
FIN	TWO-PLATE 1/8"	
FIN	ANGLE	
CON	TRUSS ANGLE	
CON	PROJECTION	
LAND	TITLE: WIRING INSTL-BODY	
DIA #	SCALE: NONE	DO NOT SCALE DRAWING
ALL DIMENSIONS ARE IN MILLIMETERS	SHEET 1 OF 17	119907



- BOX 91910-02-000
- SCREW G13-07-12B (4)
- COVER 91926-01-CHT
- LABEL 91243-01-000
- CONNECTOR 8313-01-000 (3)
- PLUG 81211-02-000 (2)

- BOX 8289-01-000
- SCREW G39-08-16B (2)
- WIRE 50235-01-000 (2)
- TERMINAL (150)
- CONNECTOR 8314-01-000
- SCREW-GROUND, GRN 103291-01-000
- RECP 24924-02-000
- COVER 69238-01-000

- RECP-BATH, GFI 84100-01-CHT
- BOX 91910-02-000
- COVER (SUPPLIED W/RECP)
- WIRE 8019-01-000 (150)
- CONNECTOR 8313-01-000
- SCREW G13-07-12B (4)

- SWITCH 84420-01-000
- LABEL 83588-01-000
- WATER HEATER CONNECTOR 8313-01-000 (3)
- CONNECTOR 8356-01-000

- PLATE-POWER CORD 109081-02-000 (2)
- SCREW G67-10-08U (6)
- CONNECTOR 8355-01-000

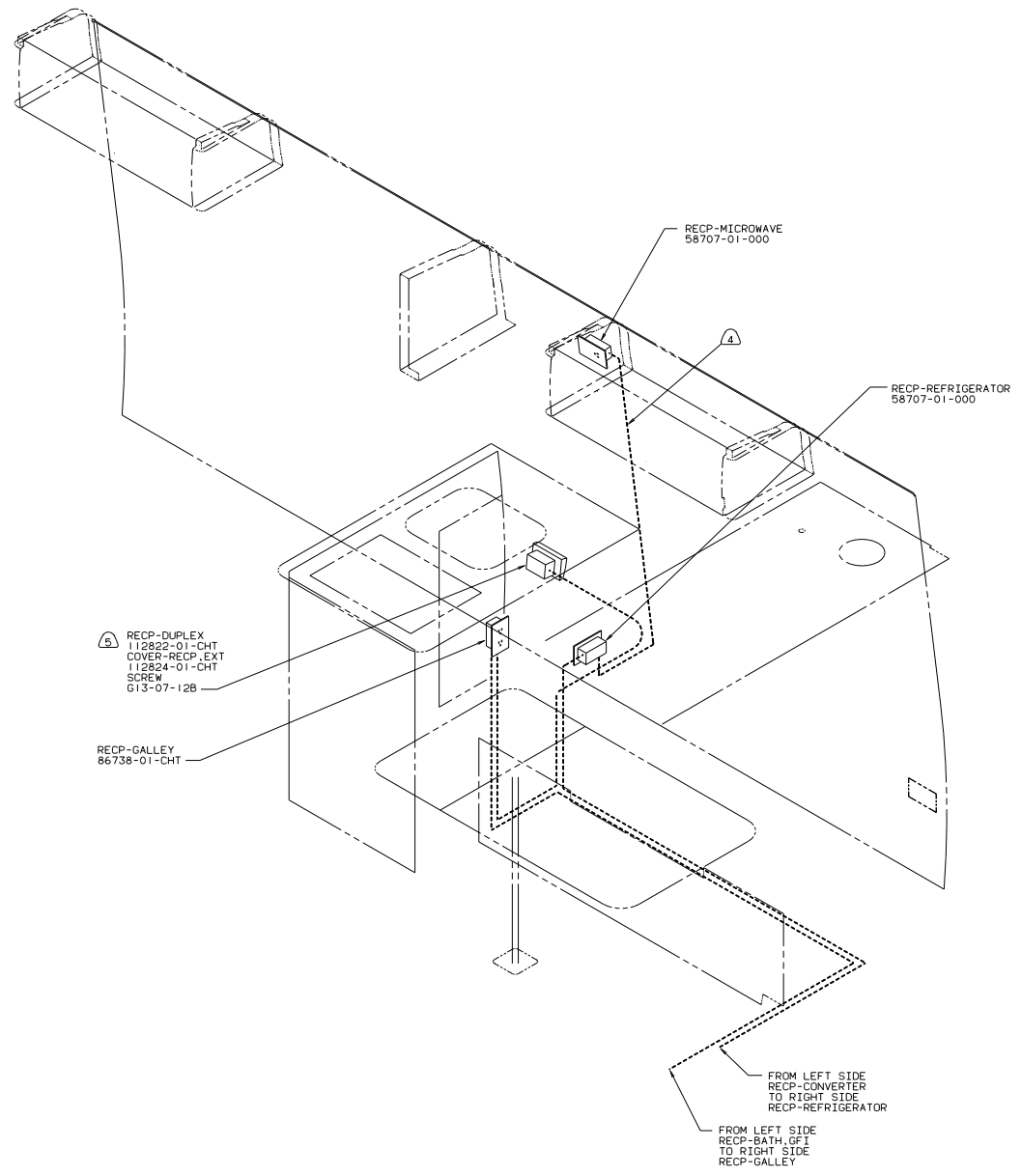
- BRACKET-LOAD CENTER 114879-02-CHT
- SCREW G39-08-16B (4)

- 9 WITH FACTORY A/C ONLY.
 - 8 LOAD CENTER IS LOCATED BY DINETTE SEAT FACE.
 - 7 INSTALL RECP WITH GROUND TOWARD BOTTOM OF VEHICLE.
 - 6 USE WITH GENERATOR ONLY.
 - 5 SEE GENERATOR INSTL FOR ADDITIONAL INFORMATION.
 - 4 USE WITHOUT FACTORY A/C.
3. ALL GROUND WIRES TO BE COVERED WITH TUBING 8041-02-000.
 2. ALL WIRES ARE TO BE CLAMPED WITH CLAMP 10497-05-000 WITHIN 200 OF OUTLET BOXES. USE SCREW G67-10-12B.
 1. ALL WIRES TO BE CLAMPED WITH CLAMP 10495-01-000 OR CLIP 80734-01-000 EVERY 600. USE SCREW G67-10-12B UNLESS OTHERWISE SPECIFIED.

NOTES:

110V LEFT
 JAPAN EXPORT PACKAGE
 96 221RD

TITLE: WIRING INSTL-BODY	
30 NET SCALE DRAWING	FILE NO
SHEET 2 OF 17	119907

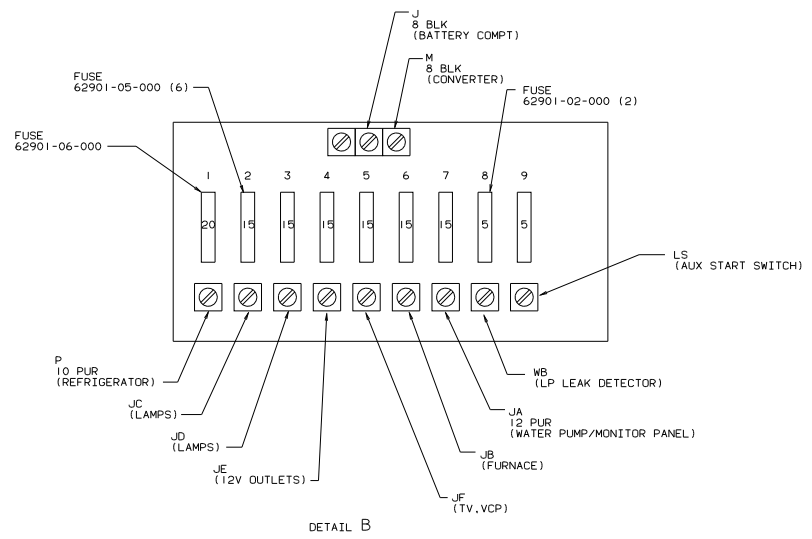
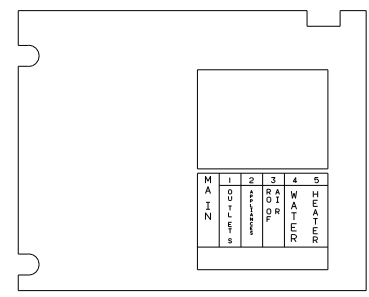
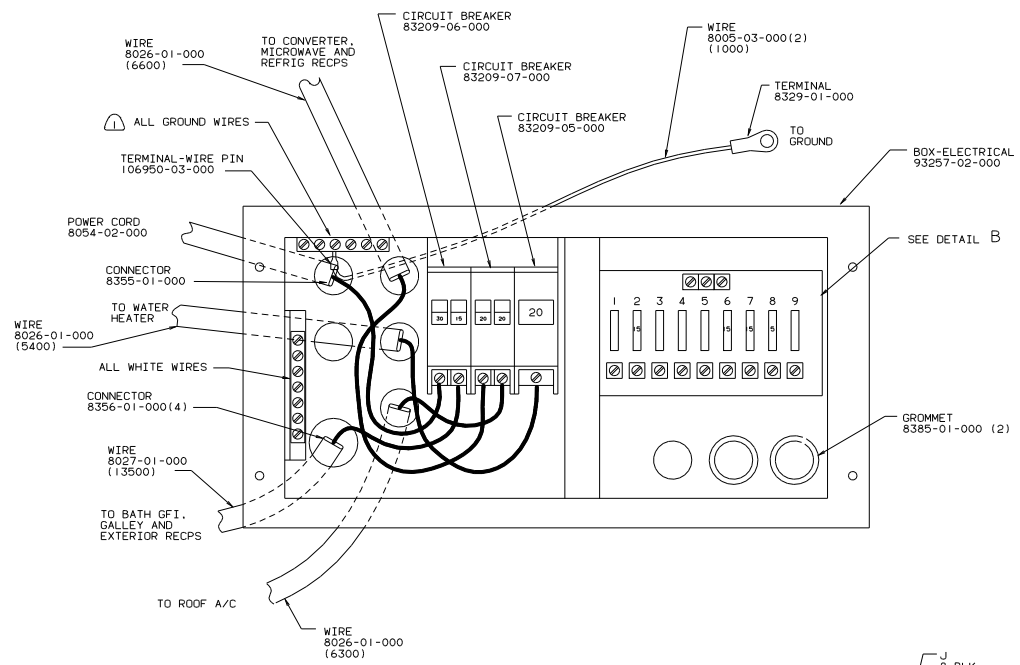


- 5 SEAL BACK SIDE OF RECIP FACE.
- 4 WIRE ROUTED THRU SIDEWALL.
- 3. ALL GROUND WIRES TO BE COVERED WITH TUBING 8041-02-000.
- 2. ALL WIRES ARE TO BE CLAMPED WITH CLAMP 10497-05-000 WITHIN 200 OF OUTLET BOXES,USE SCREW G67-10-12B.
- 1. ALL WIRES TO BE CLAMPED WITH CLAMP 10495-01-000 OR CLIP 80734-01-000 EVERY 600,USE SCREW G67-10-12B UNLESS OTHERWISE SPECIFIED.

NOTES:

110V RIGHT (US & JAPAN EXPORT PACKAGE)
96 221RD

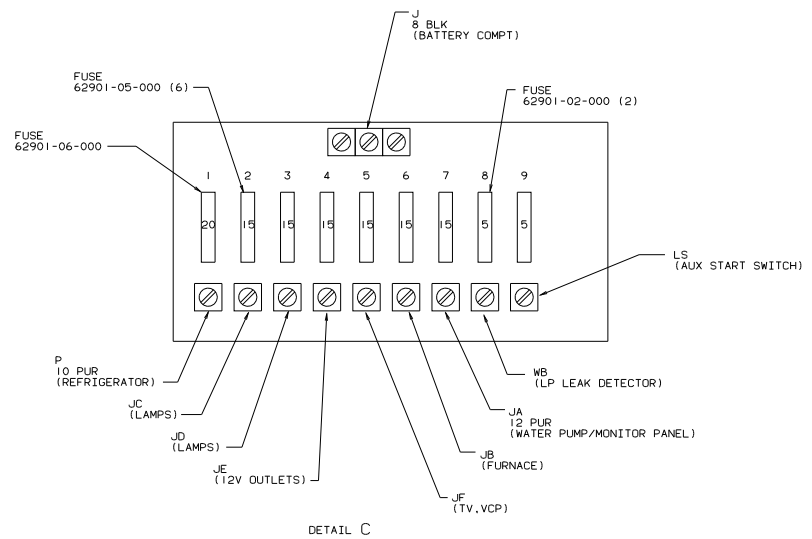
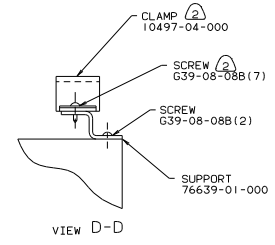
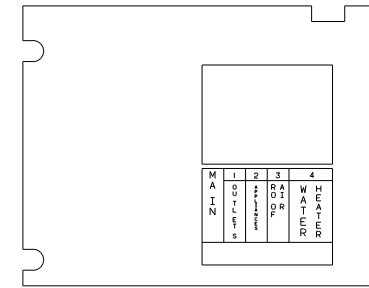
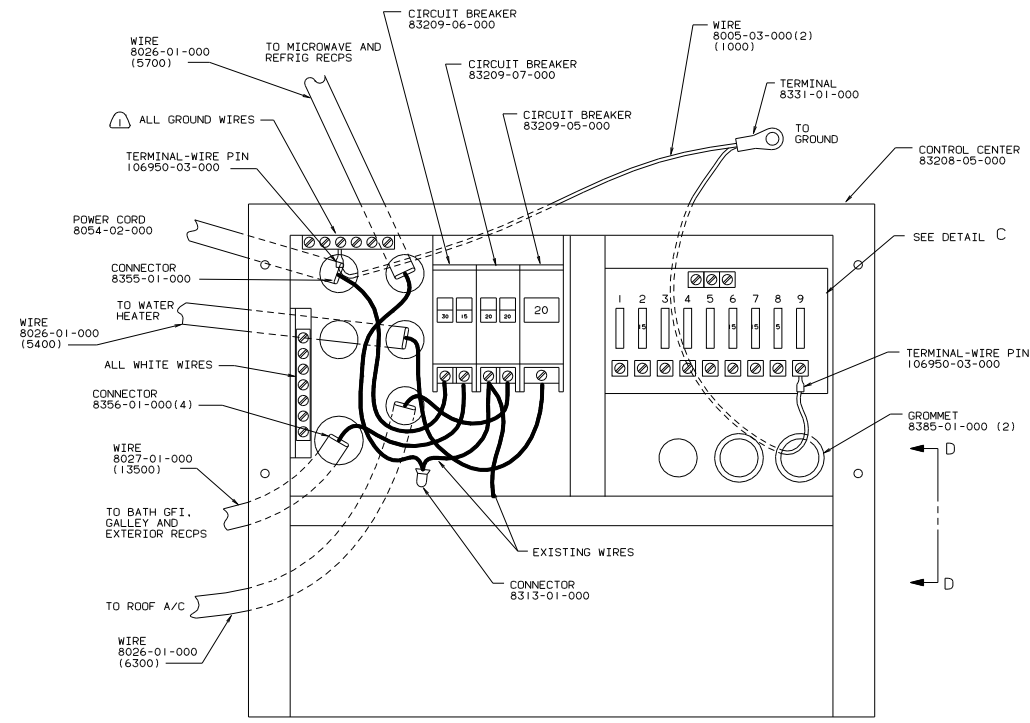
TITLE: WIRING INSTL-BODY	
30 NET SCALE DRAWING	REV 1
SHEET 3 of 17	119907



⚠ ALL GROUND WIRES TO BE COVERED WITH TUBING 8041-02-000.

LOAD CENTER (US)
96 221RD

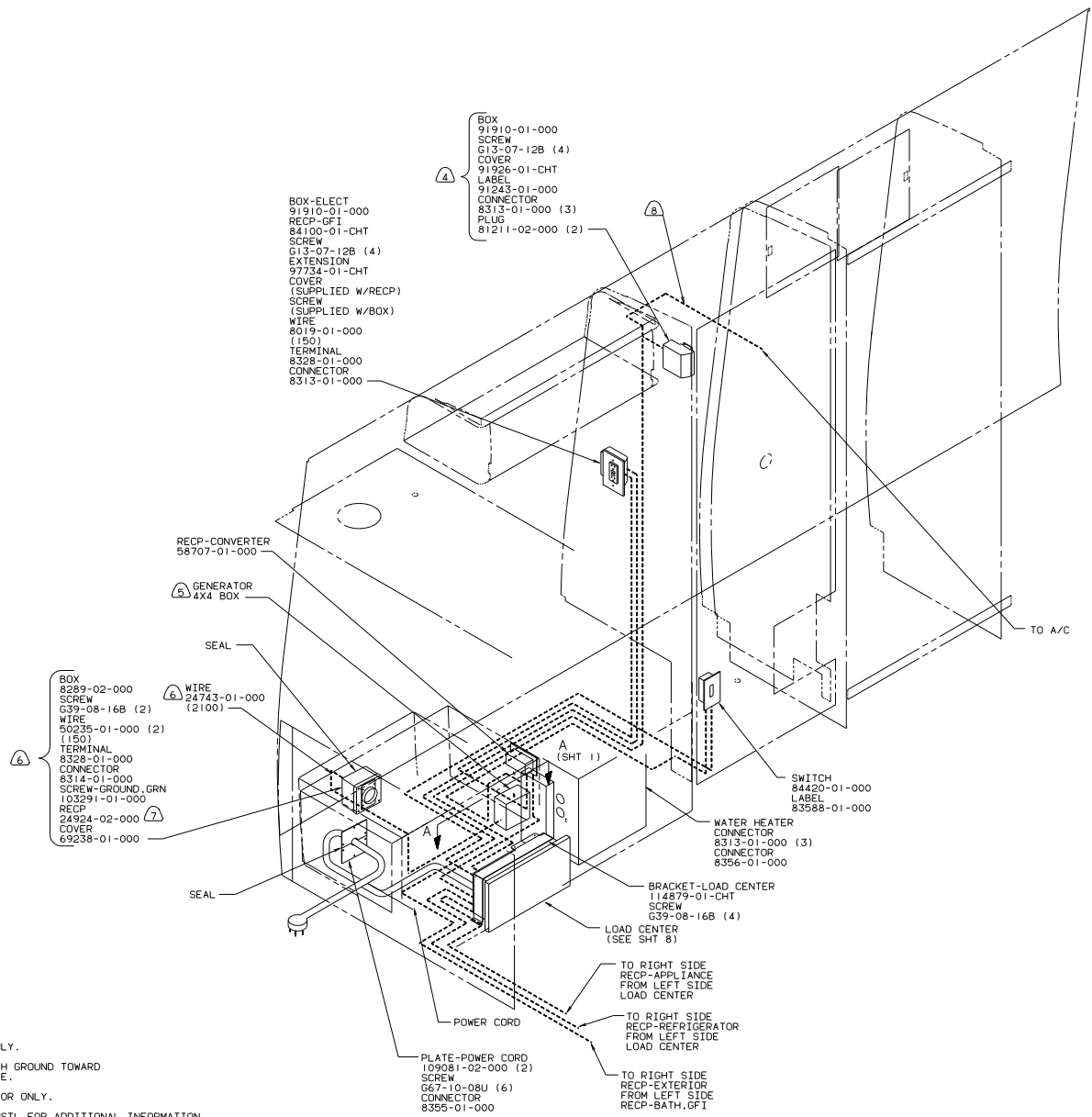
TITLE: WIRING INSTL-BODY	
30 NET SCALE DRAWING	REV 1.0
SHEET 4 OF 17	FIG NO 119907



FASTEN ALL WIRES TO SUPPORT. USE ONE SCREW PER CLAMP.
 ALL GROUND WIRES TO BE COVERED WITH TUBING 8041-02-000.

LOAD CENTER
 (JAPAN EXPORT PACKAGE)
 96 221RD

TITLE: WIRING INSTL-BODY	
30 NET SCALE DRAWING	REV 1
SHEET 5 OF 17	FIG NO 119907



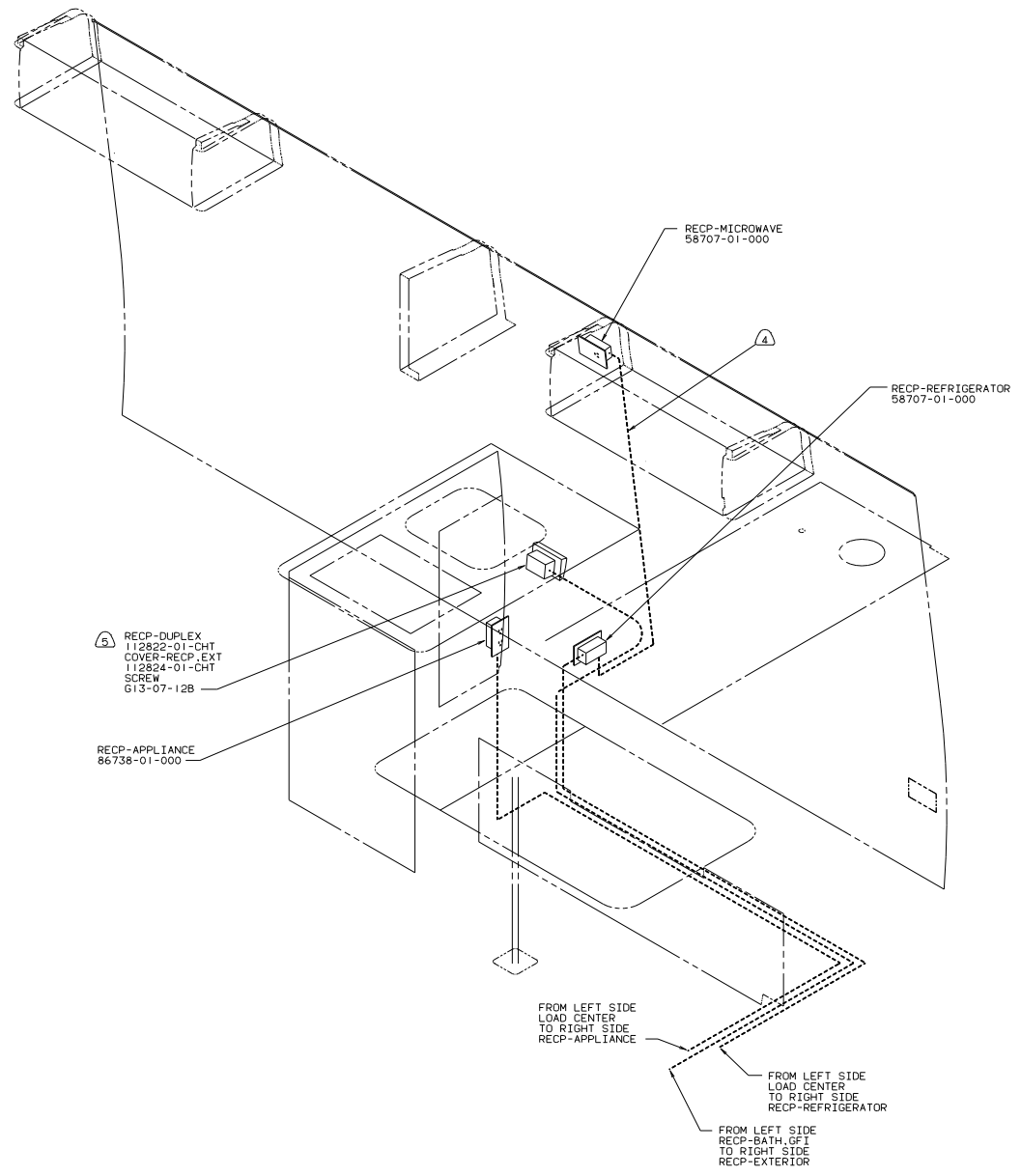
- BOX 91910-01-000
 - SCREW 613-07-12B (4)
 - COVER 91926-01-CHT
 - LABEL 91243-01-000
 - CONNECTOR 8313-01-000 (3)
 - PLUG 81211-02-000 (2)
- BOX-ELECT 91910-01-000
 - RECP-GFI 84100-01-CHT
 - SCREW 613-07-12B (4)
 - EXTENSION 97734-01-CHT
 - COVER (SUPPLIED W/RECP)
 - SCREW (SUPPLIED W/BOX)
 - WIRE 8019-01-000 (150)
 - TERMINAL 8328-01-000
 - CONNECTOR 8313-01-000

- BOX 8289-02-000
- SCREW 639-08-16B (2)
- WIRE 50235-01-000 (2) (1150)
- TERMINAL 8328-01-000
- CONNECTOR 8314-01-000
- SCREW-GROUND,GRN 103291-01-000
- RECP 24924-02-000
- COVER 69238-01-000

- 8) W/FACTORY A/C ONLY.
 - 7) INSTALL RECP WITH GROUND TOWARD BOTTOM OF VEHICLE.
 - 6) USE WITH GENERATOR ONLY.
 - 5) SEE GENERATOR INSTL FOR ADDITIONAL INFORMATION.
 - 4) USE WITHOUT FACTORY A/C.
- ALL GROUND WIRES TO BE COVERED WITH TUBING 8011-02-000.
 - ALL WIRES ARE TO BE CLAMPED WITH CLAMP 10497-05-000 WITHIN 200 OF OUTLET BOXES. USE SCREW G67-10-12B.
 - ALL WIRES TO BE CLAMPED WITH CLAMP 10495-01-000 OR CLIP 80734-01-000 EVERY 600. USE SCREW G67-10-12B UNLESS OTHERWISE SPECIFIED.

110V LEFT (CAN)
96 221RD

TITLE: WIRING INSTL-BODY	
30 NET SCALE DRAWING	FILE NO
SHEET 6 OF 17	119907

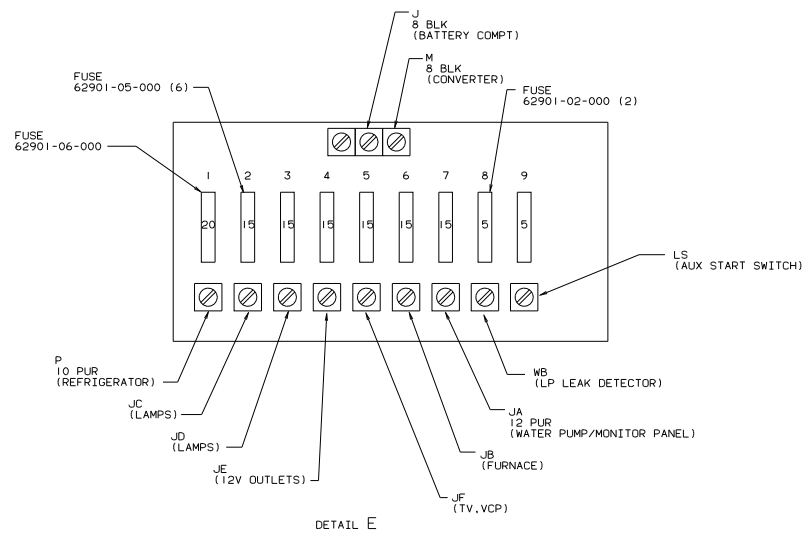
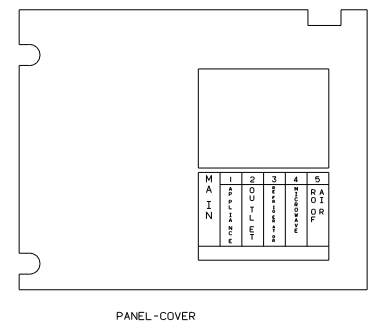
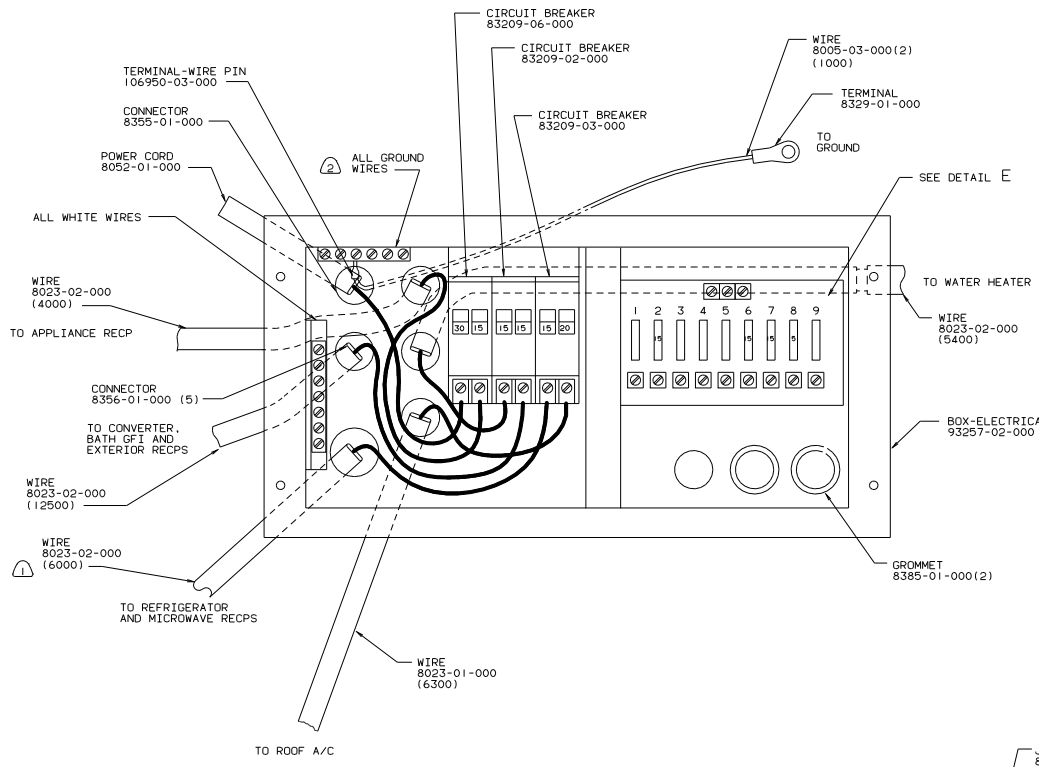


- 5 SEAL BACK SIDE OF RECP FACE.
- 4 WIRE ROUTED IN SIDEWALL.
- 3. ALL GROUND WIRES TO BE COVERED WITH TUBING 8011-02-000.
- 2. ALL WIRES ARE TO BE CLAMPED WITH CLAMP 10497-05-000 WITHIN 200 OF OUTLET BOXES. USE SCREW G67-10-12B.
- 1. ALL WIRES TO BE CLAMPED WITH CLAMP 10495-01-000 OR CLIP 80734-01-000 EVERY 600. USE SCREW G67-10-12B UNLESS OTHERWISE SPECIFIED.

NOTES:

110V RIGHT (CAN)
96 221RD

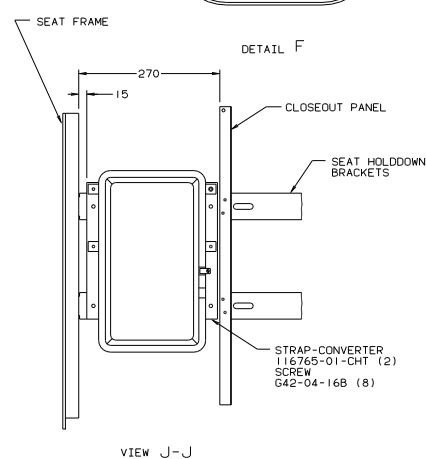
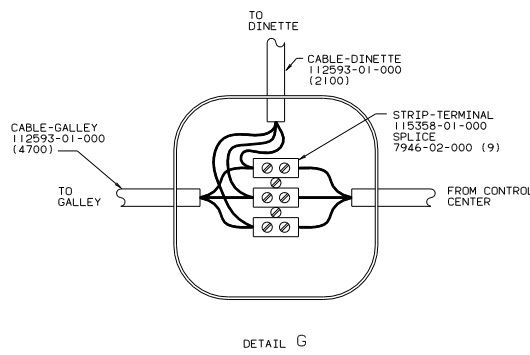
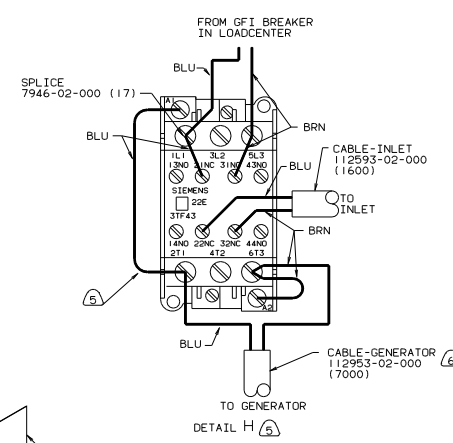
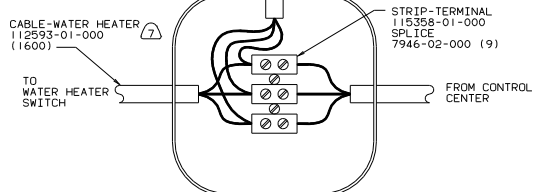
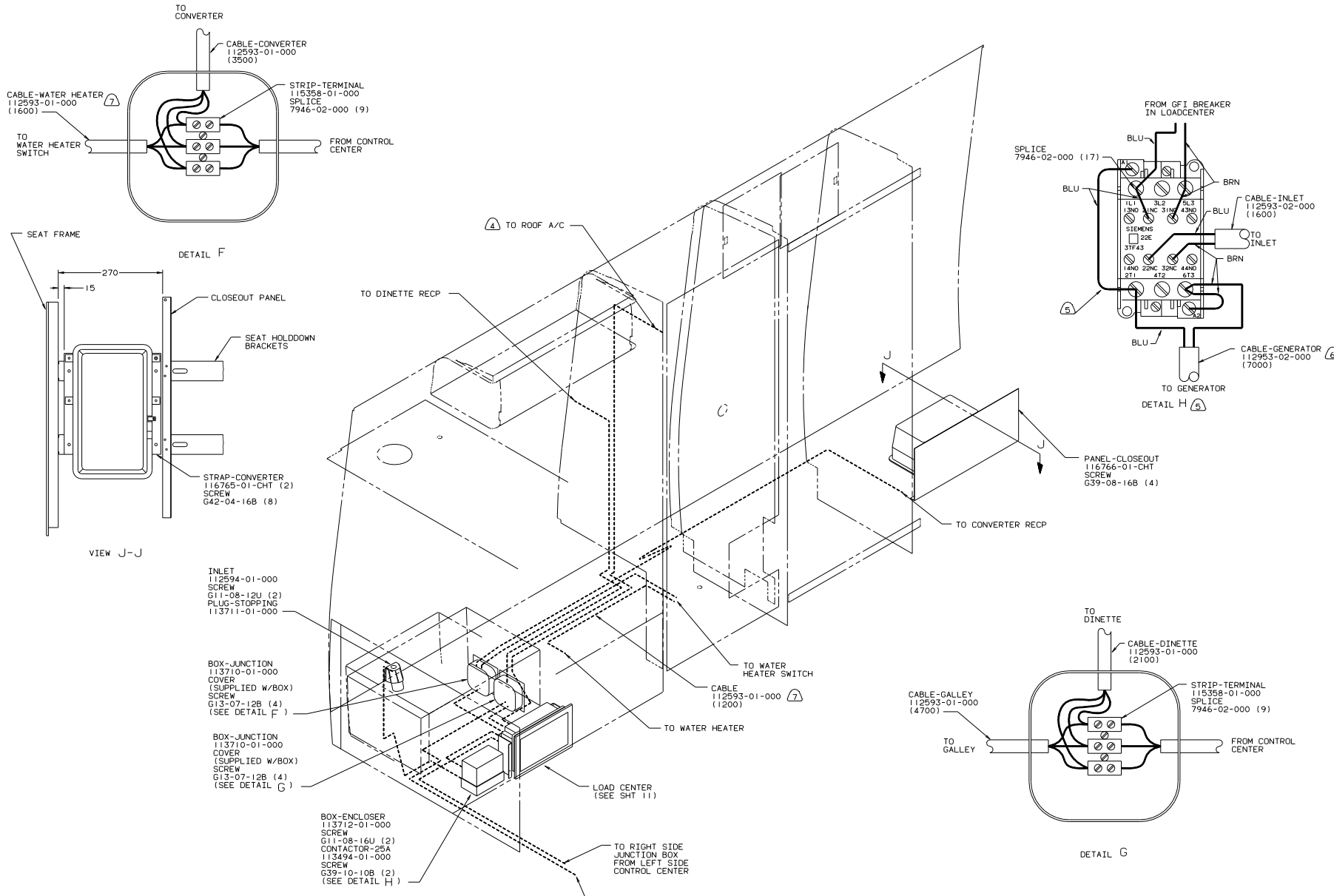
TITLE: WIRING INSTL-BODY	
30 NET SCALE DRAWING	FILE NO
SHEET 7 of 17	119907



2 ALL GROUND WIRES TO BE COVERED WITH TUBING 8041-02-000.
 1 USE WITH MICROWAVE.

LOAD CENTER (CAN)
 96 22IRD

TITLE: WIRING INSTL-BODY	
30 NET SCALE DRAWING	REV 1.1
SHEET 8 OF 17	DATE 119907



INLET
112594-01-000
SCREW
G11-08-12U (2)
PLUG-STOPPING
113711-01-000

BOX-JUNCTION
113710-01-000
COVER
(SUPPLIED W/BOX)
SCREW
G13-07-12B (4)
(SEE DETAIL F)

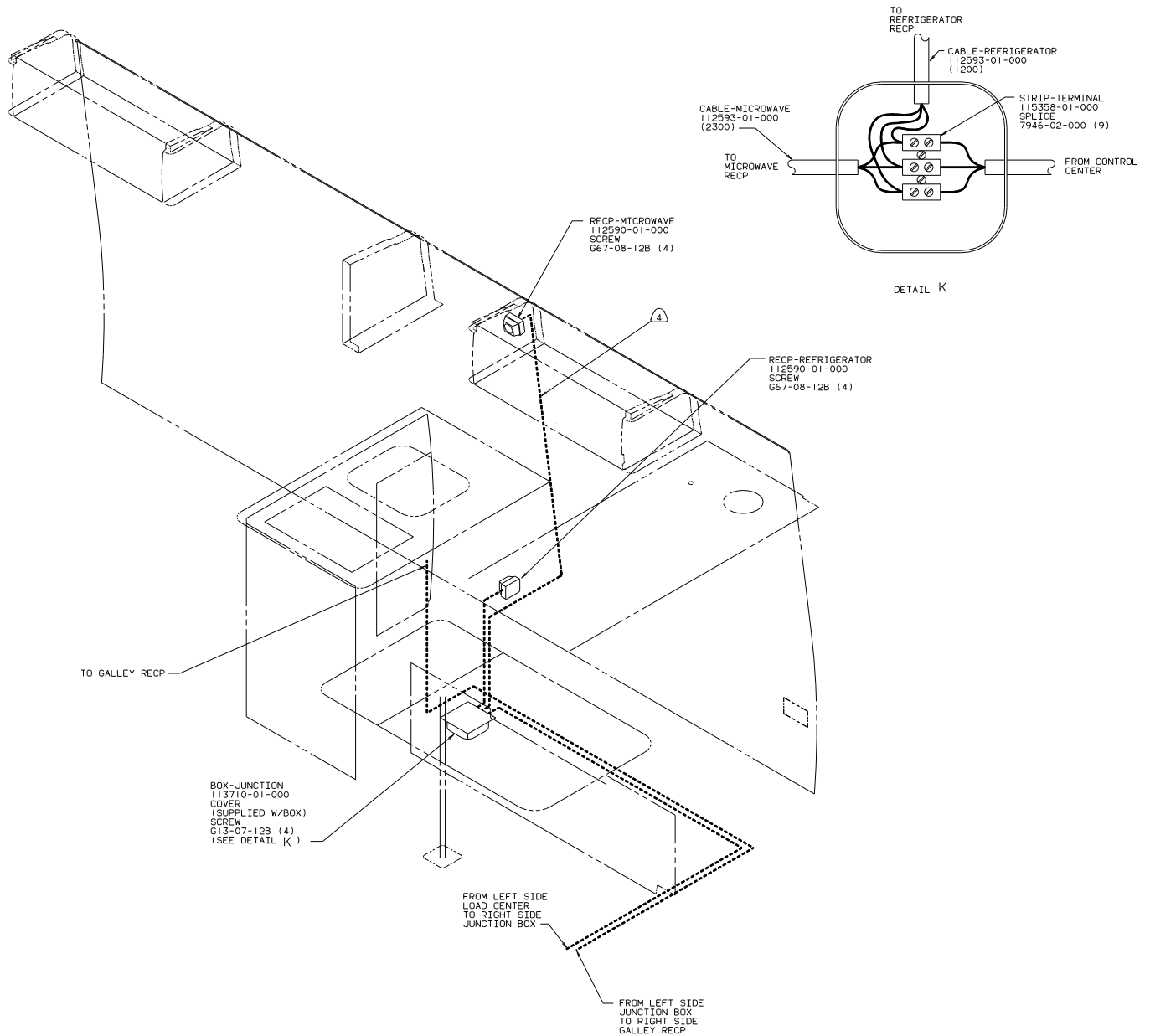
BOX-JUNCTION
113710-01-000
COVER
(SUPPLIED W/BOX)
SCREW
G13-07-12B (4)
(SEE DETAIL G)

BOX-ENCLOSURE
113712-01-000
SCREW
G11-08-16U (2)
CONTACTOR-25A
113494-01-000
SCREW
G39-10-10B (2)
(SEE DETAIL H)

- 1. ALL WIRES TO BE CLAMPED WITH CLAMP 10495-01-000 OR CLIP 80734-01-000 EVERY 600. USE SCREW G67-10-12B UNLESS OTHERWISE SPECIFIED.
 - 2. ALL WIRES ARE TO BE CLAMPED WITH CLAMP 10497-05-000 WITHIN 200 OF OUTLET BOXES. USE SCREW G67-10-12B.
 - 3. ALL GROUND WIRES TO BE COVERED WITH TUBING 8011-02-000.
- NOTES:

220V LEFT
(EUROPEAN ELECTRICAL PREP)
96 221RD

TITLE: WIRING INSTL-BODY	
30 NET SCALE DRAWING	FIG 1E
SHEET 9 OF 17	119907

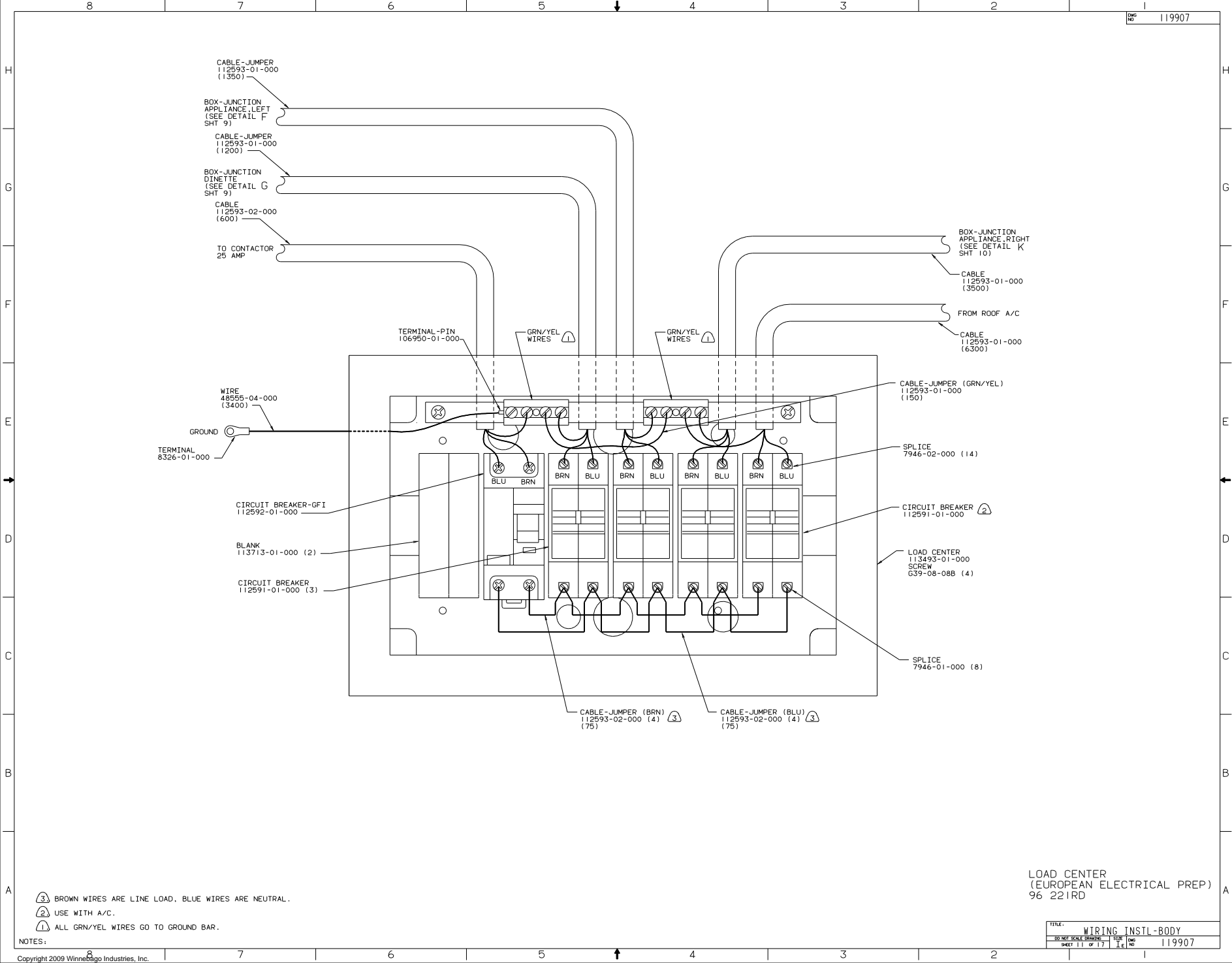


- ④ WIRE ROUTED IN SIDEWALL.
- 3. ALL GROUND WIRES TO BE COVERED WITH TUBING 8011-02-000.
- 2. ALL WIRES ARE TO BE CLAMPED WITH CLAMP 10497-05-000 WITHIN 200 OF OUTLET BOXES. USE SCREW G67-10-12B.
- 1. ALL WIRES TO BE CLAMPED WITH CLAMP 10495-01-000 OR CLIP 80734-01-000 EVERY 600. USE SCREW G67-10-12B UNLESS OTHERWISE SPECIFIED.

NOTES:

220V RIGHT
(EUROPEAN ELECTRICAL PREP)
96 221RD

TITLE: WIRING INSTL-BODY	
30 NET SCALE DRAWING	FILE NO
SHEET 10 OF 17	119907



CABLE-JUMPER
112593-01-000
(1350)

BOX-JUNCTION
APPLIANCE, LEFT
(SEE DETAIL F
SHT 9)

CABLE-JUMPER
112593-01-000
(1200)

BOX-JUNCTION
DINETTE
(SEE DETAIL G
SHT 9)

CABLE
112593-02-000
(600)

TO CONTACTOR
25 AMP

BOX-JUNCTION
APPLIANCE, RIGHT
(SEE DETAIL K
SHT 10)

CABLE
112593-01-000
(3500)

FROM ROOF A/C

CABLE
112593-01-000
(6300)

WIRE
48555-04-000
(3400)

GROUND

TERMINAL
8326-01-000

CIRCUIT BREAKER-GFI
112592-01-000

BLANK
113713-01-000 (2)

CIRCUIT BREAKER
112591-01-000 (3)

CABLE-JUMPER (GRN/YEL)
112593-01-000
(150)

SPLICE
7946-02-000 (14)

CIRCUIT BREAKER
112591-01-000

LOAD CENTER
113493-01-000
SCREW
639-08-08B (4)

SPLICE
7946-01-000 (8)

CABLE-JUMPER (BRN)
112593-02-000 (4) (3)

CABLE-JUMPER (BLU)
112593-02-000 (4) (3)

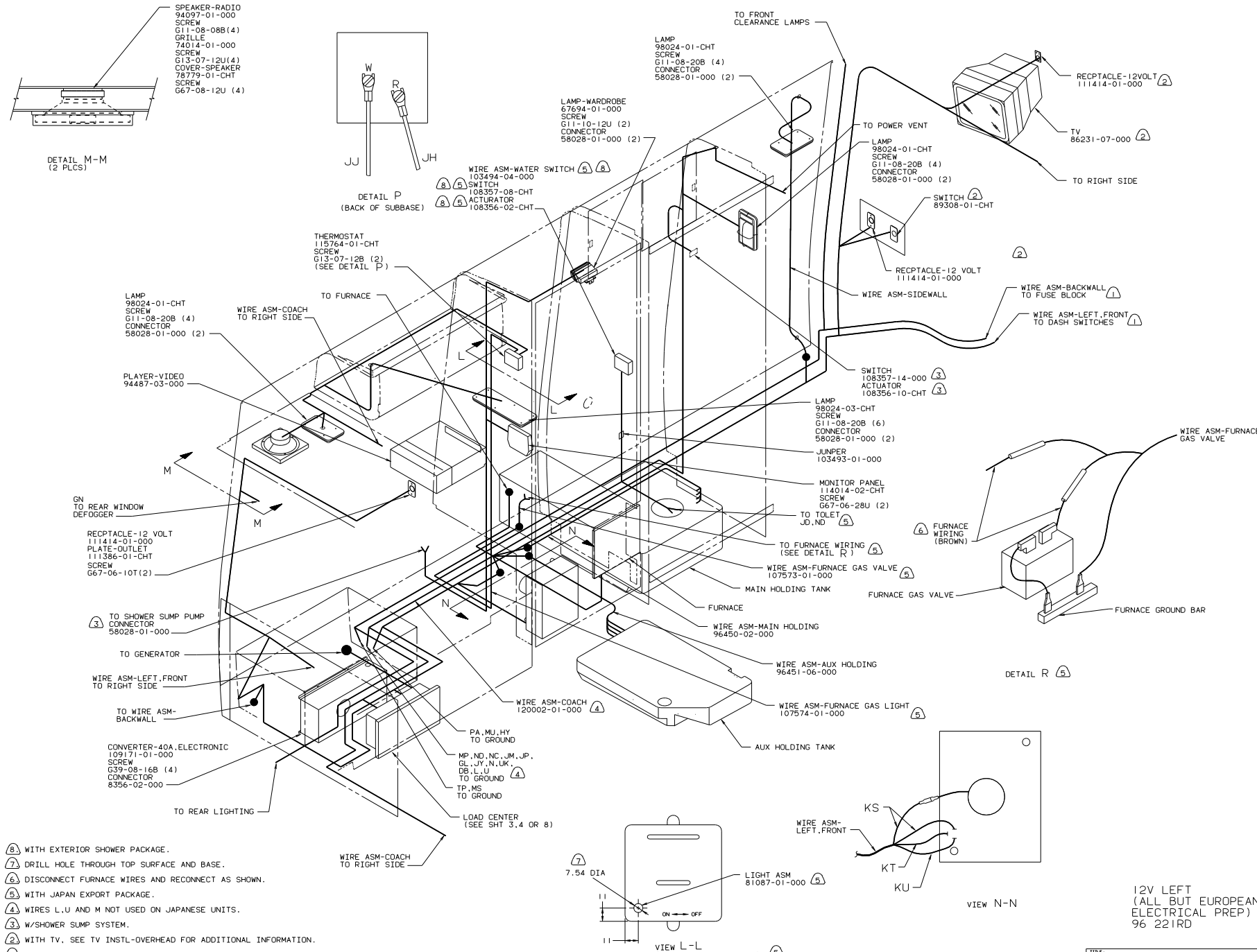
3 BROWN WIRES ARE LINE LOAD, BLUE WIRES ARE NEUTRAL.

2 USE WITH A/C.

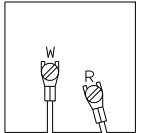
1 ALL GRN/YEL WIRES GO TO GROUND BAR.

LOAD CENTER
(EUROPEAN ELECTRICAL PREP)
96 221RD

TITLE: WIRING INSTL-BODY	
30 NET SCALE DRAWING	REV 1
SHEET 11 of 17	119907



SPEAKER-RADIO
94097-01-000
SCREW
G11-08-08B (4)
GRILLE
74014-01-000
SCREW
G13-07-12U (4)
COVER-SPEAKER
78779-01-CHT
SCREW
G67-08-12U (4)

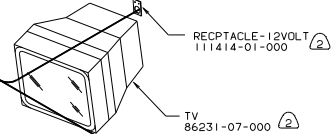


DETAIL M-M (2 PLCS)

DETAIL P (BACK OF SUBBASE)

WIRE ASM-WATER SWITCH (A) (B)
SWITCH 108357-08-CHT
ACTUATOR 108356-02-CHT

LAMP 98024-01-CHT
SCREW
G11-08-20B (4)
CONNECTOR
58028-01-000 (2)



LAMP 98024-01-CHT
SCREW
G11-08-20B (4)
CONNECTOR
58028-01-000 (2)

THERMOSTAT
115764-01-CHT
SCREW
G13-07-12B (2)
(SEE DETAIL P)

LAMP 98024-01-CHT
SCREW
G11-08-20B (4)
CONNECTOR
58028-01-000 (2)

SWITCH 89308-01-CHT

PLAYER-VIDEO
94487-03-000

SWITCH 108357-14-000 (3)
ACTUATOR 108356-10-CHT (3)

LAMP 98024-03-CHT
SCREW
G11-08-20B (6)
CONNECTOR
58028-01-000 (2)

MONITOR PANEL
114014-02-CHT
SCREW
G67-06-28U (2)

RECPTACLE-12 VOLT
111414-01-000
PLATE-OUTLET
111386-01-CHT
SCREW
G67-06-10T (2)

WIRE ASM-FURNACE GAS VALVE
107573-01-000

FURNACE GAS VALVE

TO SHOWER SUMP PUMP
CONNECTOR
58028-01-000

WIRE ASM-AUX HOLDING
96451-06-000

AUX HOLDING TANK

TO GENERATOR

WIRE ASM-LEFT-FRONT
TO RIGHT SIDE

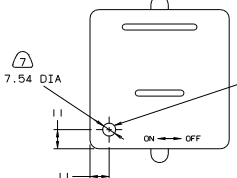
CONVERTER-40A, ELECTRONIC
109171-01-000
SCREW
G39-08-16B (4)
CONNECTOR
8356-02-000

PA, MU, HY
TO GROUND

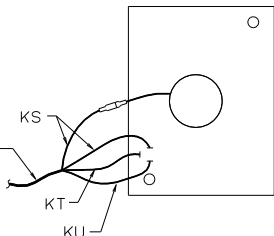
MP, ND, NC, JM, JP,
GL, JY, N, UK,
DB, L, U
TO GROUND

TP, MS
TO GROUND

LOAD CENTER
(SEE SHT 3.4 OR 8)



WIRE ASM-LEFT-FRONT

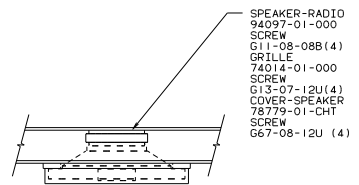


VIEW N-N

12V LEFT
(ALL BUT EUROPEAN
ELECTRICAL PREP)
96 221RD

- (8) WITH EXTERIOR SHOWER PACKAGE.
- (7) DRILL HOLE THROUGH TOP SURFACE AND BASE.
- (6) DISCONNECT FURNACE WIRES AND RECONNECT AS SHOWN.
- (5) WITH JAPAN EXPORT PACKAGE.
- (4) WIRES L, U AND M NOT USED ON JAPANESE UNITS.
- (3) W/SHOWER SUMP SYSTEM.
- (2) WITH TV. SEE TV INSTL-OVERHEAD FOR ADDITIONAL INFORMATION.
- (1) SEE DRAWING INSTL-FRONT END FOR ADDITIONAL INFORMATION.

TITLE		WIRING INSTL-BODY	
30 NET SCALE DRAWING	FIG	16	
SHEET 12 OF 17	REV	1 E	
		119907	



- WIRE ASM-JUMPER
103493-01-000
- WIRE ASM-WATER PUMP SW
103494-04-000
- SWITCH
108357-08-000
- ACTUATOR
108356-02-000

- LAMP
98024-01-CHT
SCREW
G11-08-20B (4)
CONNECTOR
58028-01-000 (2)

TO FRONT
CLEARANCE LAMPS

TO POWER VENT

TO RIGHT SIDE

- LAMP
98024-01-CHT
SCREW
G11-08-20B (4)
CONNECTOR
58028-01-000 (2)

- LAMP
98024-01-CHT
SCREW
G11-08-20B (4)
CONNECTOR
58028-01-000 (2)

TO FURNACE

TO RIGHT SIDE

- SWITCH
108357-14-000
ACTUATOR
108356-10-CHT

- LAMP
98024-03-CHT
SCREW
G11-08-20B (4)
CONNECTOR
58028-01-000 (2)

WIRE ASM-BACKWALL
TO FUSE BLOCK

WIRE ASM-LEFT, FRONT
TO DASH SWITCHES

GN
TO REAR WINDOW
DEFODGER

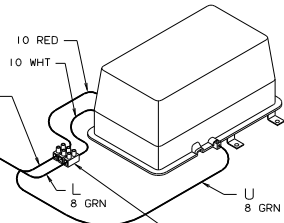
TO SHOWER SUMP PUMP
CONNECTOR
58028-01-000

MONITOR PANEL
114014-02-CHT
SCREW
G67-06-28U (2)

MAIN HOLDING TANK

FURNACE

WIRE ASM-COACH



TO GENERATOR

WIRE ASM-LEFT, FRONT
TO RIGHT SIDE

TO WIRE ASM-
BACKWALL

TO REAR LIGHTING

LABEL
92547-04-000

WIRE ASM-COACH
TO RIGHT SIDE

W (SHT 15)

X (SHT 15)

PA, MU, HY
TO GROUND

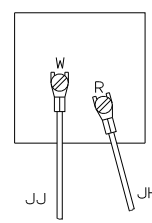
MP, ND, NC, JM, JP, GL,
JY, UK, L, N, U, DB
TO GROUND

TP, MS
TO GROUND

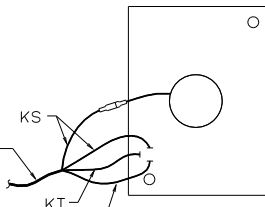
LOAD CENTER
(SEE SHT 3 OR 6)

WIRE ASM-COACH
120021-01-000

WIRE ASM-AUX HOLDING
96451-06-000



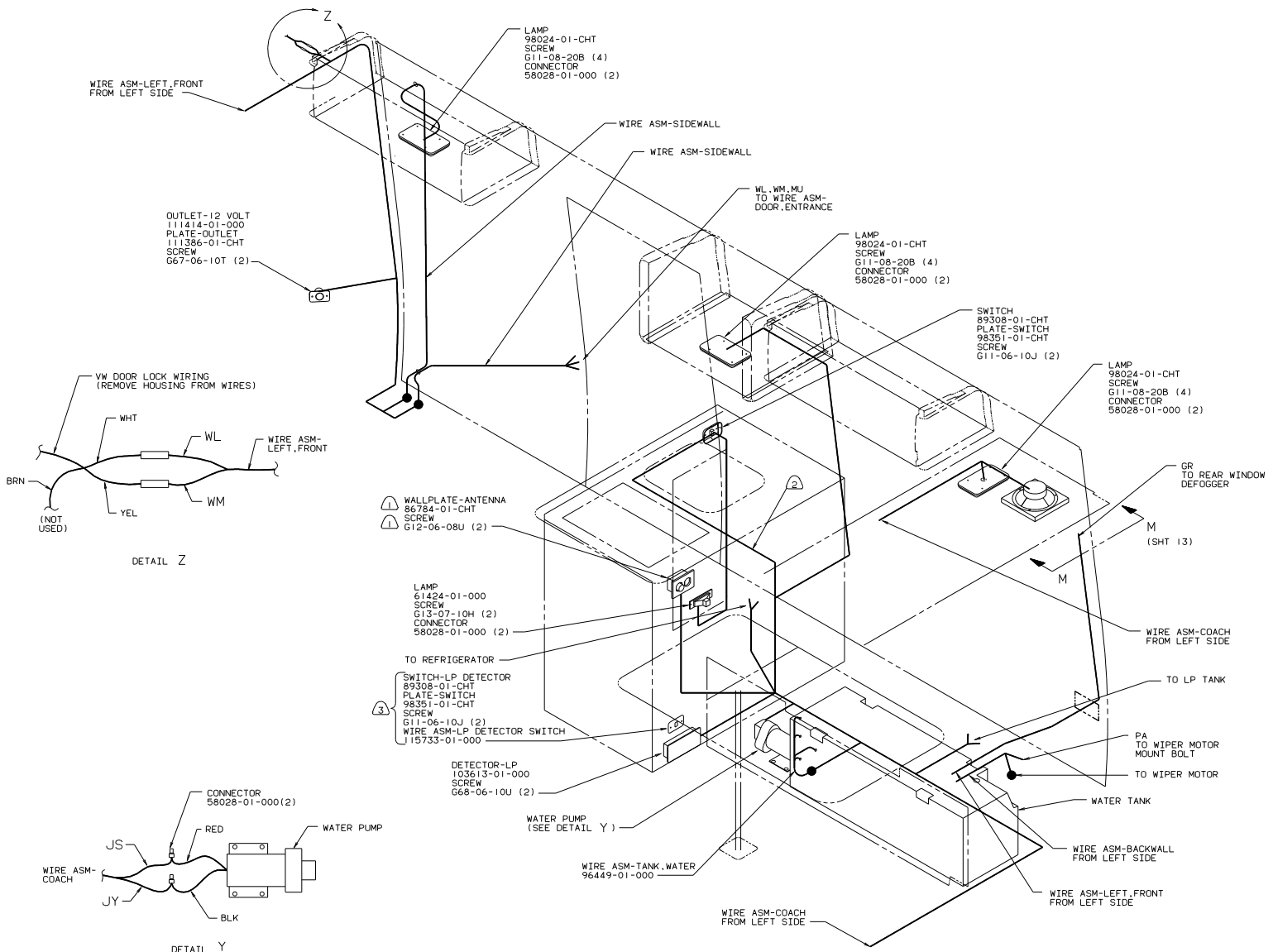
WIRE ASM-
LEFT, FRONT



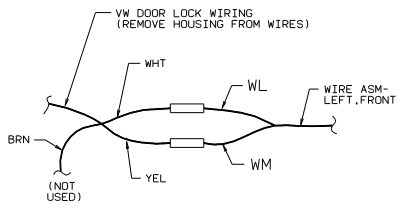
12V LEFT (EUR)
96 221RD

- ③ USE WITH EXTERIOR SHOWER PACKAGE.
- ② W/SHOWER SUMP SYSTEM.
- ① SEE DRAWING INSTL-FRONT END FOR ADDITIONAL INFORMATION.

TITLE: WIRING INSTL-BODY			
30 NET SCALE DRAWING	FILE NO	119907	
SHEET 13 OF 17	1 E		



OUTLET-12 VOLT
111414-01-000
PLATE-OUTLET
111386-01-CHT
SCREW
G67-06-10T (2)



WALLPLATE-ANTENNA
86784-01-CHT
SCREW
G12-06-08U (2)

LAMP
61424-01-000
SCREW
G13-07-10H (2)
CONNECTOR
58028-01-000 (2)

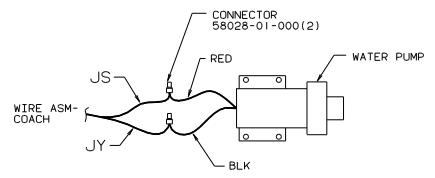
TO REFRIGERATOR

SWITCH-LP DETECTOR
89308-01-CHT
PLATE-SWITCH
98351-01-CHT
SCREW
G11-06-10J (2)
WIRE ASM-LP DETECTOR SWITCH
115733-01-000

DETECTOR-LP
103613-01-000
SCREW
G68-06-10U (2)

WATER PUMP
(SEE DETAIL Y)

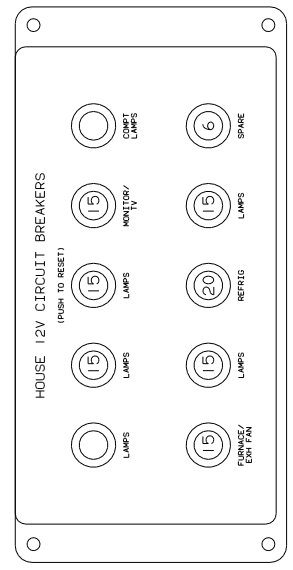
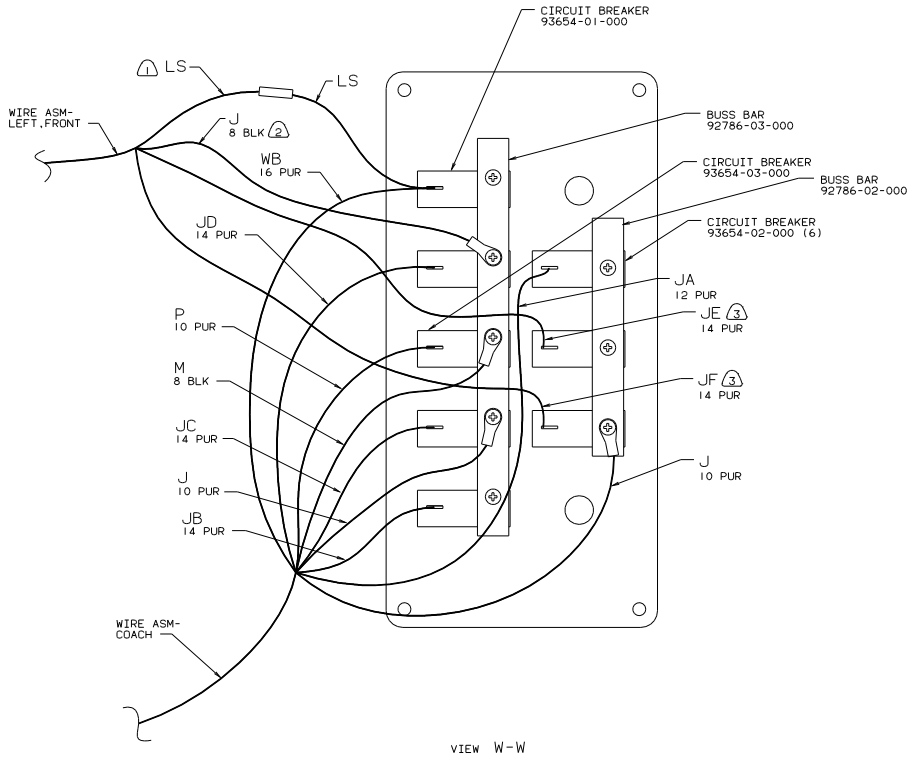
WIRE ASM-TANK, WATER
96449-01-000



12V RIGHT
96 221RD

- NOTES:
- ③ W/JAPAN EXPORT PACKAGE ONLY.
 - ② RUN ALONG TOP STICK OF GALLEY DIVIDER PANEL. CLAMP WITH CABLE TIE 108046-01-000 AND SCREW G67-10-12B APPROX. EVERY 750.
 - ① W/TV ANTENNA.

TITLE: WIRING INSTL-BODY	
30 NET SCALE DRAWING	REV 1.0
SHEET 14 OF 17	119907

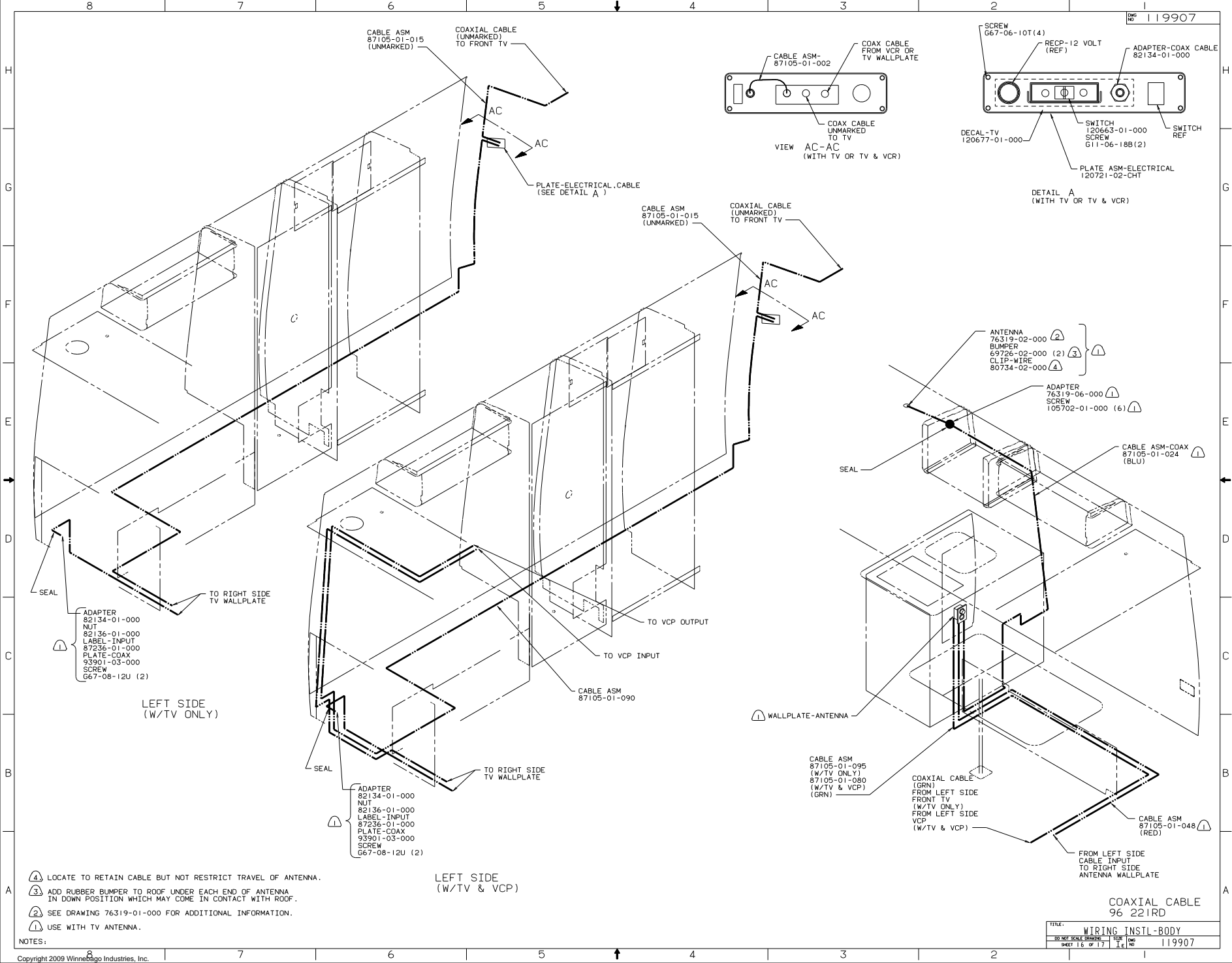


VIEW X-X
(LABEL ORIENTATION)

- NOTES:
- ③ REMOVE TERMINAL, STRIP WIRE, ADD TERMINAL 47443-01-000 AND CONNECT AS SHOWN.
 - ② REMOVE TERMINAL, STRIP WIRE, ADD TERMINAL 102777-03-000 AND CONNECT AS SHOWN.
 - ① REMOVE TERMINAL, STRIP WIRE AND SPLICE TO WIRE LS ON WIRE ASM-COACH.

12V BREAKER PANEL
(EUROPEAN)
96 221RD

TITLE: WIRING INSTL-BODY	
30 NET SCALE DRAWING	REV 1.0
SHEET 15 of 17	DATE 119907



CABLE ASM
87105-01-015
(UNMARKED)

COAXIAL CABLE
(UNMARKED)
TO FRONT TV

CABLE ASM-
87105-01-002

COAX CABLE
FROM VCR OR
TV WALLPLATE

SCREW
G67-06-10T(4)

RECP-12 VOLT
(REF)

ADAPTER-COAX CABLE
82134-01-000

VIEW AC-AC
(WITH TV OR TV & VCR)

DETAIL A
(WITH TV OR TV & VCR)

ADAPTER
82134-01-000
NUT
82136-01-000
LABEL-INPUT
87236-01-000
PLATE-COAX
93901-03-000
SCREW
G67-08-12U (2)

LEFT SIDE
(W/TV ONLY)

ADAPTER
82134-01-000
NUT
82136-01-000
LABEL-INPUT
87236-01-000
PLATE-COAX
93901-03-000
SCREW
G67-08-12U (2)

LEFT SIDE
(W/TV & VCP)

ANTENNA
BUMPER
69726-02-000 (2) (3) (4)
CLIP-WIRE
80734-02-000 (4)

ADAPTER
76319-06-000 (1)
SCREW
105702-01-000 (6) (1)

CABLE ASM-COAX
87105-01-024
(BLU)

CABLE ASM
87105-01-095
(W/TV ONLY)
87105-01-080
(W/TV & VCP)
(GRN)

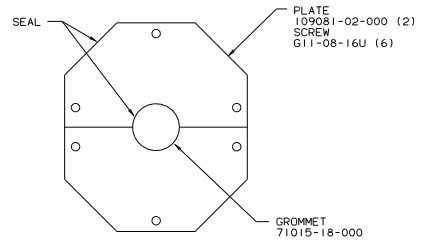
COAXIAL CABLE
(GRN)
FROM LEFT SIDE
FRONT TV
(W/TV ONLY)
FROM LEFT SIDE
VCP
(W/TV & VCP)

CABLE ASM
87105-01-048
(RED)

FROM LEFT SIDE
CABLE INPUT
TO RIGHT SIDE
ANTENNA WALLPLATE

- (4) LOCATE TO RETAIN CABLE BUT NOT RESTRICT TRAVEL OF ANTENNA.
- (3) ADD RUBBER BUMPER TO ROOF UNDER EACH END OF ANTENNA IN DOWN POSITION WHICH MAY COME IN CONTACT WITH ROOF.
- (2) SEE DRAWING 76319-01-000 FOR ADDITIONAL INFORMATION.
- (1) USE WITH TV ANTENNA.

TITLE: WIRING INSTL-BODY		DWG NO: 119907	
30 NET SCALE DRAWING	SHEET 16	OF 17	1 E



VIEW AB-AB

- (4) (7) LAMP-CLEARANCE, RED 102520-02-000 (5)
- CASKET 102541-01-000 (5)
- SCREW G39-08-16T (10)
- SEAL 102540-01-000 (10)
- BULB 26196-01-000 (5)
- LAMP ASM - CLEARANCE RED 121685-02-000(2)
- BULB-12V 124221-01-000(2)
- SCREW G39-08-16T(4)

- AIR CONDITIONER 93306-01-CHT 93306-02-CHT (240 VOLT)
- CEILING ASM 93307-01-000
- SPRING A/C 102289-01-000 (4)

- LAMP-CLEARANCE AMBER 113709-01-000 (5) (4) (7)
- SCREW G11-08-12B (10)
- LAMP ASM - CLEARANCE, CLEAR 121683-01-000(2)
- BULB-12V 124219-01-000(2)
- SCREW G11-08-12B (4)

- (11) (4) WIRE ASM-BACKWALL 112688-01-000
- (6) (8) 112688-03-000

WIRE ASM-LEFT, FRONT

GROMMET 23942-01-000

GROMMET 71015-22-000 SEAL

TO WASHER PUMP

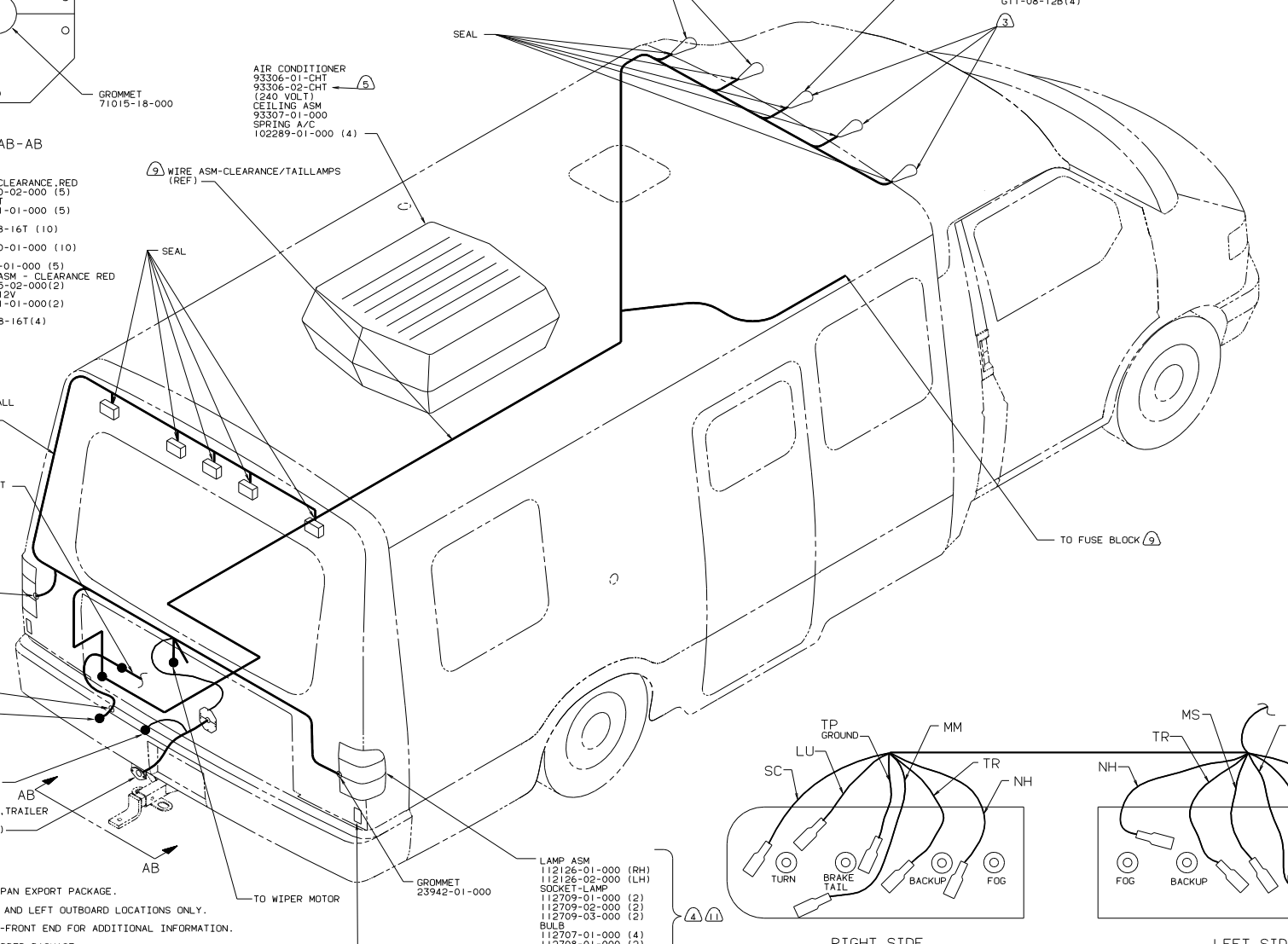
TO WIRE ASM-LICENSE PLATE LAMP

CONNECTOR-SOCKET, TRAILER SCREW 101618-01-000 (2)

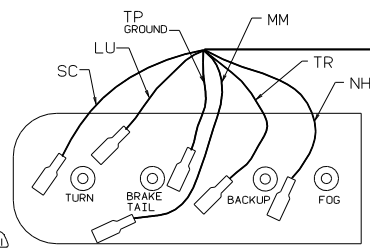
- (11) NOT USED WITH JAPAN EXPORT PACKAGE.
- (10) INSTALL ON RIGHT AND LEFT OUTBOARD LOCATIONS ONLY.
- (9) SEE WIRING INSTL-FRONT END FOR ADDITIONAL INFORMATION.
- (8) WITH WIE EXPORT PREP PACKAGE.
- (7) WITH JAPAN EXPORT PACKAGE DELETE ALL CLEARANCE LAMPS.
- (6) WITH JAPAN EXPORT PACKAGE.
- (5) WITH 220V ROOF AIR OPTION.
- (4) NOT USED WITH WIE EXPORT PREP PACKAGE.
- (3) CONNECT WIRE HX (PUR) TO RED WIRE AND WIRE MS (GRN) TO WHT WIRE.
- (2) LOCATE ON CENTER OF HOLE IN CAP ASM-REAR.

1. CONNECTOR-PLUG, TRAILER 113589-01-000 TO BE SUPPLIED LOOSE IN COACH WITH TRAILER TOW PACKAGE.

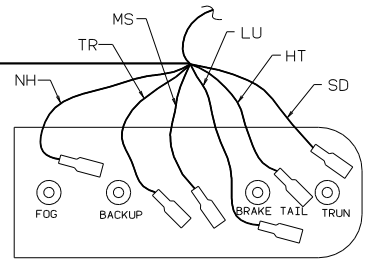
NOTES:



- LAMP ASM 112126-01-000 (RH)
- 112126-02-000 (LH)
- SOCKET-LAMP 112709-01-000 (2)
- 112709-02-000 (2)
- 112709-03-000 (2)
- BULB 112707-01-000 (4)
- 112708-01-000 (2)
- BRACKET ASM-TAIL LAMP 113778-03-000 (2)
- SCREW G11-10-10B (4)
- (6) (8) LIGHT ASM- (SEE DETAIL AA) 106646-02-000 (2)
- 120742-01-000(2)
- BRACKET ASM-TAIL LAMP(4) 120942-01-CHT (4)
- SCREW G39-10-129 (8)



RIGHT SIDE



LEFT SIDE

(6) (8) DETAIL AA (FROM BACK SIDE OF TAIL LAMPS)

EXTERIOR LIGHTING 96 221RD

TITLE:	WIRING INSTL-BODY
30 NET SCALE DRAWING	FIG 1E
SHEET 17 OF 17	119907