



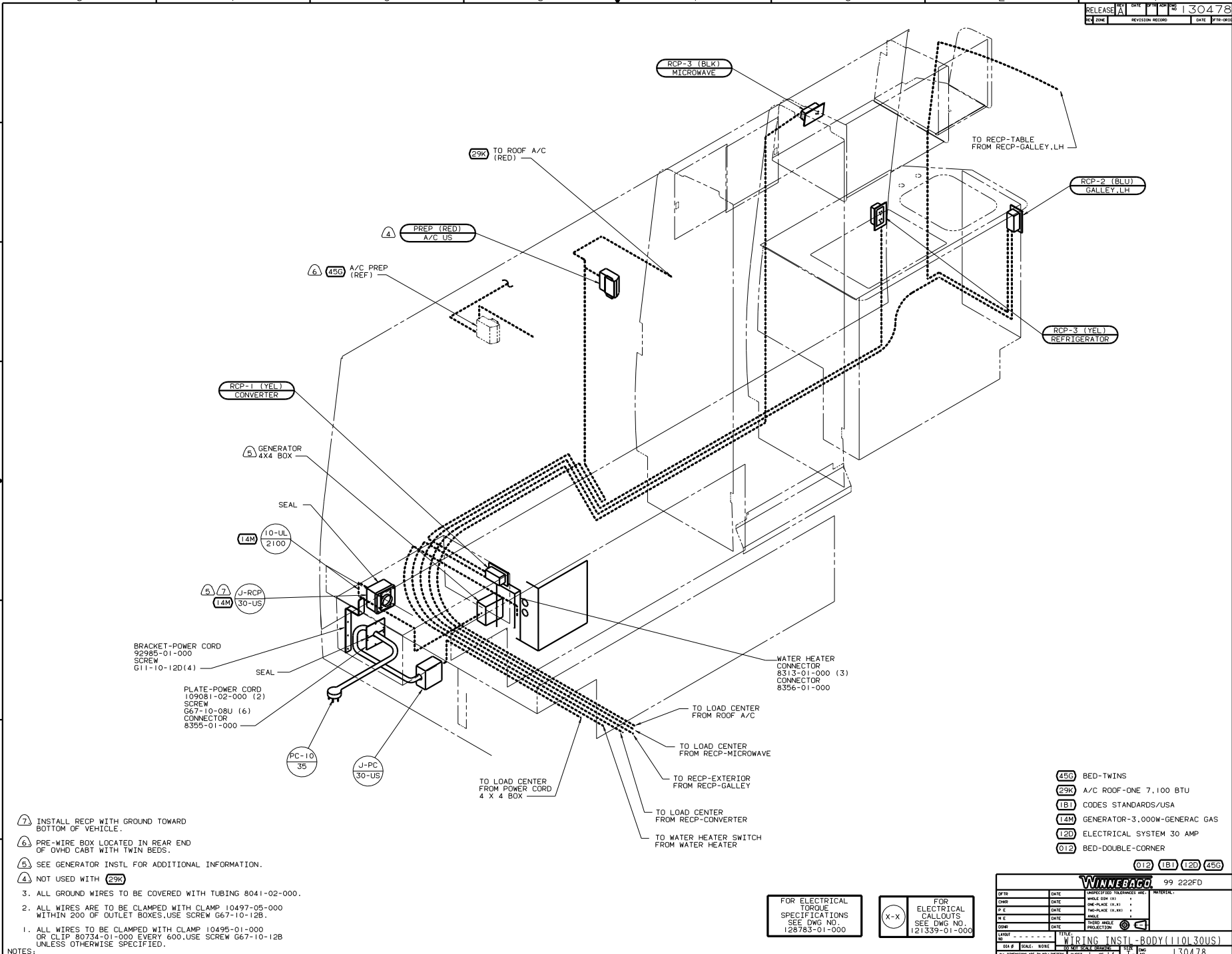
**DANGER**

**Danger of electrical shock, burns or death.** Always remove all power sources before attempting any repair, service or diagnostic work. Power can be present from shore power, generator, inverter or battery. All power sources must be disabled and secured before performing any service.



**CAUTION**

If you lack the skills, tools or equipment to perform diagnostic or repair work leave such work to an authorized Winnebago Industries dealer or other qualified shop.



- ⑦ INSTALL RECP WITH GROUND TOWARD BOTTOM OF VEHICLE.
- ⑥ PRE-WIRE BOX LOCATED IN REAR END OF OVHD CABT WITH TWIN BEDS.
- ⑤ SEE GENERATOR INSTL FOR ADDITIONAL INFORMATION.
- ④ NOT USED WITH ②9K
- 3. ALL GROUND WIRES TO BE COVERED WITH TUBING 8041-02-000.
- 2. ALL WIRES ARE TO BE CLAMPED WITH CLAMP 10497-05-000 WITHIN 200 OF OUTLET BOXES, USE SCREW G67-10-12B.
- 1. ALL WIRES TO BE CLAMPED WITH CLAMP 10495-01-000 OR CLIP 80734-01-000 EVERY 600, USE SCREW G67-10-12B UNLESS OTHERWISE SPECIFIED.

NOTES:

FOR ELECTRICAL TORQUE SPECIFICATIONS SEE DWG NO. 126783-01-000

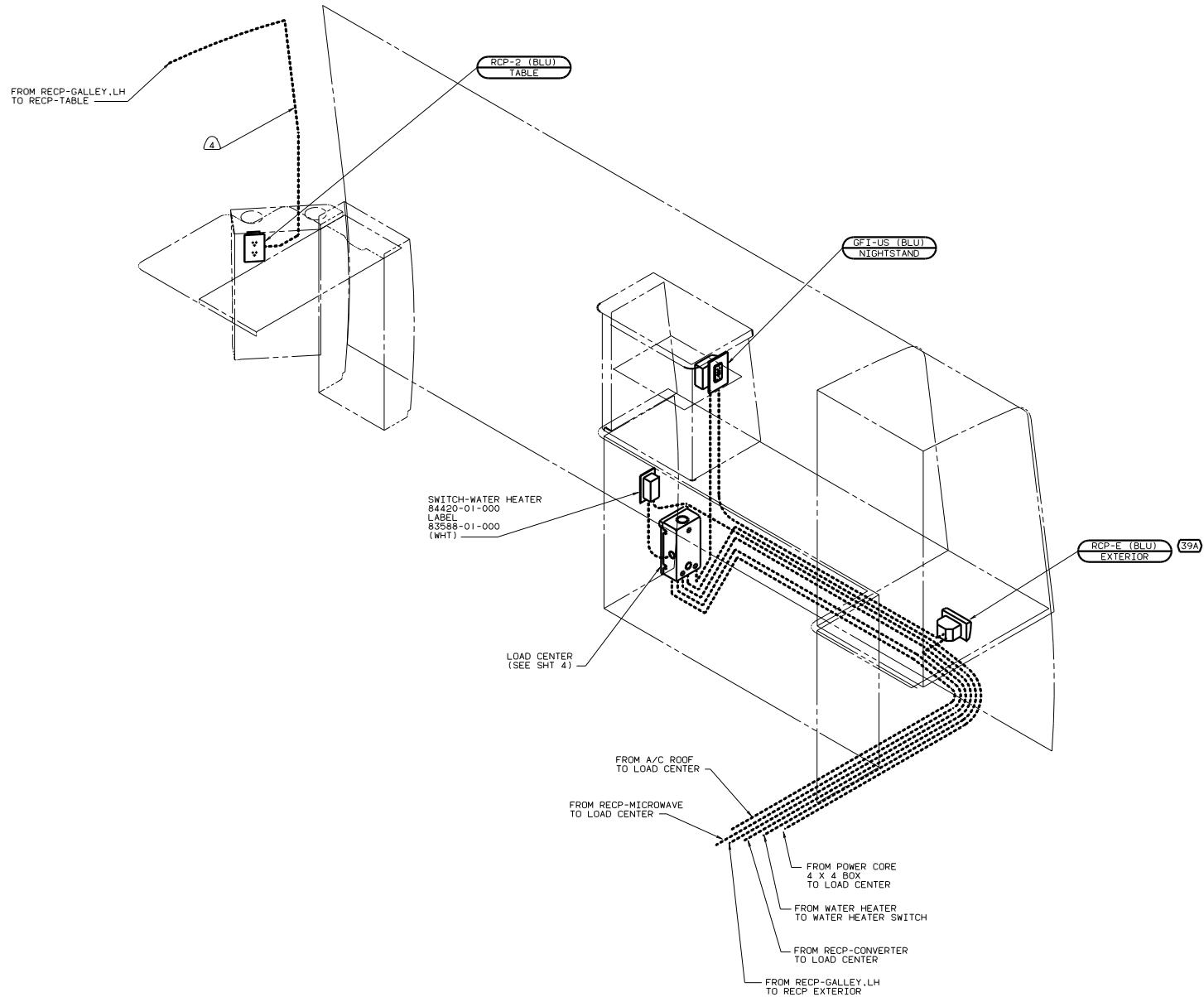
X-X FOR ELECTRICAL CALLOUTS SEE DWG NO. 121339-01-000

- ④5G BED-TWINS
- ②9K A/C ROOF-ONE 7,100 BTU
- 1B1 CODES STANDARDS/USA
- 14M GENERATOR-3,000W-GENERAC GAS
- 12D ELECTRICAL SYSTEM 30 AMP
- 012 BED-DOUBLE-CORNER

WINNEBAGO 99 222FD

OF IN	DATE	UNSPECIFIED TOLERANCES ARE:	MATERIAL
CHP	DATE	WHOLE DIM IN	
PIE	DATE	ONE-PLACE IN .01	
D/E	DATE	HOLE-PLACE IN .003	
DATE	DATE	ANGLE	
DATE	DATE	THRU HOLE PROJECTION	

LANE# TITLE: WIRING INSTL-BODY (110130US)  
 DIA # SCALE: NONE 20:1 SCALE: NONE 1:1  
 ALL DIMENSIONS ARE IN MILLIMETERS SHEET 1 OF 14 130478



- ④ WIRE ROUTED BEHIND TRANSITION PANEL.
- ALL GROUND WIRES TO BE COVERED WITH TUBING 8041-02-000.
  - ALL WIRES ARE TO BE CLAMPED WITH CLAMP 10497-05-000 WITHIN 200 OF OUTLET BOXES. USE SCREW G67-10-12B.
  - ALL WIRES TO BE CLAMPED WITH CLAMP 10495-01-000 OR CLIP 80734-01-000 EVERY 600. USE SCREW G67-10-12B UNLESS OTHERWISE SPECIFIED.

NOTES:

FOR ELECTRICAL TORQUE SPECIFICATIONS SEE DWG NO. 128783-01-000

FOR ELECTRICAL CALLOUTS SEE DWG NO. 121339-01-000

- ③9A EXT RECEPTACLE DPLX 120VAC
- ①B1 CODES STANDARDS/USA
- ①2D ELECTRICAL SYSTEM 30 AMP
- ①12 BED-DOUBLE-CORNER

99 222FD ①B1 ①2D ①12

WIRING INSTL-BODY(110R30US)  
 SHEET 2 OF 14  
 130478

FROM RECP-GALLEY  
TO RECP-TABLE

RCP-2 (BLU)  
TABLE

4

SWITCH-WATER HEATER  
84420-01-000  
LABEL  
83588-01-000  
(WHIT)

LOAD CENTER  
(SEE SHT 4)

RCP-E (BLU) (39A)  
EXTERIOR

FROM RECP-MICROWAVE  
TO LOAD CENTER

FROM A/C ROOF  
TO LOAD CENTER

GFT-US (BLU)  
NIGHTSTAND

FROM POWER CORD  
4 X 4 BOX  
TO LOAD CENTER

FROM WATER HEATER  
TO WATER HEATER SWITCH

FROM RECP-CONVERTER  
TO LOAD CENTER

FROM RECP-GALLEY, LH  
TO RECP-EXTERIOR

- 4 WIRE ROUTED BEHIND TRANSITION PANEL.
- ALL GROUND WIRES TO BE COVERED WITH TUBING 8011-02-000.
  - ALL WIRES ARE TO BE CLAMPED WITH CLAMP 10497-05-000 WITHIN 200 OF OUTLET BOXES. USE SCREW G67-10-12B.
  - ALL WIRES TO BE CLAMPED WITH CLAMP 10495-01-000 OR CLIP 80734-01-000 EVERY 600. USE SCREW G67-10-12B UNLESS OTHERWISE SPECIFIED.

NOTES:

FOR ELECTRICAL  
TORQUE  
SPECIFICATIONS  
SEE DWG NO.  
128783-01-000

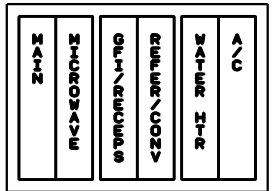
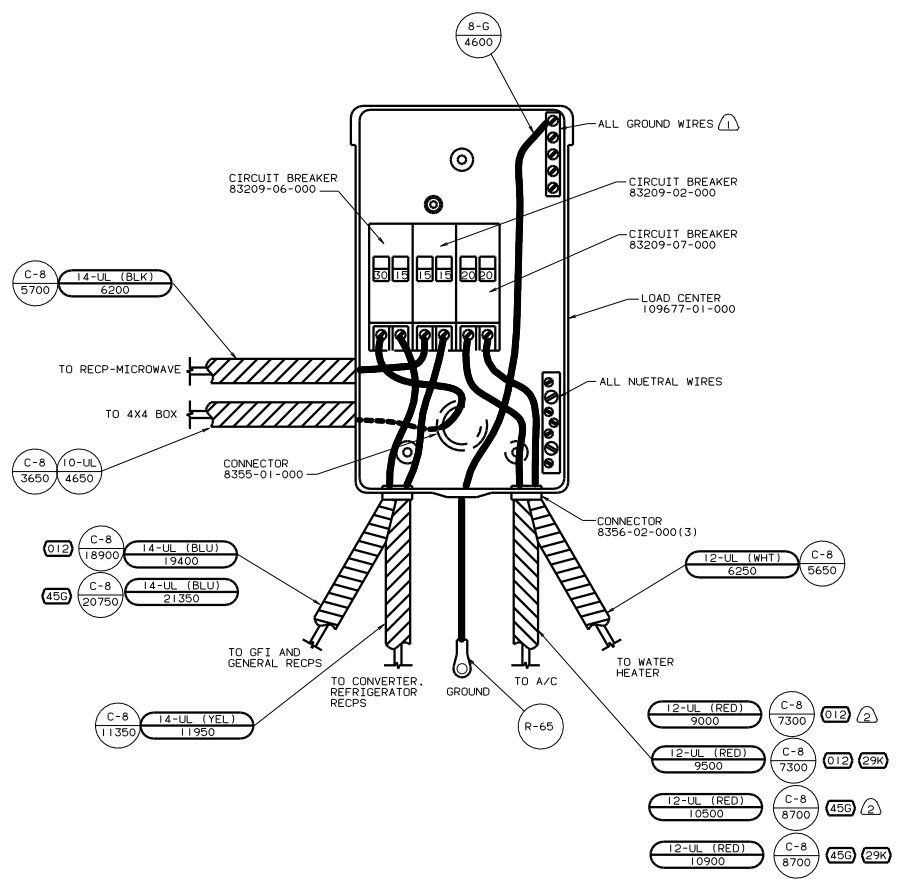
FOR  
ELECTRICAL  
CALLOUTS  
SEE DWG NO.  
121339-01-000



- 45G BED-TWINS
- 39A EXT RECEPTACLE DPLX 120VAC
- 1B1 CODES STANDARDS/USA
- 12D ELECTRICAL SYSTEM 30 AMP

99 222FD 1B1 12D 45G

WIRING INSTL-BODY (110R30US)  
SHEET 3 OF 14



INSTALL LABEL ON BACK SIDE OF CABINET ACCESS DOOR.

NOTES:  
 (2) WITHOUT (29K)  
 (1) ALL GROUND WIRES TO BE COVERED WITH TUBING 8041-02-000.

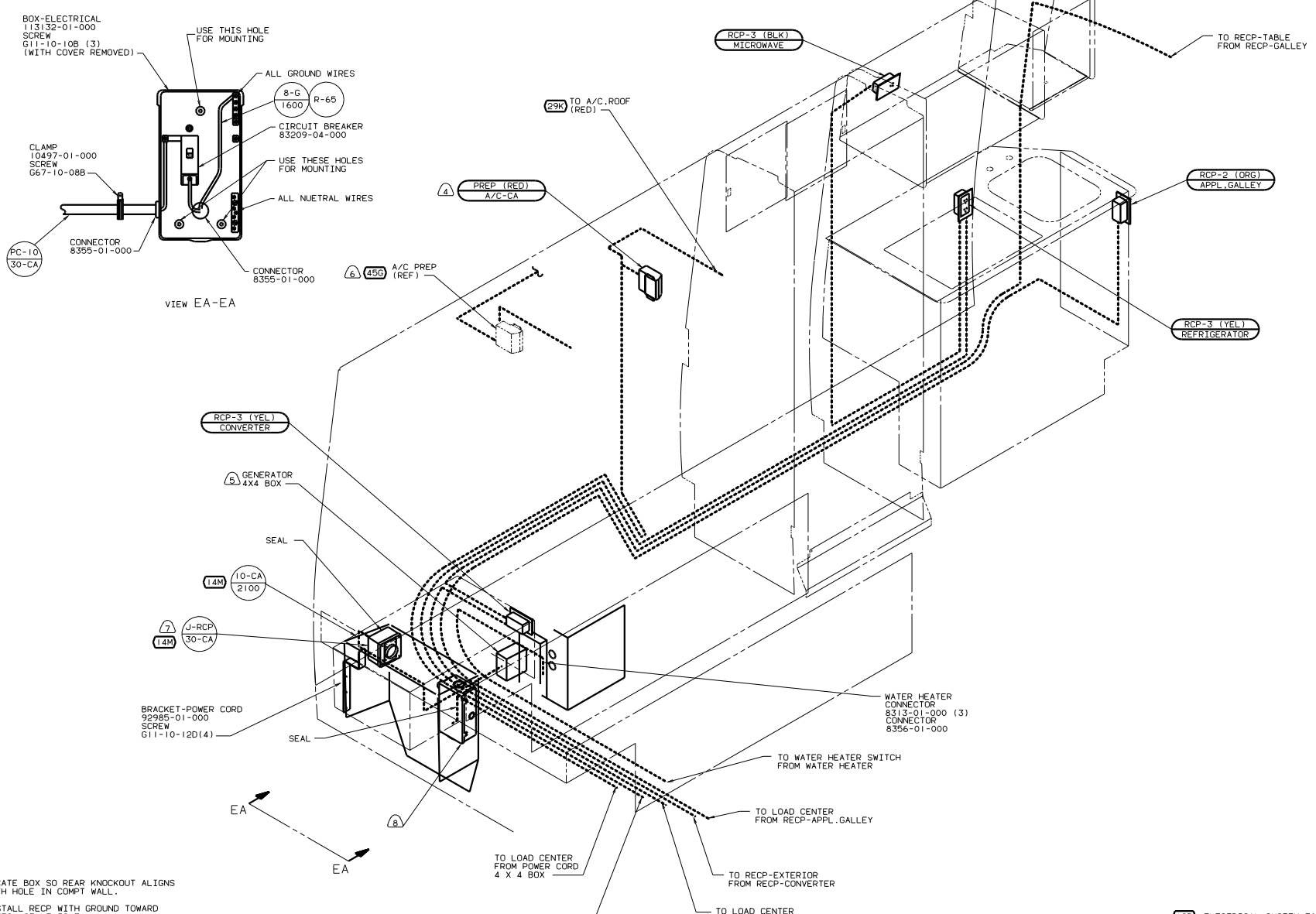
- (45G) BED-TWINS
- (29K) A/C ROOF-ONE 7.100 BTU
- (181) CODES STANDARDS/USA
- (120) ELECTRICAL SYSTEM 30 AMP
- (012) BED-DOUBLE-CORNER

FOR ELECTRICAL TORQUE SPECIFICATIONS SEE DWS NO. 128783-01-000

FOR ELECTRICAL CALLOUTS SEE DWS NO. 121339-01-000

99 222FD (181) (120)

TITLE		DRAWING INSTL-BODY(30 LC US)	
NO. 222	DATE	REV	DATE
4	14	1	14
SHEET		PAGE NO.	
4 OF 14		1 OF 1	
		130478	



- ⑧ LOCATE BOX SO REAR KNOCKOUT ALIGNS WITH HOLE IN COMPT WALL.
  - ⑦ INSTALL RECP WITH GROUND TOWARD BOTTOM OF VEHICLE.
  - ⑥ PRE-WIRE BOX IS LOCATED IN REAR END OF OVHD CABT WITH TWIN BEDS.
  - ⑤ SEE GENERATOR INSTL FOR ADDITIONAL INFORMATION.
  - ④ NOT USED WITH ②9K
3. ALL GROUND WIRES TO BE COVERED WITH TUBING 8011-02-000.
  2. ALL WIRES ARE TO BE CLAMPED WITH CLAMP 10497-05-000 WITHIN 200 OF OUTLET BOXES. USE SCREW 667-10-12B.
  1. ALL WIRES TO BE CLAMPED WITH CLAMP 10495-01-000 OR CLIP 80734-01-000 EVERY 600. USE SCREW 667-10-12B UNLESS OTHERWISE SPECIFIED.

NOTES:

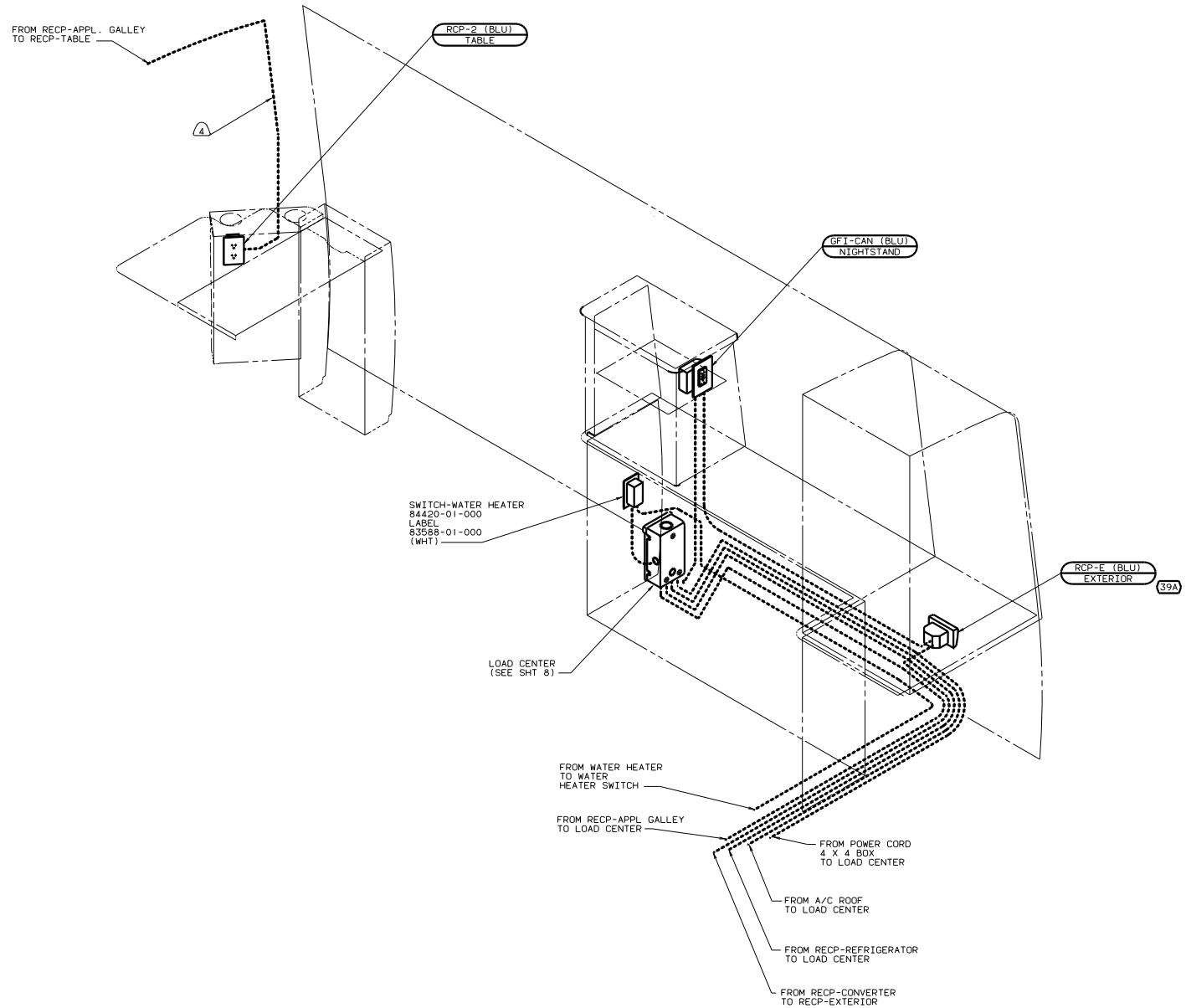
- ①20 ELECTRICAL SYSTEM 30 AMP
- ④56 BED-TWINS
- ②9K A/C ROOF-ONE 7,100 BTU
- ②65 CODES/STANDARDS-CSA/CMVSS
- ④4M GENERATOR-3,000W-GENERAC GAS
- ①12 BED-DOUBLE-CORNER

FOR ELECTRICAL TORQUE SPECIFICATIONS SEE DWG NO. 128783-01-000

FOR ELECTRICAL CALLOUTS SEE DWG NO. 121339-01-000

99 222FD ②65 ①20 ①12 ④56

TITLE	WIRING INSTL-BODY(110130CAN)
NO. OF SHEETS	5 OF 14
SHEET NO.	16
DWG NO.	130478



- ④ WIRE ROUTED IN SIDEWALL.
- ALL GROUND WIRES TO BE COVERED WITH TUBING 8011-02-000.
  - ALL WIRES ARE TO BE CLAMPED WITH CLAMP 10497-05-000 WITHIN 200 OF OUTLET BOXES. USE SCREW G67-10-12B.
  - ALL WIRES TO BE CLAMPED WITH CLAMP 10495-01-000 OR CLIP 80734-01-000 EVERY 600. USE SCREW G67-10-12B UNLESS OTHERWISE SPECIFIED.

NOTES:

FOR ELECTRICAL TORQUE SPECIFICATIONS SEE DWG NO. 128783-01-000

FOR ELECTRICAL CALLOUTS SEE DWG NO. 121339-01-000

- 39A EXT RECEPTACLE DPLX 120VAC
- 265 CODES/STANDARDS-CSA/CMVSS
- 120 ELECTRICAL SYSTEM 30 AMP
- 012 BED-DOUBLE-CORNER

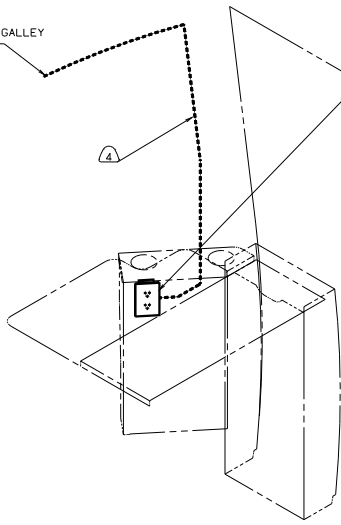
99 222FD 265 120 012

TITLE: WIRING INSTL-BODY (L10R30CAN)  
SHEET 6 OF 14

FROM RECP-APPL GALLEY  
TO RECP-TABLE

RCP-2 (BLU)  
TABLE

4



SWITCH-WATER HEATER  
84420-01-000  
LABEL  
83588-01-000  
(WHIT)

LOAD CENTER  
(SEE SHT 8)

RCP-E (BLU)  
EXTERIOR 39A

FROM WATER HEATER  
TO WATER  
HEATER SWITCH

GFI-CAN (BLU)  
NIGHTSTAND

FROM POWER CORD  
4 X 4 BOX  
TO LOAD CENTER

FROM A/C ROOF  
TO LOAD CENTER

FROM RECP-REFRIGERATOR  
TO LOAD CENTER

FROM RECP-CONVERTER  
TO RECP-EXTERIOR

FROM RECP-APPL GALLEY  
TO LOAD CENTER

4 WIRE ROUTED IN SIDEWALL.

- 3. ALL GROUND WIRES TO BE COVERED WITH TUBING 8011-02-000.
- 2. ALL WIRES ARE TO BE CLAMPED WITH CLAMP 10497-05-000 WITHIN 200 OF OUTLET BOXES. USE SCREW G67-10-12B.
- 1. ALL WIRES TO BE CLAMPED WITH CLAMP 10495-01-000 OR CLIP 80734-01-000 EVERY 600. USE SCREW G67-10-12B UNLESS OTHERWISE SPECIFIED.

NOTES:

FOR ELECTRICAL  
TORQUE  
SPECIFICATIONS  
SEE DWG NO.  
128783-01-000

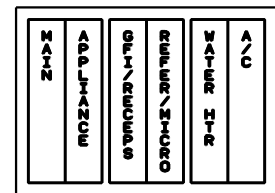
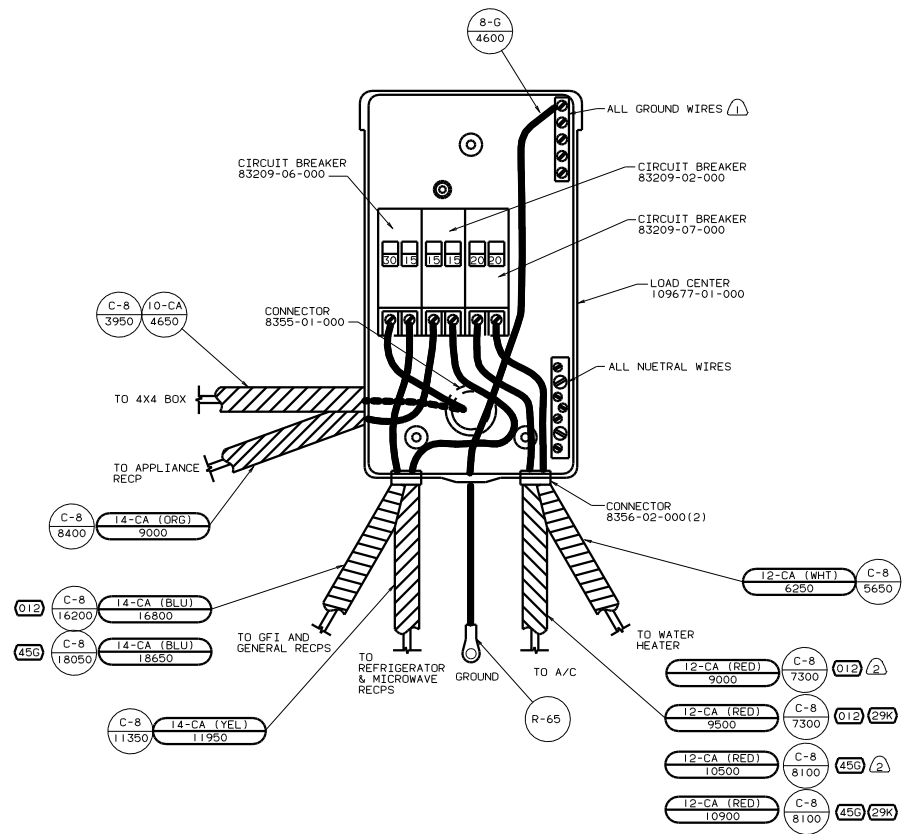
FOR  
ELECTRICAL  
CALLOUTS  
SEE DWG NO.  
121339-01-000

- 45G BED-TWINS
- 39A EXT RECEPTACLE DPLX 120VAC
- 265 CODES/STANDARDS-CSA/CMVSS
- 12D ELECTRICAL SYSTEM 30 AMP

99 222FD 265 12D 45G

TITLE: WIRING INSTL-BODY(110R30CAN)  
DWG NO 130478  
SHEET 7 OF 15





LABEL 95721-39-000

INSTALL LABEL ON BACK SIDE OF CABINET ACCESS DOOR.

- NOTES:
- (2) WITHOUT (29K)
  - (1) ALL GROUND WIRES TO BE COVERED WITH TUBING 8041-02-000.

- (45G) BED-TWINS
- (29K) A/C ROOF-ONE 7,100 BTU
- (265) CODES/STANDARDS-CSA/CMVSS
- (12D) ELECTRICAL SYSTEM 30 AMP
- (012) BED-DOUBLE-CORNER

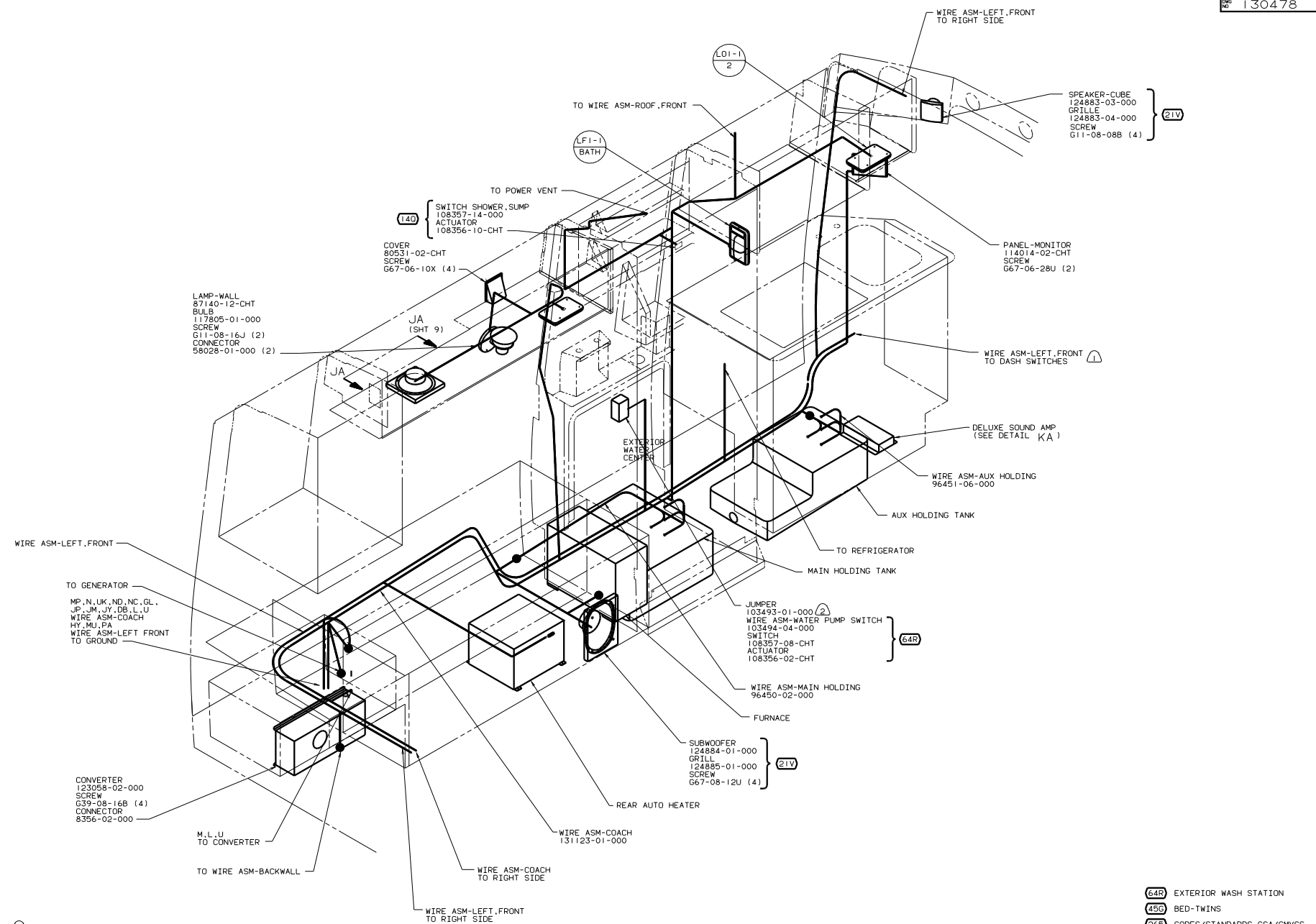
FOR ELECTRICAL TORQUE SPECIFICATIONS SEE DWG NO. 128763-01-000

FOR ELECTRICAL CALLOUTS SEE DWG NO. 121339-01-000

99 222FD (265) (12D)

TITLE: WIRING INSTL-BODY(30 LC CAN)	
NO. OF SHEETS: 8	SHEET NO: 8 OF 14
DATE: 11/01/05	DWG NO: 130478





- NOTES:
- ⑥ RELAY ASM PROVIDED WITH WIRE ASM-AMPLIFIER.
  - ⑤ WITHOUT 21V
  - ④ CONNECT MATING 4 PIN HOUSING.
  - ③ CONNECT MATING 5 PIN HOUSING.
  - ② NOT USED WITH 64R
  - ① SEE DRAWING INSTL-FRONT END FOR ADDITIONAL INFORMATION.

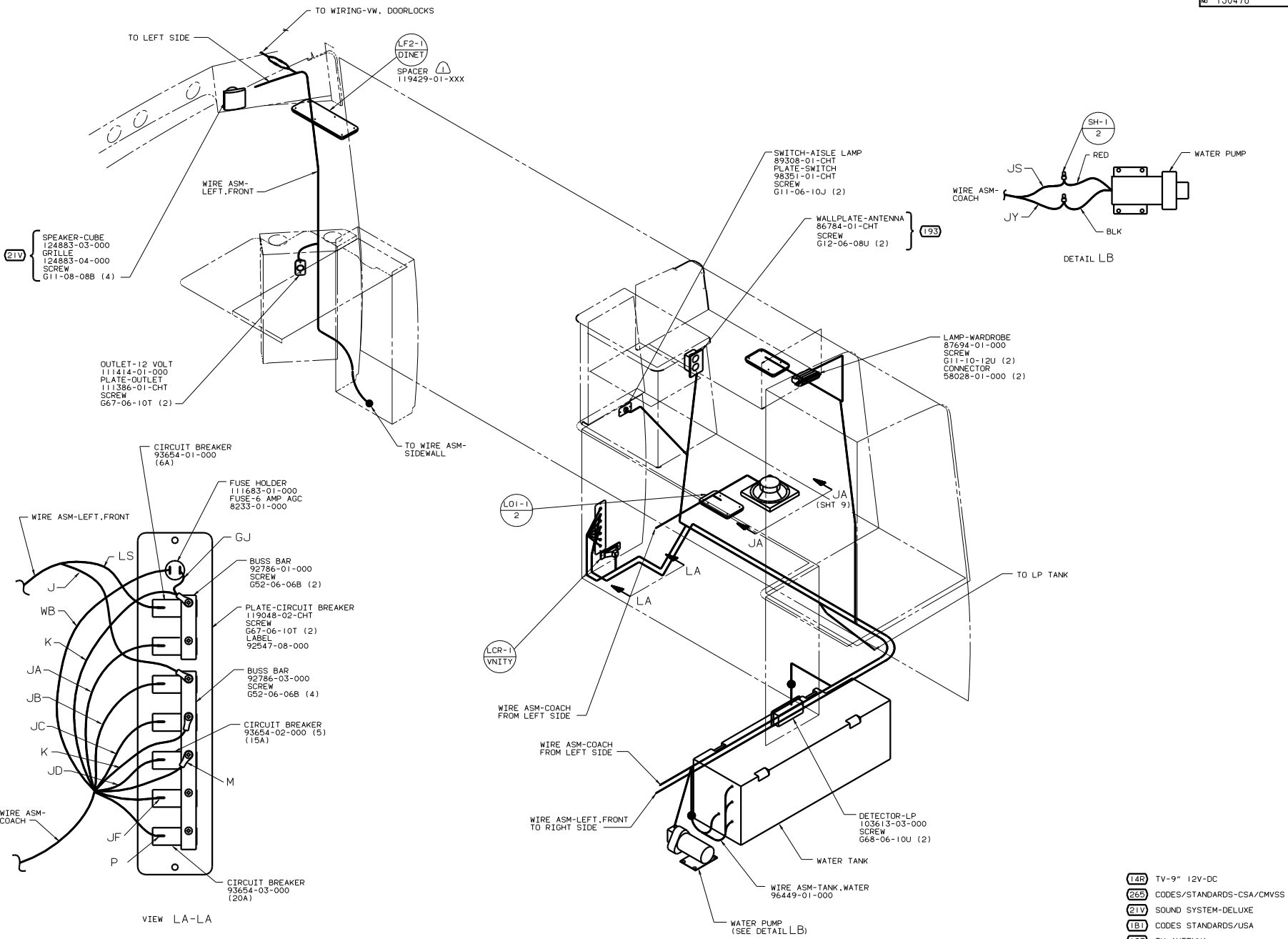
- 64R EXTERIOR WASH STATION
- 45G BED-TWINS
- 26S CODES/STANDARDS-CSA/CMVSS
- 21V SOUND SYSTEM-DELUXE
- 1B1 CODES STANDARDS/USA
- 140 SHOWER PACKAGE

FOR ELECTRICAL  
TORQUE  
SPECIFICATIONS  
SEE DWG NO.  
128783-01-000

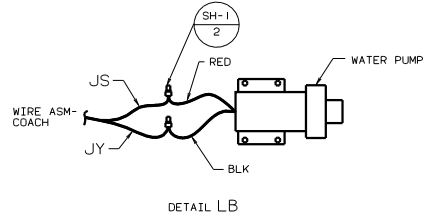
FOR  
ELECTRICAL  
CALLOUTS  
SEE DWG NO.  
121339-01-000

99 222FD 1B1 26S 45G

TITLE: WIRING INSTL-BODY (12 L)



- (21V) SPEAKER-CUBE 124883-03-000
- GRILLE 124883-04-000
- SCREW G11-08-08B (4)



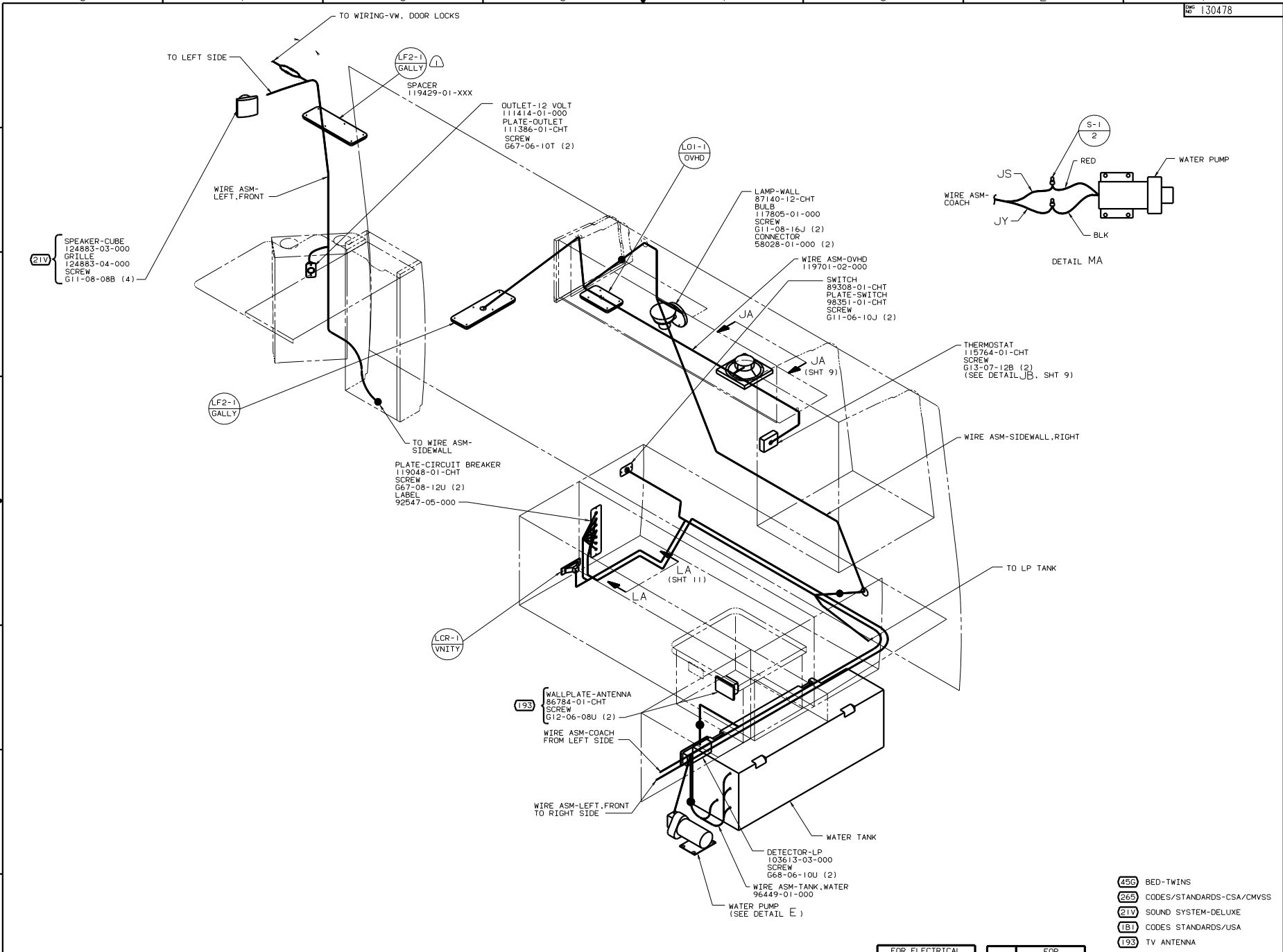
- (14R) TV-9" 12V-DC
- (26S) CODES/STANDARDS-CSA/CMVSS
- (21V) SOUND SYSTEM-DELUXE
- (1B1) CODES STANDARDS/USA
- (193) TV ANTENNA
- (012) BED-DOUBLE-CORNER

FOR ELECTRICAL TORQUE SPECIFICATIONS SEE DWG NO. 128783-01-000

FOR ELECTRICAL CALLOUTS SEE DWG NO. 121339-01-000

99 222FD (1B1) (26S) (012)  
 TITLE: WIRING INSTL-BODY (12\_R)  
 SHEET 11 OF 14

NOTES:  
 (1) PILOT HOLES MUST BE DRILLED FOR SCREW CLEARANCE.



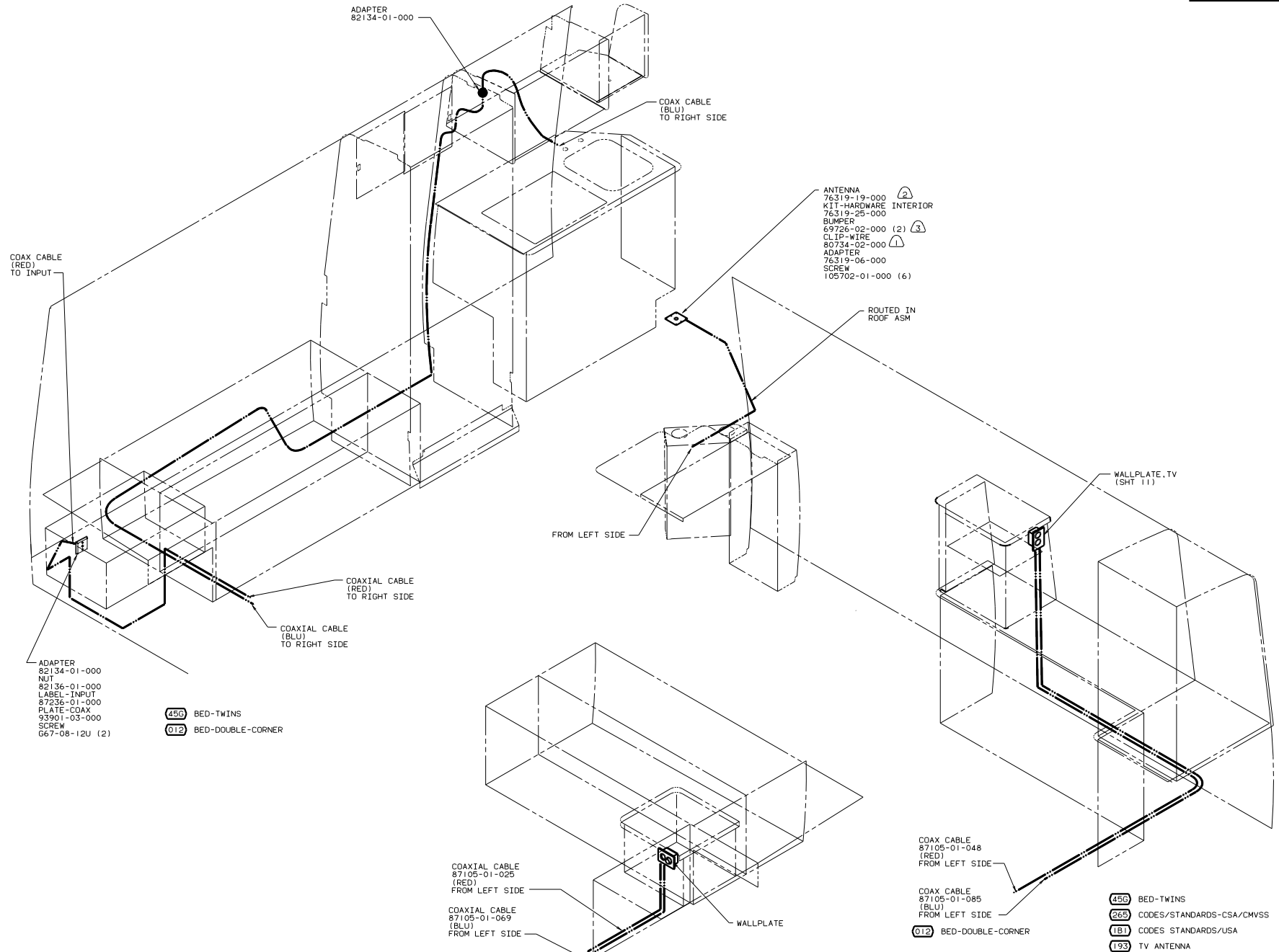
PILOT HOLES MUST BE DRILLED FOR SCREW CLEARANCE.

FOR ELECTRICAL TORQUE SPECIFICATIONS SEE DWG NO. 128783-01-000

FOR ELECTRICAL CALLOUTS SEE DWG NO. 121339-01-000

- (456) BED-TWINS
- (265) CODES/STANDARDS-CSA/CMVSS
- (21V) SOUND SYSTEM-DELUXE
- (181) CODES STANDARDS/USA
- (193) TV ANTENNA

99 222FD (181) (265) (456)  
 TITLE: WIRING INSTL-BODY (12\_R)  
 SHEET 12 OF 14



- 3 ADD RUBBER BUMPER TO ROOF UNDER EACH END OF ANTENNA IN DOWN POSITION WHICH MAY IN CONTACT WITH ROOF.
- 2 SEE DRAWING 76319-01-000 FOR ADDITIONAL INFORMATION.
- 1 LOCATE TO RETAIN CABLE BUT NOT RESTRICT TRAVEL OF ANTENNA.

FOR ELECTRICAL TORQUE SPECIFICATIONS SEE DWG NO 128783-01-000

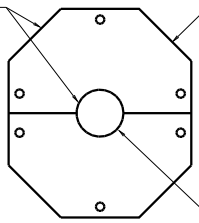
99 222FD 181 265 193

TITLE: WIRING INSTL-BODY(COAX)

NO. OF SHEETS: 14 SHEET 13 OF 14

130478

SEAL  
PLATE 109081-02-000 (2)  
SCREW G11-08-16U (6)



VIEW PA-PA

GROMMET 71015-18-000

AIR CONDITIONER 93306-01-CHT  
CEILING ASM 93307-03-000  
SPRING A/C 102289-01-000 (4)

LAMP-CLEARANCE, AMBER 113709-01-000 (5)  
SCREW G11-08-12T (10)  
SEAL

WIRE ASM-CLEARANCE/TAILLAMPS (REF)

WIRE ASM-LEFT, FRONT

LAMP-CLEARANCE, RED 111102-01-000 (5)  
LAMP-MARKER, LENS, RED 111102-03-000 (5)  
SCREW G39-08-12U (EXT) (10)  
SEAL

LAMP ASM-CENTER BRAKE 121950-01-000  
SCREW (SUPPLIED W/LAMP)

WIRE ASM-BACKWALL 130558-01-000

TO WIPER MOTOR

TO WASHER PUMP

CONNECTOR-SOCKET, TRAILER SCREW 101618-01-000 (2)

TO WIRE ASM- LICENSE PLATE LAMP

LAMP ASM 112126-03-000 (RH)  
112126-04-000 (LH)  
SOCKET-LAMP 112709-01-000 (2)  
112709-02-000 (2)  
112709-03-000 (2)  
BULB 112707-01-000 (4)  
112708-01-000 (2)  
BRACKET ASM-TAIL LAMP 113778-03-000 (2)  
SCREW G39-10-209 (4)  
GROMMET 23942-01-000 (2)

TO FUSE BLOCK

ON INTERIOR OF CAP, GRIND OFF TIP OF SCREW PRIOR TO SEALING (TO PROVIDE INNER LINER CLEARANCE).

CONNECT WIRE HX (PUR) TO RED WIRE AND WIRE MS (GRN) TO WHT WIRE.

SEE WIRING INSTL-FRONT END FOR ADDITIONAL INFORMATION.

SEE BUMPER ASM-REAR FOR ADDITIONAL INFORMATION.

LOCATE ON CENTER OF HOLE IN CAP ASM-REAR.

CONNECTOR-PLUG, TRAILER 113589-01-000 TO BE SUPPLIED LOOSE IN COACH WITH TRAILER TOW PACKAGE.

NOTES:

A/C ROOF-ONE 7,100 BTU  
CODES/STANDARDS-CSA/CMVSS  
CODES STANDARDS/USA  
99 222FD

FOR ELECTRICAL TORQUE SPECIFICATIONS SEE DWG NO. 128783-01-000

FOR ELECTRICAL CALLOUTS SEE DWG NO. 121339-01-000

WIRING INSTL-BODY  
SHEET 14 OF 14