



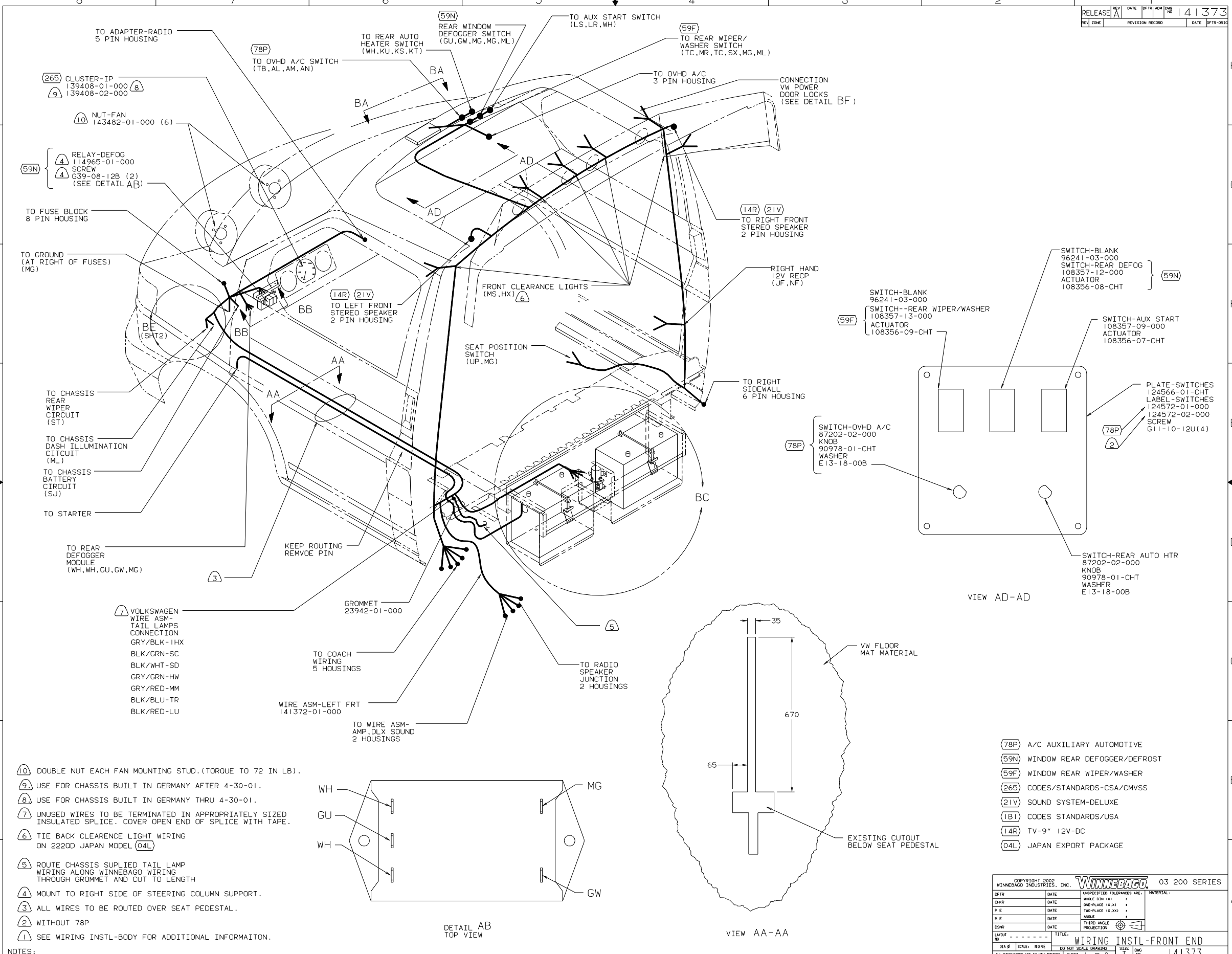
**DANGER**

**Danger of electrical shock, burns or death.** Always remove all power sources before attempting any repair, service or diagnostic work. Power can be present from shore power, generator, inverter or battery. All power sources must be disabled and secured before performing any service.

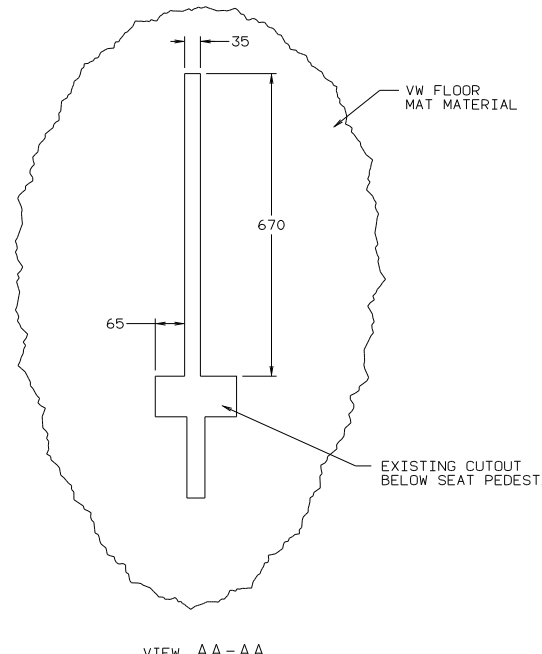
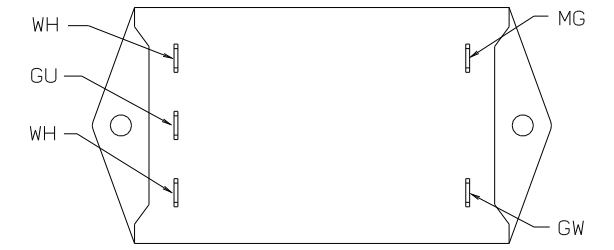


**CAUTION**

If you lack the skills, tools or equipment to perform diagnostic or repair work leave such work to an authorized Winnebago Industries dealer or other qualified shop.



- NOTES:**
- ⑩ DOUBLE NUT EACH FAN MOUNTING STUD. (TORQUE TO 72 IN LB).
  - ⑨ USE FOR CHASSIS BUILT IN GERMANY AFTER 4-30-01.
  - ⑧ USE FOR CHASSIS BUILT IN GERMANY THRU 4-30-01.
  - ⑦ UNUSED WIRES TO BE TERMINATED IN APPROPRIATELY SIZED INSULATED SPLICE. COVER OPEN END OF SPLICE WITH TAPE.
  - ⑥ TIE BACK CLEARANCE LIGHT WIRING ON 2220D JAPAN MODEL (04L)
  - ⑤ ROUTE CHASSIS SUPPLIED TAIL LAMP WIRING ALONG WINNEBAGO WIRING THROUGH GROMMET AND CUT TO LENGTH
  - ④ MOUNT TO RIGHT SIDE OF STEERING COLUMN SUPPORT.
  - ③ ALL WIRES TO BE ROUTED OVER SEAT PEDESTAL.
  - ② WITHOUT 78P
  - ① SEE WIRING INSTL-BODY FOR ADDITIONAL INFORMATION.



- ⑦8P A/C AUXILIARY AUTOMOTIVE
- ⑤9N WINDOW REAR DEFOGGER/DEFROST
- ⑤9F WINDOW REAR WIPER/WASHER
- ②65 CODES/STANDARDS-CSA/CMVSS
- ②1V SOUND SYSTEM-DELUXE
- ①B1 CODES STANDARDS/USA
- ①4R TV-9" 12V-DC
- ①4L JAPAN EXPORT PACKAGE

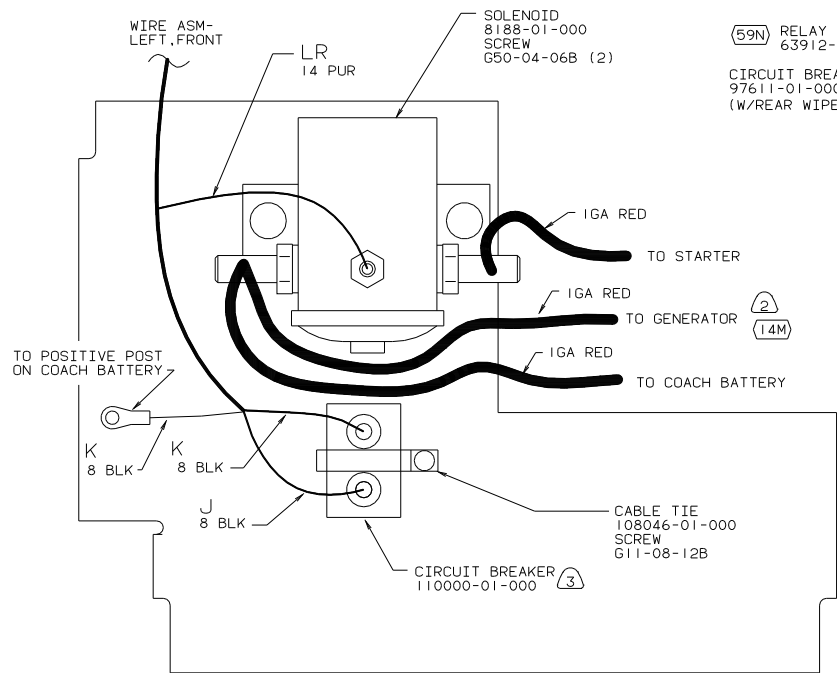
COPYRIGHT 2002 WINNEBAGO INDUSTRIES, INC. **WINNEBAGO** 03 200 SERIES

DATE	UNSPECIFIED TOLERANCES ARE:	MATERIAL:
DATE	WHOLE DIM (X)	
DATE	ONE-PLACE (X, X1)	
DATE	TWO-PLACE (X, XX)	
DATE	ANGLE	
DATE	THIRD ANGLE PROJECTION	

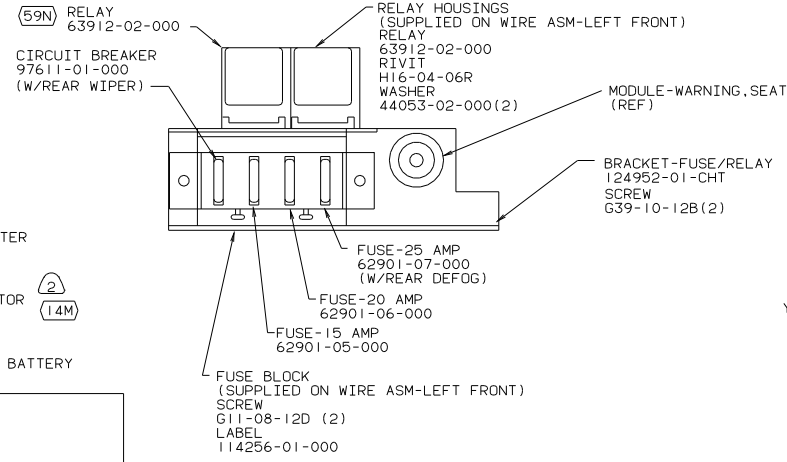
LAYOUT NO. TITLE: **WIRING INSTL-FRONT END**

DIA # SCALE: NONE DO NOT SCALE DRAWINGS SIZE: 11x17 SHEET 1 OF 2 I.E. NO. 141373

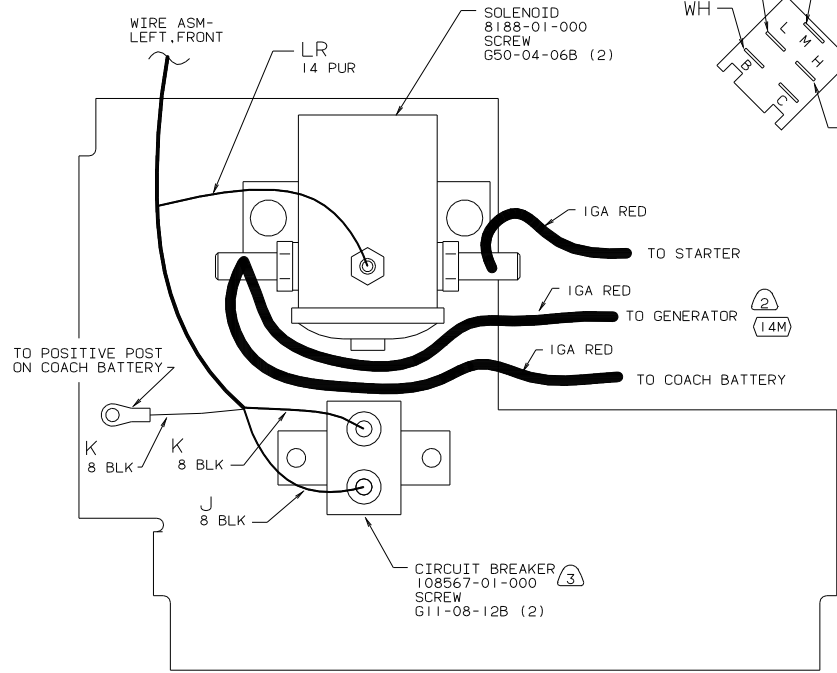
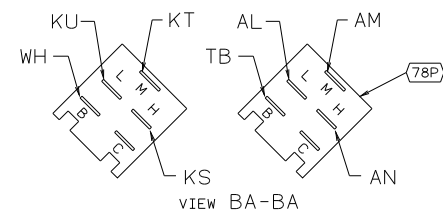
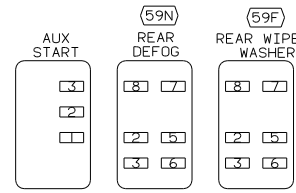
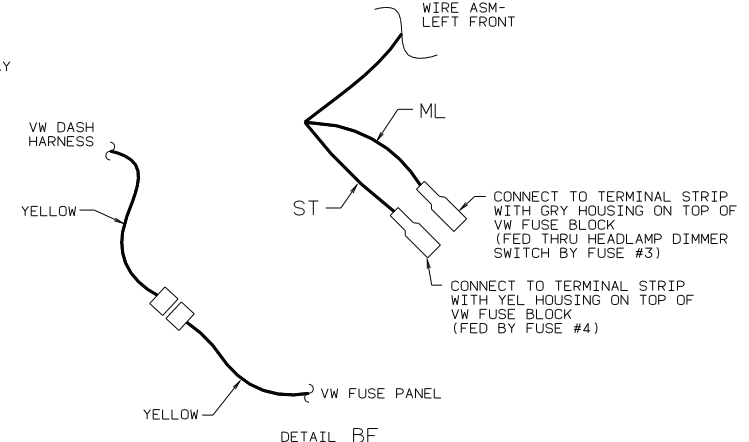
ALL DIMENSIONS ARE IN MILLIMETERS REF: 137231 C | 07/23/02



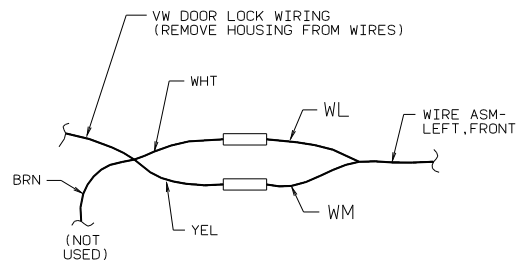
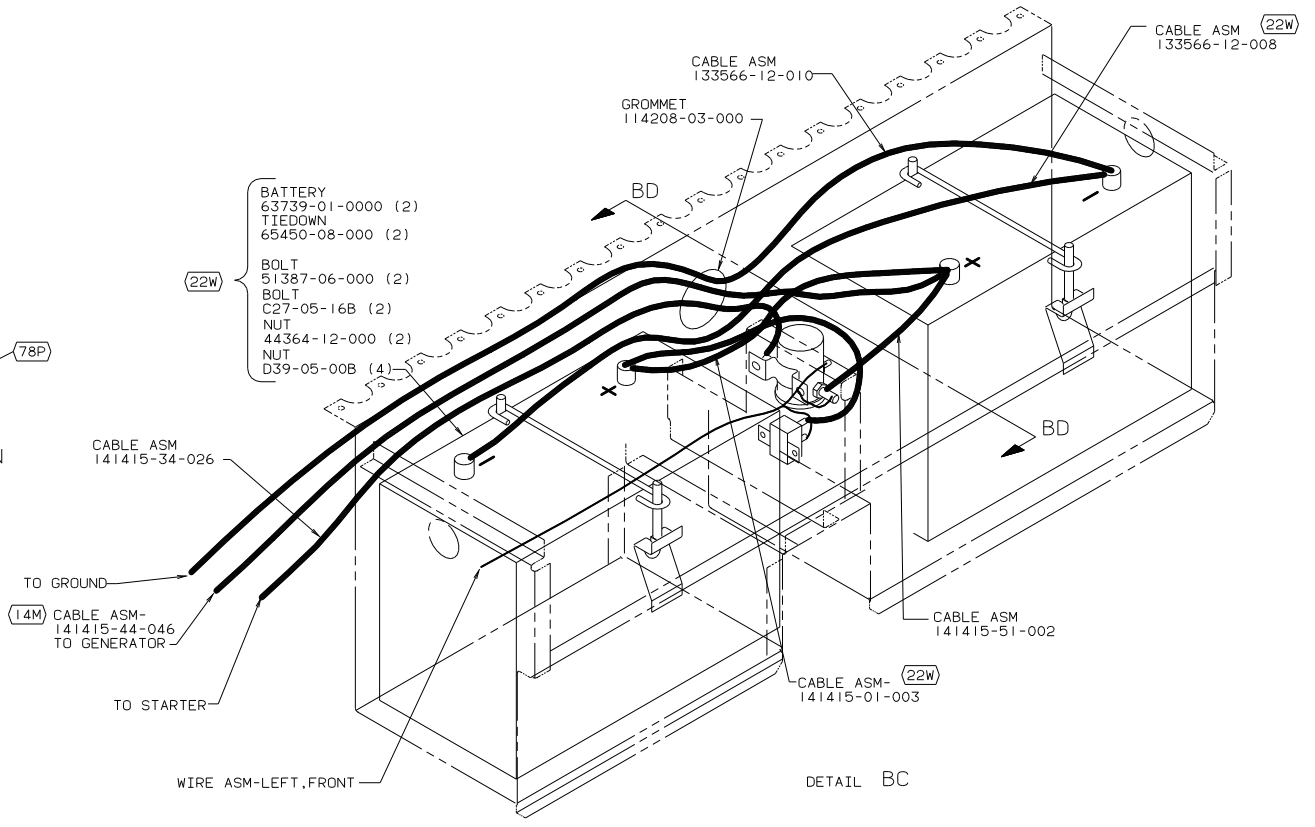
VIEW BD-BD (SHELL ONLY)



VIEW BB-BB



VIEW BD-BD (ALL BUT SHELL)



DETAIL BF

- (78P) A/C AUXILIARY AUTOMOTIVE
- (59N) WINDOW REAR DEFOGGER/DEFROST
- (59F) WINDOW REAR WIPER/WASHER
- (265) CODES/STANDARDS-CSA/CMVSS
- (22W) BATTERY-TWO
- (1B1) CODES STANDARDS/USA
- (14M) GENERATOR-3,000W-GENERAC GAS

(3) SEAL SEAMS AND TOP OF CIRCUIT BREAKER WITH SEALANT 117082-01-000. MINIMIZE CONTACT OF SEALANT WITH ELECTRICALLY CONDUCTIVE SURFACES.

(2) SEE GENERATOR INSTL FOR ADDITIONAL INFORMAITON.

(1) SEE WIRING INSTL-BODY FOR ADDITIONAL INFORMAITON.

NOTES: