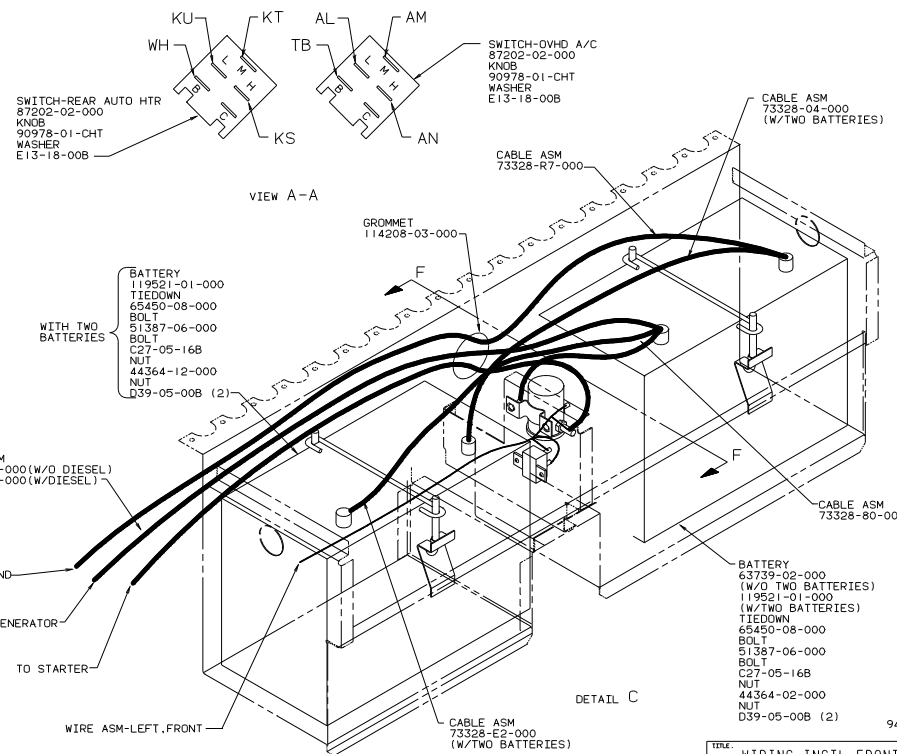
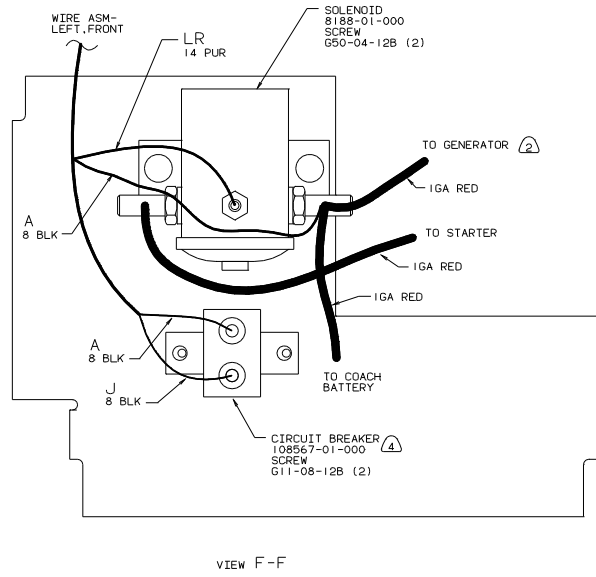
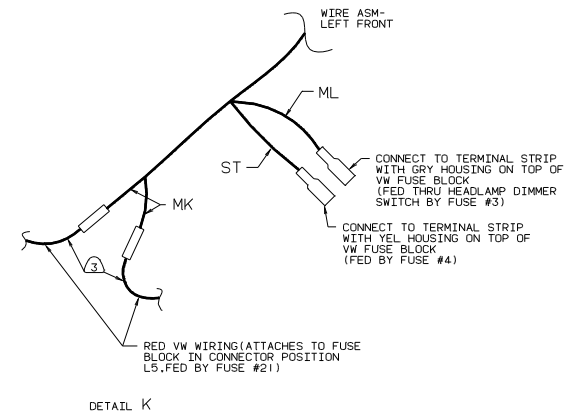
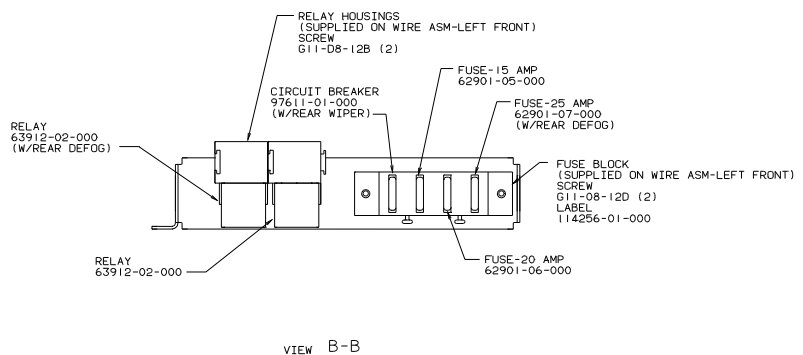


- ③ ROUTE BELOW FLOOR ALONG SAME PATH AS GENERATOR CABLE.
- ⑤ USE PLUG 61420-07-000 TO SEAL HOLE IN VW BULKHEAD.
- ④ MOUNT TO RIGHT SIDE OF STEERING COLUMN SUPPORT.
- ③ ALL WIRES TO BE ROUTED OVER SEAT PEDESTAL.
- ② TO BE USED WITH EXPORT UNITS. CRUISE CONTROL SPEED SENSOR MUST BE TRANSFERRED FROM OLD SPEEDOMETER.
- ① SEE WIRING INSTL-BODY FOR ADDITIONAL INFORMATION.

DETAIL G
TOP VIEW

DETAIL E-E

WINNEBAGO 94 H-SERIES	
DATE	UNSPECIFIED TOLERANCES ARE MATERIAL
CHKD	W/NO DIM. (1)
BY	ONE-PLACE (1, 3)
BY	ONE-PLACE (1, 3)
BY	W/NO DIM.
BY	TRIGO W/NO PROJECTION
DATE	
TITLE: WIRING INSTL-FRONT END	
DRG NO. 112793	



- NOTES:
- ④ SEAL SEAMS AND TOP OF CIRCUIT BREAKER WITH SEALANT 117082-01-000. MINIMIZE CONTACT OF SEALANT WITH ELECTRICALLY CONDUCTIVE SURFACES.
 - ③ CUT WIRE AND RECONNECT AS SHOWN.
 - ② SEE GENERATOR INSTL FOR ADDITIONAL INFORMATIION.
 - ① SEE WIRING INSTL-BODY FOR ADDITIONAL INFORMATIION.