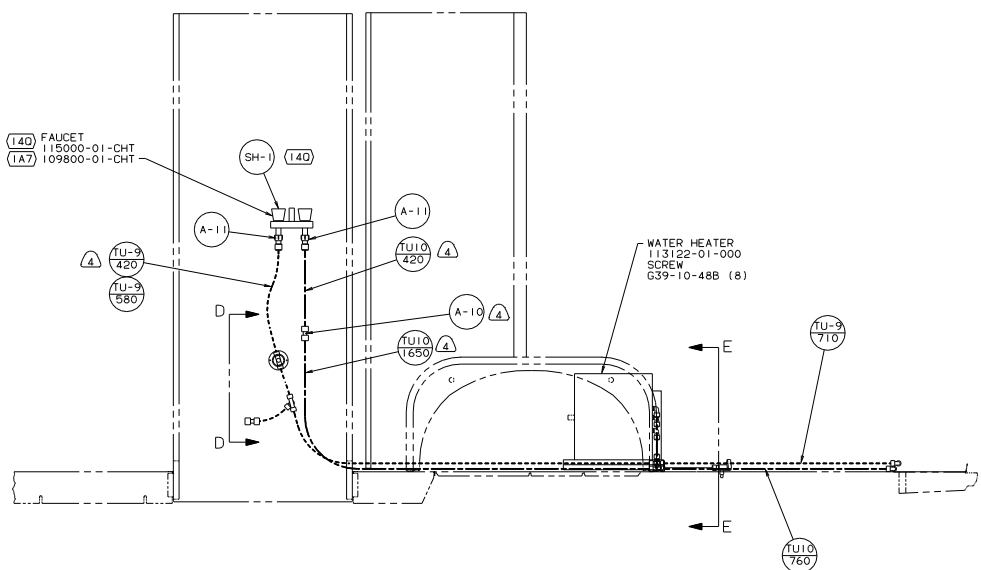


VIEW D-D



- NOTES:
1. PLASTIC FITTINGS TO BE SEALED WITH SEALANT 84456-01-000.
  2. TUBING TO BE INSTALLED WITH SUFFICIENT SLOPE TO PROVIDE DRAINAGE TO NEAREST VALVE.
  3. ALL TUBING TO BE SECURED AT 1200 INTERVALS MAXIMUM WITH CLAMP 10495-01-000 OR CLIP 91951-01-000 AND SCREW G67-10-12B.

6. TRIMARK "KEY ONE" KEY: P/N 138288-01 THRU -10 WATER FILL: P/N 138637-53-000 THRU -009.
5. WRAP WATER LINES WITH INSULATION 105290-01-000 ANY PLACE THEY ARE IN CONTACT WITH MOTOR AID LINES. FASTEN WITH WIRE TIES.

(X-X) FOR WATER CALLOUTS SEE DWG NO. 116230-01-000

LEGEND	
HOT	—————
COLD	- - - - -

- (64R) EXTERIOR WASH STATION
- (1A7) SHOWER PACKAGE-WITHOUT
- (140) SHOWER PACKAGE

**WINNERAGO** 03 22200

DATE	UNSPECIFIED TOLERANCES ARE:	MATERIAL
DATE	WHOLE DIM (IN)	F
DATE	ONE-PLACE (IN.XI)	.
DATE	TWO-PLACE (IN.XXX)	0.005
DATE	ANGLE	1/16
DATE	THIRD-ANGLE PROJECTION	☺

LANE# 22200 TITLE: WATER SYSTEM INSTL

DIA # SCALE: NONE 30 NET SCALE DRAWING 1/16

ALL DIMENSIONS ARE IN MILLIMETERS SHEET 1 OF 2 141140

2 03/31/04 REF: 133334 1 REV G

