

# *SPECIFIC CLIMATE SYSTEMS*

## **RV Division**

### **DEALER'S SERVICE & PARTS MANUAL for WINNEBAGO**

**HEATER/AIR CONDITIONER/DEFROSTER  
COMPONENTS**

**MANUFACTURED BY**

*SPECIFIC CLIMATE SYSTEMS*  
**RV Division**

**TECHNICAL SERVICE**  
1-800-275-7524

**CUSTOMER SERVICE**  
1-800-545-6341

1200 West Risinger Road  
Fort Worth, Texas 76134  
817-293-5313

**LIT. PART NO.**  
057-00272  
February/2002

## TABLE OF CONTENTS

| DESCRIPTION  | SCS / FRIGETTE<br>PART # | WINNEBAGO<br>PART #  | PAGE #      |             |
|--|--------------------------|----------------------|-------------|-------------|
| <b>OPERATING INSTRUCTIONS</b>  |                          |                      | A1 - A4     |             |
| <b>ILLUSTRATED PARTS LIST:</b>   |                          |                      |             |             |
| N-P-F-G-M EVAPORATOR (R12) 1991 - 10/93  | 090-0041                 | 103930-01-000        | B-1         | B-2         |
| N PLENUM / CONTROLS 1991 -1994   | 093-0031                 | 103930-02-000        | B-3         | B-4         |
| P PLENUM / CONTROLS 1991 - 1994  | 093-0036                 | 103930-03-000        | B-3         | B-4         |
| F-G PLENUM / CONTROLS 1991 thru early 1996   | 093-0037                 | 103930-04-000        | B-5         | B-6         |
| M PLENUM / CONTROLS 1993 - 1996  | 093-0045                 | 103930-08-000        | B-7         | B-8         |
| <br>   |                          |                      |             |             |
| DIESEL PUSHER EVAPORATOR (R12) 1993 - 1996   | 090-0048                 | 103930-06-000        | B-9         | B-10        |
| OSHKOSH CHASSIS CONDENSER (R12) 1993 - 1994  | 091-0016                 | 072342-08-000        | B-11        | B-12        |
| OSHKOSH CHASSIS SUCTION HOSE (R12) 1993 - 1994   | 093-0041                 | 103930-07-000        | B-13        | B-14        |
| SPARTAN CHASSIS CONDENSER (R12) 1993 - 1994  | 091-0019                 | 072342-09-000        | B-15        | B-16        |
| SPARTAN CHASSIS SUCTION HOSE (R12) 1993 - 1994   | 093-0048                 | 103930-10-000        | B-17        | B-18        |
| D EVAPORATOR (R12)1993 - early 1994 model year   | 090-0061                 | 110279-01-000        | B-19        | B-20        |
| <br>   |                          |                      |             |             |
| D PLENUM / CONTROLS (THRU MID-MODEL YEAR 1994)   | 093-0049                 | 103930-11-000        | B-21        | B-22        |
| N-P PLENUM / CONTROLS (NEW) (ALSO, D-MODELS, LATE '94)   | 093-0060                 | 103930-09-000        | B-23        | B-24        |
| <br>   |                          |                      |             |             |
| N-P-F-G-M EVAPORATOR, GM CHASSIS (R134-a) 10/93 - 05/94  | 090-0063                 | 103930-12-000        | B-25        | B-26        |
| D EVAPORATOR (R134-a) (THRU MID MODEL YEAR 1994)   | 090-0064                 | 110279-02-000        | B-27        | B-28        |
| DIESEL PUSHER EVAPORATOR (R134-a) 1994 - 1995  | 090-0065                 | 103930-14-000        | B-29        | B-30        |
| <br>   |                          |                      |             |             |
| OSHKOSH CHASSIS CONDENSER (R134-a) 1994 - 1998   | 091-0021                 | 072342-10-000        | B-31        | B-32        |
| OSHKOSH CHASSIS SUCTION HOSE (R134-a) 1995 - 1998  | 093-0075                 | 103930-15-000        | B-33        | B-34        |
| SPARTAN CHASSIS CONDENSER (R134-a) 1995 - 1997   | 091-0022                 | 072342-11-000        | B-35        | B-36        |
| SUCTION HOSE (R134-a), DIESEL MODELS 1995 - 1999   | 093-0074                 | 103930-16-000        | B-37        | B-38        |
| FORD CHASSIS EVAPORATOR (R134-a) 1995  | 090-0074                 | 103930-13-000        | B-39        | B-40        |
| <br>   |                          |                      |             |             |
| GM CHASSIS w/SANDEN COMPRESSOR, HOSE KIT (R134-a) 1993 - 1996  | 093-0076                 | 103930-17-000        | B-41        |             |
| GM CHASSIS w/HARRISON COMPRESSOR, HOSE KIT (R134-a) 1993 - 1996  | 093-0077                 | 103930-18-000        | B-42        |             |
| CONDENSER, Q-BODY (R134-a), (THRU 1998 MODEL YEAR)   | 091-0024                 | 072342-12-000        | B-43        | B-44        |
| <br>   |                          |                      |             |             |
| <b>RIALTA AUXILIARY EVAPORATOR (R134-a) 1995 - CURRENT</b>   | <b>090-0075</b>          | <b>113245-01-000</b> | <b>B-45</b> | <b>B-46</b> |
| FORD VAN CONVERSION REAR EVAPORATOR (R134-a)   | 090-0071                 | 112966-01-000        | B-47        | B-48        |
| EVAPORATOR, GM CHASSIS (R134-a) 05/94 - 1996 model year  | 090-0083                 | 103930-20-000        | B-49        | B-50        |
| EVAPORATOR, FORD CHASSIS (R134-a) 1995 - early 1997  | 090-0084                 | 103930-21-000        | B-51        | B-52        |
| EVAPORATOR, OSHKOSH & SPARTAN CHASSIS (R134-a) 1996 - 1997   | 090-0085                 | 103930-22-000        | B-53        | B-54        |
| EVAPORATOR, 1996 / 1997 (EARLY) GM CHASSIS (R134-a)  | 090-0296                 | 103930-25-000        | B-55        | B-56        |
| <br>   |                          |                      |             |             |
| D, F, & G PLENUM / CONTROLS 1996   | 093-0430                 | 103930-27-000        | B-57        | B-58        |
| M & Q PLENUM / CONTROLS 1996   | 093-0429                 | 103930-26-000        | B-59        | B-60        |
| <br>   |                          |                      |             |             |
| GM CHASSIS w/SELTEC COMPRESSOR HOSE KIT (R134-a) 1996-98   | 093-0426                 | 103930-28-000        | B61         |             |
| GM CHASSIS w/HARRISON COMPRESSOR HOSE KIT (R134-a) 1997-99   | 093-0427                 | 103930-29-000        | B-62        |             |
| <br>   |                          |                      |             |             |
| EVAPORATOR, 1997-99 GM CHASSIS (R134-a) w/MOTOR DRIVEN TEMP CNTRL  | 090-0309                 | 103930-30-000        | B-63        | B-64        |
| EVAPORATOR, 1997-98 FORD CHASSIS (R134-a) w/MOTOR DRIVEN TEMP CNTRL  | 090-0310                 | 103930-31-000        | B-65        | B-66        |
| EVAPORATOR, FREIGHTLINER & SPARTAN CHASSIS (R134-a) w/MOTOR<br>DRIVEN TEMPERATURE CONTROL 1998-99 G & L MODELS | 090-0311                 | 103930-32-000        | B-67        | B-68        |

## TABLE OF CONTENTS

| DESCRIPTION   | SCS / FRIGETTE<br>PART # | WINNEBAGO<br>PART #     | PAGE #      |                                       |       |  |   |                                   |                        |   |     |   |                  |                         |        |                                       |       |  |   |                                   |                        |   |  |  |  |  |  |  |  |  |  |  |
|---|--------------------------|-------------------------|-------------|---------------------------------------|-------|--|---|-----------------------------------|------------------------|---|-----|---|------------------|-------------------------|--------|---------------------------------------|-------|--|---|-----------------------------------|------------------------|---|--|--|--|--|--|--|--|--|--|--|
| <b>ILLUSTRATED PARTS LIST CONTINUED:</b>  |                          |                         |             |                                       |       |  |   |                                   |                        |   |     |   |                  |                         |        |                                       |       |  |   |                                   |                        |   |  |  |  |  |  |  |  |  |  |  |
| PLENUM/CONTROL, w/ROTARY CONTROLS 1997 D MODELS   | 093-0441                 | 103930-33-000           | B-69        | B-70                                  |       |  |   |                                   |                        |   |     |   |                  |                         |        |                                       |       |  |   |                                   |                        |   |  |  |  |  |  |  |  |  |  |  |
| PLENUM/CONTROLS, w/ROTARY CONTROLS 1997 F & G MODELS,<br>1998-2000 EXPORT F-MODEL   | 093-0442                 | 103930-34-000           | B-71        | B-72                                  |       |  |   |                                   |                        |   |     |   |                  |                         |        |                                       |       |  |   |                                   |                        |   |  |  |  |  |  |  |  |  |  |  |
| PLENUM/CONTROLS, w/ROTARY CONTROLS 1997-98 M-MODEL  | 093-0443                 | 103930-35-000           | B-73        | B-74                                  |       |  |   |                                   |                        |   |     |   |                  |                         |        |                                       |       |  |   |                                   |                        |   |  |  |  |  |  |  |  |  |  |  |
| PLENUM/CONTROLS, w/ROTARY CONTROLS 1997-2000 Q-MODEL,<br>2000-2002 P-MODEL  | 093-0444                 | 103930-36-000           | B-75        | B-76                                  |       |  |   |                                   |                        |   |     |   |                  |                         |        |                                       |       |  |   |                                   |                        |   |  |  |  |  |  |  |  |  |  |  |
| PLENUM/CONTROLS, w/PUSH BUTTON CONTROLS<br>EARLY 1997 F & G MODELS  | 093-0445                 | 103930-38-000           | B-77        | B-78                                  |       |  |   |                                   |                        |   |     |   |                  |                         |        |                                       |       |  |   |                                   |                        |   |  |  |  |  |  |  |  |  |  |  |
| <b>AIR CIRCULATION SYSTEM, RIALTA w/OUT DUAL A/C</b>  | <b>090-0317</b>          | <b>113245-02-000</b>    | <b>B-79</b> | <b>B-80</b>                           |       |  |   |                                   |                        |   |     |   |                  |                         |        |                                       |       |  |   |                                   |                        |   |  |  |  |  |  |  |  |  |  |  |
| PLENUM/CONTROLS, w/ROTARY CONTROLS 1999 M-MODEL,<br>1998-2002 F-MODEL (EXCEPT EXPORT MODEL), 1998-2002 L-MODEL,<br>1998-99 G-MODEL (DIESEL), 2002 D-MODEL   | 093-0472                 | 103930-39-000           | B-81        | B-82                                  |       |  |   |                                   |                        |   |     |   |                  |                         |        |                                       |       |  |   |                                   |                        |   |  |  |  |  |  |  |  |  |  |  |
| PLENUM/CONTROLS, w/ROTARY CONTROLS, 1998 F-MODEL (DELUXE),<br>1998-99 G-MODEL (GASOLINE)  | 093-0473                 | 103930-40-000           | B-83        | B-84                                  |       |  |   |                                   |                        |   |     |   |                  |                         |        |                                       |       |  |   |                                   |                        |   |  |  |  |  |  |  |  |  |  |  |
| PLENUM/CONTROLS, w/ROTARY CONTROLS 2000-2002 G-MODEL  | 093-0554                 | 103930-49-000           | B-85        | B-86                                  |       |  |   |                                   |                        |   |     |   |                  |                         |        |                                       |       |  |   |                                   |                        |   |  |  |  |  |  |  |  |  |  |  |
| EVAPORATOR 1999-2002 FORD MODEL, 1999-2002 Q-MODEL,<br>2000-2002 WORKHORSE MODEL, 2000-2002 P & L MODELS  | 093-0383                 | 103930-43-000           | B-87        | B-88                                  |       |  |   |                                   |                        |   |     |   |                  |                         |        |                                       |       |  |   |                                   |                        |   |  |  |  |  |  |  |  |  |  |  |
| CONDENSER 1999 Q-MODEL  | 091-0108                 | 072342-13-000           | B-89        | B-90                                  |       |  |   |                                   |                        |   |     |   |                  |                         |        |                                       |       |  |   |                                   |                        |   |  |  |  |  |  |  |  |  |  |  |
| CONDENSER G & L-MODEL (DIESEL) 1999 "G" Series & 1999 thru early 2000 "L" Series  | 091-0113                 | 072342-14-000           | B-91        | B-92                                  |       |  |   |                                   |                        |   |     |   |                  |                         |        |                                       |       |  |   |                                   |                        |   |  |  |  |  |  |  |  |  |  |  |
| CONDENSER L-MODEL (DIESEL) Late 2000 - 2002   | 091-0121                 | 072342-19-000           | B-93        | B-94                                  |       |  |   |                                   |                        |   |     |   |                  |                         |        |                                       |       |  |   |                                   |                        |   |  |  |  |  |  |  |  |  |  |  |
| CONDENSER 2000-2002 P & Q MODELS  | 091-0123                 | 072342-15-000           | B-95        | B-96                                  |       |  |   |                                   |                        |   |     |   |                  |                         |        |                                       |       |  |   |                                   |                        |   |  |  |  |  |  |  |  |  |  |  |
| DRIER/HOSE KIT 1998-99 M-MODEL  | 093-0505                 | 193930-42-000           | B-97        |                                       |       |  |   |                                   |                        |   |     |   |                  |                         |        |                                       |       |  |   |                                   |                        |   |  |  |  |  |  |  |  |  |  |  |
| HOSE KIT, #6, 1999-2002 FORD MODEL  | 093-0512                 | 103930-44-000           | B-98        |                                       |       |  |   |                                   |                        |   |     |   |                  |                         |        |                                       |       |  |   |                                   |                        |   |  |  |  |  |  |  |  |  |  |  |
| HOSE KIT, #10, 1999-2002 FORD MODEL   | 093-0513                 | 103930-45-000           | B-99        |                                       |       |  |   |                                   |                        |   |     |   |                  |                         |        |                                       |       |  |   |                                   |                        |   |  |  |  |  |  |  |  |  |  |  |
| HOSE KIT, #6, 2000-2002 WORKHORSE MODEL   | 093-0543                 | 103930-47-000           | B-100       |                                       |       |  |   |                                   |                        |   |     |   |                  |                         |        |                                       |       |  |   |                                   |                        |   |  |  |  |  |  |  |  |  |  |  |
| HOSE KIT, #10, 2000-2002 WORKHORSE MODEL  | 093-0542                 | 103930-46-000           | B-101       |                                       |       |  |   |                                   |                        |   |     |   |                  |                         |        |                                       |       |  |   |                                   |                        |   |  |  |  |  |  |  |  |  |  |  |
| HOSE KIT, #6, 2000-2002 L-MODEL (DIESEL)  | 093-0566                 | 072342-21-000           | B-102       |                                       |       |  |   |                                   |                        |   |     |   |                  |                         |        |                                       |       |  |   |                                   |                        |   |  |  |  |  |  |  |  |  |  |  |
| HOSE KIT, #8, 2000-2002 L-MODEL (DIESEL)  | 093-0565                 | 072342-20-000           | B-103       |                                       |       |  |   |                                   |                        |   |     |   |                  |                         |        |                                       |       |  |   |                                   |                        |   |  |  |  |  |  |  |  |  |  |  |
| HOSE KIT, #12 2000-2002 L-MODEL (DIESEL), 2000-2002 P & Q Model w/Cummins Engine,   | 093-0564                 | 103930-51-000           | B-104       |                                       |       |  |   |                                   |                        |   |     |   |                  |                         |        |                                       |       |  |   |                                   |                        |   |  |  |  |  |  |  |  |  |  |  |
| HOSE KIT, #6 2000-2002 P & Q MODELS (Except 2002 Ultimate Freedom w/Cummins Engine)   | 093-0556                 | 072342-18-000           | B-105       |                                       |       |  |   |                                   |                        |   |     |   |                  |                         |        |                                       |       |  |   |                                   |                        |   |  |  |  |  |  |  |  |  |  |  |
| HOSE KIT, #8 2000-2002 P & Q MODELS w/CATERPILLAR ENGINE  | 093-0558                 | 072342-16-000           | B-106       |                                       |       |  |   |                                   |                        |   |     |   |                  |                         |        |                                       |       |  |   |                                   |                        |   |  |  |  |  |  |  |  |  |  |  |
| HOSE KIT, #8 2000-2002 P MODELS w/CUMMINS ENGINE,<br>2000-2001 Q MODEL w/CUMMINS ENGINE   | 093-0568                 | 072342-17-000           | B-107       |                                       |       |  |   |                                   |                        |   |     |   |                  |                         |        |                                       |       |  |   |                                   |                        |   |  |  |  |  |  |  |  |  |  |  |
| HOSE KIT, #12 2000-2002 P & Q MODELS w/CATERPILLAR ENGINE   | 093-0506                 | 103930-41-000           | B-108       |                                       |       |  |   |                                   |                        |   |     |   |                  |                         |        |                                       |       |  |   |                                   |                        |   |  |  |  |  |  |  |  |  |  |  |
| PLENUM/CONTROLS KIT, 2001-2002 Q MODELS   | 093-0587                 | 103930-52-000           | B-109       | B110                                  |       |  |   |                                   |                        |   |     |   |                  |                         |        |                                       |       |  |   |                                   |                        |   |  |  |  |  |  |  |  |  |  |  |
| HOSE KIT, #6 2002 ULTIMATE FREEDOM w/CUMMINS ENGINE   | 093-0612                 | 072342-23-000           | B-111       |                                       |       |  |   |                                   |                        |   |     |   |                  |                         |        |                                       |       |  |   |                                   |                        |   |  |  |  |  |  |  |  |  |  |  |
| HOSE KIT, #8 2002 ULTIMATE FREEDOM w/CUMMINS ENGINE   | 093-0613                 | 072342-22-000           | B112        |                                       |       |  |   |                                   |                        |   |     |   |                  |                         |        |                                       |       |  |   |                                   |                        |   |  |  |  |  |  |  |  |  |  |  |
| PLENUM/CONTROLS KIT, 2002 "L"-SERIES  | 093-0620                 | 103930-53-000           | B113        | B114                                  |       |  |   |                                   |                        |   |     |   |                  |                         |        |                                       |       |  |   |                                   |                        |   |  |  |  |  |  |  |  |  |  |  |
| WIRING & VACUUM DIAGRAM _____   |                          |                         | C-1         | C-4                                   |       |  |   |                                   |                        |   |     |   |                  |                         |        |                                       |       |  |   |                                   |                        |   |  |  |  |  |  |  |  |  |  |  |
| ORIGIN OF COMPONENTS AND WARRANTY RESPONSIBILITY _____  |                          |                         | C-5         |                                       |       |  |   |                                   |                        |   |     |   |                  |                         |        |                                       |       |  |   |                                   |                        |   |  |  |  |  |  |  |  |  |  |  |
| REFRIGERANT CHARGE INFORMATION _____  |                          |                         | C-5         |                                       |       |  |   |                                   |                        |   |     |   |                  |                         |        |                                       |       |  |   |                                   |                        |   |  |  |  |  |  |  |  |  |  |  |
| TROUBLESHOOTING GUIDE _____   |                          |                         | C-6         |                                       |       |  |   |                                   |                        |   |     |   |                  |                         |        |                                       |       |  |   |                                   |                        |   |  |  |  |  |  |  |  |  |  |  |
| SCS / FRIGETTE SERVICE CENTER LISTING _____   |                          |                         | D-1 - D-10  |                                       |       |  |   |                                   |                        |   |     |   |                  |                         |        |                                       |       |  |   |                                   |                        |   |  |  |  |  |  |  |  |  |  |  |
| <table border="1" style="width: 100%; border-collapse: collapse; font-size: small;"> <tr> <td style="width: 8%;">"D"</td> <td style="width: 8%;">"F"</td> <td style="width: 8%;">"G"</td> <td style="width: 8%;">"H"</td> <td style="width: 8%;">"L"</td> <td style="width: 8%;">"M"</td> <td style="width: 8%;">"N"</td> <td style="width: 8%;">"P"</td> <td style="width: 8%;">"P"</td> <td style="width: 8%;">"Q"</td> <td style="width: 8%;">"Q"</td> </tr> <tr> <td>97 &amp; Earlier<br/>WARRIOR<br/>PASSAGE<br/>2002<br/>Sightseer<br/>Sunova</td> <td>BRAVE<br/>SUNRISE</td> <td>ADVENTURE<br/>SUNCRUISER</td> <td>RIALTA</td> <td>(98 &amp; LATER)<br/>CHIEFTAIN<br/>SUNFLYER</td> <td>VETRA</td> <td>(PRIOR TO 98)<br/>CHIEFTAIN<br/>SUNFLYER</td> <td>(PRIOR TO 98)<br/>ELANDAN<br/>WINDCRUISER<br/>ELANTE</td> <td>(2000-2002)<br/>HORIZON<br/>JOURNEY</td> <td>(PRIOR TO 99)<br/>LUXOR</td> <td>(1999-2002)<br/>ULTIMATE<br/>ADVANTAGE<br/>&amp; ULTIMATE<br/>FREEDOM</td> </tr> </table> | "D"                      | "F"                     | "G"         | "H"                                   | "L"   | "M"                                    | "N"   | "P"                               | "P"                    | "Q"   | "Q" | 97 & Earlier<br>WARRIOR<br>PASSAGE<br>2002<br>Sightseer<br>Sunova | BRAVE<br>SUNRISE | ADVENTURE<br>SUNCRUISER | RIALTA | (98 & LATER)<br>CHIEFTAIN<br>SUNFLYER | VETRA | (PRIOR TO 98)<br>CHIEFTAIN<br>SUNFLYER | (PRIOR TO 98)<br>ELANDAN<br>WINDCRUISER<br>ELANTE | (2000-2002)<br>HORIZON<br>JOURNEY | (PRIOR TO 99)<br>LUXOR | (1999-2002)<br>ULTIMATE<br>ADVANTAGE<br>& ULTIMATE<br>FREEDOM |  |  |  |  |  |  |  |  |  |  |
| "D"   | "F"                      | "G"                     | "H"         | "L"                                   | "M"   | "N"                                    | "P"   | "P"                               | "Q"                    | "Q"   |     |   |                  |                         |        |                                       |       |  |   |                                   |                        |   |  |  |  |  |  |  |  |  |  |  |
| 97 & Earlier<br>WARRIOR<br>PASSAGE<br>2002<br>Sightseer<br>Sunova   | BRAVE<br>SUNRISE         | ADVENTURE<br>SUNCRUISER | RIALTA      | (98 & LATER)<br>CHIEFTAIN<br>SUNFLYER | VETRA | (PRIOR TO 98)<br>CHIEFTAIN<br>SUNFLYER | (PRIOR TO 98)<br>ELANDAN<br>WINDCRUISER<br>ELANTE | (2000-2002)<br>HORIZON<br>JOURNEY | (PRIOR TO 99)<br>LUXOR | (1999-2002)<br>ULTIMATE<br>ADVANTAGE<br>& ULTIMATE<br>FREEDOM |     |   |                  |                         |        |                                       |       |  |   |                                   |                        |   |  |  |  |  |  |  |  |  |  |  |

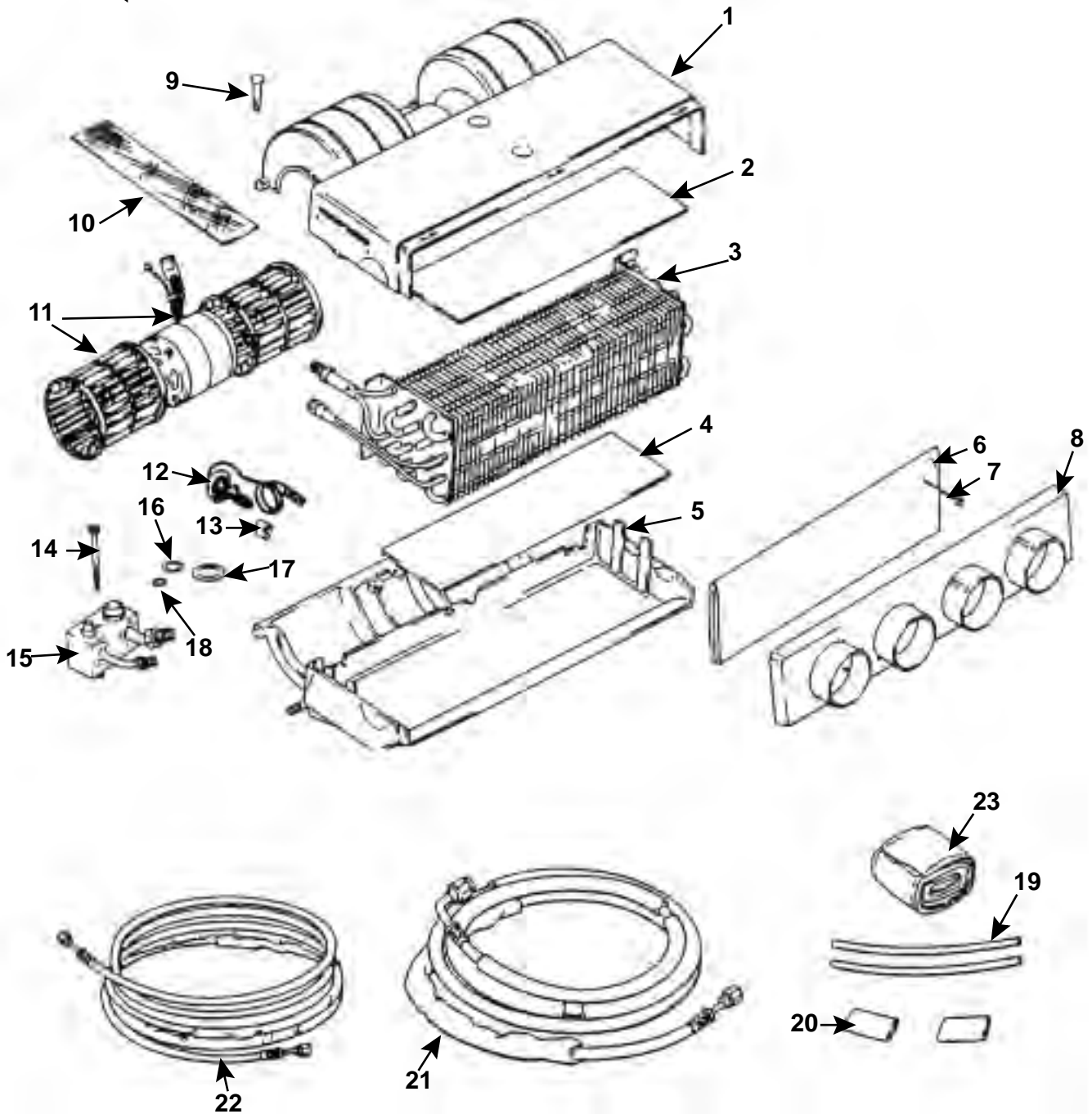
**EVAPORATOR ASSEMBLY (R134-a)  
SCS/FRIGETTE #090-0075  
WINNEBAGO #113245-01-000,  
H-BODY AUXILIARY SYSTEM (V-W CHASSIS)**

| ITEM NO. | WINNEBAGO PART NO. | SCS/FRIGETTE PART NO. | DESCRIPTION                          | QTY   |
|----------|--------------------|-----------------------|--------------------------------------|-------|
| 1        | 113245-01-717      | 062-0139              | Top, Case                            | 1 ea. |
| 2        |                    | 045-0023              | Insulation, Case Top                 | 1 ea. |
| 3        | 113245-01-705      | 041-0034              | Coil, Evaporator                     | 1 ea. |
| 4        |                    | 045-0156              | Insulation, Case Bottom              | 1 ea. |
| 5        | 113245-01-716      | 062-0604              | Bottom, Case                         | 1 ea. |
| 6        | 113245-01-713      | 045-0173              | Screen, Condensation                 | 1 ea. |
| 7        | 113245-01-714      | 062-0164              | Pin, Retainer, Screen                | 6 ea. |
| 8        | 113245-01-703      | 062-0142              | Outlet, Case                         | 1 ea. |
| 9        | 113245-01-701      | 062-0027              | Snap-Pin, Case                       | 6 ea. |
| 10       |                    | 045-0155              | Cushion, Motor Wrap                  | 1 ea. |
| 11       | 113245-01-719      | 083-0236              | Blower Motor & Wheels, Balanced Assy | 1 ea. |
| 12       | 113245-01-706      | 034-0026              | Valve, Expansion                     | 1 ea. |
| 13       |                    | 022-0007              | Clamp, Bulb                          | 1 ea. |
| 14       |                    | 020-0020              | Bolt, 6MM x 55MM                     | 2 ea. |
| 15       | 113245-01-712      | 050-0769              | Fitting                              | 1 ea. |
| 16       | 103930-17-702      | 045-0127              | Gasket, O-Ring, #10                  | 2 ea. |
| 17       | 113245-01-710      | 045-0128              | Gasket, O-Ring, #12                  | 2 ea. |
| 18       | 113245-01-711      | 045-0129              | Gasket, O-Ring, #6                   | 4 ea. |
| 19       | 113245-01-718      | 051-0002              | Hose, Drain, 1/2" x 6"               | 2 ea. |
| 20       | 113245-01-720      | 051-0093              | Hose, Kazoo, 1" x 2"                 | 2 ea. |
| 21       | 113245-01-709      | 085-0116              | Hose, #10                            | 1 ea. |
| 22       | 113245-01-708      | 085-0115              | Hose, #6                             | 1 ea. |
| 23       |                    | 045-0009              | Insulation, Cork/Tar                 | 3 ft. |

**PARTS ILLUSTRATION ON NEXT PAGE** 

**EVAPORATOR ASSEMBLY (R134-a)  
SCS/FRIGETTE #090-0075  
WINNEBAGO #113245-01-000,  
H-BODY AUXILIARY SYSTEM (V-W CHASSIS)**

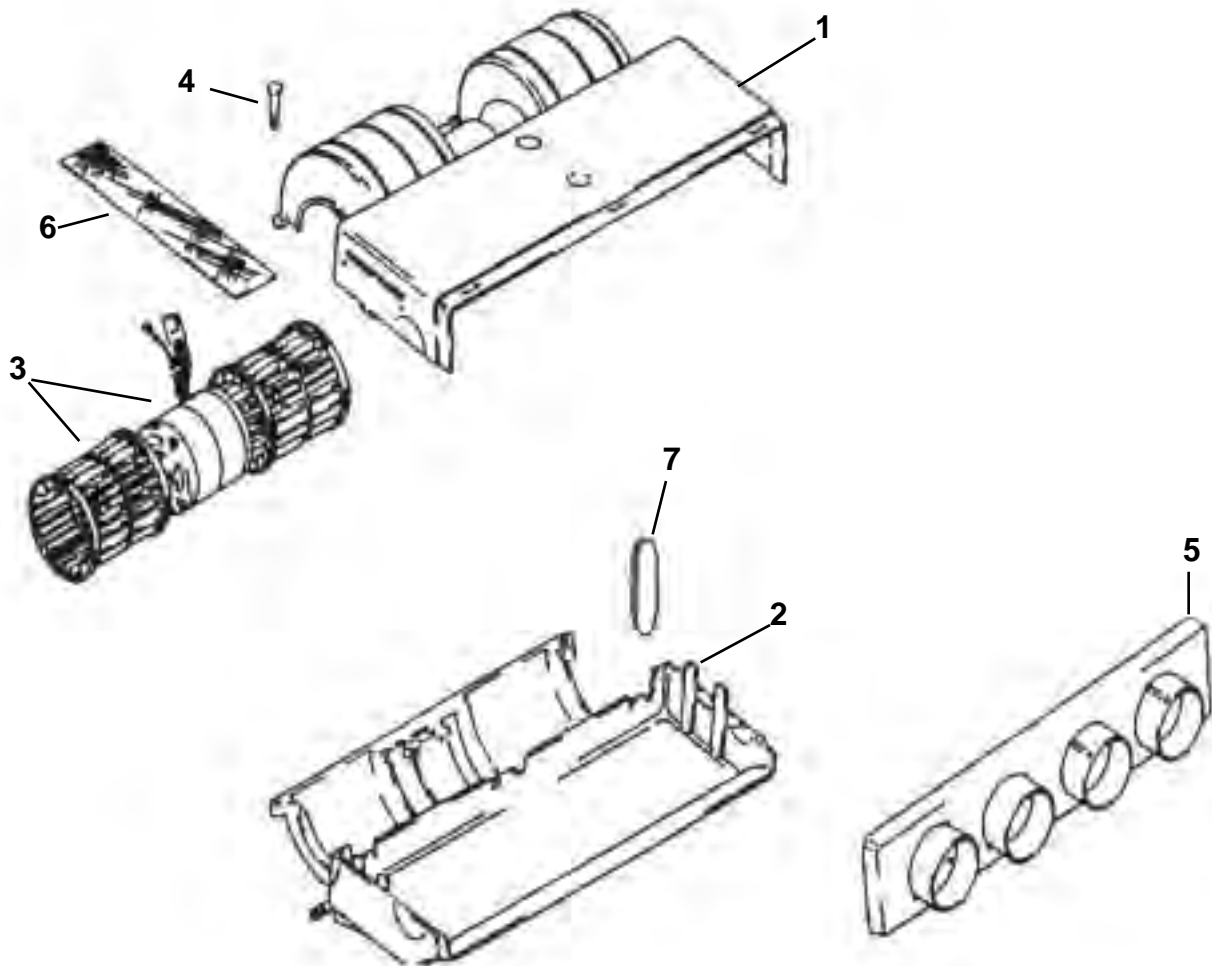
← **PARTS LIST ON PREVIOUS PAGE**



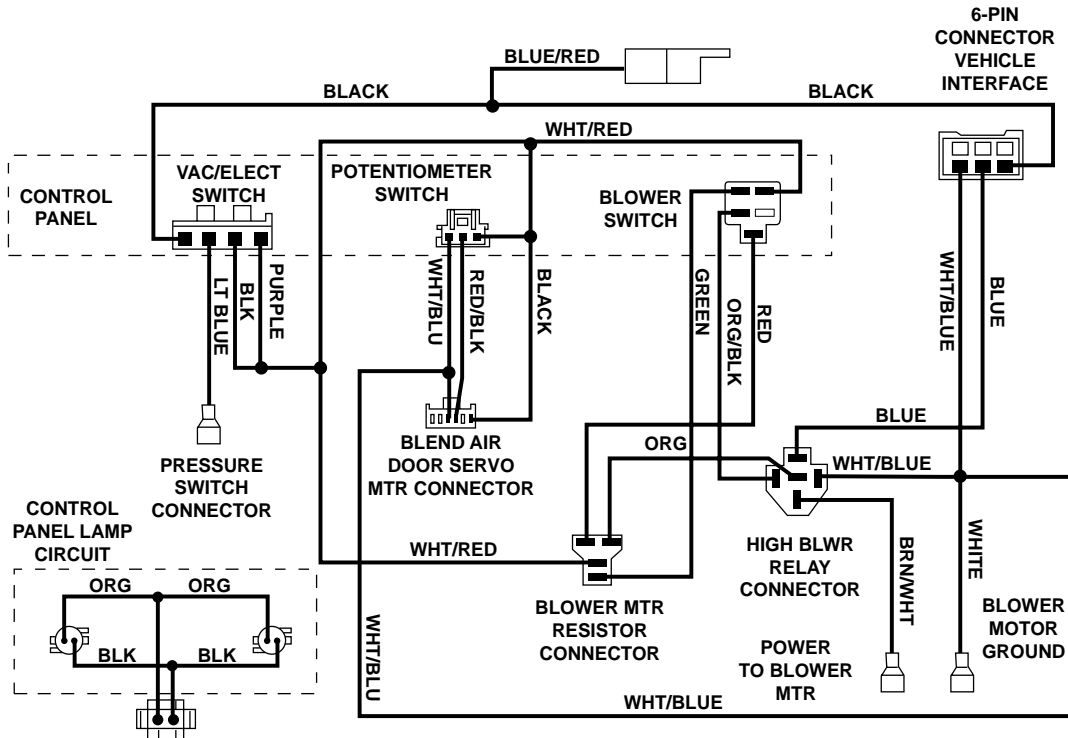
**AIR CIRCULATION SYSTEM  
SCS/FRIGETTE #090-0317  
WINNEBAGO #113245-02-000,  
WINNEBAGO H**

| ITEM NO. | WINNEBAGO PART NO. | SCS/FRIGETTE PART NO. | DESCRIPTION                         | QTY      |
|----------|--------------------|-----------------------|-------------------------------------|----------|
| 1        | 113245-01-717      | 062-0139              | Case, Top                           | 1 ea.    |
| 2        | 113245-02-700      | 062-0140              | Case, Bottom                        | 1 ea.    |
| 3        | 113245-01-719      | 083-0236              | Blower Motor & Wheel Assy. Balanced | 1 ea.    |
| 4        | 113245-01-701      | 062-0027              | Pin                                 | 6 ea.    |
| 5        | 113245-01-703      | 062-0142              | Outlet, Adapter                     | 1 ea.    |
| 6        |                    | 045-0155              | Motor Cushion                       | .785 Ft. |
| 7        |                    | 062-0541              | Plug, Case                          | 2 ea.    |

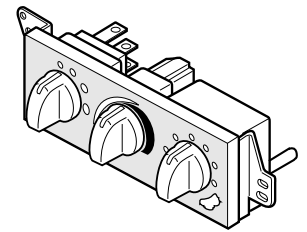
**AIR CIRCULATION SYSTEM  
SCS/FRIGETTE #090-0317  
WINNEBAGO #113245-02-000,  
WINNEBAGO H**



# VACUUM & ELECTRICAL DIAGRAMS FOR CLASS-A MOTORHOMES WITH ROTARY CONTROLS

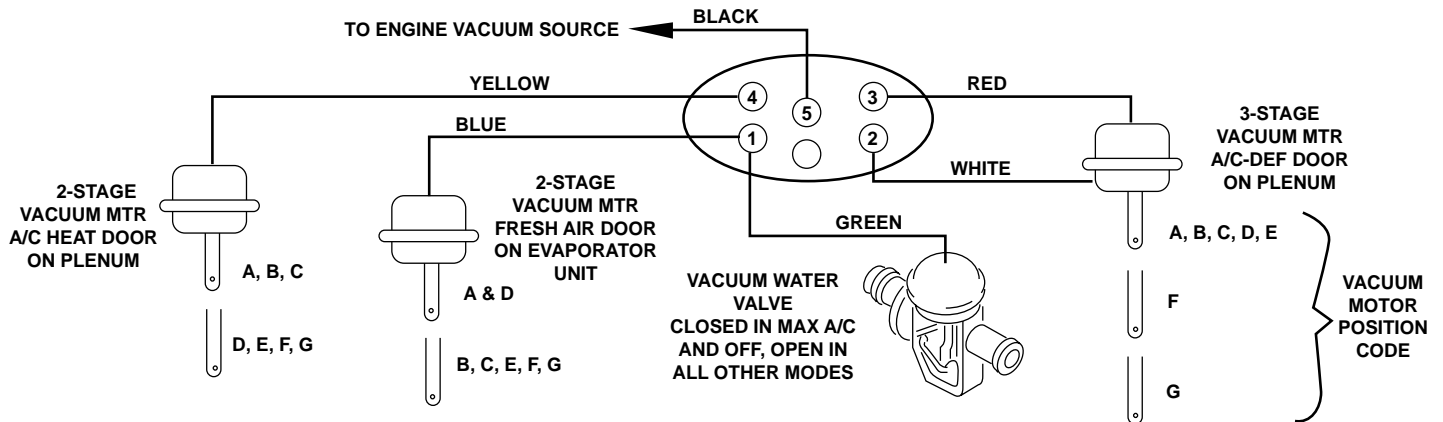


| SCS/FRIGETTE KIT # | WINNEBAGO P/N |
|--------------------|---------------|
| 093-0441           | 103930-33-000 |
| 093-0442           | 103930-34-000 |
| 093-0443           | 103930-35-000 |
| 093-0444           | 103930-36-000 |



**NOTE: ELECTRICAL CONNECTORS ARE ILLUSTRATED FROM THE WIRE INSERTION SIDE**

## VACUUM CONNECTOR AT VACUUM ELECTRIC SWITCH (WITH VACUUM PORT NUMBER CODES)

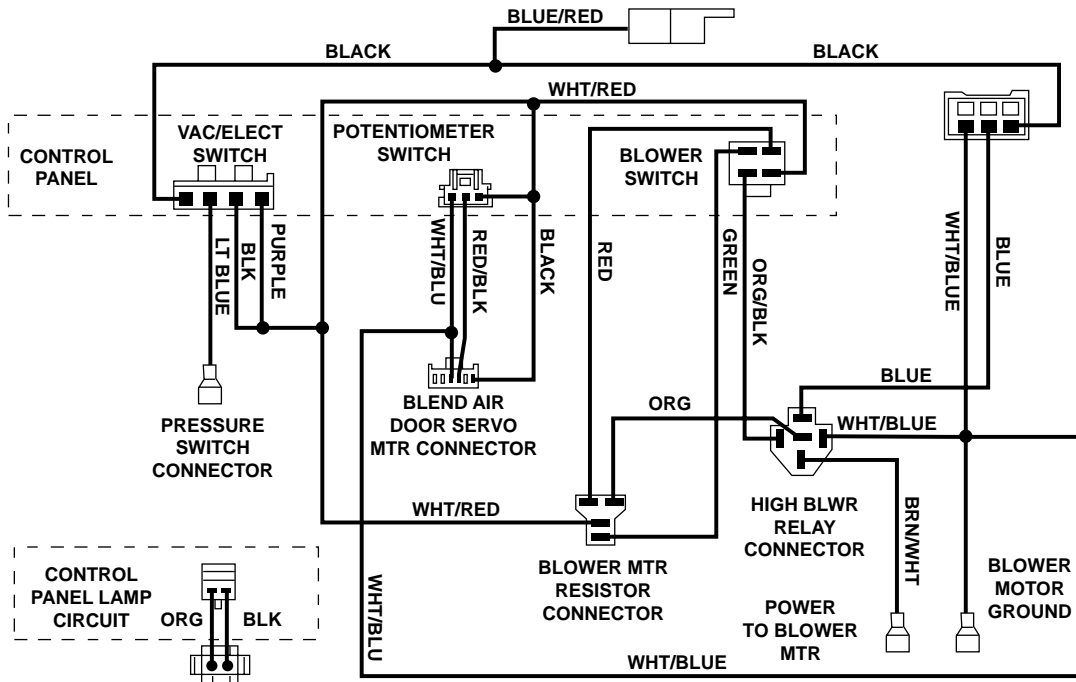


|          |                            | VACUUM PORT NUMBER CODE |   |   |   |   |
|----------|----------------------------|-------------------------|---|---|---|---|
| MODE     | VACUUM MOTOR POSITION CODE | 5                       | 3 | 2 | 1 | 4 |
| MAX A/C  | A                          | ●                       | ● | ● | ● | ● |
| NORM A/C | B                          | ●                       | ● | ● | ○ | ● |
| VENT     | C                          | ●                       | ● | ● | ○ | ● |
| OFF      | D                          | ●                       | ● | ● | ● | ○ |
| FLOOR    | E                          | ●                       | ● | ● | ○ | ○ |
| MIX      | F                          | ●                       | ● | ○ | ○ | ○ |
| DEF      | G                          | ●                       | ○ | ○ | ○ | ○ |

● WITH VACCUM      ○ WITHOUT VACCUM

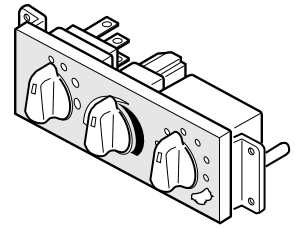


# VACUUM & ELECTRICAL DIAGRAMS FOR CLASS-A MOTORHOMES WITH ROTARY CONTROLS



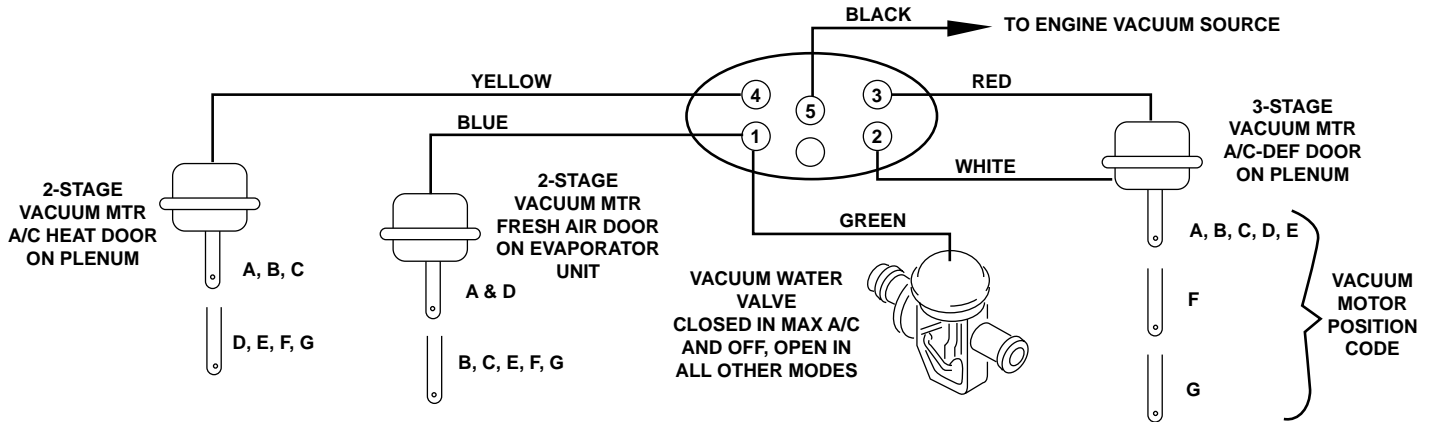
6-PIN  
CONNECTOR  
VEHICLE  
INTERFACE

|  |                  |
|--|------------------|
| SCS/FRIGETTE<br>KIT #                  | WINNEBAGO<br>P/N |
| 093-0554                               | 103930-49-000    |
| (EARLY PRODUCTION<br>w/RECESSED KNOBS) |                  |



**NOTE: ELECTRICAL CONNECTORS ARE ILLUSTRATED FROM THE WIRE INSERTION SIDE**

## VACUUM CONNECTOR AT VACUUM ELECTRIC SWITCH (WITH VACUUM PORT NUMBER CODES)

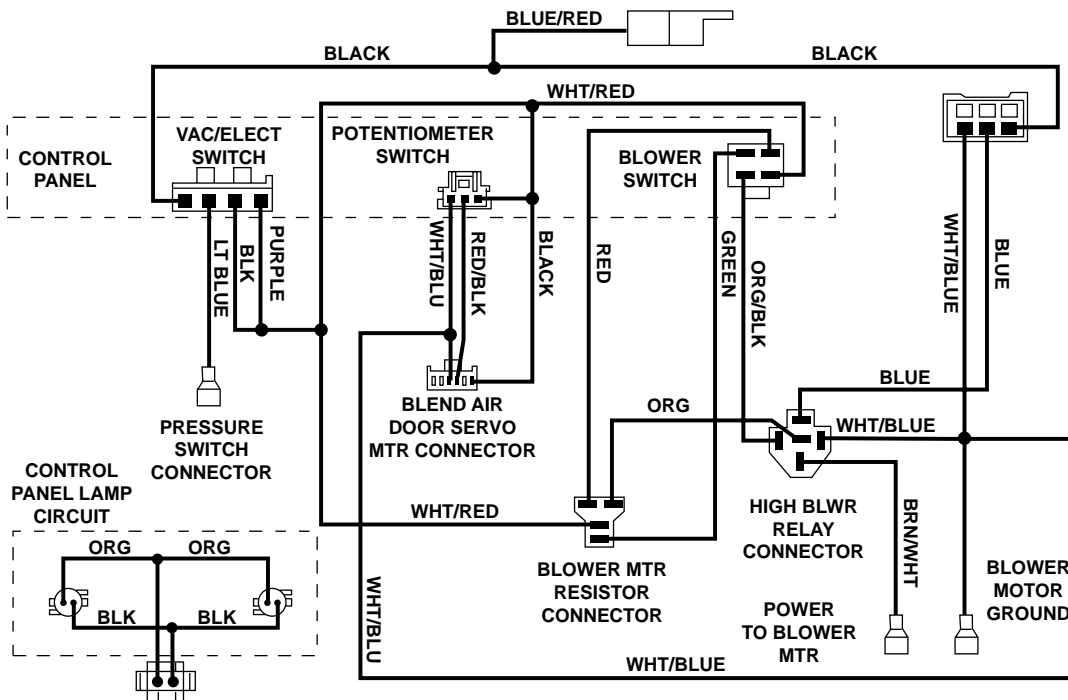


| MODE     | VACUUM MOTOR POSITION CODE | VACUUM PORT NUMBER CODE |   |   |   |   |
|----------|----------------------------|-------------------------|---|---|---|---|
|          |                            | 5                       | 3 | 2 | 1 | 4 |
| MAX A/C  | A                          | ●                       | ● | ● | ● | ● |
| NORM A/C | B                          | ●                       | ● | ● | ○ | ● |
| VENT     | C                          | ●                       | ● | ● | ○ | ● |
| OFF      | D                          | ●                       | ● | ● | ● | ○ |
| FLOOR    | E                          | ●                       | ● | ● | ○ | ○ |
| MIX      | F                          | ●                       | ● | ○ | ○ | ○ |
| DEF      | G                          | ●                       | ○ | ○ | ○ | ○ |

● WITH VACCUUM

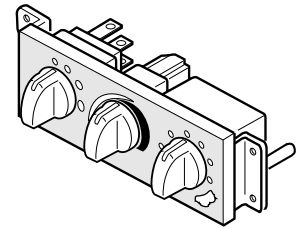
○ WITHOUT VACCUUM

# VACUUM & ELECTRICAL DIAGRAMS FOR CLASS-A MOTORHOMES WITH ROTARY CONTROLS



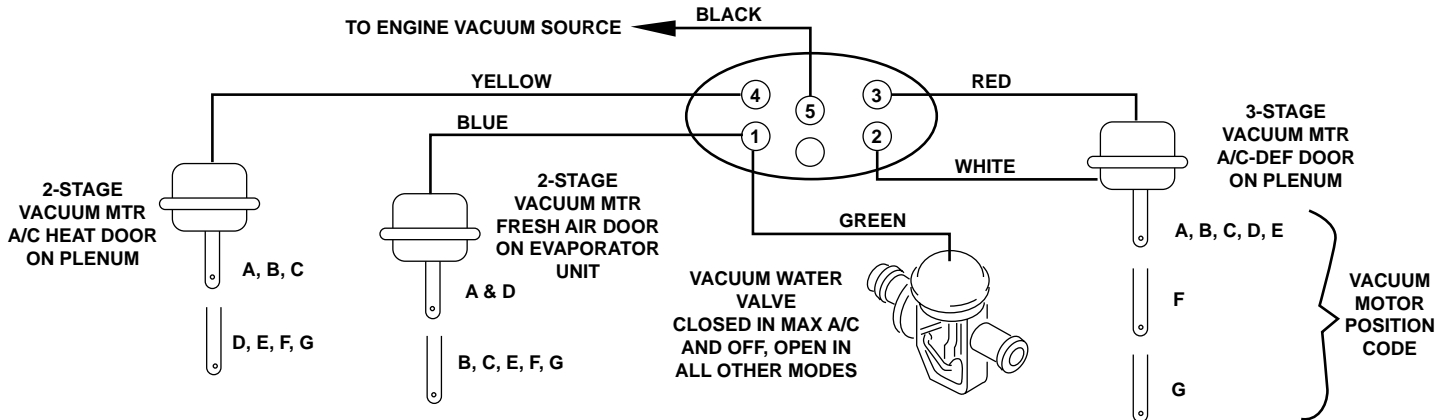
6-PIN  
CONNECTOR  
VEHICLE  
INTERFACE

|                       |                  |
|-----------------------|------------------|
| SCS/FRIGETTE<br>KIT # | WINNEBAGO<br>P/N |
| 093-0554              | 103930-49-000    |
| (CURRENT PRODUCTION)  |                  |



**NOTE: ELECTRICAL CONNECTORS ARE ILLUSTRATED FROM THE WIRE INSERTION SIDE**

## VACUUM CONNECTOR AT VACUUM ELECTRIC SWITCH (WITH VACUUM PORT NUMBER CODES)



| MODE     | VACUUM MOTOR POSITION CODE | VACUUM PORT NUMBER CODE |   |   |   |   |
|----------|----------------------------|-------------------------|---|---|---|---|
|          |                            | 5                       | 3 | 2 | 1 | 4 |
| MAX A/C  | A                          | ●                       | ● | ● | ● | ● |
| NORM A/C | B                          | ●                       | ● | ● | ○ | ● |
| VENT     | C                          | ●                       | ● | ● | ○ | ● |
| OFF      | D                          | ●                       | ● | ● | ● | ○ |
| FLOOR    | E                          | ●                       | ● | ● | ○ | ○ |
| MIX      | F                          | ●                       | ● | ○ | ○ | ○ |
| DEF      | G                          | ●                       | ○ | ○ | ○ | ○ |

● WITH VACCUUM

○ WITHOUT VACCUUM

# ORIGIN OF COMPONENTS & WARRANTY RESPONSIBILITY

SCS/FRIGETTE manufactures components (not complete systems) for Winnebago air conditioners. Depending on the chassis manufacturer and type of vehicle, the percentage of SCS/FRIGETTE's content can vary. Proper identity of the components manufacturer is essential for satisfactory sourcing of replacement parts and warranty responsibility.

In order to facilitate the identification of the components, the following information is provided:

## A/C-HEAT - DEF COMPONENTS

| CHASSIS MFG              | A/C, HEAT, DEF UNIT, PLENUM, AND CONTROLS | LIQUID AND SUCTION HOSES | CONDENSER    | CONDENSER FAN | DISCHARGE HOSE | RECEIVER/ DRIER | COMPRESSOR AND MOUNT/DRIVE |
|--------------------------|---|--------------------------|--------------|---------------|----------------|-----------------|----------------------------|
| WORKHORSE                | SCS/FRIGETTE                              | SCS/FRIGETTE             | WORKHORSE    | WORKHORSE     | WORKHORSE      | WORKHORSE       | WORKHORSE                  |
| GM 1998-99 P32 CHASSIS   | SCS/FRIGETTE                              | SCS/FRIGETTE             | GM           | GM            | GM             | GM              | GM                         |
| GM 1998-99 P12 CHASSIS   | SCS/FRIGETTE                              | SCS/FRIGETTE             | GM           | --            | GM             | SCS/FRIGETTE    | GM                         |
| GM Gas & Diesel 1994-97  | SCS/FRIGETTE                              | SCS/FRIGETTE             | GM           | GM            | GM             | GM              | GM                         |
| GM Gas 1993 & Earlier    | SCS/FRIGETTE                              | SCS/FRIGETTE             | GM           | GM            | GM             | GM              | GM                         |
| GM Diesel 1993 & Earlier | SCS/FRIGETTE                              | SCS/FRIGETTE             | SCS/FRIGETTE | SCS/FRIGETTE  | SCS/FRIGETTE   | SCS/FRIGETTE    | SCS/FRIGETTE               |
| Ford                     | SCS/FRIGETTE                              | SCS/FRIGETTE             | FORD         |               | FORD           | FORD            | FORD                       |
| Oshkosh                  | SCS/FRIGETTE                              | SCS/FRIGETTE             | SCS/FRIGETTE | SCS/FRIGETTE  | SCS/FRIGETTE   | SCS/FRIGETTE    | OSHKOSH                    |
| Freight liner            | SCS/FRIGETTE                              | SCS/FRIGETTE             | SCS/FRIGETTE | SCS/FRIGETTE  | SCS/FRIGETTE   | SCS/FRIGETTE    | FREIGHTLINER               |
| Spartan                  | SCS/FRIGETTE                              | SCS/FRIGETTE             | SCS/FRIGETTE | SCS/FRIGETTE  | SCS/FRIGETTE   | SCS/FRIGETTE    | SPARTAN                    |
| Ford 1994 Van Conversion | SCS/FRIGETTE Note 1                       | SCS/FRIGETTE Note 1      | FORD         |               | FORD           | FORD            | FORD                       |
| VW H-Body                | SCS/FRIGETTE Note 2                       | SCS/FRIGETTE Note 2      | VW           | VW            | VW             | VW              | VW                         |

Note 1 Rear, Under floor Heat/Cool Unit. Short refrigerant hoses to connect with Ford A/C - Prep Package.

Note 2 Overhead Auxiliary 134-a A/C System, Suction and discharge hoses provided to connect (near front system expansion valve) to VW front unit.

## REFRIGERANT CHANGE INFORMATION (R134-a)

R134-a systems must be charged with a predetermined amount of refrigerant; the sight-glass CANNOT be used for accurate charging information. The following chart provides total system requirements:

|                  |               |                |               |                     |               |                                 |               |
|------------------|---------------|----------------|---------------|---------------------|---------------|---------------------------------|---------------|
| <b>WORKHORSE</b> | <b>32 oz.</b> | <b>FORD</b>    | <b>32 oz.</b> | <b>FREIGHTLINER</b> | <b>40 oz.</b> | <b>VW H-BODY</b>                | <b>48 oz.</b> |
| <b>GM</b>        | <b>32 oz.</b> | <b>OSHKOSH</b> | <b>40 oz.</b> | <b>SPARTAN</b>      | <b>40 oz.</b> | <b>1994 FORD VAN CONVERSION</b> | <b>66 oz.</b> |

# DIAGNOSING ABNORMAL OPERATING CONDITIONS

**NOTE:** Wherever this symbol (\*) appears in **REMEDY** column it automatically indicates that all refrigerant be removed, a new receiver-drier be installed, the system be evacuated with a vacuum pump and charged with new refrigerant.

| CONDITION  | INDICATES   | REMEDY  |
|--|---|---|
| A. Suction pressure above normal. Discharge pressure too high.   | 1. Air in system<br><b>OR</b><br>2. Overcharge of refrigerant<br><b>OR</b><br>3. Dirty or plugged condensers.   | 1. Remove refrigerant charge (vacuum pump), recharge system and replace receiver drier. *<br>2. Remove some refrigerant to bring pressure to normal.<br>3. Clean bugs and dirt from condenser coil.                   |
| B. Suction pressure low. Discharge pressure low or normal.   | 1. Low refrigerant charge.  | 1. Determine cause of loss of refrigerant. Remove refrigerant and repair leak in system. *  |
| C. Suction line frosted or sweating. Suction pressure too high. Discharge pressure too low.                    | 1. Expansion valve stuck open<br><b>OR</b><br>2. Feeler bulb not making proper contact with suction line.<br>3. Defective reed valves in compressor           | 1. Replace expansion valve. *<br>2. Clean suction line surface and reinstall feeler bulb so it makes good contact.<br>3. Repair or replace compressor. *  |
| D. Erratic Operation, suction pressure may drop into vacuum. Suction pressure low. Discharge pressure too low. | 1. Expansion valve stuck close<br><b>OR</b><br>2. Moisture in system freezing at expansion valve.<br><b>OR</b><br>3. Expansion valve feeler bulb lost charge. | 1. Check expansion valve for proper operation<br>2. Remove refrigerant charge (vacuum pump), recharge system and replace receiver drier. *<br><b>DO NOT</b> replace expansion valve.<br>3. Replace expansion valve. * |
| E. Compressor sweats or frosts.  | 1. Expansion valve stuck open.  | 1. Replace expansion valve. *   |
| F. Suction line too cool or sweating.  | 1. Expansion valve stuck open.  | 1. Replace expansion valve. *   |
| G. compressor belts slip at idle speed.  | 1. Overcharge of refrigerant<br><b>OR</b><br>2. Condenser dirty<br>3. Belt loose  | 1. Remove excess refrigerant.<br>2. Clean condenser coil,<br>3. Adjust belt.  |
| H. Frosting or cold spots on refrigerant lines or hoses.   | 1. Indicates restriction or plugged condition.  | 1. Remove restriction or replace component. *   |
| I. Condenser warm at top, cool at bottom.  | 1. Expansion valve closed or restriction in high side.  | 1. Remove restriction or replace.   |
| J. Expansion valve frosted and coil warm.  | 1. Moisture freezing at expansion valve.  | 1. Remove refrigerant. *  |

## LOUVER TEMPERATURE vs RELATIVE HUMIDITY

THE CHART TO THE RIGHT ILLUSTRATES THE EFFECTS OF HUMIDITY ON A/C PERFORMANCE. LISTED ARE THE LOUVER TEMPERATURES THAT CAN BE EXPECTED FOR CLASS A MOTOR HOMES. TO PERFORM A CHECK OF LOUVER TEMPERATURES, PLACE THE SYSTEM'S CONTROLS IN "NORMAL A/C" (ROTARY CONTROLS OR "AC" (PUSH BUTTON CONTROLS). MEASURE THE TEMPERATURE ENTERING THE COIL THRU THE FRESH AIR INLET; THIS WILL BE THE AMBIENT TEMPERATURE LISTED ON THE TOP OF THE CHART. RUN THE ENGINE AT 1500 RPM AND MEASURE THE AIR TEMPERATURE AT ONE TO THE CENTER LOUVERS. COMPARE THIS READING WITH THE CHART. (NOTE RELATIVE HUMIDITY CAN BE DETERMINED IN A NUMBER OF WAYS THE MOST ACCURATE BEING COMMERCIALY AVAILABLE PSYCHROMETERS AND HUMIDITY METERS).

|                   |      | AMBIENT TEMPERATURE |    |    |    |     |
|-------------------|------|---------------------|----|----|----|-----|
|                   |      | 60                  | 70 | 80 | 90 | 100 |
| RELATIVE HUMIDITY | 10%  | *                   | *  | 38 | 48 | 58  |
|                   | 20%  | *                   | *  | 39 | 49 | 59  |
|                   | 30%  | *                   | *  | 45 | 49 | 63  |
|                   | 40%  | *                   | 39 | 48 | 53 | 68  |
|                   | 50%  | *                   | 42 | 53 | 57 | 73  |
|                   | 60%  | *                   | 46 | 57 | 60 | 79  |
|                   | 70%  | *                   | 49 | 61 | 67 | 82  |
|                   | 80%  | 39                  | 52 | 64 | 71 | 85  |
|                   | 90%  | 42                  | 55 | 68 | 74 | 88  |
|                   | 100% | 46                  | 57 | 71 | 77 | 90  |

\* VALUES IN THE SHADED AREA SUBJECT TO FLUCTUATION DUE TO CYCLING OF THE COMPRESSOR