



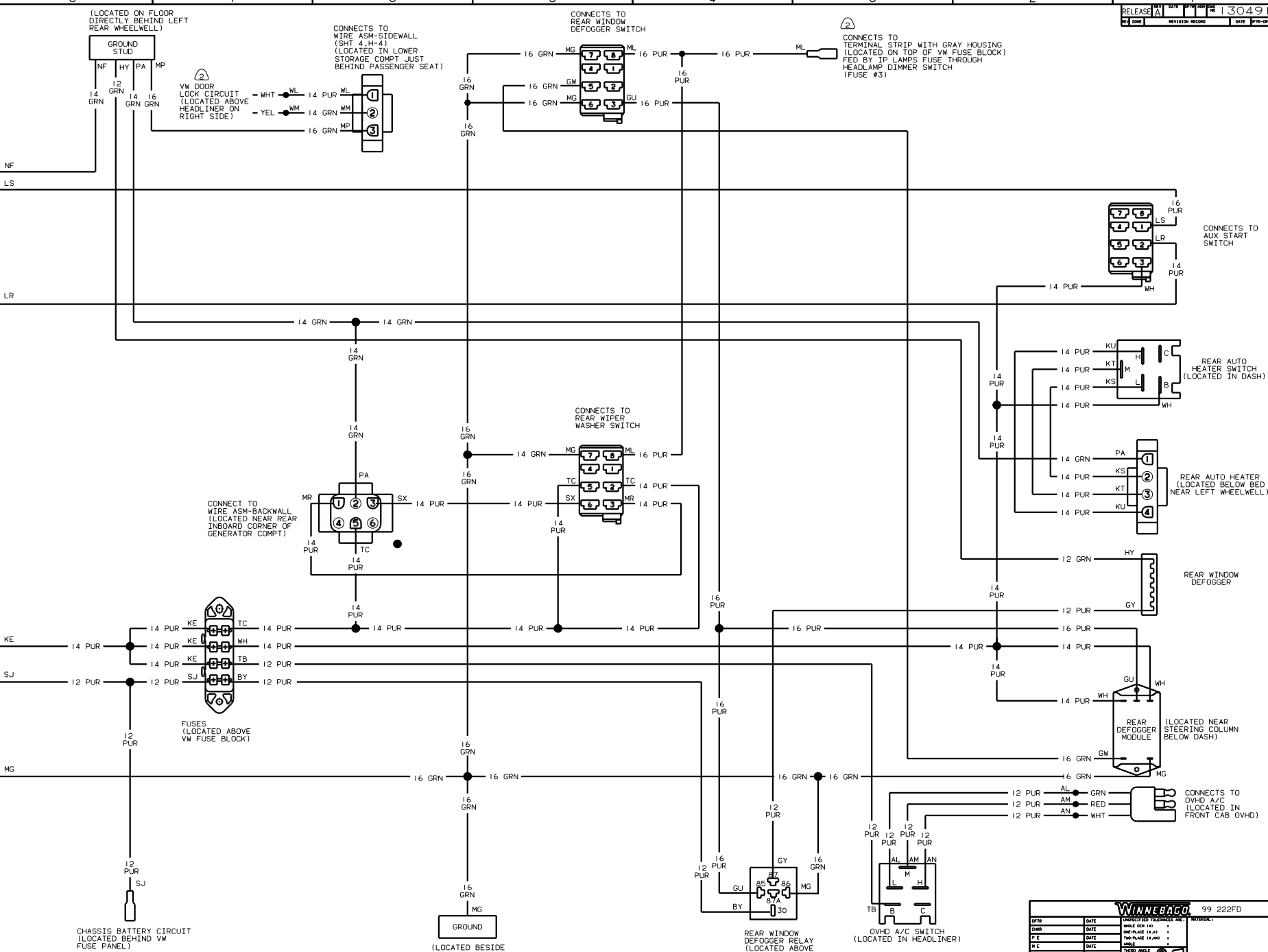
DANGER

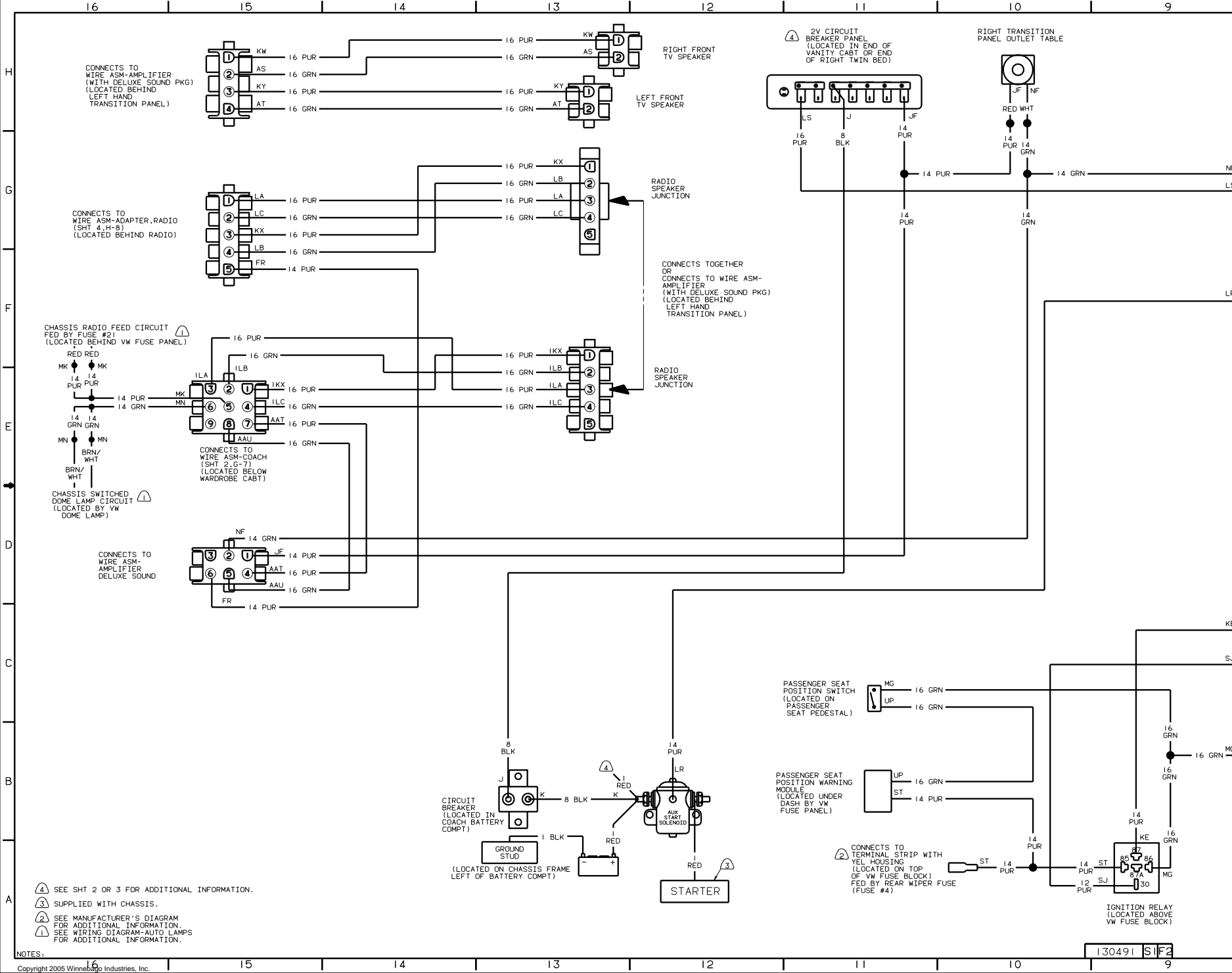
Danger of electrical shock, burns or death. Always remove all power sources before attempting any repair, service or diagnostic work. Power can be present from shore power, generator, inverter or battery. All power sources must be disabled and secured before performing any service.

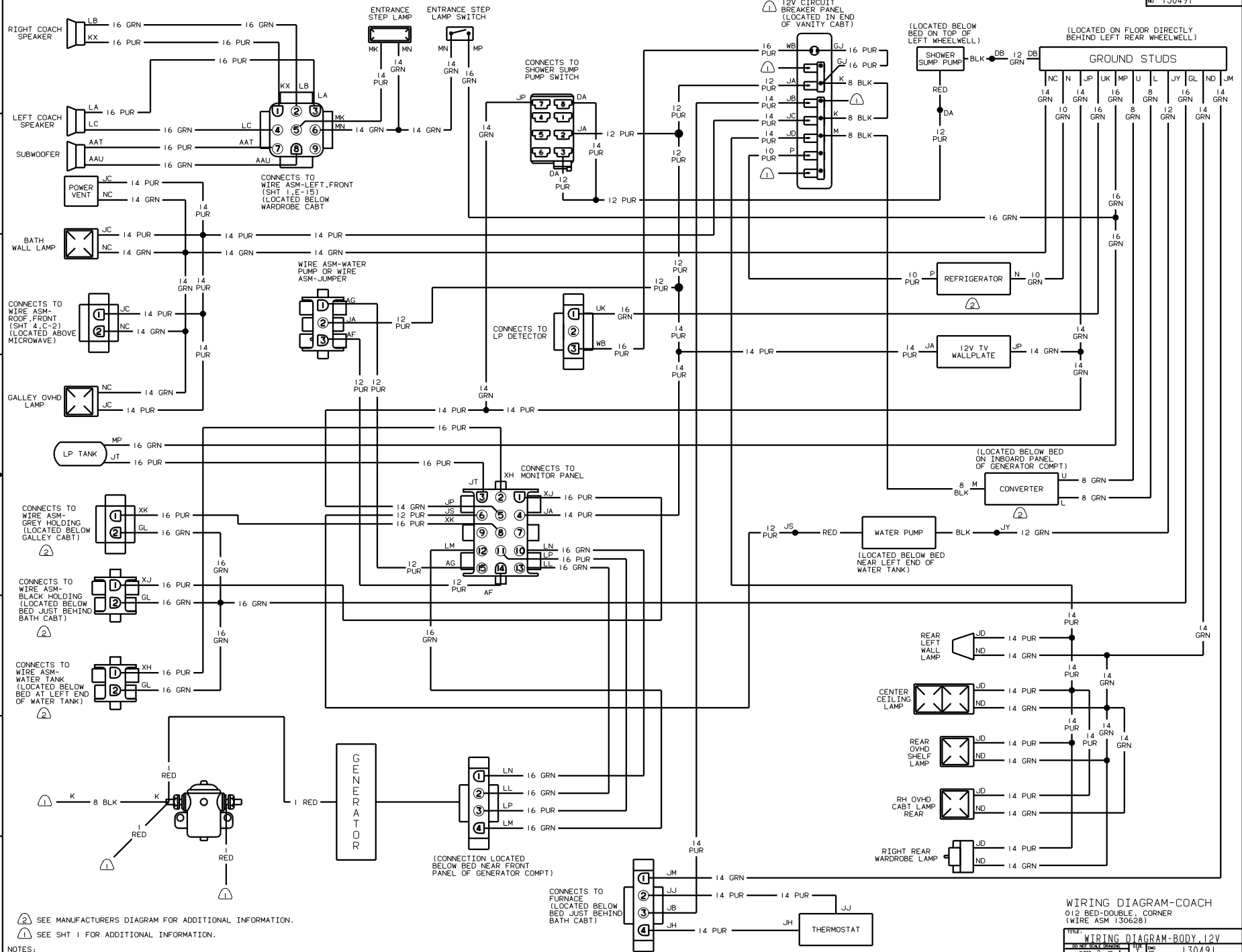


CAUTION

If you lack the skills, tools or equipment to perform diagnostic or repair work leave such work to an authorized Winnebago Industries dealer or other qualified shop.





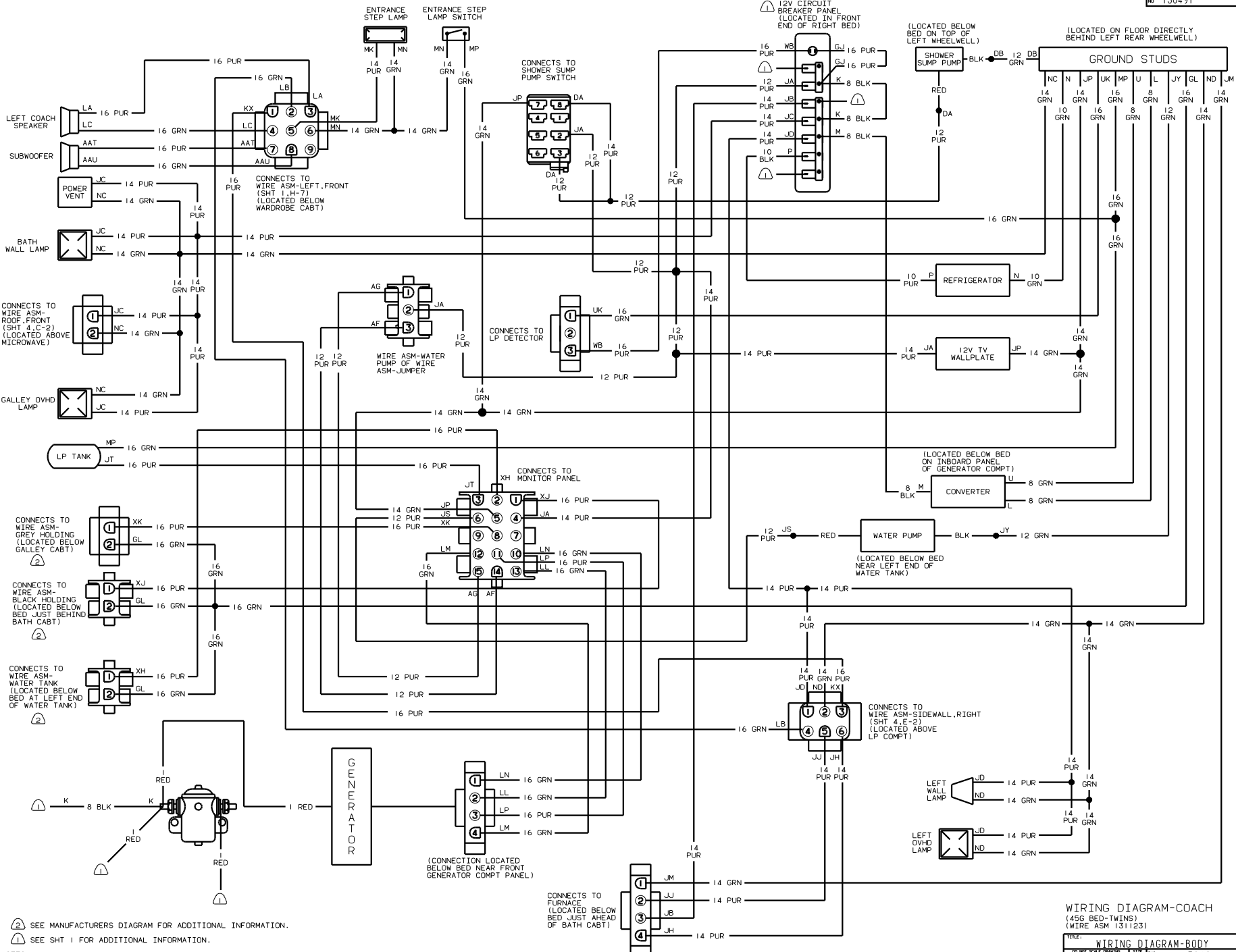


② SEE MANUFACTURERS DIAGRAM FOR ADDITIONAL INFORMATION.
 ⚠ SEE SHT 1 FOR ADDITIONAL INFORMATION.

NOTES:

WIRING DIAGRAM-COACH
 012 BED-DOUBLE, CORNER
 (WIRE ASM 130628)

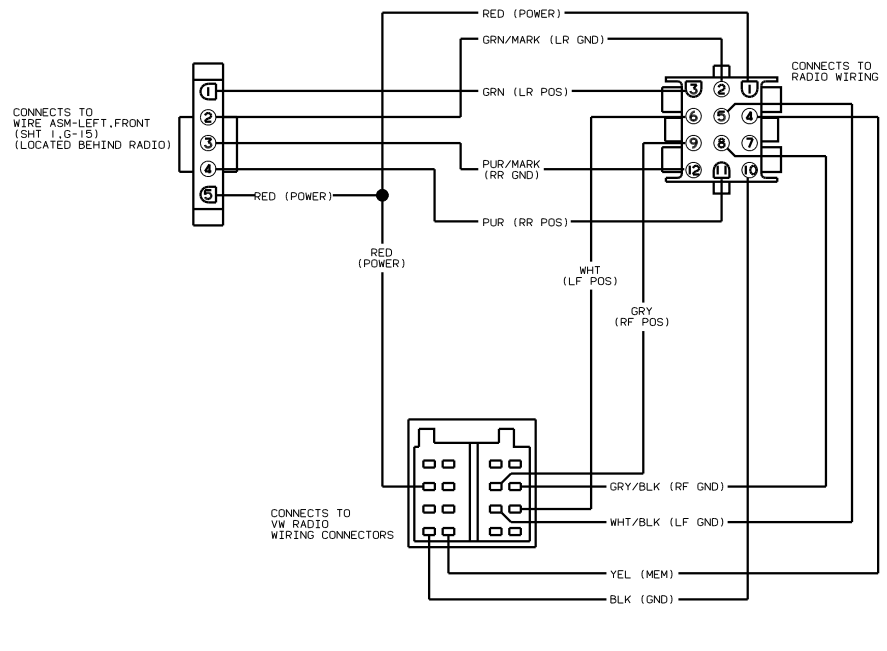
TITLE:	WIRING DIAGRAM-BODY_12V
NO. OF SHEETS:	4
SHEET NO.:	2
DATE:	1.6
REV. NO.:	130491



② SEE MANUFACTURERS DIAGRAM FOR ADDITIONAL INFORMATION.
 ⚠ SEE SHT 1 FOR ADDITIONAL INFORMATION.

WIRING DIAGRAM-COACH
 (45G BED-TWINS)
 (WIRE ASM 131123)

TITLE:	WIRING DIAGRAM-BODY
NO. OF SHEETS:	16
SHEET NO.:	3 OF 4
REV. NO.:	1 E
REV. DATE:	130491



WIRING DIAGRAM-ADAPTER, RADIO (WIRE ASM 114365-02)

