



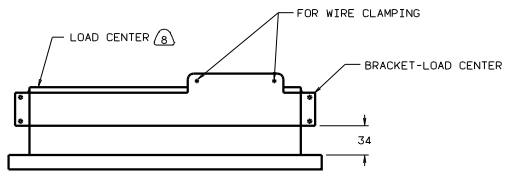
**DANGER**

**Danger of electrical shock, burns or death.** Always remove all power sources before attempting any repair, service or diagnostic work. Power can be present from shore power, generator, inverter or battery. All power sources must be disabled and secured before performing any service.

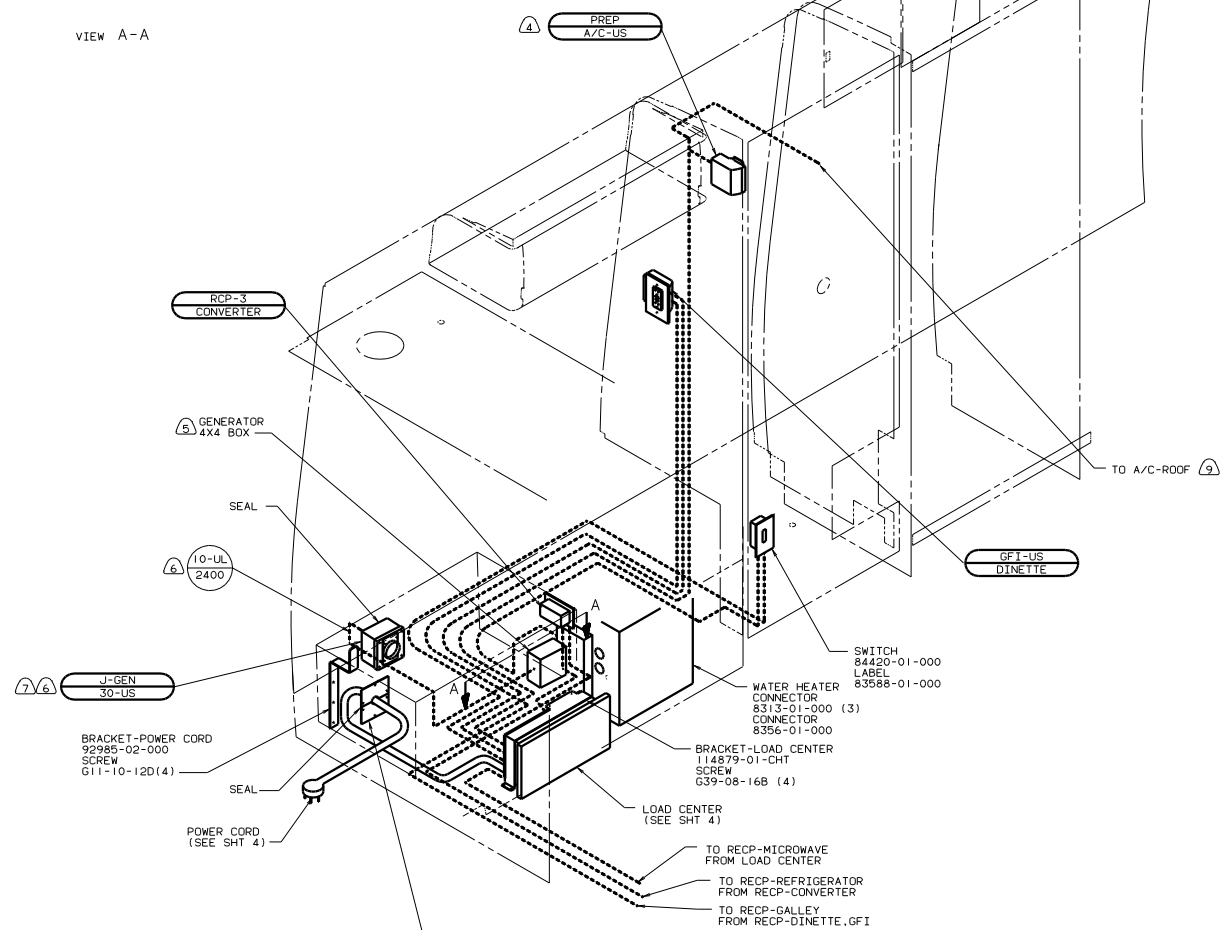


**CAUTION**

If you lack the skills, tools or equipment to perform diagnostic or repair work leave such work to an authorized Winnebago Industries dealer or other qualified shop.



VIEW A-A



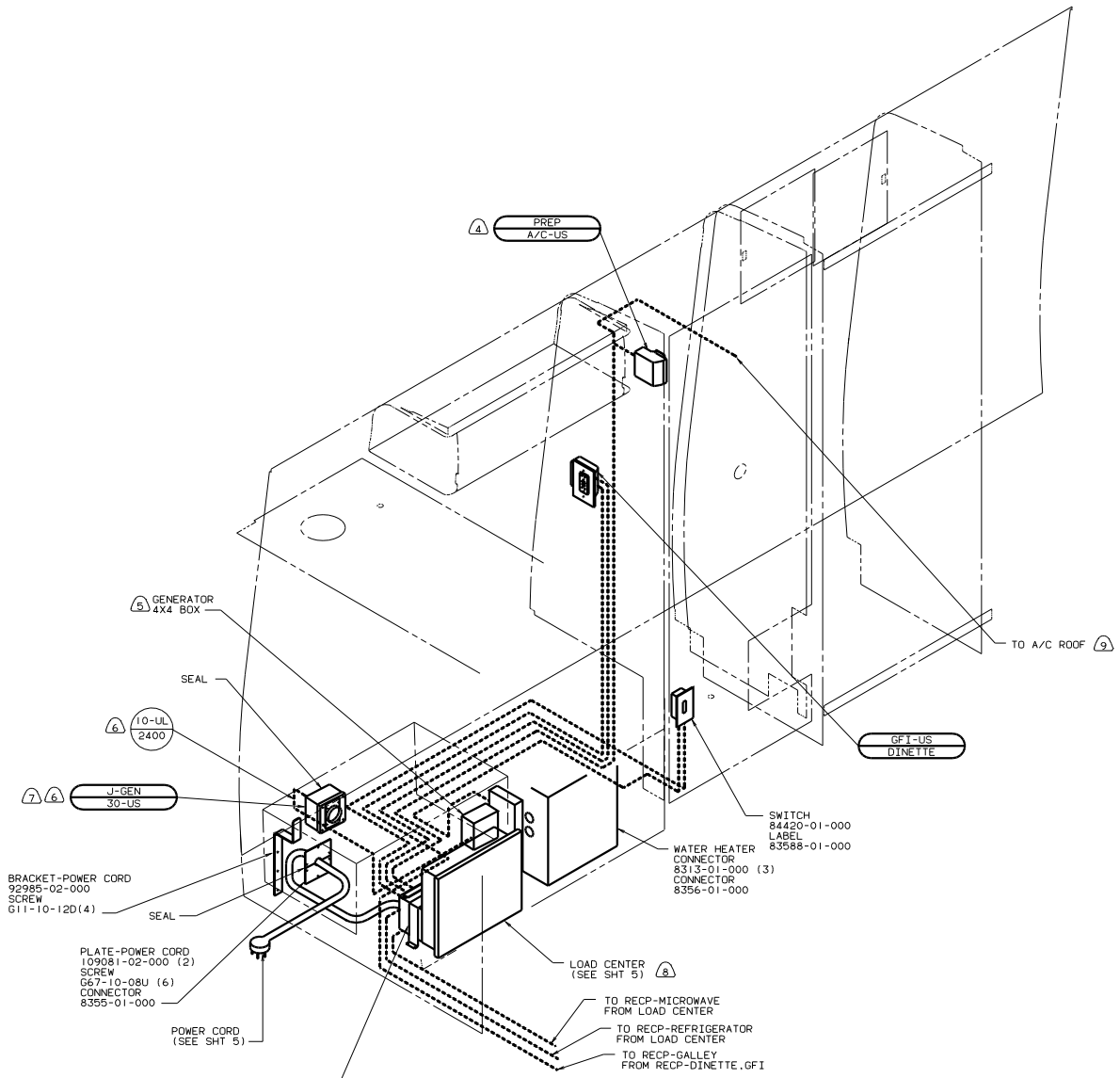
- (9) 29K A/C, ROOF-ONE 7.100.
  - (8) LOCATE LOAD CENTER WITHIN DINETTE SEAT FACE.
  - (7) INSTALL RECP WITH GROUND TOWARD BOTTOM OF VEHICLE.
  - (6) 14M GEN-3.0 KW, GENERAC, GAS.
  - (5) SEE GENERATOR INSTL FOR ADDITIONAL INFORMATION.
  - (4) NOT USED WITH 29K A/C, ROOF-ONE 7.100.
3. ALL GROUND WIRES TO BE COVERED WITH TUBING 8041-02-000.
2. ALL WIRES ARE TO BE CLAMPED WITH CLAMP 10497-05-000 WITHIN 200 OF OUTLET BOXES. USE SCREW G67-10-12B.
1. ALL WIRES TO BE CLAMPED WITH CLAMP 10495-01-000 OR CLIP 80734-01-000 EVERY 600. USE SCREW G67-10-12B UNLESS OTHERWISE SPECIFIED.

NOTES:

12D ELECTRICAL SYS-30 AMP  
 IBI CODE STANDARDS-USA

98 222RD		DATE	UNSPECIFIED TOLERANCES ARE:	MATERIAL
		DATE	WHOLE DIM IN.	
DATE	ONE-PLACE IN.			
DATE	TWO-PLACE IN.			
DATE	THREE-PLACE IN.			
DATE	FOUR-PLACE IN.			
DATE	FIVE-PLACE IN.			
DATE	SIX-PLACE IN.			
DATE	SEVEN-PLACE IN.			
DATE	EIGHT-PLACE IN.			
DATE	NINE-PLACE IN.			
DATE	TEN-PLACE IN.			
DATE	ELEVEN-PLACE IN.			
DATE	TWELVE-PLACE IN.			
DATE	THIRTY-PLACE IN.			
DATE	ONE-PLACE IN.			
DATE	TWO-PLACE IN.			
DATE	THREE-PLACE IN.			
DATE	FOUR-PLACE IN.			
DATE	FIVE-PLACE IN.			
DATE	SIX-PLACE IN.			
DATE	SEVEN-PLACE IN.			
DATE	EIGHT-PLACE IN.			
DATE	NINE-PLACE IN.			
DATE	TEN-PLACE IN.			
DATE	ELEVEN-PLACE IN.			
DATE	TWELVE-PLACE IN.			

FOR ELECTRICAL TORQUE SPECIFICATIONS SEE DWG NO. 128783-01-000	(X-X)	FOR ELECTRICAL CALLOUTS SEE DWG NO. 121339-01-000
--	-------	---



- ⑨ 29K A/C, ROOF-ONE 7.100.
- ⑧ LOCATE LOAD CENTER WITHIN DINETTE SEAT FACE.
- ⑦ INSTALL RECP WITH GROUND TOWARD BOTTOM OF VEHICLE.
- ⑥ USE WITH GENERATOR.
- ⑤ SEE GENERATOR INSTL FOR ADDITIONAL INFORMATION.
- ④ NOT USED WITH 29K A/C, ROOF-ONE 7.100.

3. ALL GROUND WIRES TO BE COVERED WITH TUBING 8041-02-000.
2. ALL WIRES ARE TO BE CLAMPED WITH CLAMP 10497-05-000 WITHIN 200 OF OUTLET BOXES. USE SCREW G67-10-12B.
1. ALL WIRES TO BE CLAMPED WITH CLAMP 10495-01-000 OR CLIP 80734-01-000 EVERY 600. USE SCREW G67-10-12B UNLESS OTHERWISE SPECIFIED.

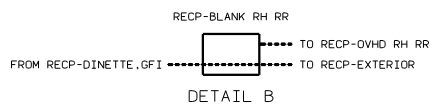
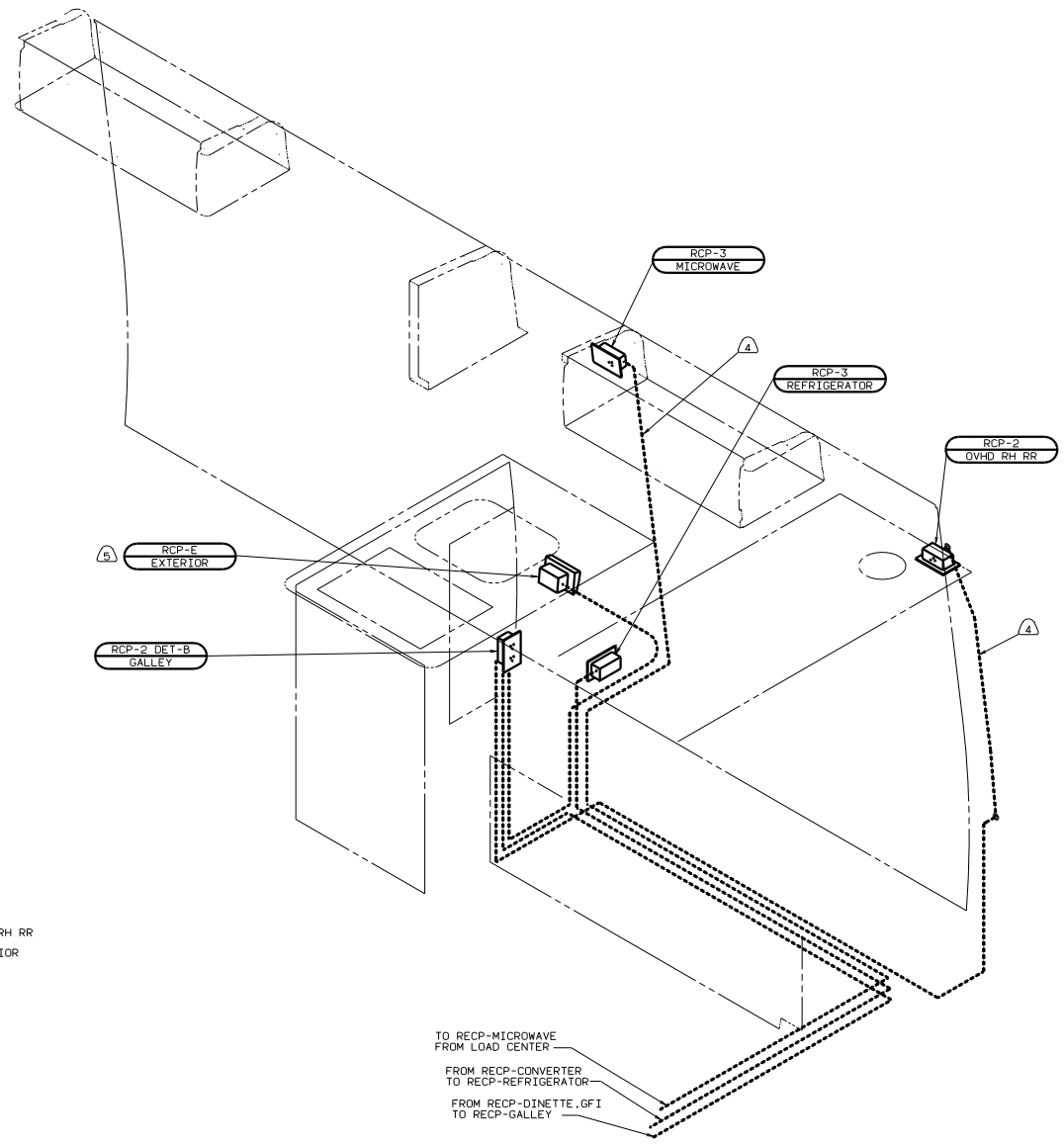
NOTES:

FOR ELECTRICAL TORQUE SPECIFICATIONS SEE DWG NO. 128783-01-000

FOR ELECTRICAL CALLOUTS SEE DWG NO. 121339-01-000

98 222RD  
12D ELECTRICAL SYS-30 AMP  
04L JAPAN EXPORT PKG

TITLE: WIRING INSTL-BODY(110130JPN)  
SHEET 2 OF 12  
126966



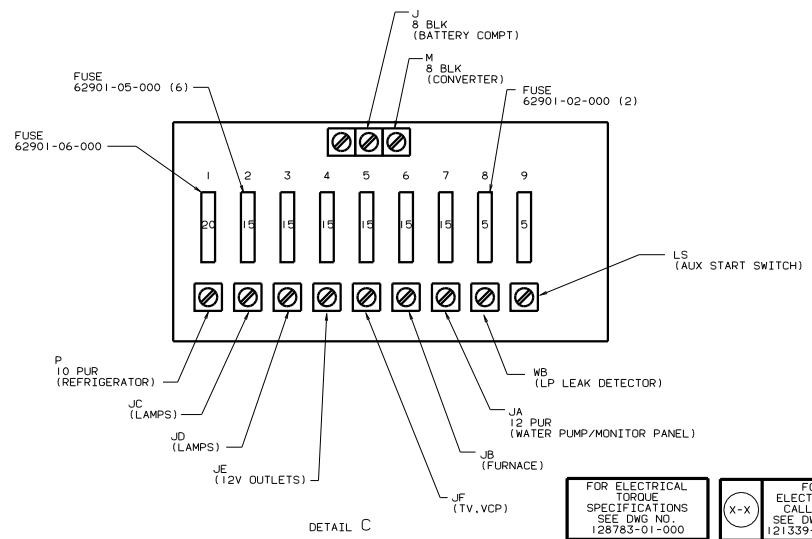
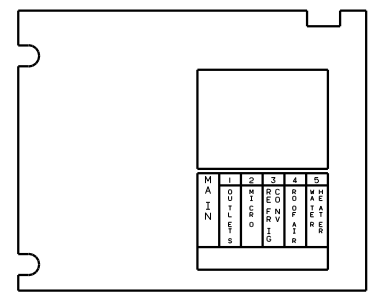
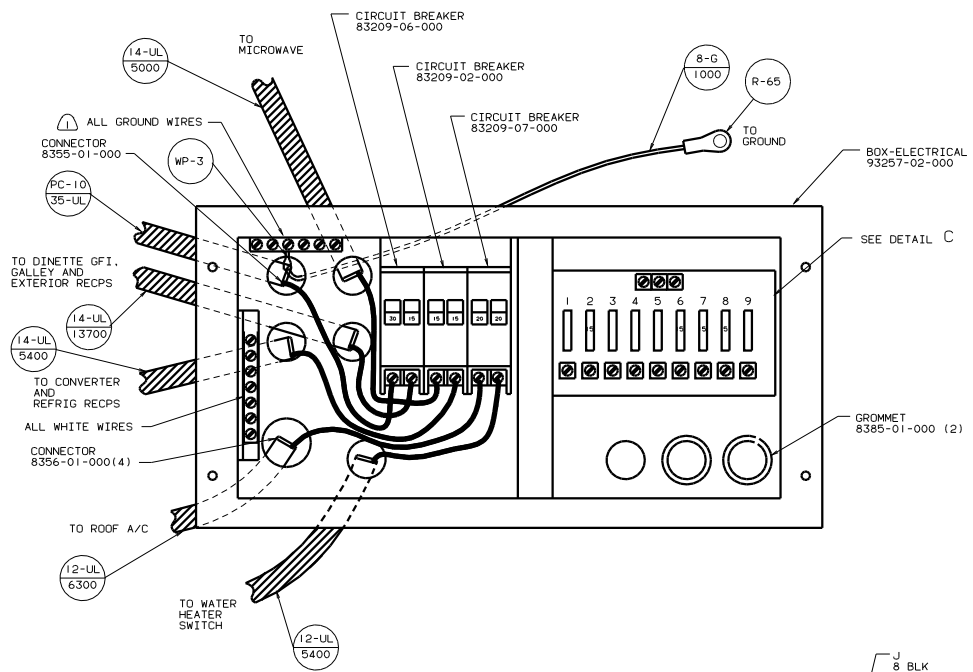
- NOTES:
- 5) SEAL BACK SIDE OF RECP FACE.
  - 4) ROUTE WIRE THRU SIDEWALL.
  - 3. ALL GROUND WIRES TO BE COVERED WITH TUBING 8041-02-000.
  - 2. ALL WIRES ARE TO BE CLAMPED WITH CLAMP 10497-05-000 WITHIN 200 OF OUTLET BOXES. USE SCREW G67-10-12B.
  - 1. ALL WIRES TO BE CLAMPED WITH CLAMP 10495-01-000 OR CLIP 80734-01-000 EVERY 600. USE SCREW G67-10-12B UNLESS OTHERWISE SPECIFIED.

FOR ELECTRICAL TORQUE SPECIFICATIONS SEE DWG NO. 126763-01-000

(X-X) FOR ELECTRICAL CALLOUTS SEE DWG NO. 121339-01-000

12D ELECTRICAL SYS-30 AMP  
04L JAPAN EXPORT PKG  
IB1 CODE STANDARDS-USA

TITLE		12D ELECTRICAL SYS-30 AMP	
DRAWING NO.		126966	
SHEET		3 OF 12	
REV		1 E	
DATE		126966	



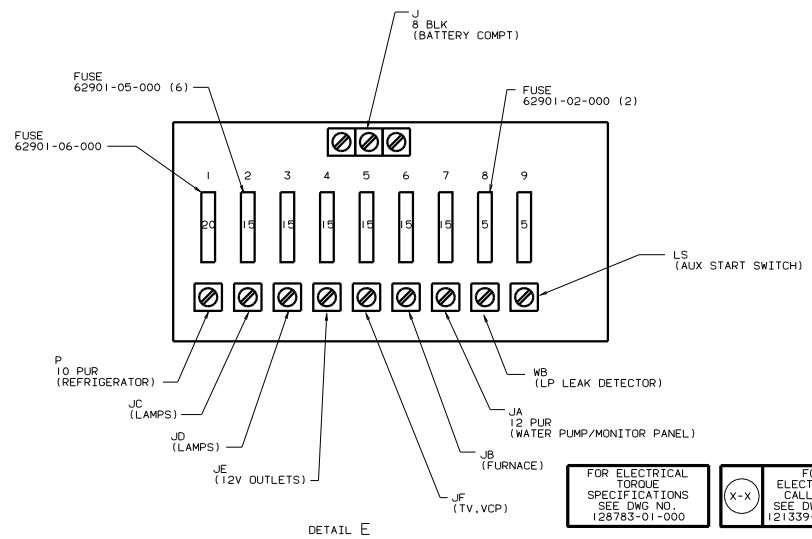
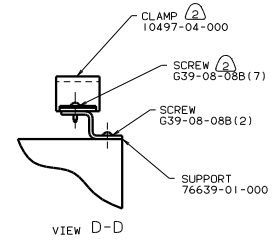
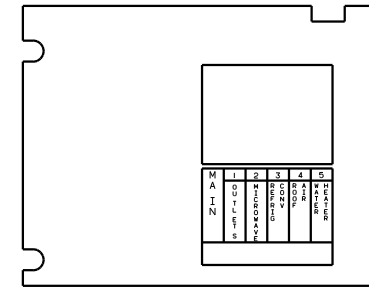
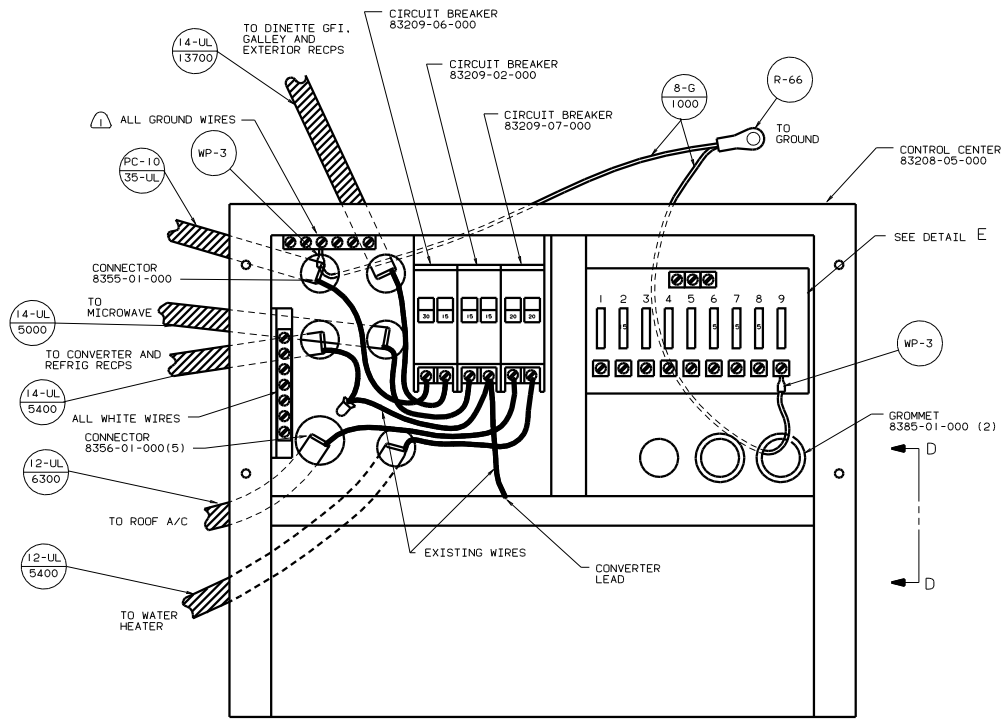
⚠ ALL GROUND WIRES TO BE COVERED WITH TUBING 8041-02-000.

FOR ELECTRICAL TORQUE SPECIFICATIONS SEE DWG NO. 126783-01-000

FOR ELECTRICAL CALLOUTS SEE DWG NO. 121339-01-000

98 222RD  
LOAD CENTER  
12D ELECTRICAL SYS-30 AMP  
IB1 CODE STANDARDS-USA

TITLE		WIRING INSTL-BODY(30 LC US)	
NO	REV	DATE	BY
1	1		
SHEET		4 OF 12	
DWG NO		126966	



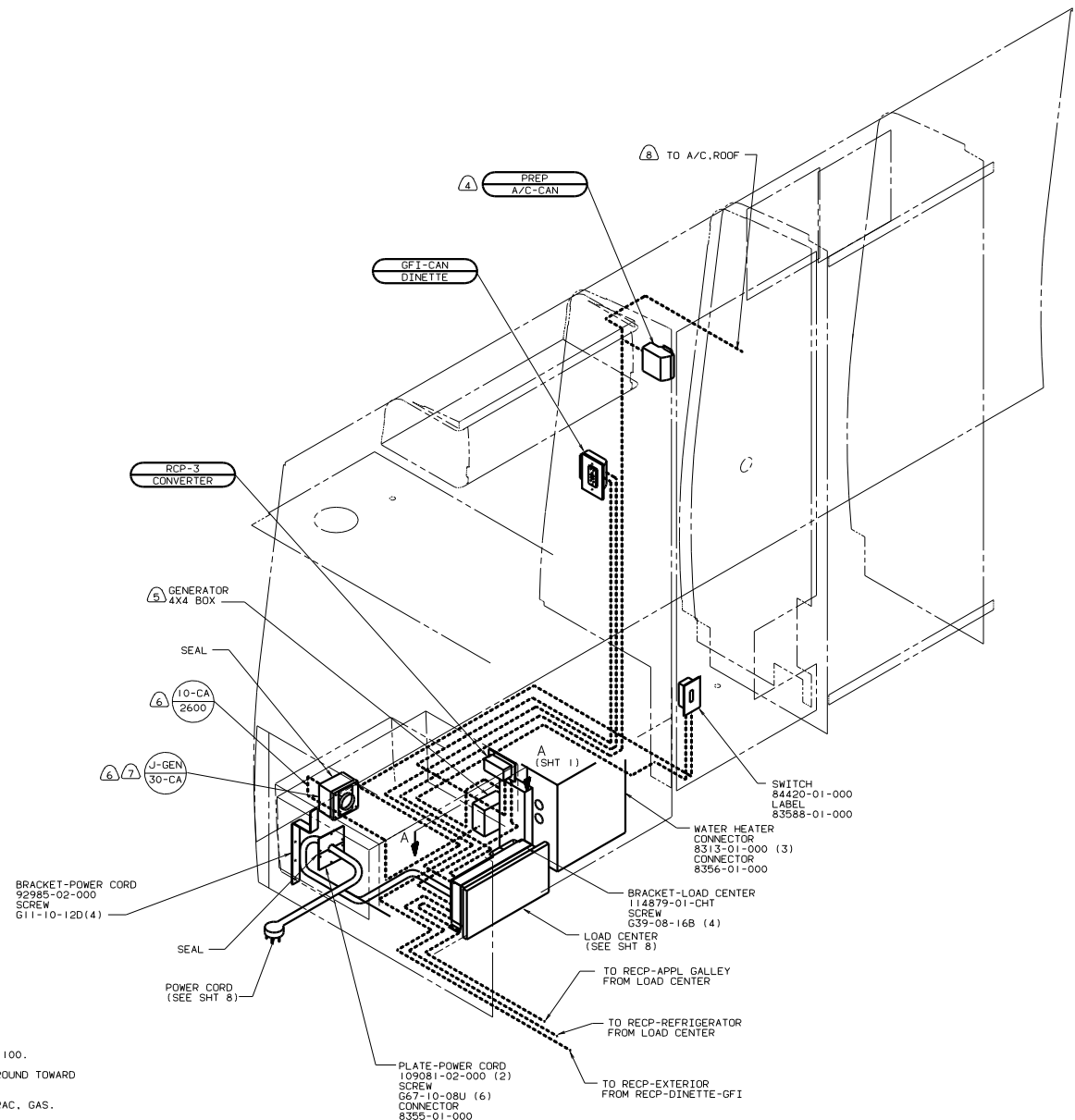
2 FASTEN ALL WIRES TO SUPPORT. USE ONE SCREW PER CLAMP.  
 1 ALL GROUND WIRES TO BE COVERED WITH TUBING 8041-02-000.

FOR ELECTRICAL TORQUE SPECIFICATIONS SEE DWG NO. 128783-01-000

FOR ELECTRICAL CALLOUTS SEE DWG NO. 121339-01-000

98 222RD  
 LOAD CENTER  
 12D ELECTRICAL SYS-30 AMP  
 04L JAPAN EXPORT PKG

WIRING INSTL-BODY(30 LC JPN)  
 SHEET 5 OF 12  
 126966



- (8) 29K A/C, ROOF-ONE 7.100.
  - (7) INSTALL RECP WITH GROUND TOWARD BOTTOM OF VEHICLE.
  - (6) 14M GEN-3.0KW, GENERAC, GAS.
  - (5) SEE GENERATOR INSTL FOR ADDITIONAL INFORMATION.
  - (4) NOT USED WITH 29K A/C, ROOF-ONE 7.100.
3. ALL GROUND WIRES TO BE COVERED WITH TUBING 8011-02-000.
2. ALL WIRES ARE TO BE CLAMPED WITH CLAMP 10497-05-000 WITHIN 200 OF OUTLET BOXES. USE SCREW 667-10-12B.
1. ALL WIRES TO BE CLAMPED WITH CLAMP 10495-01-000 OR CLIP 80734-01-000 EVERY 600. USE SCREW 667-10-12B UNLESS OTHERWISE SPECIFIED.

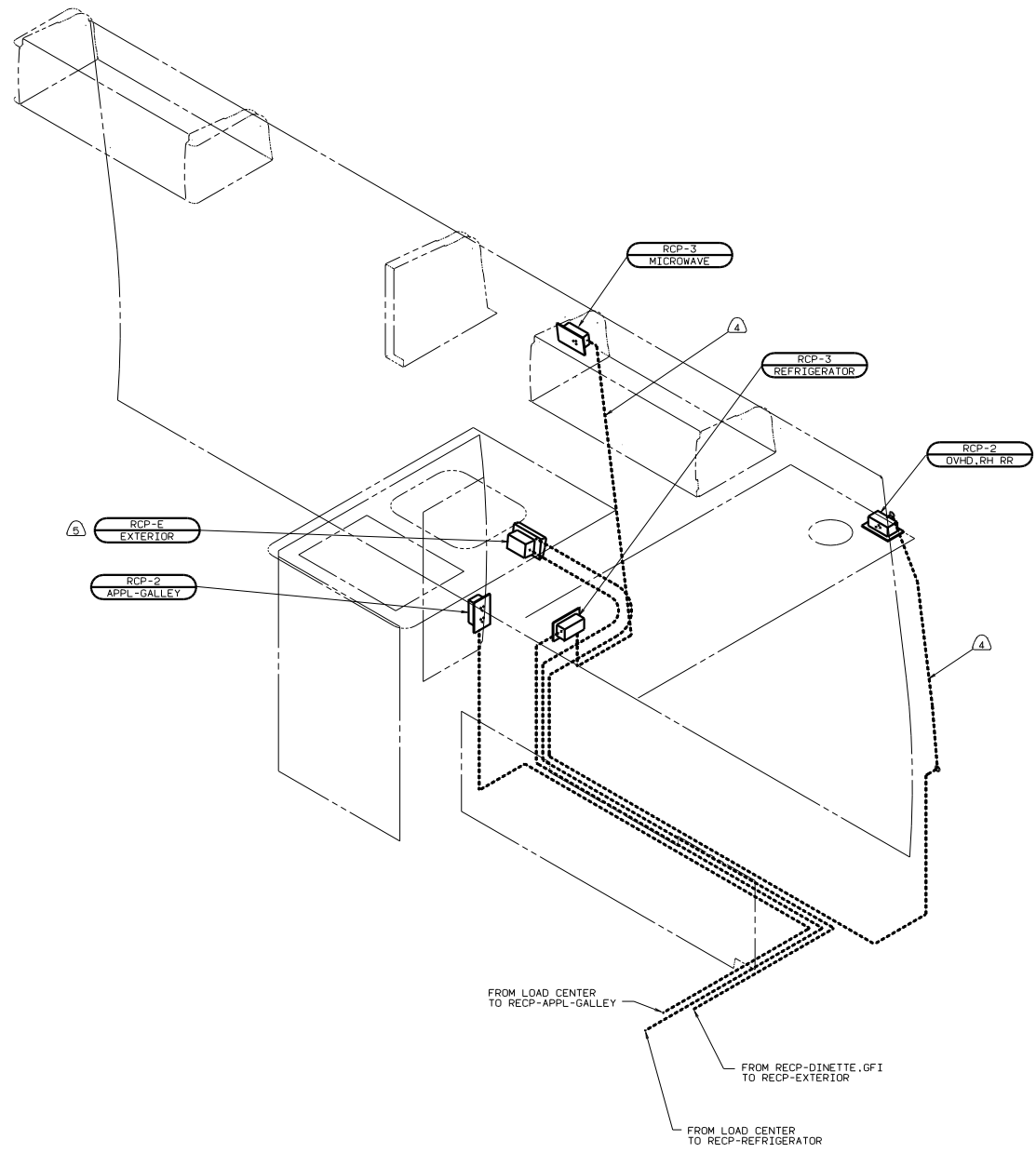
NOTES:

FOR ELECTRICAL TORQUE SPECIFICATIONS SEE DWG NO. 128783-01-000

FOR ELECTRICAL CALLOUTS SEE DWG NO. 121339-01-000

98 222RD  
110V LEFT SIDE  
265 CODE STANDARDS-CSA  
12D ELECTRICAL SYS-30 AMP

TITLE: WIRING INSTL-BODY(110L30CAN)  
SHEET 6 OF 12  
124669



- 5) SEAL BACK SIDE OF REC-P FACE.
- 4) ROUTE WIRE THRU SIDEWALL.
- 3. ALL GROUND WIRES TO BE COVERED WITH TUBING 8011-02-000.
- 2. ALL WIRES ARE TO BE CLAMPED WITH CLAMP 10497-05-000 WITHIN 200 OF OUTLET BOXES. USE SCREW G67-10-12B.
- 1. ALL WIRES TO BE CLAMPED WITH CLAMP 10495-01-000 OR CLIP 80734-01-000 EVERY 600. USE SCREW G67-10-12B UNLESS OTHERWISE SPECIFIED.

NOTES:

FROM LOAD CENTER TO REC-P-APPL-GALLEY

FROM REC-P-DINETTE GFI TO REC-P-EXTERIOR

FROM LOAD CENTER TO REC-P-REFRIGERATOR

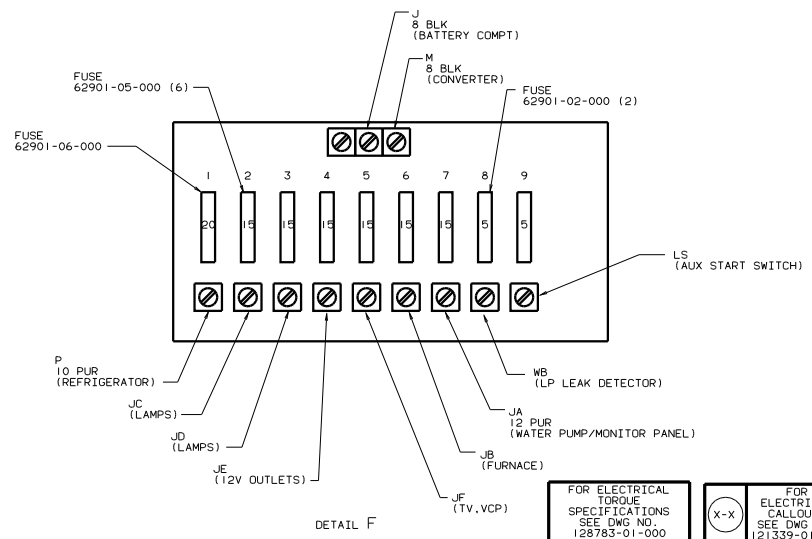
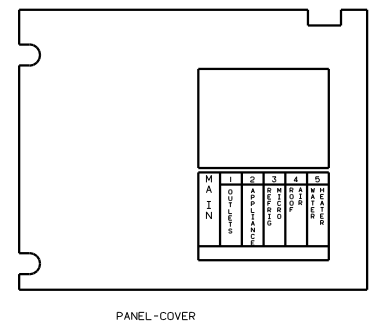
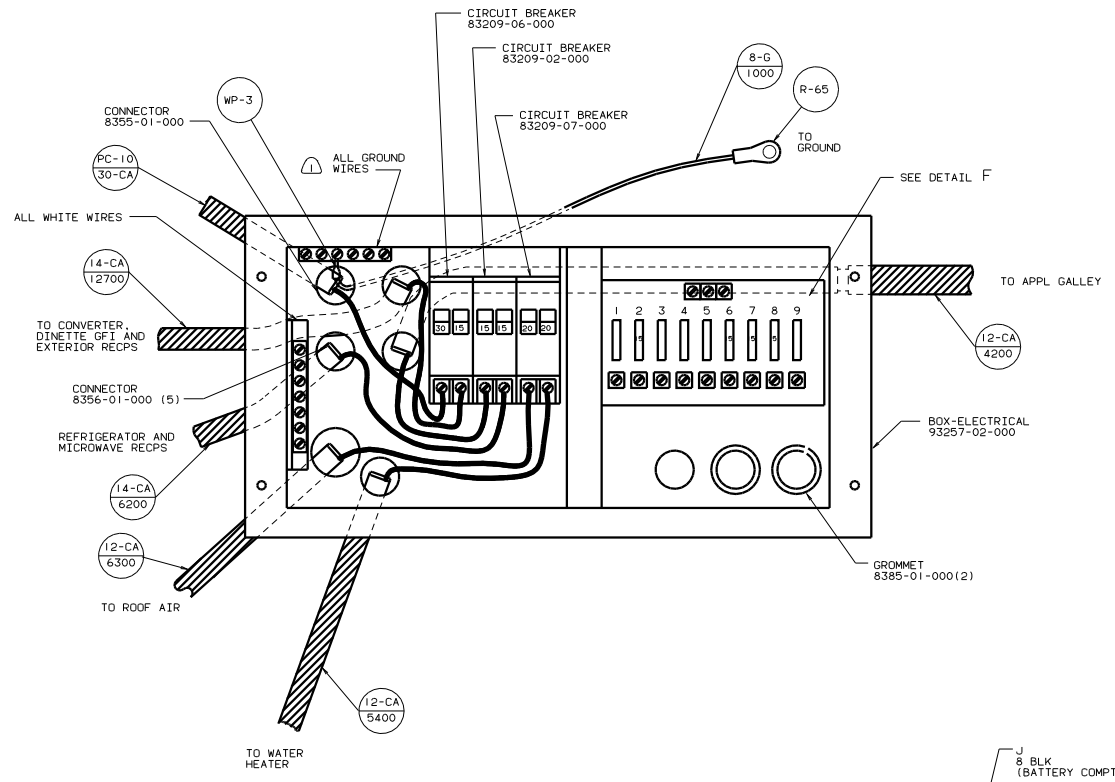
FOR ELECTRICAL TORQUE SPECIFICATIONS SEE DWG NO. 128783-01-000

FOR ELECTRICAL CALLOUTS SEE DWG NO. 121339-01-000

98 222RD  
265 CODE STANDARDS-CSA  
12D ELECTRICAL SYS-30 AMP

TITLE: WIRING INSTL-BODY (110R30CAN)  
SHEET 7 OF 12 I.E. NO. 126966





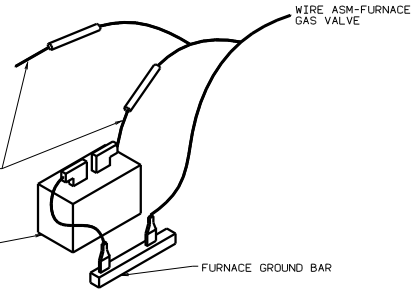
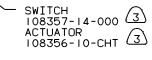
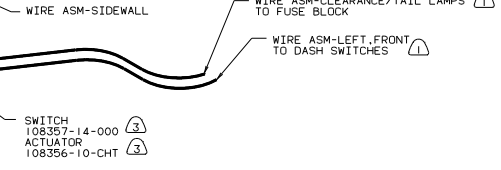
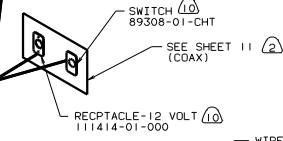
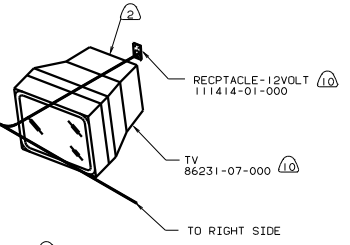
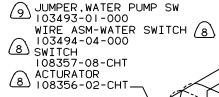
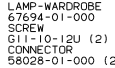
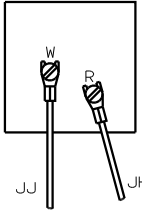
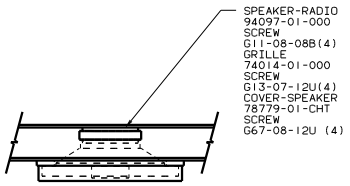
NOTES: ALL GROUND WIRES TO BE COVERED WITH TUBING 8041-02-000.

FOR ELECTRICAL TORQUE SPECIFICATIONS SEE DWG NO. 128783-01-000

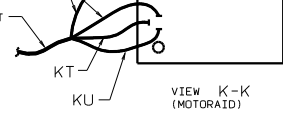
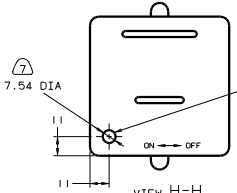
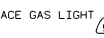
FOR ELECTRICAL CALLOUTS SEE DWG NO. 121339-01-000

98 222RD  
LOAD CENTER  
265 CODE STANDARDS-CSA  
12D ELECTRICAL SYS-30 AMP

TITLE	WIRING INSTL-BODY(30 LC CAN)
NO. OF SHEETS	8 of 12
DWG NO	126966



DETAIL J



- 9 NOT USED WITH 64R EXTERIOR WASH STATION.
- 8 64R EXTERIOR WASH STATION.
- 7 DRILL HOLE THROUGH TOP SURFACE AND BASE.
- 6 DISCONNECT FURNACE WIRES AND RECONNECT AS SHOWN.
- 5 04L JAPAN EXPORT PACKAGE.
- 4 WIRES L, U AND M NOT USED WITH 04L JAPAN EXPORT PKG.
- 3 140 SHOWER PACKAGE.
- 2 SEE TV INSTL-OVERHEAD FOR ADDITIONAL INFORMATION.
- 1 SEE DRAWING INSTL-FRONT END FOR ADDITIONAL INFORMATION.

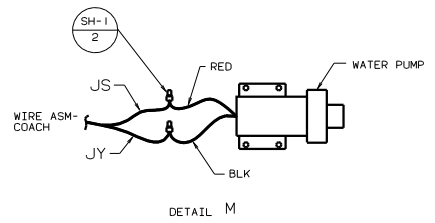
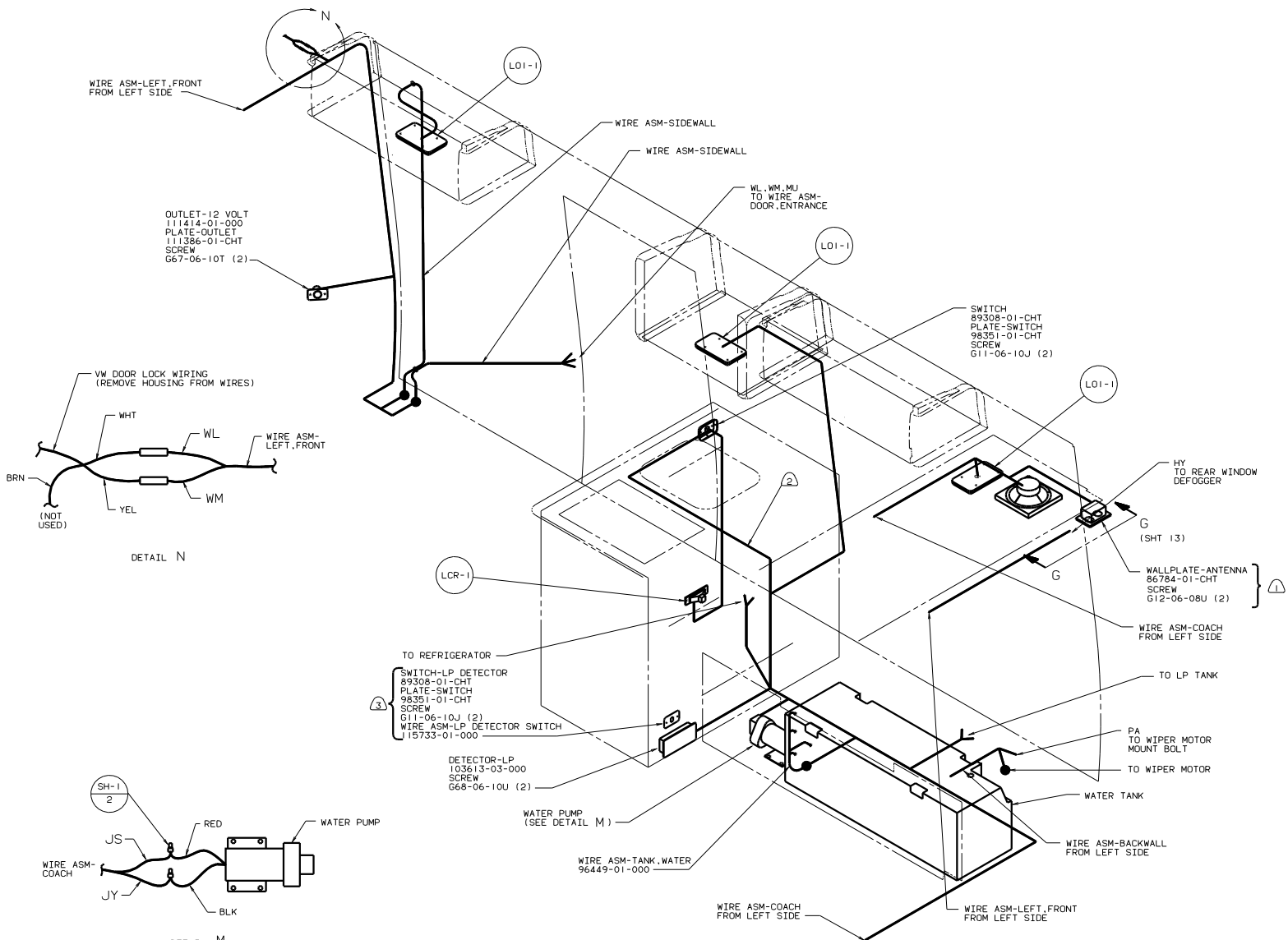
- 11 11V.VCP.
- 10 14R TV-9". 12V.

FOR ELECTRICAL  
TORQUE  
SPECIFICATIONS  
SEE DWG NO.  
128783-01-000

FOR  
ELECTRICAL  
CALLOUTS  
SEE DWG NO.  
121339-01-000

98 222RD  
265 CODE STANDARDS-CSA  
1B1 CODE STANDARDS-USA

TITLE: WIRING INSTL-BODY(12 L)  
SHEET 9 OF 12  
126966

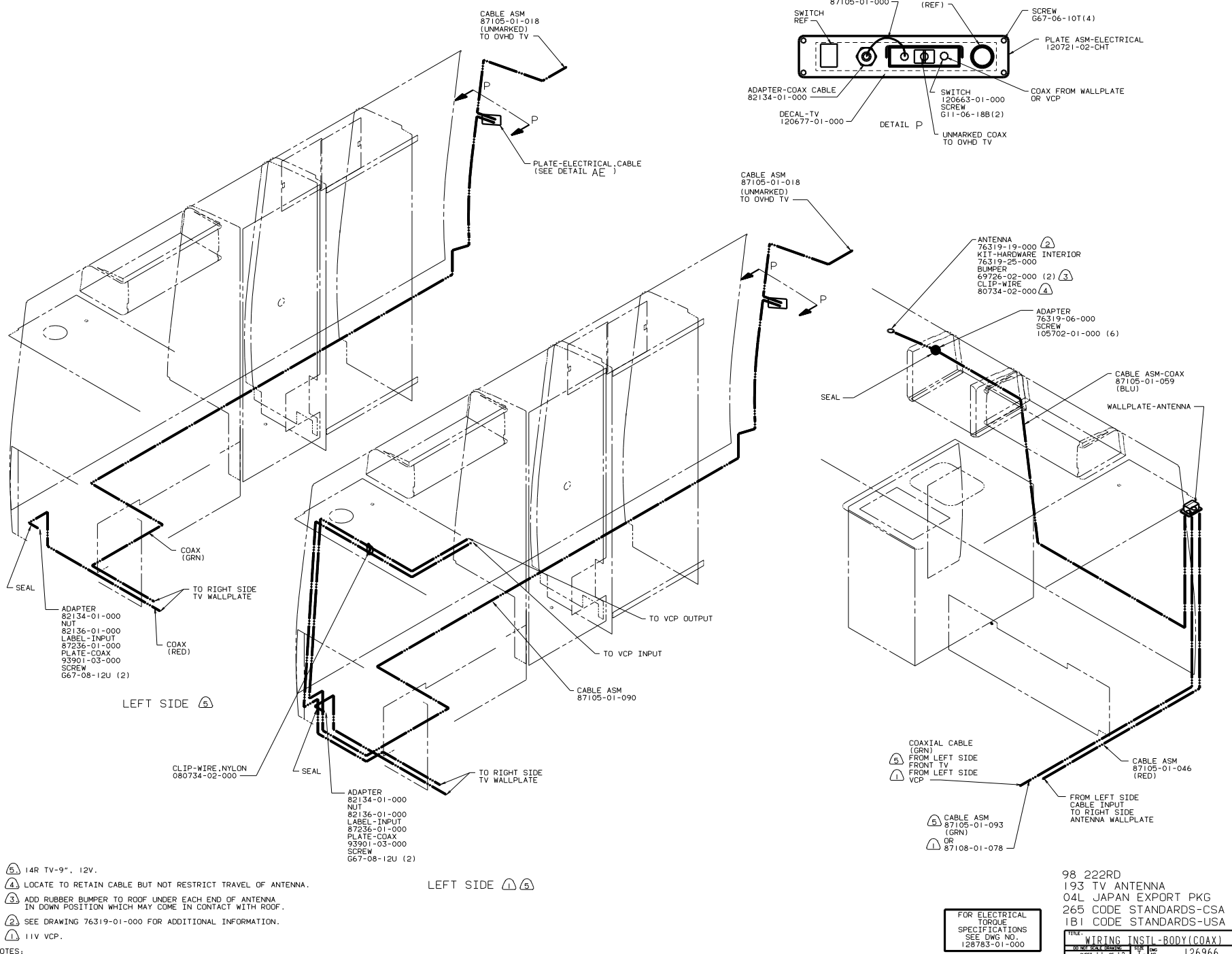


- NOTES:
- ③ 04L JAPAN EXPORT PKG.
  - ② RUN ALONG TOP STICK OF GALLEY DIVIDER PANEL. CLAMP WITH CABLE TIE 108046-01-000 AND SCREW G67-10-12B APPROX. EVERY 750.
  - ① 193 TV ANTENNA.

FOR ELECTRICAL TORQUE SPECIFICATIONS SEE DWG NO. 128783-01-000	X-X	FOR ELECTRICAL CALLOUTS SEE DWG NO. 121339-01-000
--	-----	---

98 222RD  
265 CODE STANDARDS-CSA  
1B1 CODE STANDARDS-USA

TITLE	WIRING INSTL-BODY(12_R)
DWG NO.	126966
SHEET	10 OF 12

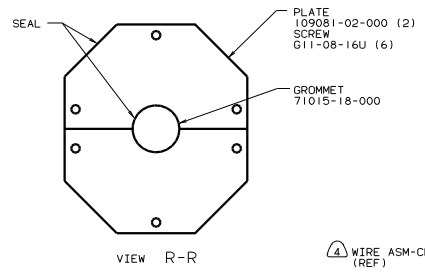


- NOTES:
- (5) 14R TV-9", 12V.
  - (4) LOCATE TO RETAIN CABLE BUT NOT RESTRICT TRAVEL OF ANTENNA.
  - (3) ADD RUBBER BUMPER TO ROOF UNDER EACH END OF ANTENNA IN DOWN POSITION WHICH MAY COME IN CONTACT WITH ROOF.
  - (2) SEE DRAWING 76319-01-000 FOR ADDITIONAL INFORMATION.
  - (1) 11V VCP.

FOR ELECTRICAL TORQUE SPECIFICATIONS SEE DWG NO. 128783-01-000

98 222RD  
 193 TV ANTENNA  
 04L JAPAN EXPORT PKG  
 265 CODE STANDARDS-CSA  
 1B1 CODE STANDARDS-USA

TITLE	WIRING INSTL-BODY(COAX)
NO. OF SHEETS	11 OF 12
REV	1 E
DWG NO.	126966



AIR CONDITIONER 93306-01-CHT  
CEILING ASM 93307-03-000  
SPRING A/C 102289-01-000 (4)

LAMP-CLEARANCE, AMBER 113709-01-000 (5)  
SCREW G11-08-12B (10)  
BULB-12V 124219-01-000(2)  
SCREW G11-08-12B(4)

LAMP-CLEARANCE, RED 102520-02-000 (5)  
GASKET 102541-01-000 (5)  
SCREW G39-08-16T (10)  
SEAL 102540-01-000 (10)  
BULB 26196-01-000 (5)

LAMP ASM-CENTER BRAKE 121950-01-000  
SCREW (SUPPLIED W/LAMP)

WIRE ASM-BACKWALL 124673-03-000  
124673-04-000

TO WIPER MOTOR

LAMP ASM-BACKUP 124968-01-CHT(2)  
SCREW (SUPPLIED W/LAMP)

CONNECTOR-SOCKET, TRAILER 101618-01-000 (2)

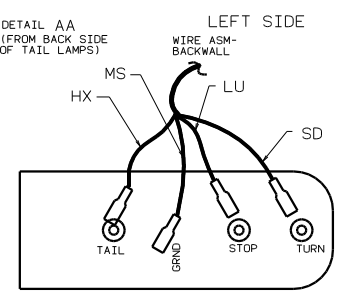
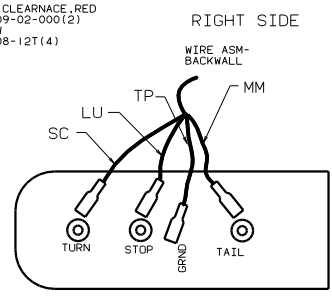
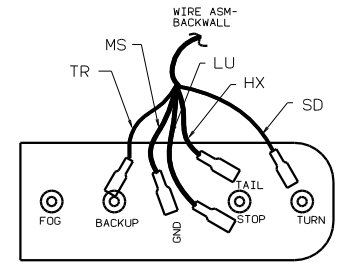
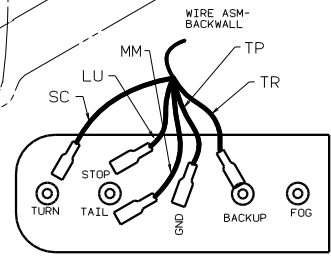
TO WIRE ASM-LICENSE PLATE LAMP

TO WASH PUMP

LAMP ASM 120742-02-000(2)  
120742-01-000(2)  
BRACKET ASM-TAIL LAMP(4)  
120942-01-CHT (4)  
SCREW G39-10-129 (8)  
GROMMET 23942-01-000(2)

REFLECTOR-RED 106646-02-000 (2)  
LOCATE REFLECTORS AS LOW AS POSSIBLE AND OUTBOARD WITHOUT GETTING INTO RADIUS OF BACK CAP BOTH SIDES

LAMP CLEARANCE, RED 113709-02-000(2)  
SCREW G11-08-12T(4)



DETAIL AA (STD)  
(FROM BACK SIDE OF TAIL LAMPS)

FOR ELECTRICAL TORQUE SPECIFICATIONS SEE DWG NO. 128783-01-000

98 222RD  
04L JAPAN EXPORT PKG  
265 CODE STANDARDS-CSA  
1B1 CODE STANDARDS-USA  
TITLE: WIRING INSTL-BODY(EX LJ)  
SHEET 12 OF 12

- NOTES:
- 8) 29K A/C. ROOF-ONE 7, 100.
  - 7) DELETE ALL CLEARANCE LAMPS WITH 04L JAPAN EXP.
  - 6) 04L JAPAN EXPORT PKG.
  - 5) NOT USED WITH 04L JAPAN EXPORT PKG.
  - 4) SEE WIRING INSTL-FRONT END FOR ADDITIONAL INFORMATION.
  - 3) SEE BUMPER ASM-REAR FOR ADDITIONAL INFORMATION.
  - 2) LOCATE ON CENTER OF HOLE IN CAP ASM-REAR.
  - 1. CONNECTOR-PLUG, TRAILER 113589-01-000 TO BE SUPPLIED LOOSE IN COACH WITH TRAILER TOW PACKAGE.