



DANGER

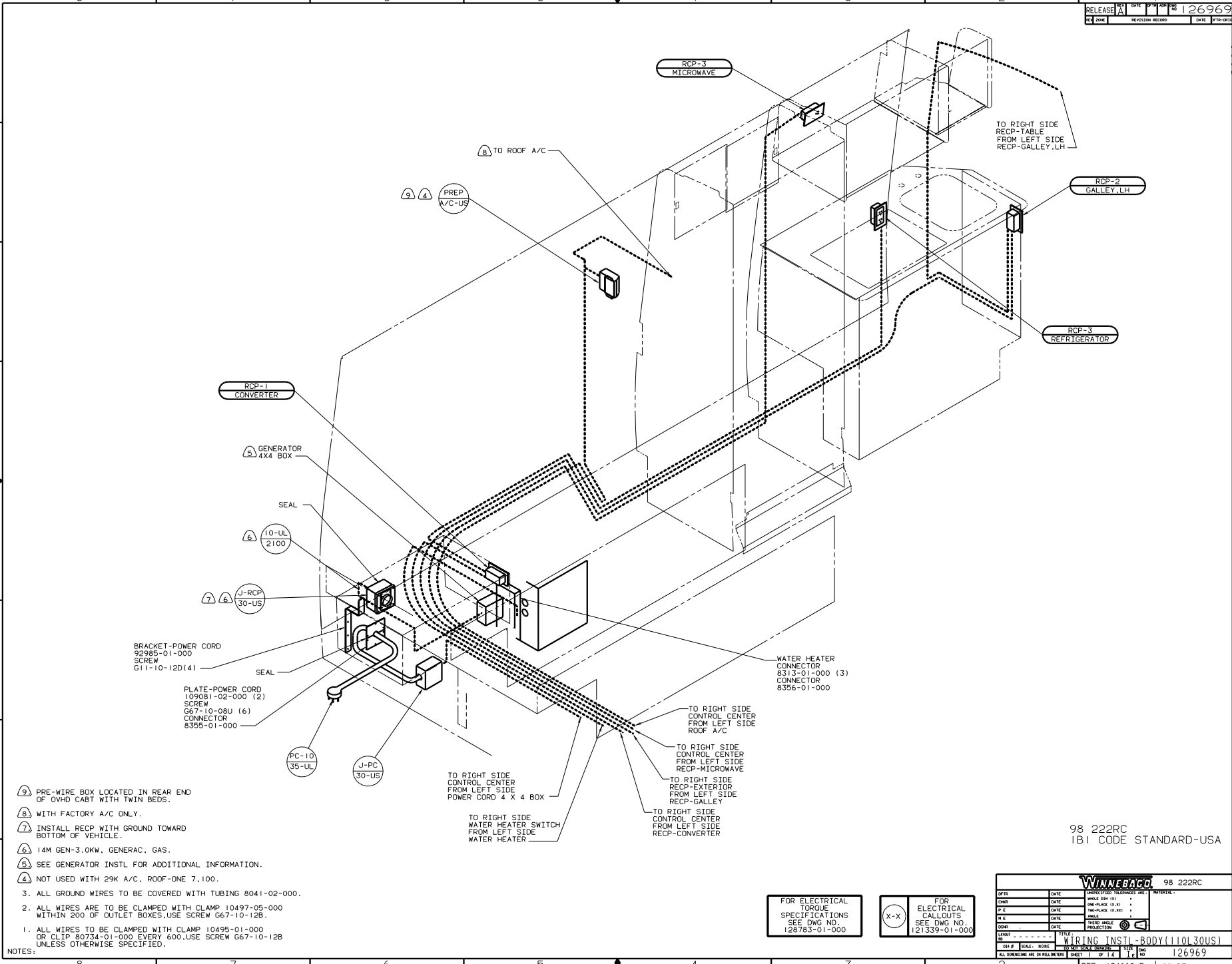
Danger of electrical shock, burns or death. Always remove all power sources before attempting any repair, service or diagnostic work. Power can be present from shore power, generator, inverter or battery. All power sources must be disabled and secured before performing any service.



CAUTION

If you lack the skills, tools or equipment to perform diagnostic or repair work leave such work to an authorized Winnebago Industries dealer or other qualified shop.

H
G
F
E
D
C
B
A



- ⑨ PRE-WIRE BOX LOCATED IN REAR END OF DVHD CABT WITH TWIN BEDS.
 - ⑧ WITH FACTORY A/C ONLY.
 - ⑦ INSTALL RECP WITH GROUND TOWARD BOTTOM OF VEHICLE.
 - ⑥ 14M GEN-3.0KW., GENERAC. GAS.
 - ⑤ SEE GENERATOR INSTL FOR ADDITIONAL INFORMATION.
 - ④ NOT USED WITH 29K A/C. ROOF-ONE 7.100.
3. ALL GROUND WIRES TO BE COVERED WITH TUBING 8041-02-000.
2. ALL WIRES ARE TO BE CLAMPED WITH CLAMP 10497-05-000 WITHIN 200 OF OUTLET BOXES. USE SCREW G67-10-12B.
1. ALL WIRES TO BE CLAMPED WITH CLAMP 10495-01-000 OR CLIP 80734-01-000 EVERY 600. USE SCREW G67-10-12B UNLESS OTHERWISE SPECIFIED.

FOR ELECTRICAL TORQUE SPECIFICATIONS SEE DWG NO. 126783-01-000

(X-X) FOR ELECTRICAL CALLOUTS SEE DWG NO. 121339-01-000

98 222RC
IBI CODE STANDARD-USA

		98 222RC
QTY	DATE	UNSPECIFIED TOLERANCES ARE:
CHP	DATE	WHOLE DIMS .01
FPC	DATE	ONE-PLACE (R. .01)
FLE	DATE	TWO-PLACE (R. .005)
CON	DATE	THREE-PLACE (R. .001)
COL	DATE	INDICATED
LANE	DATE	INDICATED
TITLE: WIRING INSTL-BODY (110130US)		SHEET 1 OF 14
REF: 124668-D GS/BZ	126969	126969

FROM LEFT SIDE
RECP-GALLEY, LH
TO RIGHT SIDE
RECP-TABLE

4

RCP-2
TABLE

GFI-US
NIGHTSTAND

SWITCH-WATER HEATER
84420-01-000
LABEL
83588-01-000

RCP-E
EXTERIOR 5

LOAD CENTER
(SEE SHT 4)

FROM LEFT SIDE
A/C, ROOF
TO RIGHT SIDE
CONTROL CENTER

FROM LEFT SIDE
RECP-MICROWAVE
TO RIGHT SIDE
CONTROL CENTER

FROM LEFT SIDE
RECP-GALLEY, LH
TO RIGHT SIDE
RECP-EXTERIOR

FROM LEFT SIDE
POWER CORD 4X4 BOX
TO RIGHT SIDE
CONTROL CENTER

FROM LEFT SIDE
WATER HEATER
TO RIGHT SIDE
WATER HEATER SWITCH

FROM LEFT SIDE
RECP-CONVERTER
TO RIGHT SIDE
CONTROL CENTER

- 5 SEAL BACK SIDE OF RECP FACE.
- 4 WIRE ROUTED THRU SIDEWALL.
3. ALL GROUND WIRES TO BE COVERED WITH TUBING 8041-02-000.
2. ALL WIRES ARE TO BE CLAMPED WITH CLAMP 10497-05-000 WITHIN 200 OF OUTLET BOXES. USE SCREW G67-10-12B.
1. ALL WIRES TO BE CLAMPED WITH CLAMP 10495-01-000 OR CLIP 80734-01-000 EVERY 600. USE SCREW G67-10-12B UNLESS OTHERWISE SPECIFIED.

NOTES:

FOR ELECTRICAL
TORQUE
SPECIFICATIONS
SEE DWG NO.
128783-01-000

FOR
ELECTRICAL
CALLOUTS
SEE DWG NO.
121339-01-000

97 222RC
181 CODE STANDARDS-USA
44V BED-DOUBLE, SIDEWALL

WIRING INSTL-BODY(11OR30US)
SHEET 2 OF 14
126969

FROM LEFT SIDE
RECP-GALLEY
TO RIGHT SIDE
RECP-TABLE

RCP-2
TABLE

4

SWITCH-WATER HEATER
84420-01-000
LABEL
83588-01-000

RCP-E
EXTERIOR

LOAD CENTER
(SEE SHT 4)

GFT-US
NIGHTSTAND

FROM LEFT SIDE
RECP-MICROWAVE
TO RIGHT SIDE
CONTROL CENTER

FROM LEFT SIDE
A/C ROOF
TO RIGHT SIDE
CONTROL CENTER

FROM LEFT SIDE
POWER CORD 4X4 BOX
TO RIGHT SIDE
CONTROL CENTER

FROM LEFT SIDE
WATER HEATER
TO RIGHT SIDE
WATER HEATER SWITCH

FROM LEFT SIDE
RECP-CONVERTER
TO RIGHT SIDE
CONTROL CENTER

FROM LEFT SIDE
RECP-GALLEY LH
TO RIGHT SIDE
RECP-EXTERIOR

- 5 SEAL BACK SIDE OF RECP FACE.
- 4 WIRE ROUTED IN SIDEWALL.
- 3. ALL GROUND WIRES TO BE COVERED WITH TUBING 8011-02-000.
- 2. ALL WIRES ARE TO BE CLAMPED WITH CLAMP 10497-05-000 WITHIN 200 OF OUTLET BOXES. USE SCREW G67-10-12B.
- 1. ALL WIRES TO BE CLAMPED WITH CLAMP 10495-01-000 OR CLIP 80734-01-000 EVERY 600. USE SCREW G67-10-12B UNLESS OTHERWISE SPECIFIED.

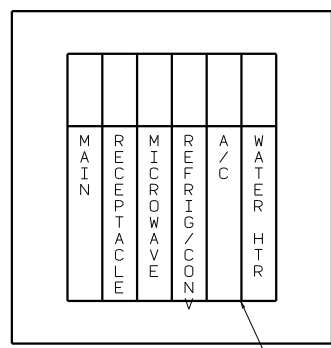
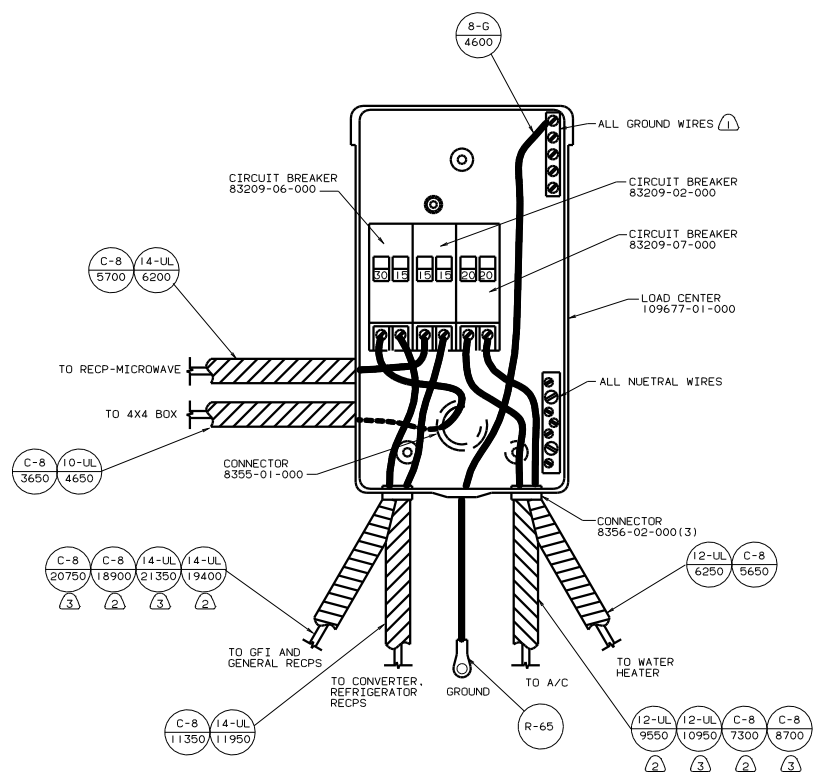
NOTES:

FOR ELECTRICAL
TORQUE
SPECIFICATIONS
SEE DWG NO.
128783-01-000

FOR
ELECTRICAL
CALLOUTS
SEE DWG NO.
121339-01-000

98 222RC
45G BED-TWINS
1B1 CODE STANDARDS-USA

WIRING INSTL-BODY(11OR30US)
SHEET 3 OF 14
124668



INSTALL LABEL ON BACK SIDE OF CABINET ACCESS DOOR.
 LABEL 95721-15-000

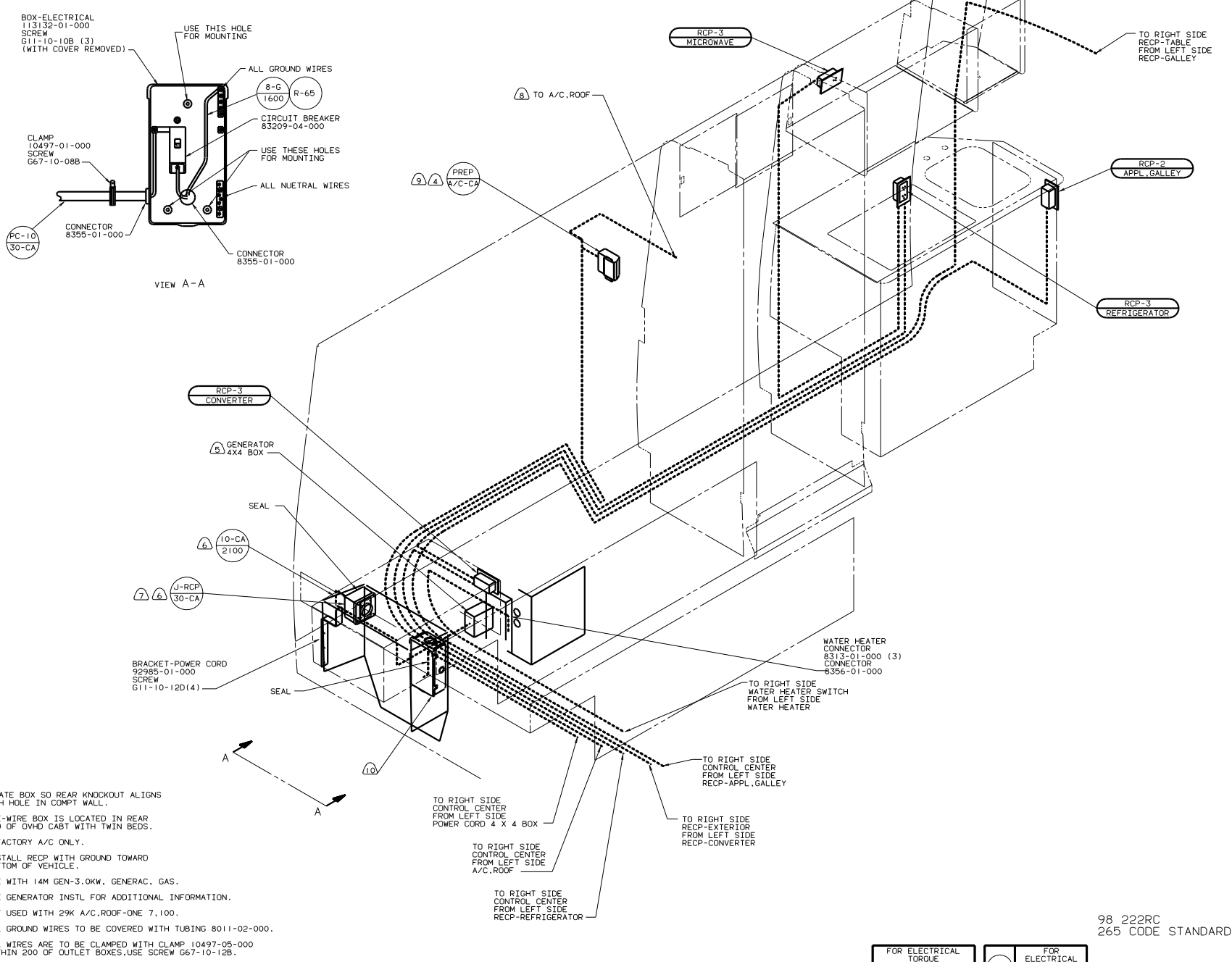
- 3 45G BED-TWINS.
2 44V BED-DOUBLE, SIDEWALL.
1 ALL GROUND WIRES TO BE COVERED WITH TUBING 8041-02-000.

FOR ELECTRICAL TORQUE SPECIFICATIONS SEE DWS NO. 128783-01-000

FOR ELECTRICAL CALLOUTS SEE DWS NO. 121339-01-000

LOAD CENTER (US)
 98 222RC
 IBI CODE STANDARDS-USA

TITLE		WIRING INSTL-BODY(30 LC US)	
DATE	BY	DATE	BY
10/21/04	5000	10/21/04	5000
SHEET 4 of 14		JOB NO 126969	



BOX-ELECTRICAL
113132-01-000
SCREW
G11-10-108 (3)
(WITH COVER REMOVED)

USE THIS HOLE
FOR MOUNTING

ALL GROUND WIRES

8-D
1600 R-65

CIRCUIT BREAKER
83209-04-000

USE THESE HOLES
FOR MOUNTING

ALL NUETRAL WIRES

CLAMP
10497-01-000
SCREW
G67-10-08B

PC-10
30-CA

CONNECTOR
8355-01-000

CONNECTOR
8355-01-000

VIEW A-A

RCP-3
CONVERTER

5
GENERATOR
4X4 BOX

SEAL

6
10-CA
2100

7
6
J-RCP
30-CA

BRACKET-POWER CORD
92985-01-000
SCREW
G11-10-12D(4)

SEAL

WATER HEATER
CONNECTOR
8313-01-000 (3)
CONNECTOR
8356-01-000

TO RIGHT SIDE
WATER HEATER SWITCH
FROM LEFT SIDE
WATER HEATER

TO RIGHT SIDE
CONTROL CENTER
FROM LEFT SIDE
RECP-APPL. GALLEY

TO RIGHT SIDE
CONTROL CENTER
FROM LEFT SIDE
POWER CORD 4 X 4 BOX

TO RIGHT SIDE
CONTROL CENTER
FROM LEFT SIDE
A/C, ROOF

TO RIGHT SIDE
CONTROL CENTER
FROM LEFT SIDE
RECP-REFRIGERATOR

10 LOCATE BOX SO REAR KNOCKOUT ALIGNS
WITH HOLE IN COMPT WALL.

9 PRE-WIRE BOX IS LOCATED IN REAR
END OF OVHD CABT WITH TWIN BEDS.

8 W/FACORY A/C ONLY.

7 INSTALL RECP WITH GROUND TOWARD
BOTTOM OF VEHICLE.

6 USE WITH 14M GEN-3.0KW. GENERAC. GAS.

5 SEE GENERATOR INSTL FOR ADDITIONAL INFORMATION.

4 NOT USED WITH 29K A/C, ROOF-ONE 7.100.

3. ALL GROUND WIRES TO BE COVERED WITH TUBING 8011-02-000.

2. ALL WIRES ARE TO BE CLAMPED WITH CLAMP 10497-05-000
WITHIN 200 OF OUTLET BOXES. USE SCREW G67-10-12B.

1. ALL WIRES TO BE CLAMPED WITH CLAMP 10495-01-000 OR
CLIP 80734-01-000 EVERY 600. USE SCREW G67-10-12B
UNLESS OTHERWISE SPECIFIED.

NOTES:

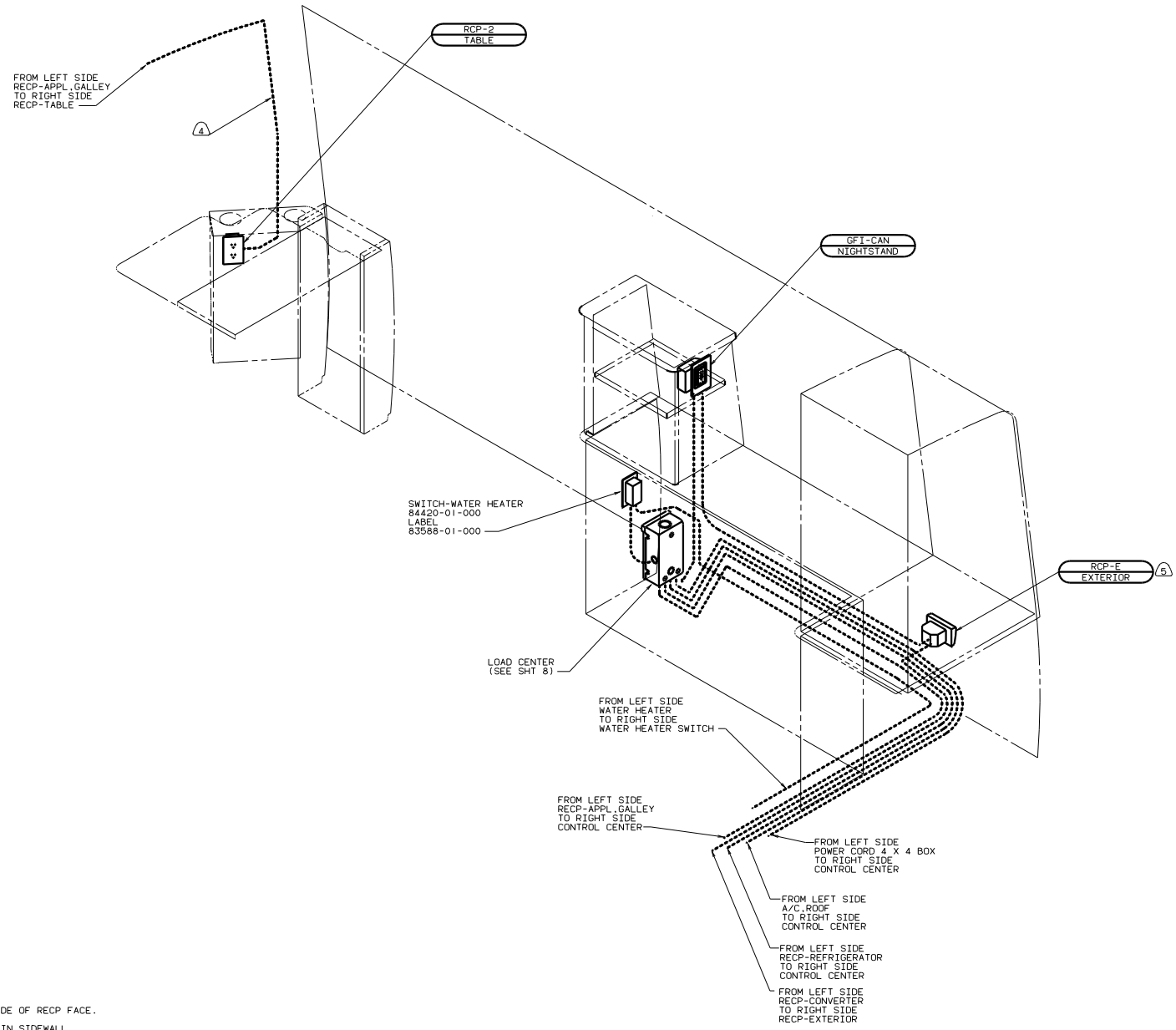
FOR ELECTRICAL
TORQUE
SPECIFICATIONS
SEE DWG NO.
128783-01-000

X-X

FOR
ELECTRICAL
CALLOUTS
SEE DWG NO.
121339-01-000

88 222RC
265 CODE STANDARDS-CSA

TITLE: WIRING INSTL-BODY(110130CAN)
SHEET 5 OF 14
126969



- 5) SEAL BACK SIDE OF RECP FACE.
- 4) WIRE ROUTED IN SIDEWALL.
- 3. ALL GROUND WIRES TO BE COVERED WITH TUBING 8011-02-000.
- 2. ALL WIRES ARE TO BE CLAMPED WITH CLAMP 10497-05-000 WITHIN 200 OF OUTLET BOXES. USE SCREW G67-10-12B.
- 1. ALL WIRES TO BE CLAMPED WITH CLAMP 10495-01-000 OR CLIP 80734-01-000 EVERY 600. USE SCREW G67-10-12B UNLESS OTHERWISE SPECIFIED.

NOTES:

FOR ELECTRICAL
TORQUE
SPECIFICATIONS
SEE DWG NO.
128783-01-000

FOR
ELECTRICAL
CALLOUTS
SEE DWG NO.
121339-01-000

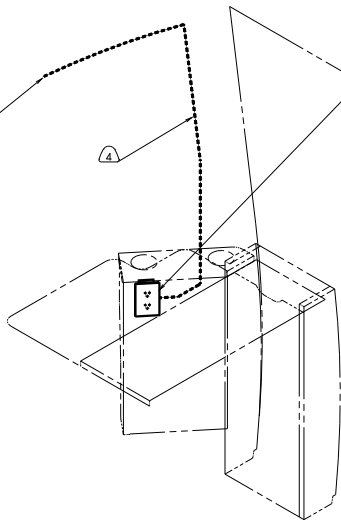
98 222RC
44V BED-DOUBLE SIDEWALL
265 CODE STANDARDS-CSA

TITLE: WIRING INSTL-BODY(110R30CAN)
DWG NO: 126969
SHEET 6 OF 14

FROM LEFT SIDE
RECP-APPL. GALLEY
TO RIGHT SIDE
RECP-TABLE

RCP-2
TABLE

4



SWITCH-WATER HEATER
84420-01-000
LABEL
83588-01-000

LOAD CENTER
(SEE SHT 8)

FROM LEFT SIDE
WATER HEATER
TO RIGHT SIDE
WATER HEATER SWITCH

RCP-E
EXTERIOR

5

GFT-CAN
NIGHTSTAND

FROM LEFT SIDE
POWER CORD 4 X 4 BOX
TO RIGHT SIDE
CONTROL CENTER

FROM LEFT SIDE
A/C ROOF
TO RIGHT SIDE
CONTROL CENTER

FROM LEFT SIDE
RECP-REFRIGERATOR
TO RIGHT SIDE
CONTROL CENTER

FROM LEFT SIDE
RECP-CONVERTER
TO RIGHT SIDE
RECP-EXTERIOR

FROM LEFT SIDE
RECP-APPL. GALLEY
TO RIGHT SIDE
CONTROL CENTER

5 SEAL BACK SIDE OF RECP FACE.

4 WIRE ROUTED IN SIDEWALL.

3. ALL GROUND WIRES TO BE COVERED WITH TUBING 8011-02-000.

2. ALL WIRES ARE TO BE CLAMPED WITH CLAMP 10497-05-000 WITHIN 200 OF OUTLET BOXES. USE SCREW G67-10-12B.

1. ALL WIRES TO BE CLAMPED WITH CLAMP 10495-01-000 OR CLIP 80734-01-000 EVERY 600. USE SCREW G67-10-12B UNLESS OTHERWISE SPECIFIED.

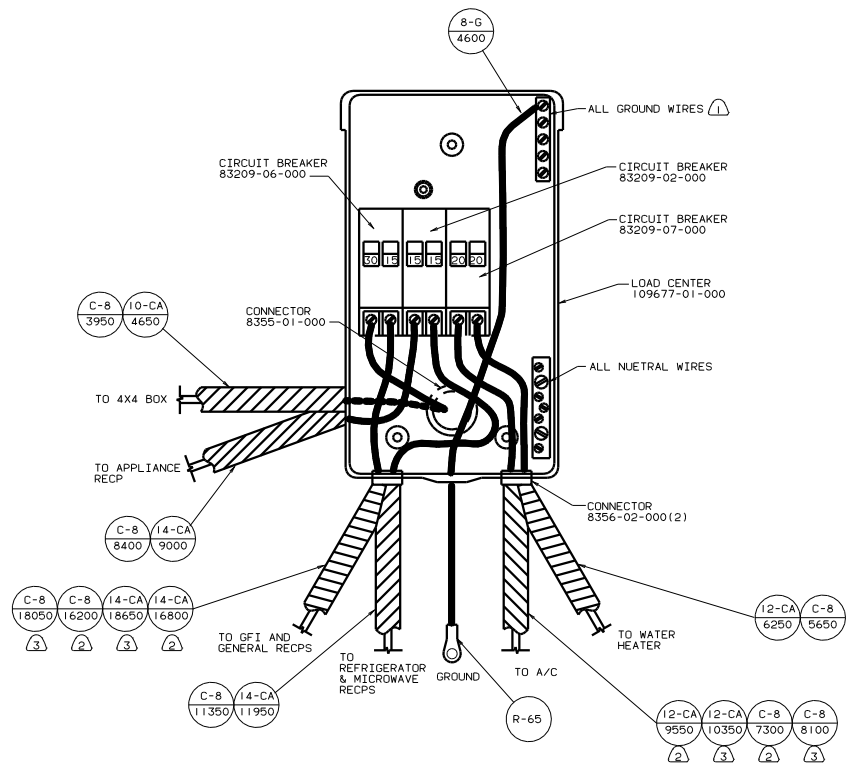
NOTES:

98 222RC
45G BED-TWINS
265 CODE STANDARDS-CSA

FOR ELECTRICAL
TORQUE
SPECIFICATIONS
SEE DWG NO.
128783-01-000

FOR
ELECTRICAL
CALLOUTS
SEE DWG NO.
121339-01-000

TITLE: WIRING INSTL-BODY(110R30CAN)
SHEET 7 OF 15



M	R	A	R	A	W
A	E	P	E	W	A
I	C	P	R	A	T
N	C	L	/	H	R

INSTALL LABEL ON BACK SIDE OF CABINET ACCESS DOOR.
 LABEL 95721-16-000

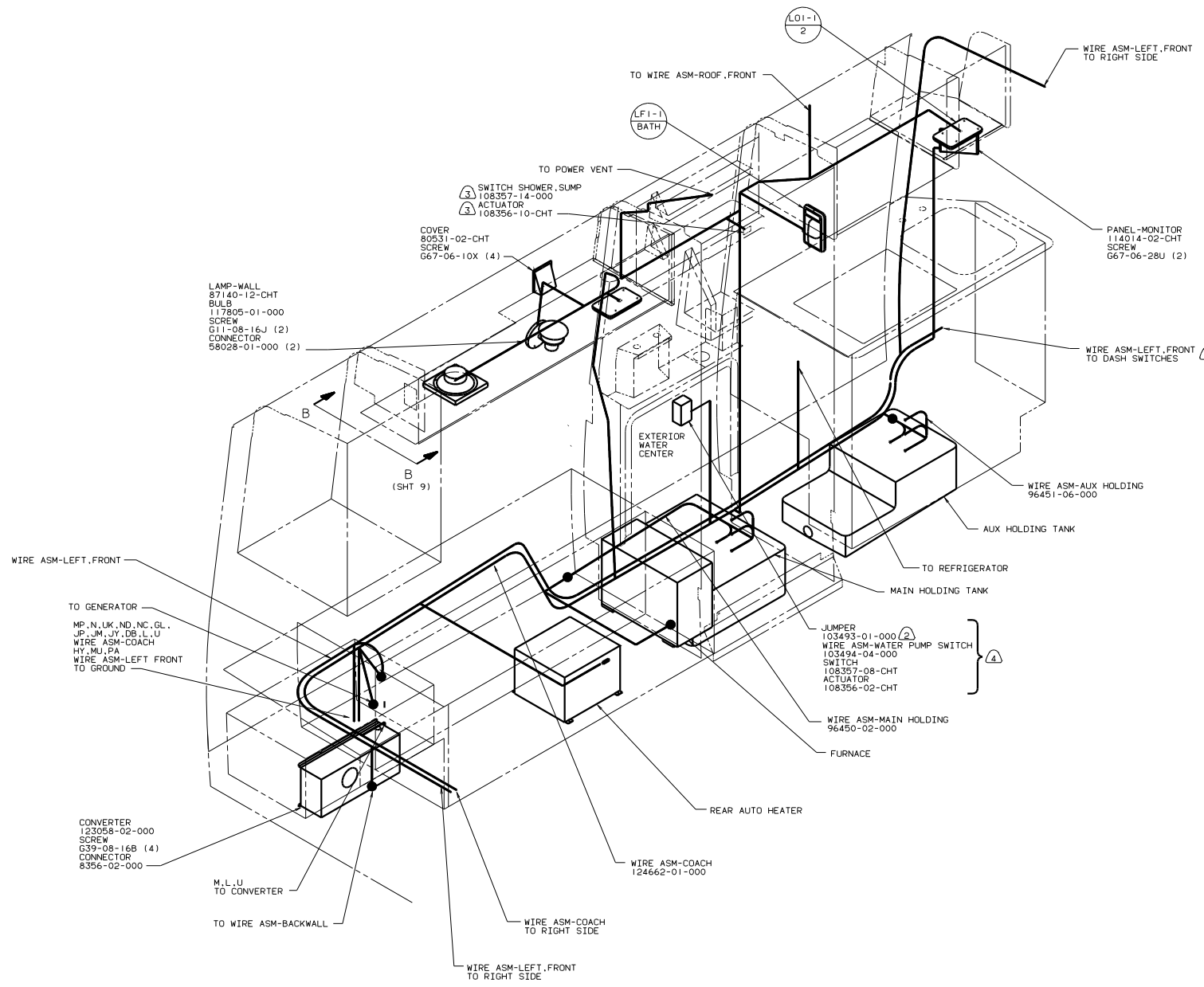
- NOTES:
- (3) WITH TWIN BEDS.
 - (2) WITH DOUBLE BED.
 - (1) ALL GROUND WIRES TO BE COVERED WITH TUBING 8041-02-000.

FOR ELECTRICAL TORQUE SPECIFICATIONS SEE DWG NO. 128763-01-000.

FOR ELECTRICAL CALLOUTS SEE DWG NO. 121339-01-000.

LOAD CENTER (CAN)
 98 222RC
 265 CODE STANDARDS-CSA

TITLE: WIRING INSTL-BODY(30 LC CAN)	
NO. OF SHEETS: 14	SHEET: 8 OF 14
DATE: 11/11/05	DWG NO: 126969



LAMP-WALL
87140-12-CHT
BULB
117805-01-000
SCREW
G11-08-16J (2)
CONNECTOR
58028-01-000 (2)

COVER
80531
SCREW
G67-06-10X (4)

SWITCH SHOWER, PUMP
ACTUATOR
108357-14-000

108356-10-CHT

PANEL-MONITOR
114014-02-CHT
SCREW
G67-06-28U (2)

WIRE ASM-LEFT.FRONT

TO GENERATOR

MP, N, UK, ND, NC, GL,
JP, UM, JV, DB, L, U
WIRE ASM-COACH
HY, MU, PA
WIRE ASM-LEFT FRONT
TO GROUND

CONVERTER
123058-02-000
SCREW
G39-08-16B (4)
CONNECTOR
8356-02-000

M.L.U.
TO CONVERTER

TO WIRE ASM-BACKWALL

WIRE ASM-COACH
124662-01-000

WIRE ASM-LEFT.FRONT
TO RIGHT SIDE

WIRE ASM-LEFT.FRONT
TO RIGHT SIDE

EXTERIOR
WATER
CENTER

JUMPER
103493-01-000 (2)

WIRE ASM-WATER PUMP SWITCH
103494-04-000

SWITCH
108357-08-CHT

ACTUATOR
108356-02-CHT

WIRE ASM-MAIN HOLDING
96450-02-000

FURNACE

REAR AUTO HEATER

TO REFRIGERATOR

MAIN HOLDING TANK

WIRE ASM-AUX HOLDING
96451-06-000

AUX HOLDING TANK

WIRE ASM-LEFT.FRONT
TO DASH SWITCHES

WIRE ASM-LEFT.FRONT
TO RIGHT SIDE

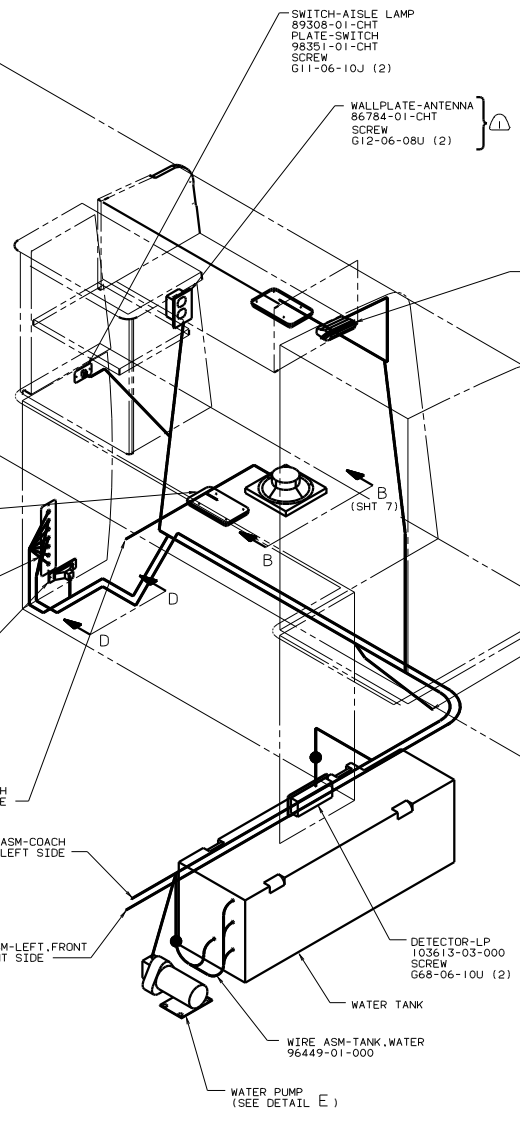
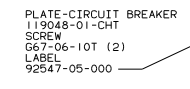
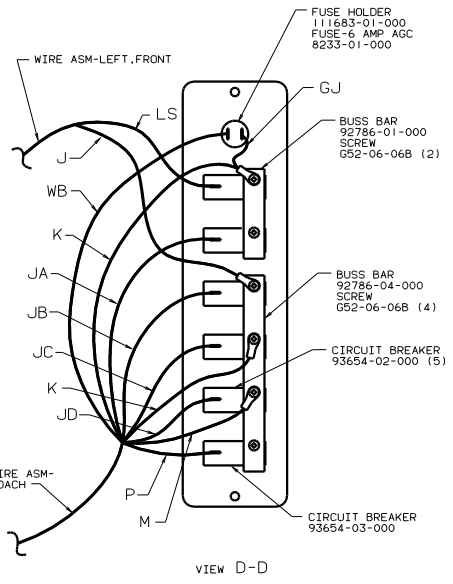
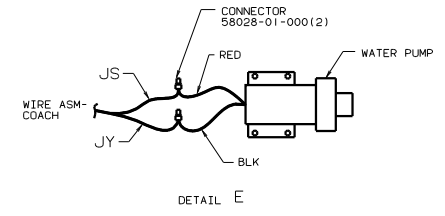
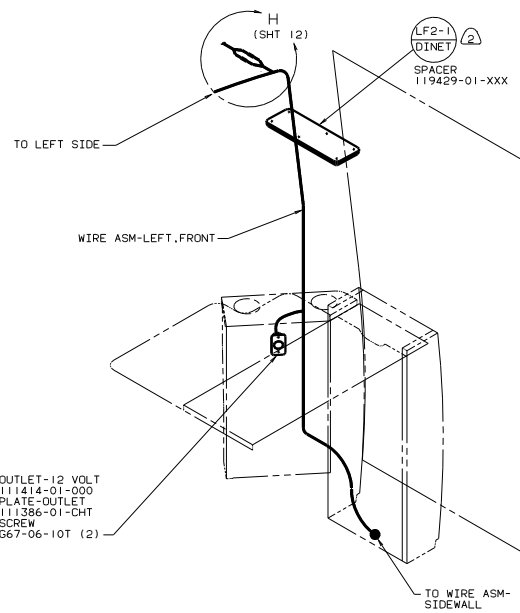
- NOTES:
- ④ 64R EXTERIOR SHOWER PACKAGE.
 - ③ 140 SHOWER PACKAGE.
 - ② NOT USED WITH 64R EXTERIOR WASHER STATION.
 - ① SEE DRAWING INSTL-FRONT END FOR ADDITIONAL INFORMATION.

FOR ELECTRICAL
TORQUE
SPECIFICATIONS
SEE DWG NO.
128783-01-000

FOR
ELECTRICAL
CALLOUTS
SEE DWG NO.
121339-01-000

12V LEFT (US/CAN)
98 222RC
45G BED-TWINS
1B1 CODE STANDARDS-USA
265 CODE STANDARDS-CSA

TITLE: WIRING INSTL-BODY (12 L)
SHEET 10 OF 14



NOTES:

(2) PILOT HOLES MUST BE DRILLED FOR SCREW CLEARANCE.

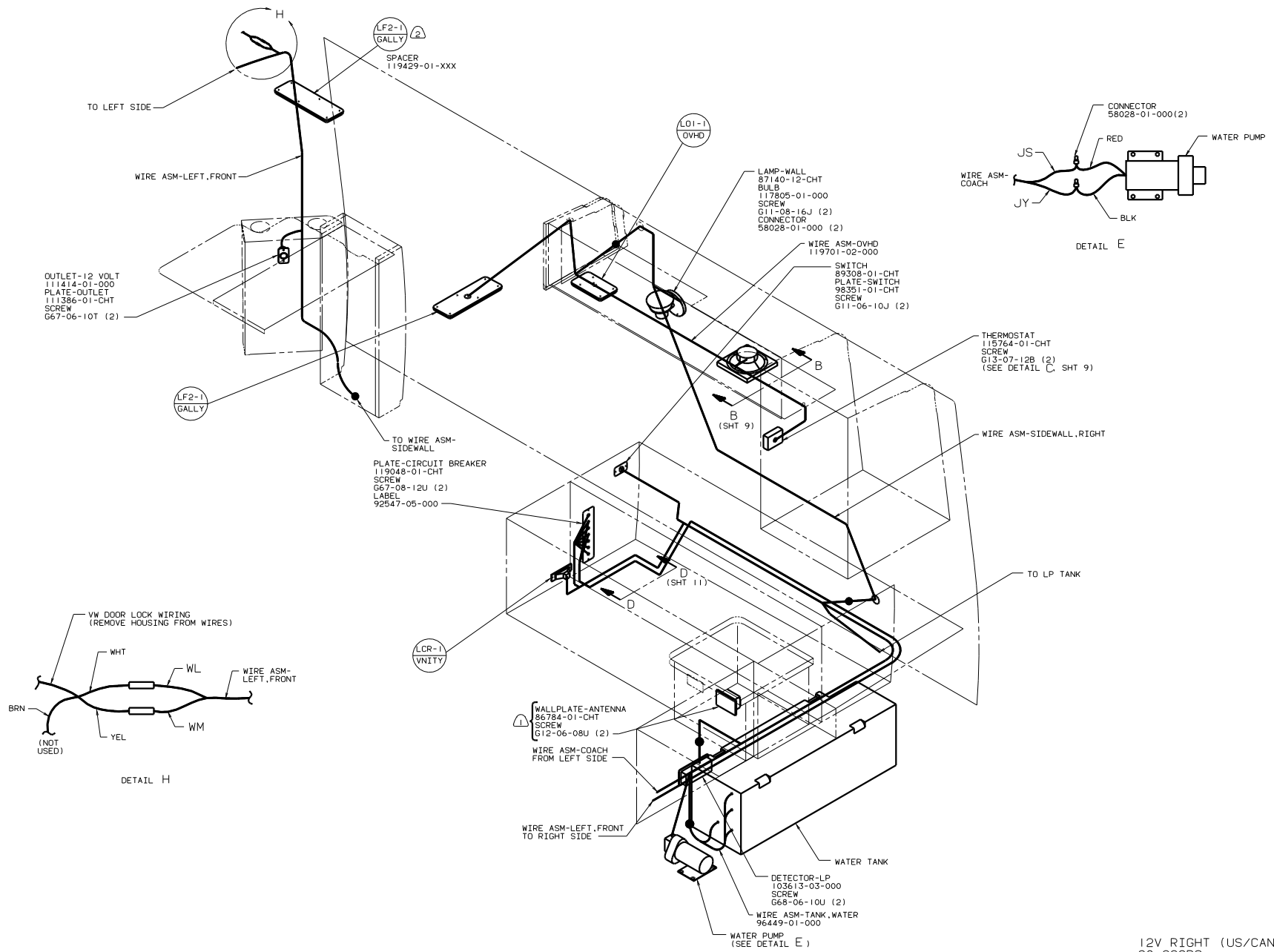
(1) W/TV ANTENNA.

FOR ELECTRICAL
TORQUE
SPECIFICATIONS
SEE DWG NO.
128783-01-000

FOR
ELECTRICAL
CALLOUTS
SEE DWG NO.
121339-01-000

12V RIGHT (US/CAN)
98 222RC
44V BED-DOUBLE, SIDEWALL
1B1 CODE STANDARDS-USA
265 CODE STANDARDS-CSA

TITLE: WIRING INSTL-BODY(12_R)
SHEET 11 OF 14

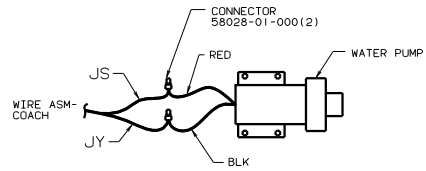


OUTLET-12 VOLT
111414-01-000
PLATE-OUTLET
111386-01-CHT
SCREW
G67-06-10T (2)

LF2-1
GALLY (2)
SPACER
119429-01-XXX

LAMP-WALL
87140-12-CHT
BULB
117805-01-000
SCREW
G11-08-16J (2)
CONNECTOR
58028-01-000 (2)

WIRE ASM-OVHD
119701-02-000
SWITCH
89308-01-CHT
PLATE-SWITCH
98351-01-CHT
SCREW
G11-06-10J (2)



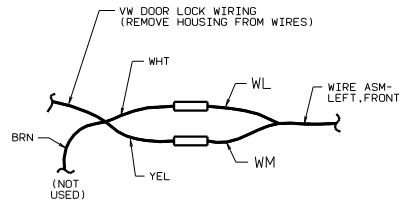
DETAIL E

THERMOSTAT
115764-01-CHT
SCREW
G13-07-12B (2)
(SEE DETAIL C, SHT 9)

PLATE-CIRCUIT BREAKER
119048-01-CHT
SCREW
G67-08-12U (2)
LABEL
92547-05-000

WALLPLATE-ANTENNA
86784-01-CHT
SCREW
G12-06-08U (2)
WIRE ASM-COACH
FROM LEFT SIDE

DETECTOR-LP
103613-03-000
SCREW
G68-06-10U (2)
WIRE ASM-TANK,WATER
96449-01-000



DETAIL H

12V RIGHT (US/CAN)
98 222RC
45G BED-TWINS
1B1 CODE STANDARDS-USA
265 CODE STANDARDS-CSA

(2) PILOT HOLES MUST BE DRILLED FOR SCREW CLEARANCE.

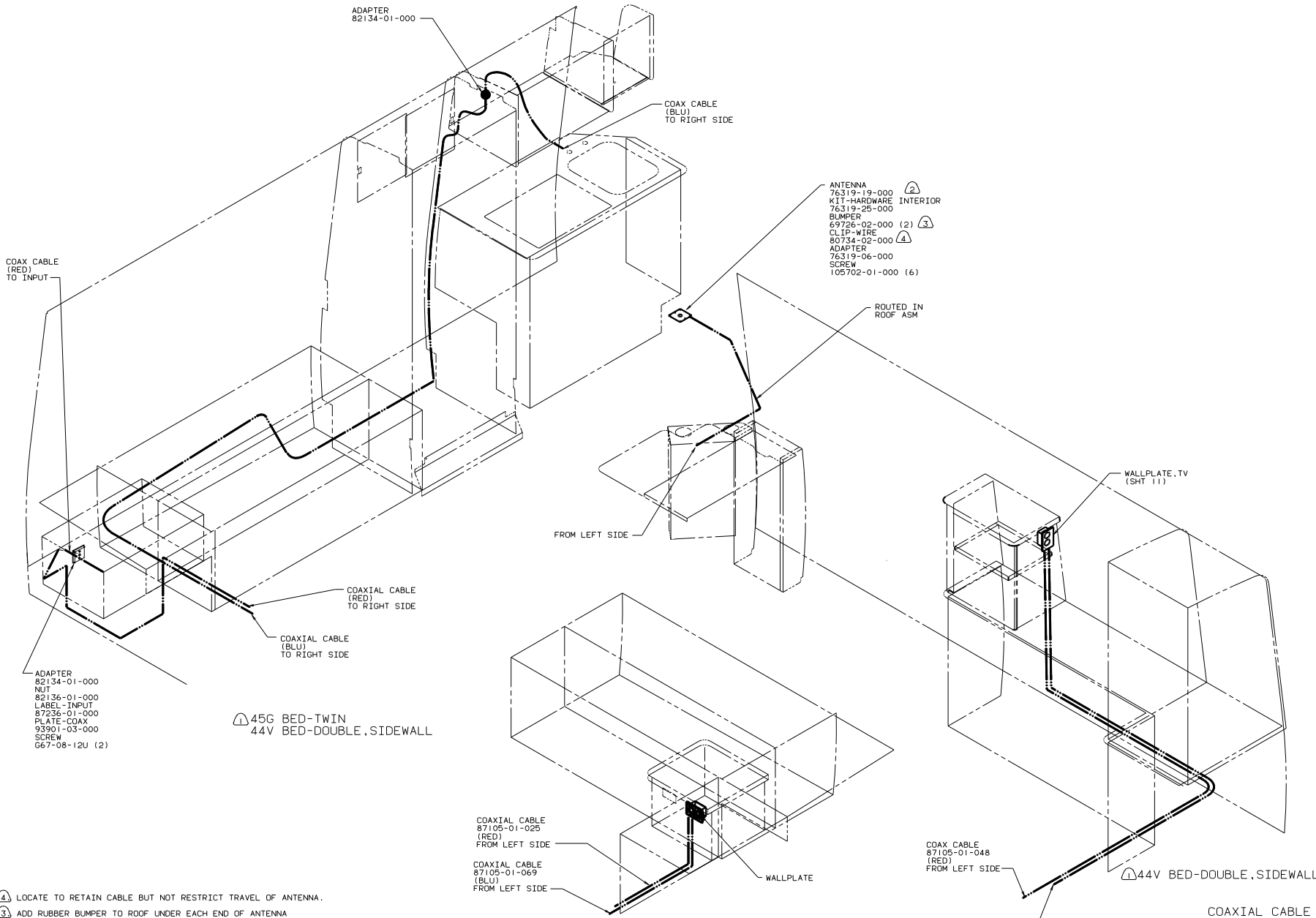
(1) 193 TV ANTENNA.

NOTES:

FOR ELECTRICAL
TORQUE
SPECIFICATIONS
SEE DWG NO.
128783-01-000

FOR
ELECTRICAL
CALLOUTS
SEE DWG NO.
121339-01-000

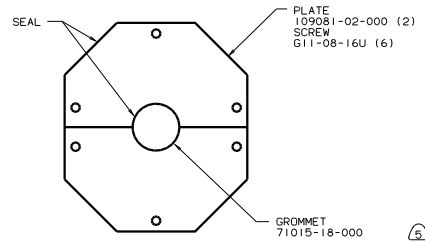
TITLE: WIRING INSTL-BODY(12_R)
SHEET 12 OF 14



- (1) 193 TV ANTENNA.
- (2) SEE DRAWING 76319-01-000 FOR ADDITIONAL INFORMATION.
- (3) ADD RUBBER BUMPER TO ROOF UNDER EACH END OF ANTENNA IN DOWN POSITION WHICH MAY IN CONTACT WITH ROOF.
- (4) LOCATE TO RETAIN CABLE BUT NOT RESTRICT TRAVEL OF ANTENNA.

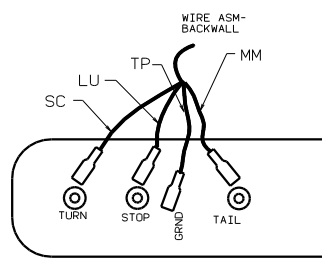
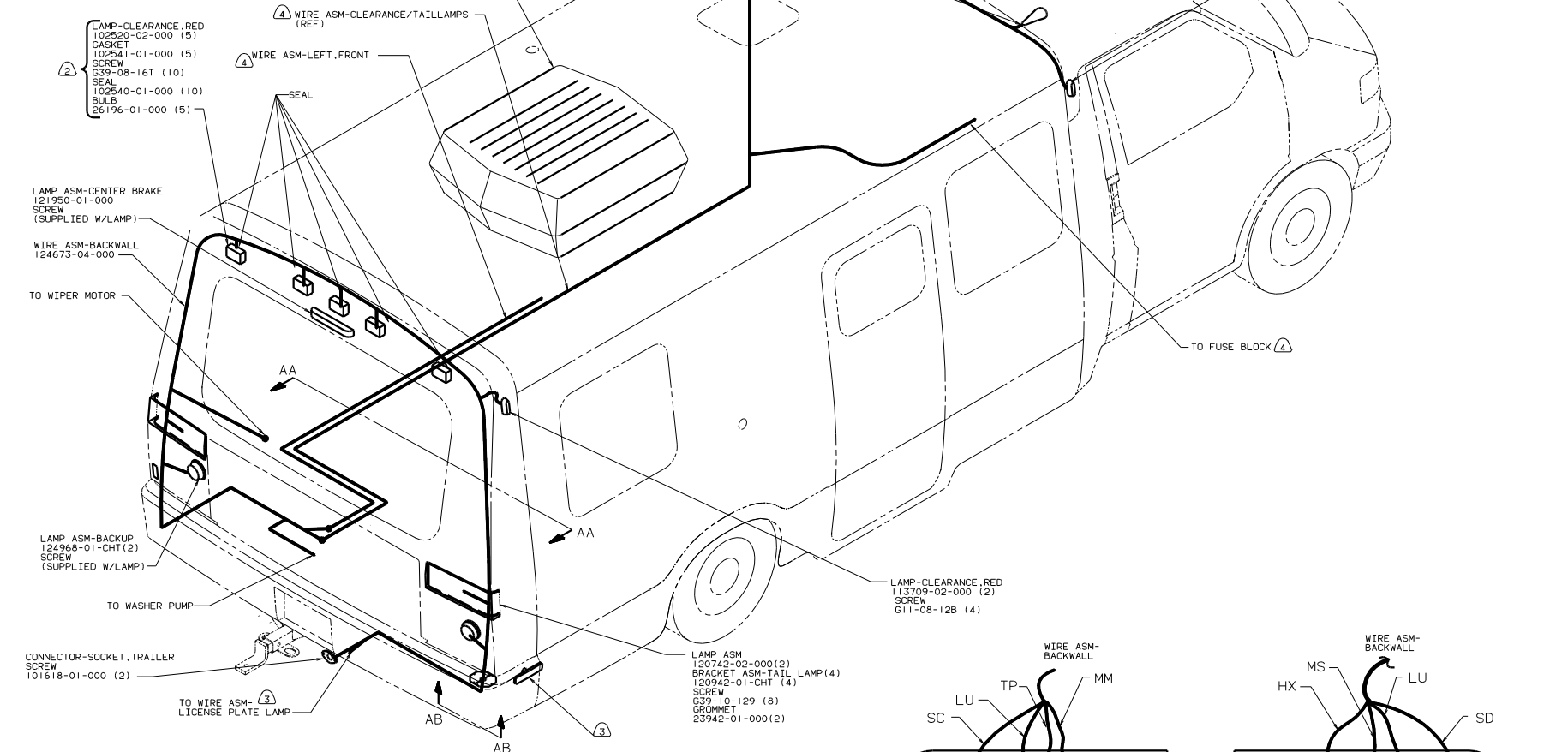
FOR ELECTRICAL TORQUE SPECIFICATIONS SEE DWG NO 128783-01-000

TITLE: WIRING INSTL-BODY(COAX)	
NO. OF SHEETS DRAWING	TOT. SHEETS
SHEET 13 OF 14	13
DWG NO 126969	

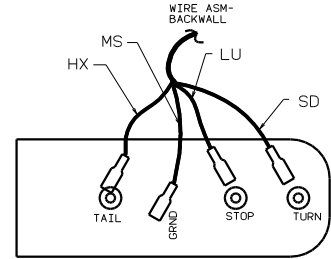


VIEW AB-AB

AIR CONDITIONER
93306-01-CHT
CEILING ASM
93307-03-000
SPRING A/C
102289-01-000 (4)



RIGHT SIDE



LEFT SIDE

DETAIL AA (STD)
(FROM BACK SIDE
OF TAIL LAMPS)

98 222RC/RT
1B1 CODE STANDARDS-USA
265 CODE STANDARDS-CSA

FOR ELECTRICAL
TORQUE
SPECIFICATIONS
SEE DWG NO.
128783-01-000

TITLE: WIRING INSTL-BODY
SHEET 14 OF 14
126969

- ① CONNECT WIRE HX (PUR) TO RED WIRE AND WIRE MS (GRN) TO WHT WIRE.
 - ② 29K A/C, ROOF-ONE 7,100.
 - ③ SEE WIRING INSTL-FRONT END FOR ADDITIONAL INFORMATION.
 - ④ SEE BUMPER ASM-REAR FOR ADDITIONAL INFORMATION.
 - ⑤ LOCATE ON CENTER OF HOLE IN CAP ASM-REAR.
1. CONNECTOR-PLUG, TRAILER 113589-01-000 TO BE SUPPLIED LOOSE IN COACH WITH TRAILER TOW PACKAGE.