



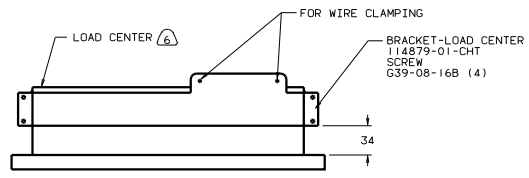
DANGER

Danger of electrical shock, burns or death. Always remove all power sources before attempting any repair, service or diagnostic work. Power can be present from shore power, generator, inverter or battery. All power sources must be disabled and secured before performing any service.

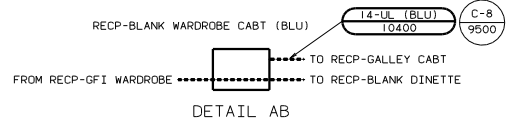
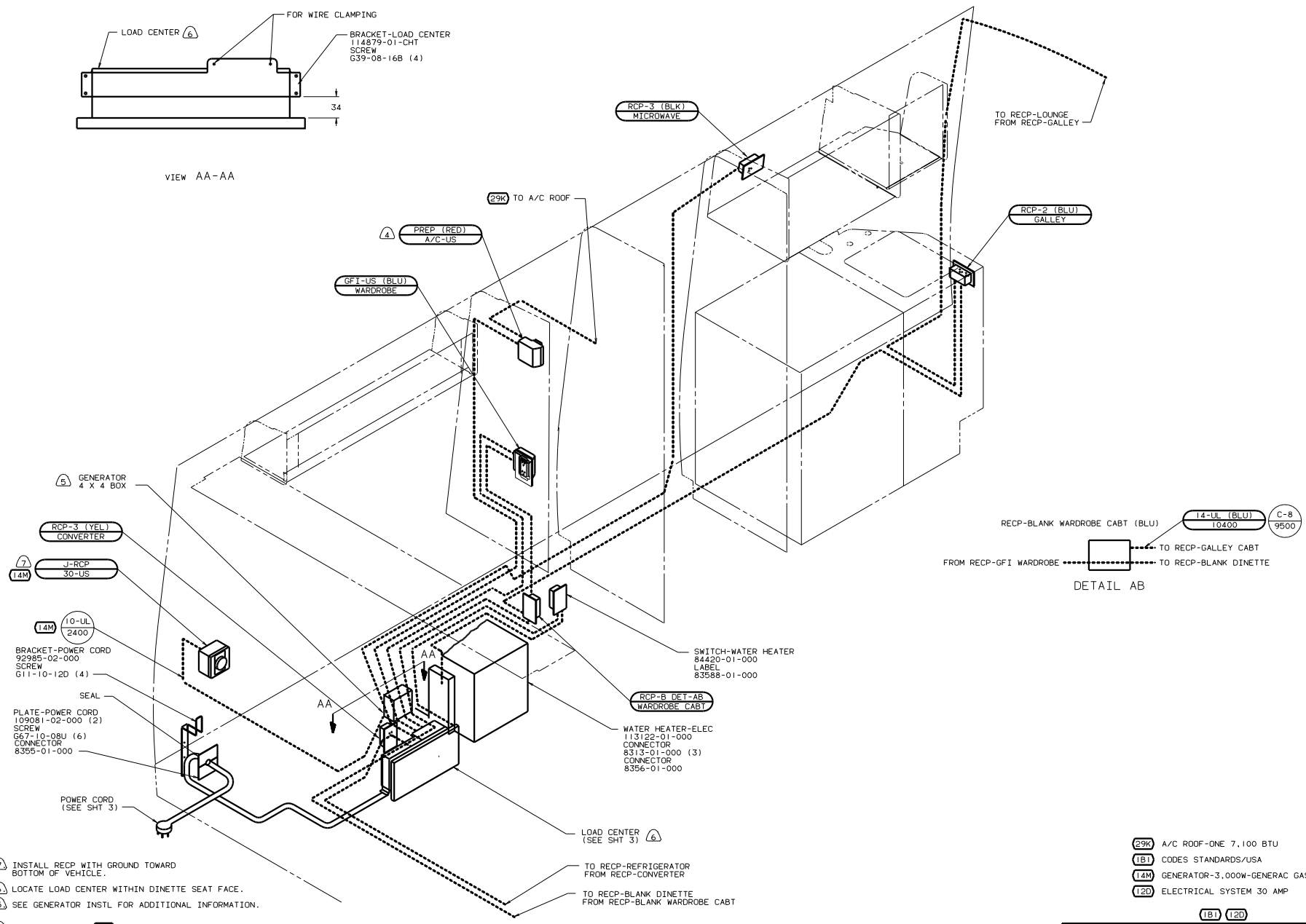


CAUTION

If you lack the skills, tools or equipment to perform diagnostic or repair work leave such work to an authorized Winnebago Industries dealer or other qualified shop.



VIEW AA-AA



- BRACKET-POWER CORD
92985-02-000
SCREW
G11-10-12D (4)
- SEAL
- PLATE-POWER CORD
109081-02-000 (2)
SCREW
G67-10-08U (6)
CONNECTOR
8355-01-000
- POWER CORD
(SEE SHT 3)

- SWITCH-WATER HEATER
84420-01-000
LABEL
83588-01-000
- WATER HEATER-ELEC
CONNECTOR
8313-01-000 (3)
CONNECTOR
8356-01-000

- (7) INSTALL RECP WITH GROUND TOWARD BOTTOM OF VEHICLE.
- (6) LOCATE LOAD CENTER WITHIN DINETTE SEAT FACE.
- (5) SEE GENERATOR INSTL FOR ADDITIONAL INFORMATION.
- (4) NOT USED WITH (29K)

- LOAD CENTER (SEE SHT 3) (6)
- TO RECP-REFRIGERATOR FROM RECP-CONVERTER
- TO RECP-BLANK DINETTE FROM RECP-BLANK WARDROBE CABT

- 3. ALL GROUND WIRES TO BE COVERED WITH TUBING 8041-02-000.
- 2. ALL WIRES ARE TO BE CLAMPED WITH CLAMP 10497-05-000 WITHIN 200 OF OUTLET BOXES. USE SCREW G67-10-12B.
- 1. ALL WIRES TO BE CLAMPED WITH CLAMP 10495-01-000 OR CLIP 80734-01-000 EVERY 600. USE SCREW G67-10-12B UNLESS OTHERWISE SPECIFIED.

- (29K) A/C ROOF-ONE 7,100 BTU
- (1B1) CODES STANDARDS/USA
- (14M) GENERATOR-3,000W-GENERAC GAS
- (12D) ELECTRICAL SYSTEM 30 AMP

FOR ELECTRICAL SPECIFICATIONS SEE DWG NO. 128783-01-000

(X-X) FOR ELECTRICAL CALLOUTS SEE DWG NO. 121339-01-000

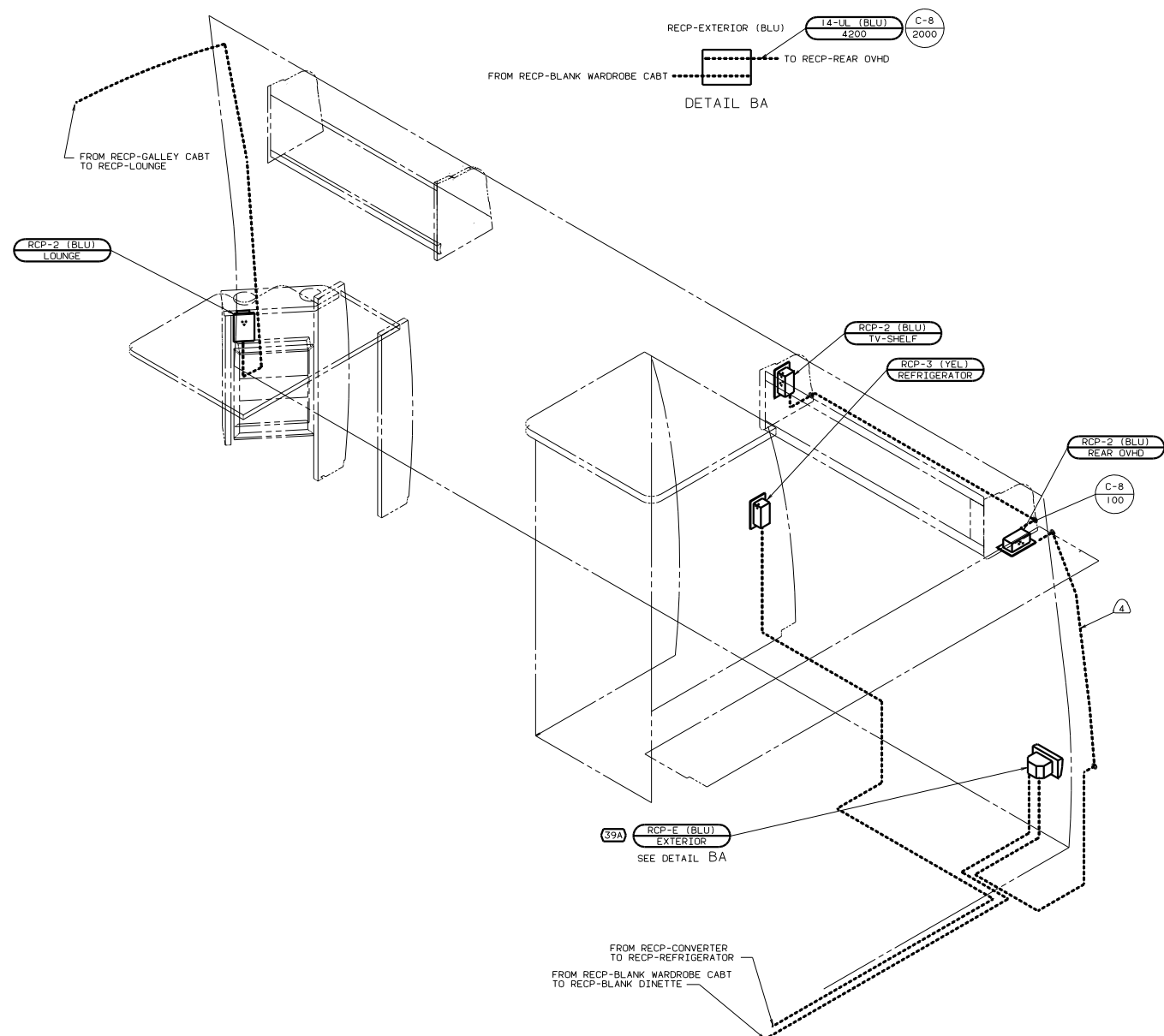
WINNEBAGO 99 222HD

OF 11	DATE	UNSPECIFIED TOLERANCES ARE:	MATERIAL
CHP	DATE	WHOLE DIM (1)	
DFE	DATE	ONE-PLACE (1X.X1)	
D/E	DATE	TWO-PLACE (1X.XX)	
CON	DATE	THREE-PLACE (1X.XXX)	
DRG	DATE	INDIC. WHOLE DIMENSIONS	

WIRING INSTL-BODY (110130US)

SHEET 1 OF 10

131115



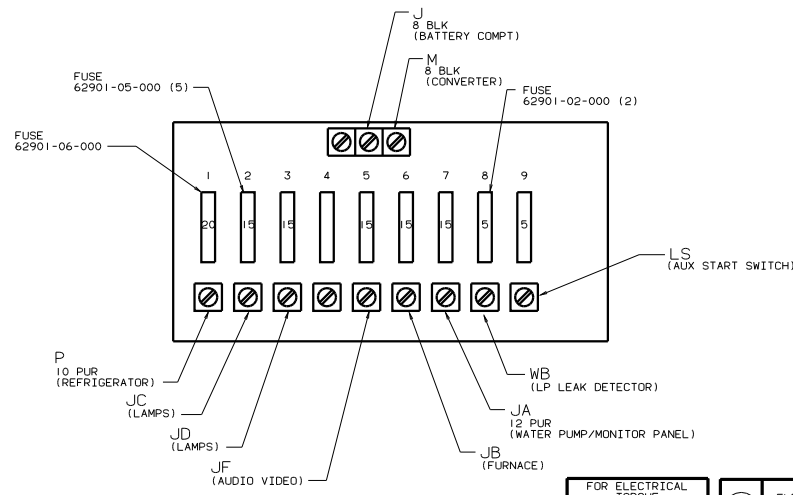
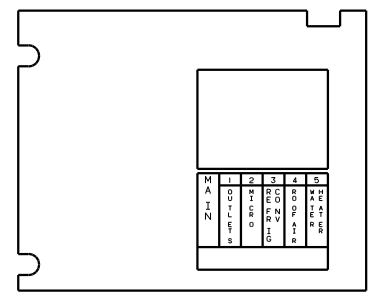
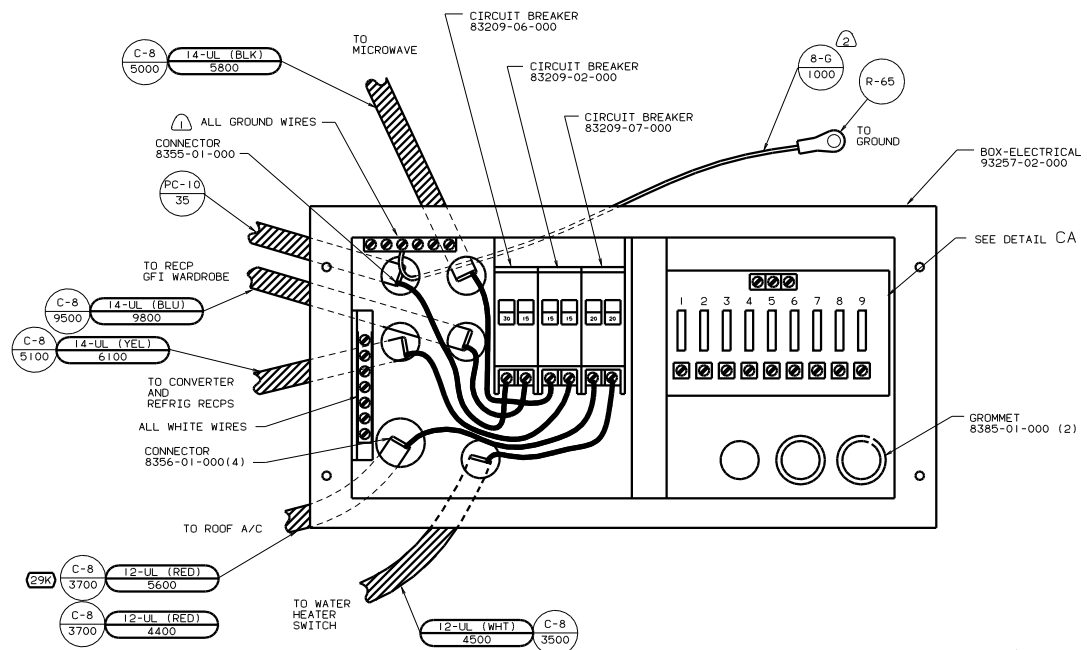
- △ ROUTE WIRE THRU SIDEWALL.
- ALL GROUND WIRES TO BE COVERED WITH TUBING 8041-02-000.
 - ALL WIRES ARE TO BE CLAMPED WITH CLAMP 10497-05-000 WITHIN 200 OF OUTLET BOXES. USE SCREW G67-10-12B.
 - ALL WIRES TO BE CLAMPED WITH CLAMP 10495-01-000 OR CLIP 80734-01-000 EVERY 600. USE SCREW G67-10-12B UNLESS OTHERWISE SPECIFIED.

- 39A EXT RECEPTACLE DPLX 120VAC
- 1B1 CODES STANDARDS/USA
- 12D ELECTRICAL SYSTEM 30 AMP

FOR ELECTRICAL TORQUE SPECIFICATIONS SEE DWG NO. 121339-01-000	(X-X)	FOR ELECTRICAL CALLOUTS SEE DWG NO. 121339-01-000
--	-------	---

99 222HD 1B1 12D

TITLE: WIRING INSTL-BODY (110R30US)	
NO. OF SHEETS: 2	SHEET NO: 2 OF 10
DATE: 11/03/05	REV: 1
DWG NO: 131115	



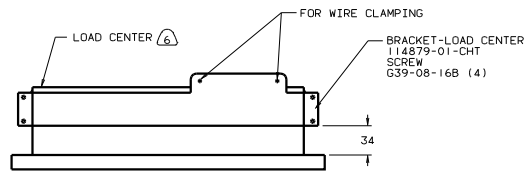
- ② SOLDER DIP STRIPED END OF 8GA WIRE.
- ⚠ ALL GROUND WIRES TO BE COVERED WITH TUBING 8041-02-000.

FOR ELECTRICAL TORQUE SPECIFICATIONS SEE DWG NO. 128783-01-000

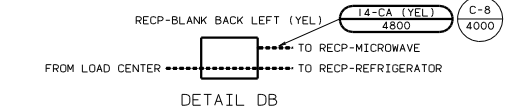
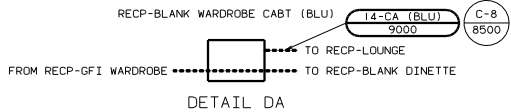
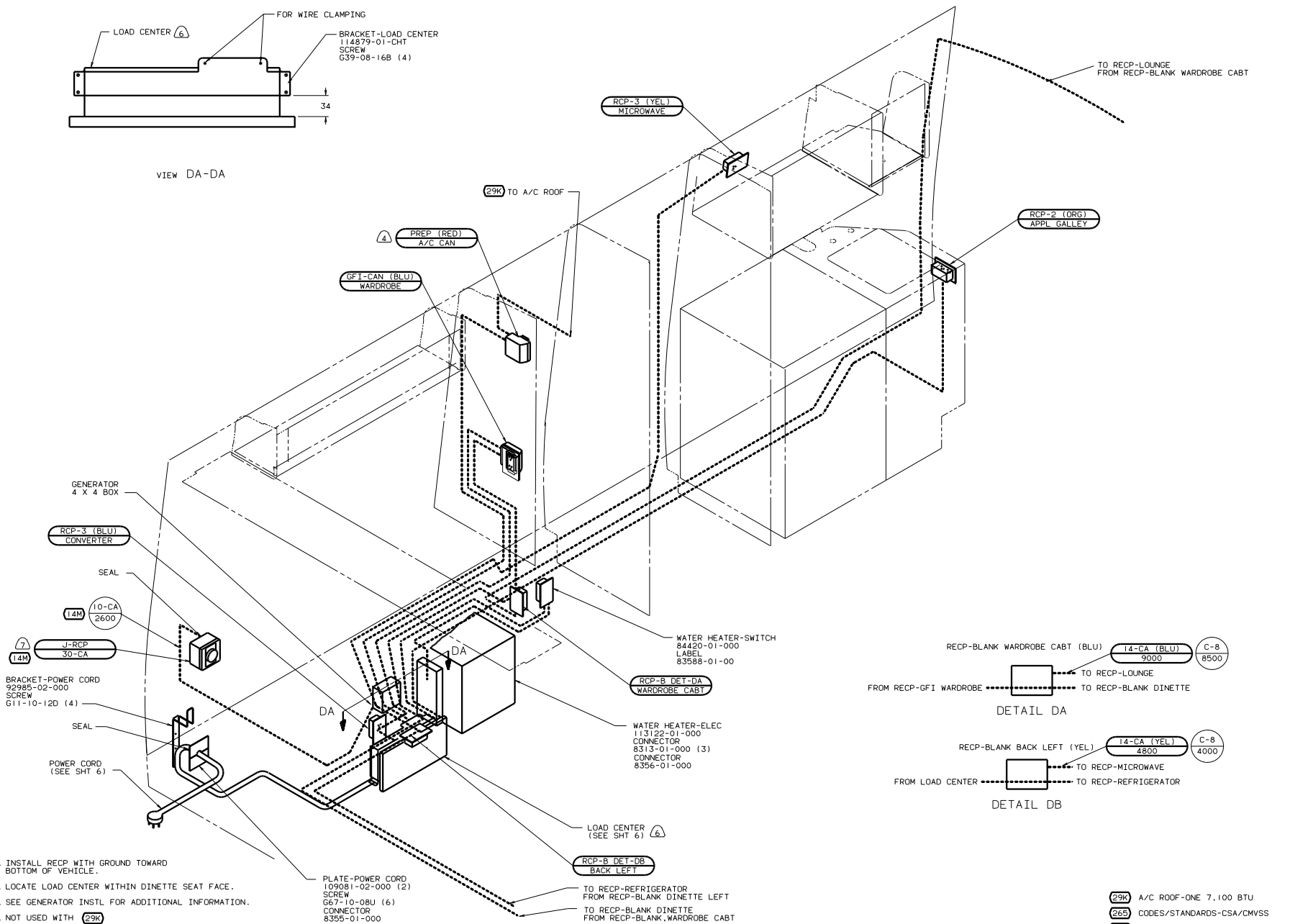
FOR ELECTRICAL CALLOUTS SEE DWG NO. 121339-01-000

②③ A/C ROOF-ONE 7.100 BTU
 ①② CODES STANDARDS/USA
 ①② ELECTRICAL SYSTEM 30 AMP
 99 222HD ①② ①②

FILE NO.	131115
REV	1
DATE	3/10/05
SHEET	3 OF 10



VIEW DA-DA



- 7) INSTALL RECP WITH GROUND TOWARD BOTTOM OF VEHICLE.
- 6) LOCATE LOAD CENTER WITHIN DINETTE SEAT FACE.
- 5) SEE GENERATOR INSTL FOR ADDITIONAL INFORMATION.
- 4) NOT USED WITH 29K
- 3. ALL GROUND WIRES TO BE COVERED WITH TUBING 8011-02-000.
- 2. ALL WIRES ARE TO BE CLAMPED WITH CLAMP 10497-05-000 WITHIN 200 OF OUTLET BOXES. USE SCREW 667-10-12B.
- 1. ALL WIRES TO BE CLAMPED WITH CLAMP 10495-01-000 OR CLIP 80734-01-000 EVERY 600. USE SCREW 667-10-12B UNLESS OTHERWISE SPECIFIED.

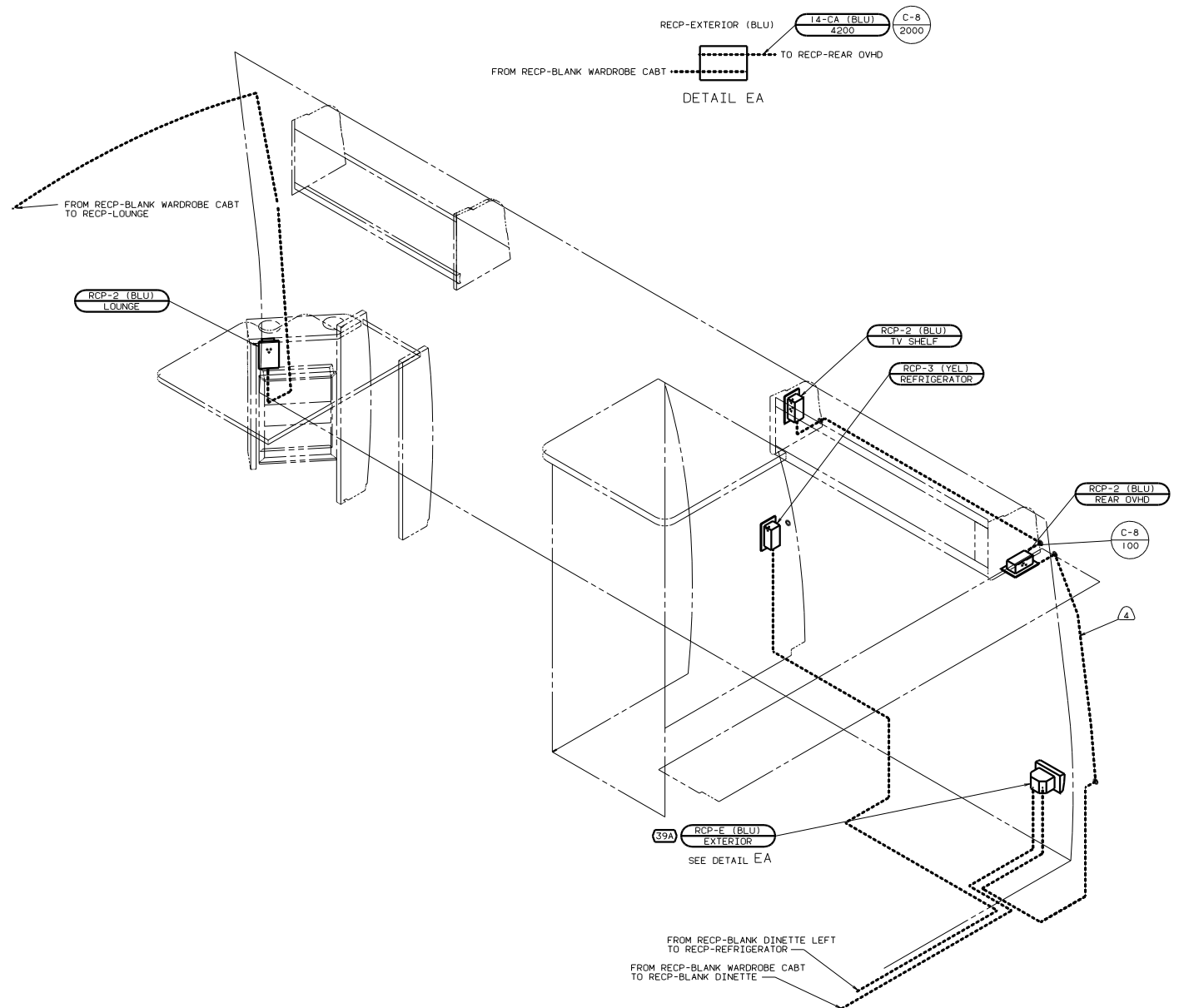
- 29K A/C ROOF-ONE 7.100 BTU
- 265 CODES/STANDARDS-CSA/CMVSS
- 14M GENERATOR-3.000W-GENERAC GAS
- 12D ELECTRICAL SYSTEM 30 AMP

FOR ELECTRICAL TORQUE SPECIFICATIONS SEE DWG NO. 128783-01-000

FOR ELECTRICAL CALLOUTS SEE DWG NO. 121339-01-000

99 222HD 265 12D

FILE	WIRING INSTL-BODY(110130CAN)
NO. OF SHEETS	16
SHEET	4 OF 10
REV	1
DATE	131115



- 4) ROUTE WIRE THRU SIDEWALL.
- ALL GROUND WIRES TO BE COVERED WITH TUBING 8011-02-000.
 - ALL WIRES ARE TO BE CLAMPED WITH CLAMP 10497-05-000 WITHIN 200 OF OUTLET BOXES. USE SCREW G67-10-12B.
 - ALL WIRES TO BE CLAMPED WITH CLAMP 10495-01-000 OR CLIP 80734-01-000 EVERY 600. USE SCREW G67-10-12B UNLESS OTHERWISE SPECIFIED.

NOTES:

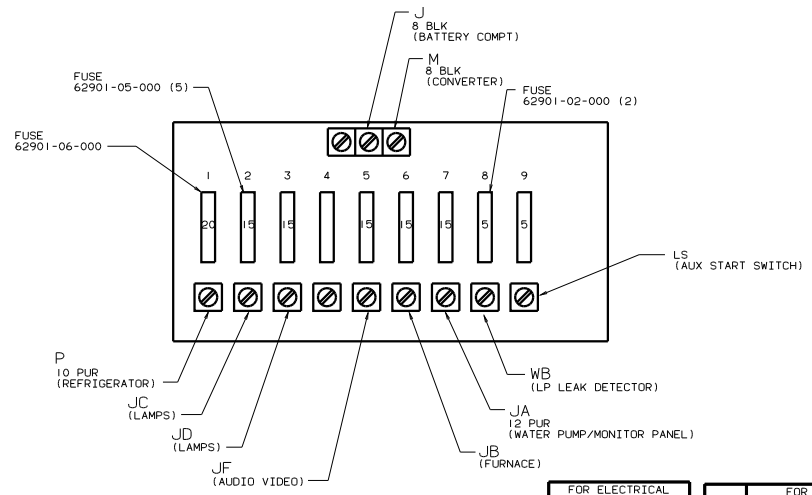
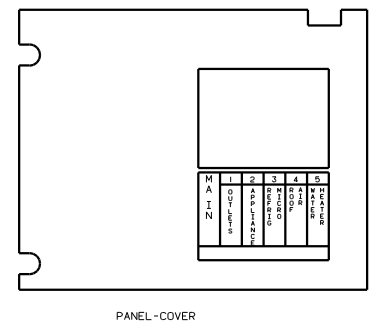
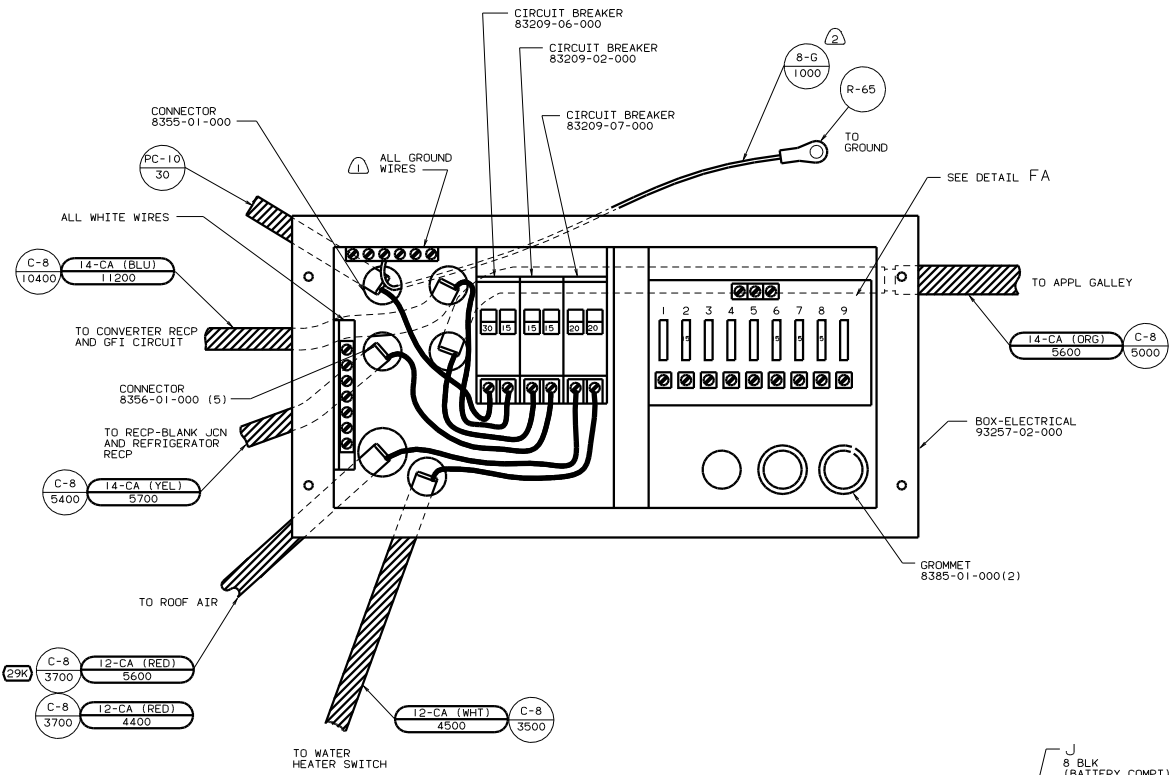
FOR ELECTRICAL TORQUE SPECIFICATIONS SEE DWG NO. 128783-01-000

FOR ELECTRICAL CALLOUTS SEE DWG NO. 121339-01-000

- 39A EXT RECEPTACLE DPLX 120VAC
- 265 CODES/STANDARDS-GSA/CMVSS
- 120 ELECTRICAL SYSTEM 30 AMP

99 222HD 265 120

WIRING INSTL-BODY (L10R30CAN)
 SHEET 5 OF 10



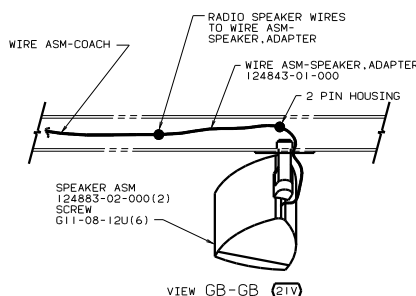
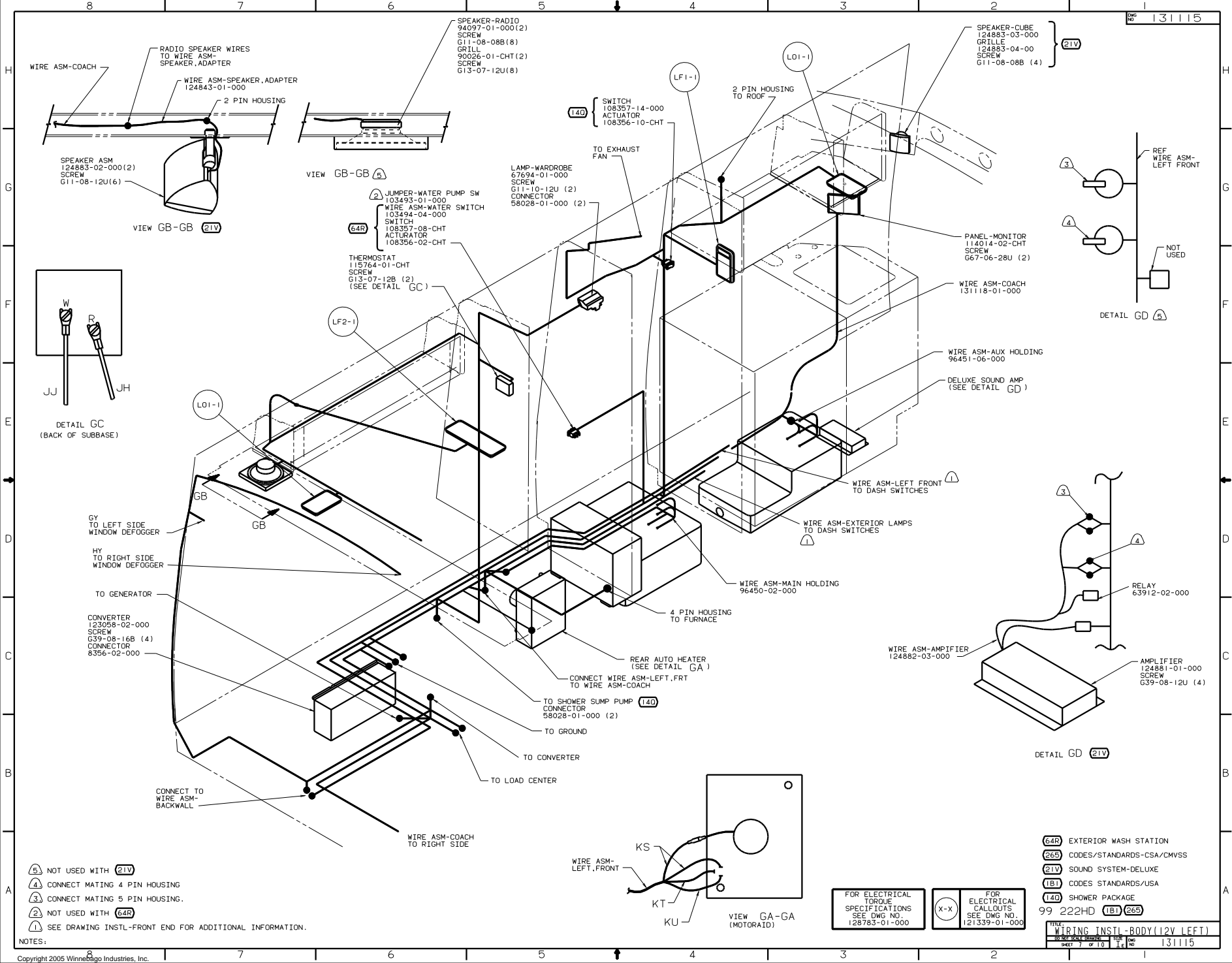
- 2 SOLDER DIP STRIPED END OF 8GA WIRE.
 1 ALL GROUND WIRES TO BE COVERED WITH TUBING 8041-02-000.

- 29K A/C ROOF-ONE 7.100 BTU
 265 CODES/STANDARDS-CSA/CMVSS
 120 ELECTRICAL SYSTEM 30 AMP
 99 222HD 265 120

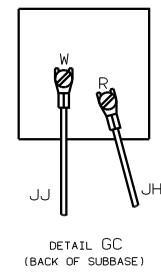
FOR ELECTRICAL TORQUE SPECIFICATIONS SEE DWG NO. 128783-01-000

FOR ELECTRICAL CALLOUTS SEE DWG NO. 121339-01-000

FILE: WIRING INSTL-BODY(30 CC CAN)
 SHEET 6 OF 10
 131115



VIEW GB-GB (5)



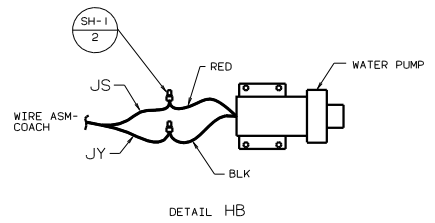
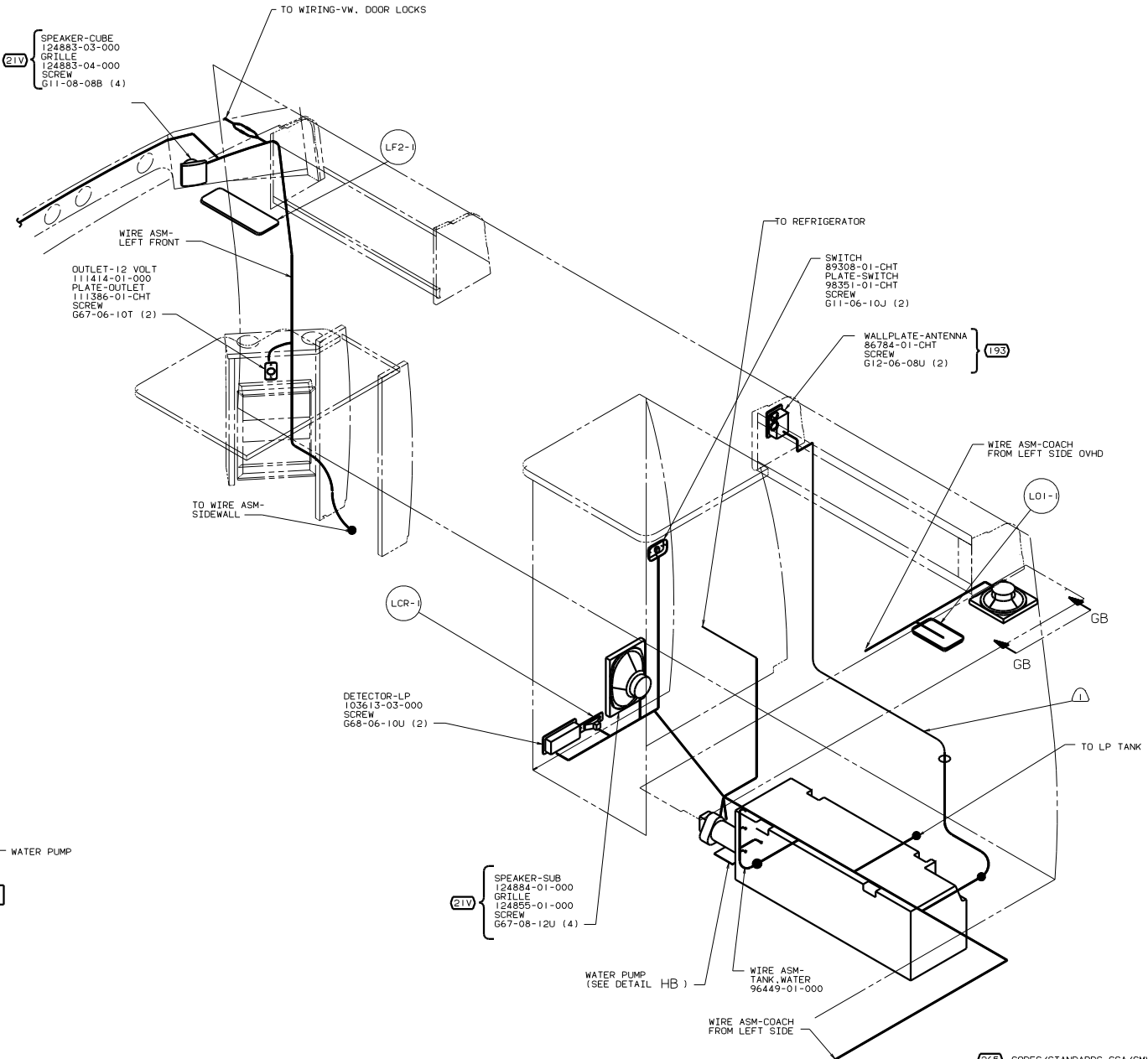
- NOTES:
- (5) NOT USED WITH (21V)
 - (4) CONNECT MATING 4 PIN HOUSING
 - (3) CONNECT MATING 5 PIN HOUSING.
 - (2) NOT USED WITH (64R)
 - (1) SEE DRAWING INSTL-FRONT END FOR ADDITIONAL INFORMATION.

- (64R) EXTERIOR WASH STATION
- (26S) CODES/STANDARDS-CSA/CMVSS
- (21V) SOUND SYSTEM-DELUXE
- (1B1) CODES STANDARDS/USA
- (14D) SHOWER PACKAGE

FOR ELECTRICAL TORQUE SPECIFICATIONS SEE DWG NO. 128783-01-000

FOR ELECTRICAL CALLOUTS SEE DWG NO. 121339-01-000

FILE	WIRING INSTL - BODY (L2V LEFT)
NO. OF SHEETS	11
SHEET	7 OF 10
DATE	131115



1 WIRE ROUTED IN SIDEWALL.

NOTES:

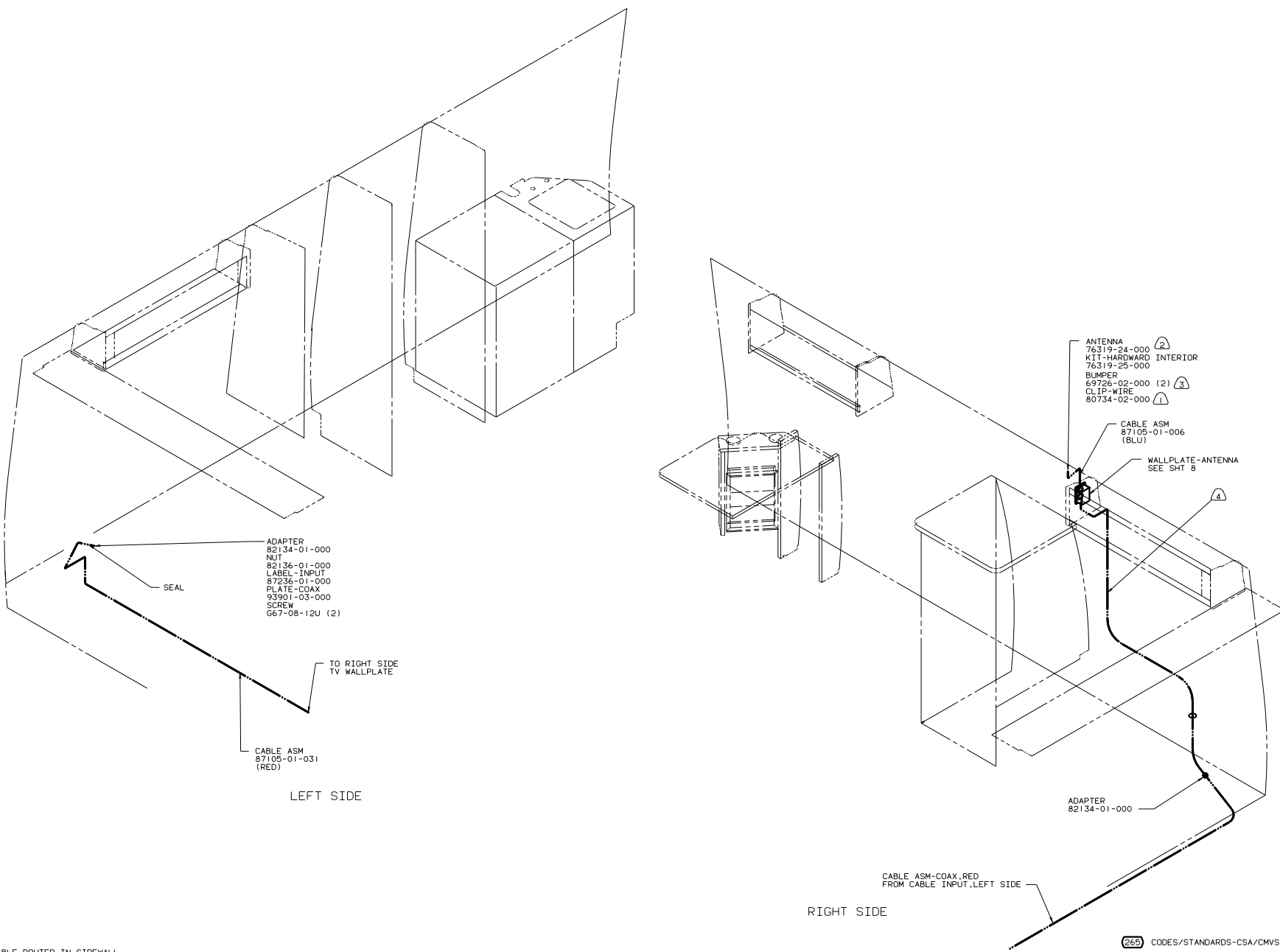
FOR ELECTRICAL TORQUE SPECIFICATIONS SEE DWG NO. 128783-01-000

(X-X) FOR ELECTRICAL CALLOUTS SEE DWG NO. 121339-01-000

- (265) CODES/STANDARDS-CSA/CMVSS
- (21V) SOUND SYSTEM-DELUXE
- (1B1) CODES STANDARDS/USA
- (193) TV ANTENNA

99 222HD (1B1) (265)

TITLE	WIRING INSTL-BODY(12_R)
NO. OF SHEETS	8 OF 10
DWG NO.	131115



ADAPTER
82134-01-000
NJ1
82136-01-000
LABEL-INPUT
87236-01-000
PLATE-COAX
93901-03-000
SCREW
667-08-12U (2)

SEAL

TO RIGHT SIDE
TV WALLPLATE

CABLE ASM
87105-01-031
(RED)

LEFT SIDE

ANTENNA
76319-24-000 (2)
KIT-HARDWARE INTERIOR
76319-25-000
BUMPER
69726-02-000 (2) (3)
CLIP-WIRE
80734-02-000 (1)

CABLE ASM
87105-01-006
(BLU)

WALLPLATE-ANTENNA
SEE SHT 8

ADAPTER
82134-01-000

CABLE ASM-COAX, RED
FROM CABLE INPUT, LEFT SIDE

RIGHT SIDE

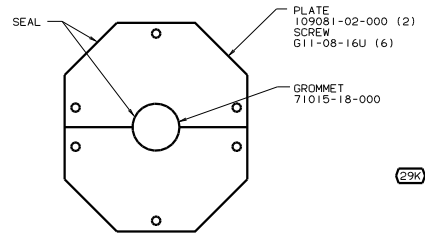
- NOTES:
- (4) CABLE ROUTED IN SIDEWALL.
 - (3) ADD RUBBER BUMPER TO ROOF UNDER EACH END OF ANTENNA IN DOWN POSITION WHICH MAY COME IN CONTACT WITH ROOF.
 - (2) SEE DRAWING 76319-01-000 FOR ADDITIONAL INFORMATION.
 - (1) LOCATE TO RETAIN CABLE BUT NOT RESTRICT TRAVEL OF ANTENNA.

FOR ELECTRICAL
TORQUE
SPECIFICATIONS
SEE DWG NO.
128763-01-000

(265) CODES/STANDARDS-CSA/CMVSS
(1B1) CODES STANDARDS/USA
(193) TV ANTENNA

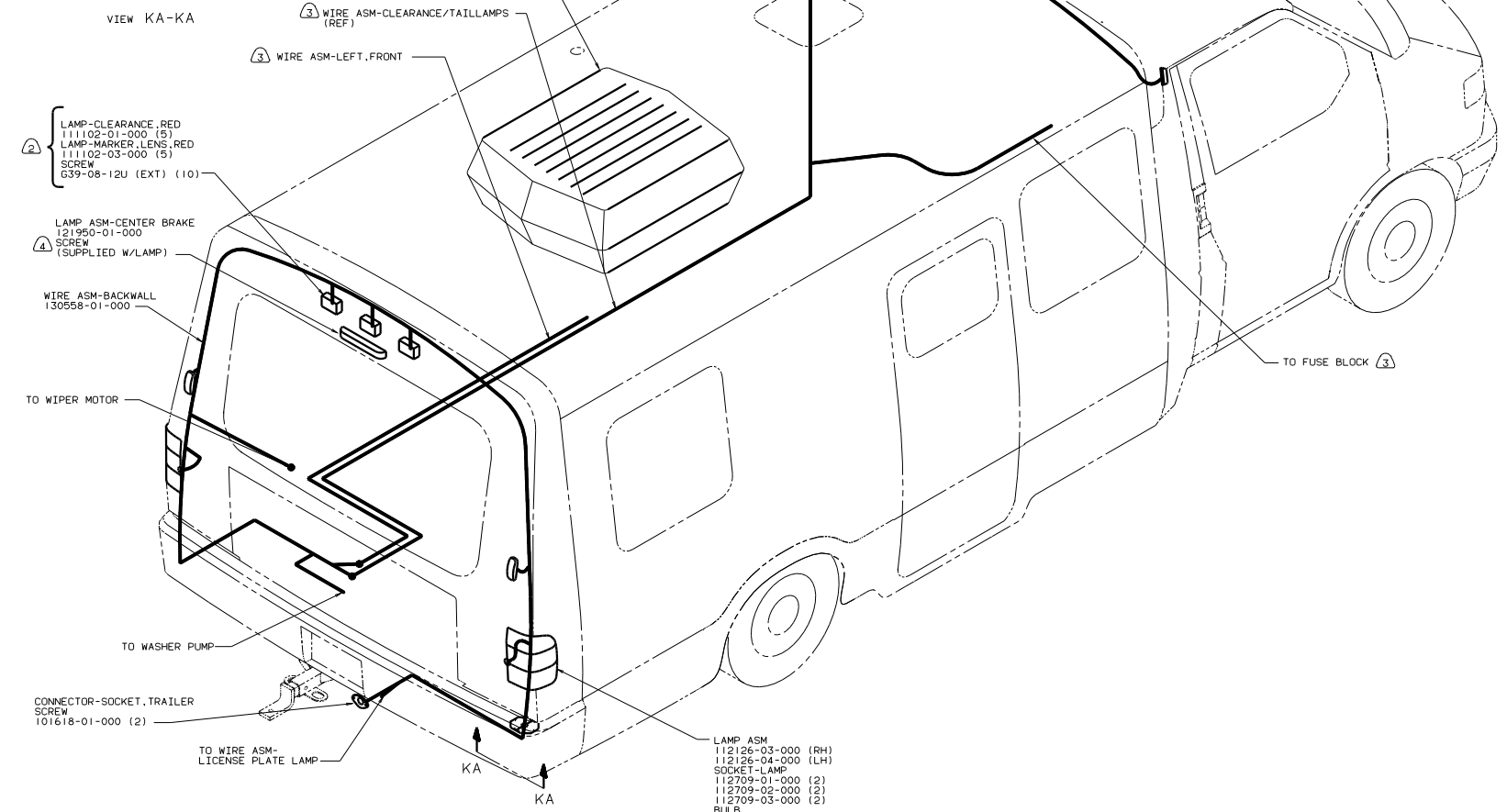
99 222HD (1B1) (265) (193)

TITLE: WIRING INSTL-BODY(COAX)
SHEET 9 OF 10



- (29K) AIR CONDITIONER 93306-01-DHT
- CEILING ASM 93307-03-000
- SPRING A/C 102289-01-000 (4)

- LAMP-CLEARANCE AMBER 113709-01-000 (5)
- SCREW 611-08-12T (10)



- LAMP ASM 112126-03-000 (RH)
- 112126-04-000 (LH)
- SOCKET-LAMP 112709-01-000 (2)
- 112709-02-000 (2)
- 112709-03-000 (2)
- BULB 112707-01-000 (4)
- 112708-01-000 (2)
- BRACKET ASM-TAIL LAMP 113778-03-000 (2)
- SCREW 639-10-209 (4)
- GROMMET 23942-01-000 (2)

- (4) ON INTERIOR OF CAP, GRIND OFF TIP OF SCREW PRIOR TO SEALING (TO PROVIDE INNER LINER CLEARANCE).
 - (3) SEE WIRING INSTL-FRONT END FOR ADDITIONAL INFORMATION.
 - (2) LOCATE ON CENTER OF HOLE IN CAP ASM-REAR.
1. CONNECTOR-PLUG, TRAILER 113589-01-000 TO BE SUPPLIED LOOSE IN COACH WITH TRAILER TOW PACKAGE.

- (29K) A/C ROOF-ONE 7,100 BTU
- (265) CODES/STANDARDS-CSA/CMVSS
- (1B1) CODES STANDARDS/USA

FOR ELECTRICAL TORQUE SPECIFICATIONS SEE DWG NO. 128783-01-000

99 222HD (1B1) (265)

TITLE	WIRING INSTL-BODY(EX L)
NO. OF SHEETS	10
SHEET NO.	10 OF 10
DWG NO.	131115