



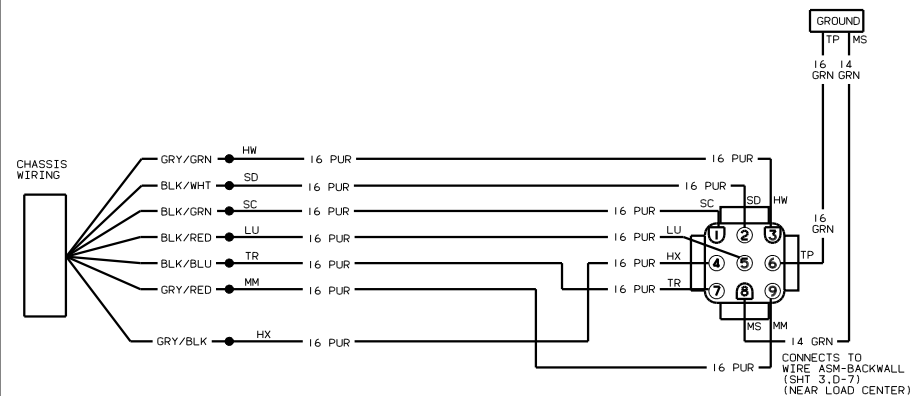
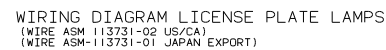
DANGER

Danger of electrical shock, burns or death. Always remove all power sources before attempting any repair, service or diagnostic work. Power can be present from shore power, generator, inverter or battery. All power sources must be disabled and secured before performing any service.

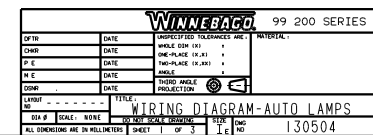


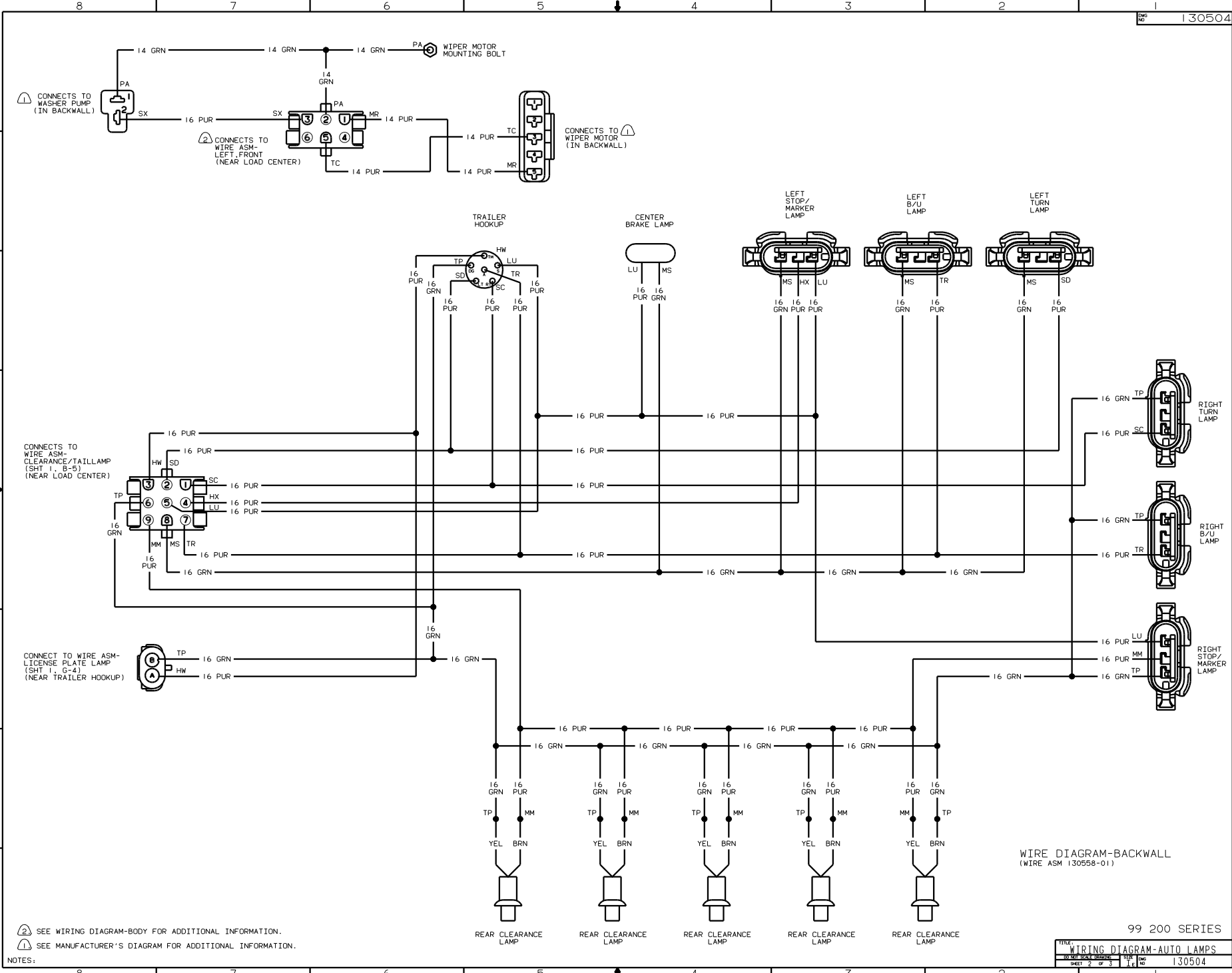
CAUTION

If you lack the skills, tools or equipment to perform diagnostic or repair work leave such work to an authorized Winnebago Industries dealer or other qualified shop.



WIRING DIAGRAM-CLEARANCE/TAILLAMPS
(WIRE ASM 131083-04)
(JAPAN EXPORT)





2 SEE WIRING DIAGRAM-BODY FOR ADDITIONAL INFORMATION.
1 SEE MANUFACTURER'S DIAGRAM FOR ADDITIONAL INFORMATION.

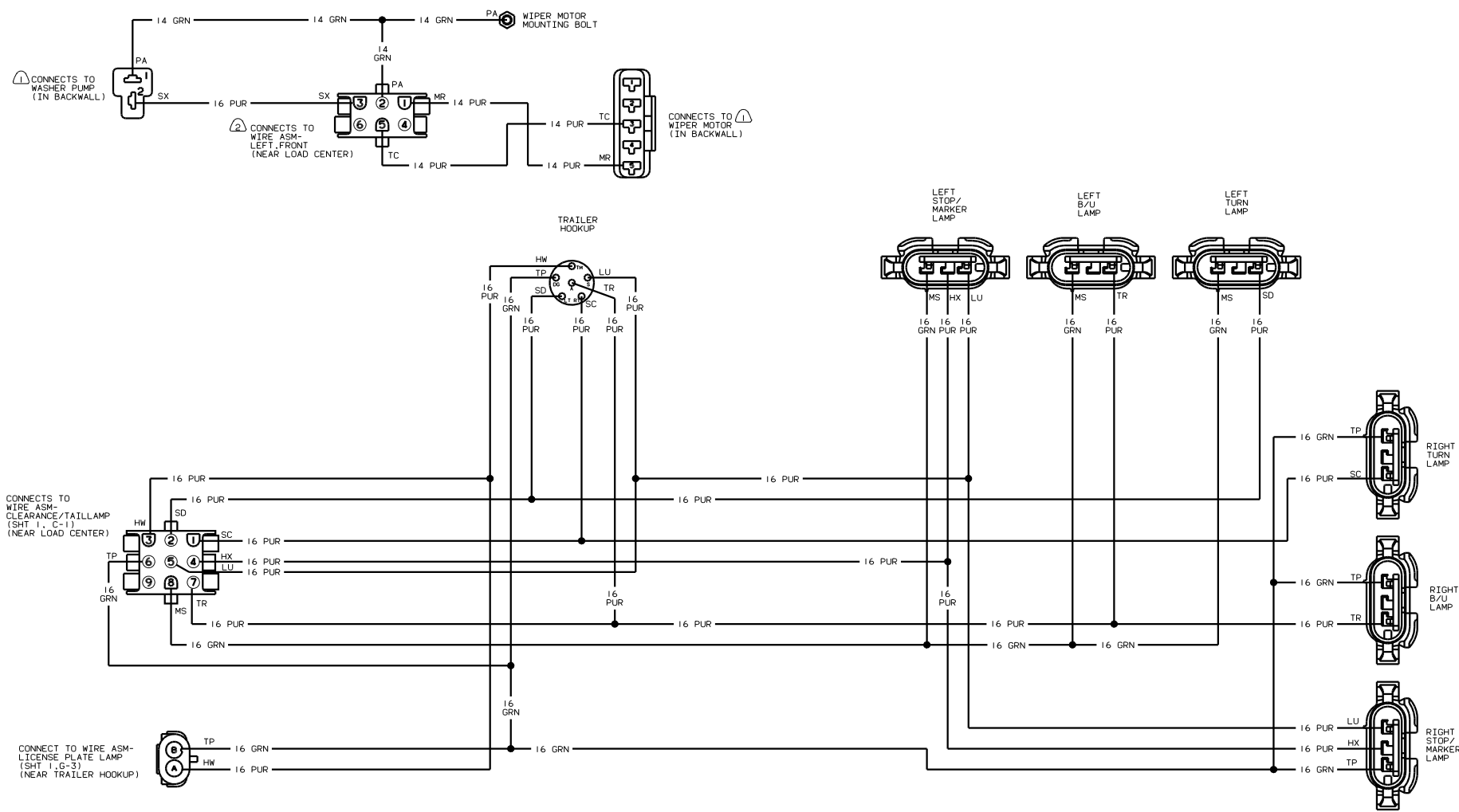
NOTES:

WIRE DIAGRAM-BACKWALL
(WIRE ASM 130558-01)

99 200 SERIES

WIRING DIAGRAM-AUTO LAMPS			
DATE	REV	BY	CHK
10/10/05	1	1	1
SHEET	2	OF 3	1

130504



NOTES:
 ② SEE WIRING DIAGRAM-BODY FOR ADDITIONAL INFORMATION.
 ① SEE MANUFACTURER'S DIAGRAM FOR ADDITIONAL INFORMATION.

WIRE DIAGRAM-BACKWALL
 (WIRE ASM 130558-02)
 (JAPAN EXPORT)

99 200 SERIES

WIRING DIAGRAM-AUTO LAMPS			
NO. OF PAGES	3	OF	3
REV.	1.0	DATE	130504